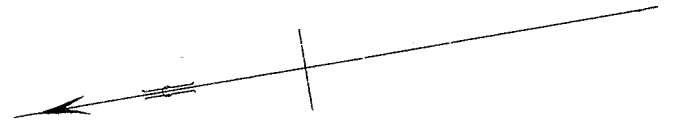


VICTORIAN RAILWAYS, SCARSDALE AND LINTONS LINE

Plan of Land

(1) x
Reference Number



Belonging to Occupied by
Situating in the Parish of Scarsdale in the County of Grenville

Scale 10 Chains to 1 Inch.

Quantity of Land required and colored red ^{A. R. R.} more or less. _{655 '91}



VICTORIAN RAILWAYS, SCARSDALE AND LINTONS LINE

1^{A X}

Reference Number

Plan of Land

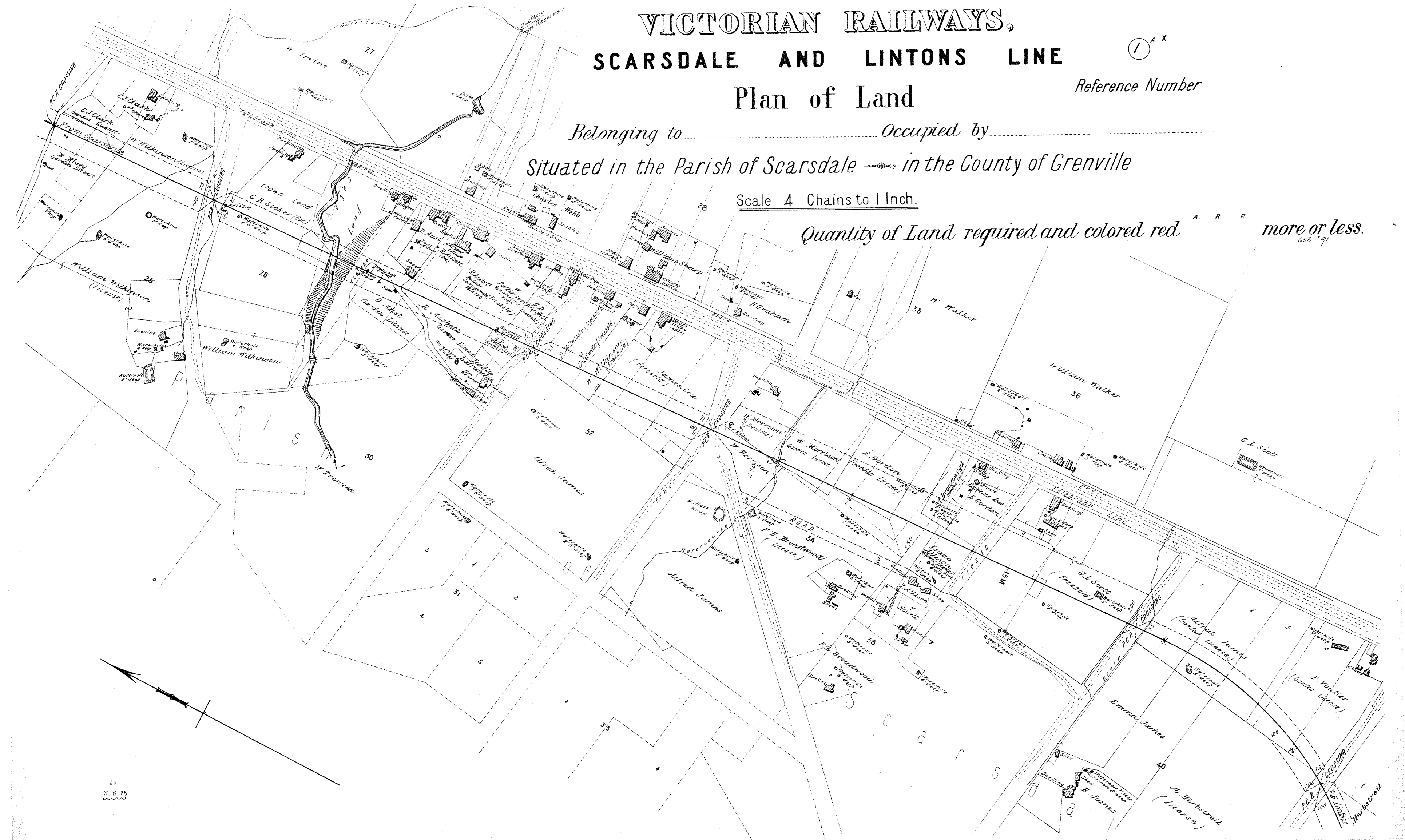
Belonging to Occupied by

Situated in the Parish of Scarsdale in the County of Grenville

Scale 4 Chains to 1 Inch.

Quantity of Land required and colored red

A. R. P. more or less.
656 191



VICTORIAN RAILWAYS, SCARSDALE AND LINTONS LINE

2^x

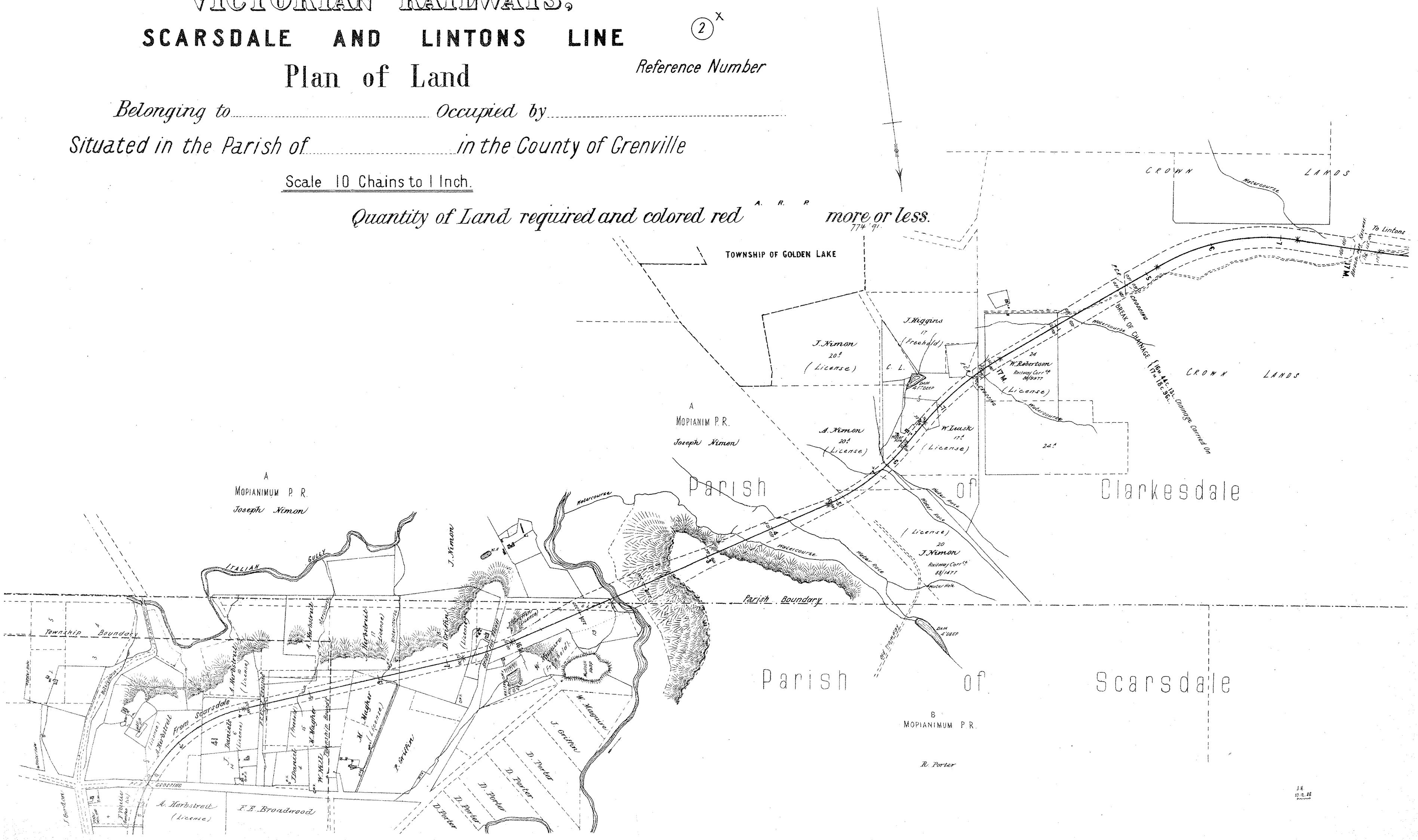
Reference Number

Plan of Land

Belonging to Occupied by
Situating in the Parish of in the County of Grenville

Scale 10 Chains to 1 Inch.

Quantity of Land required and colored red more or less.
774 91.



VICTORIAN RAILWAYS, SCARSDALE AND LINTONS LINE

③

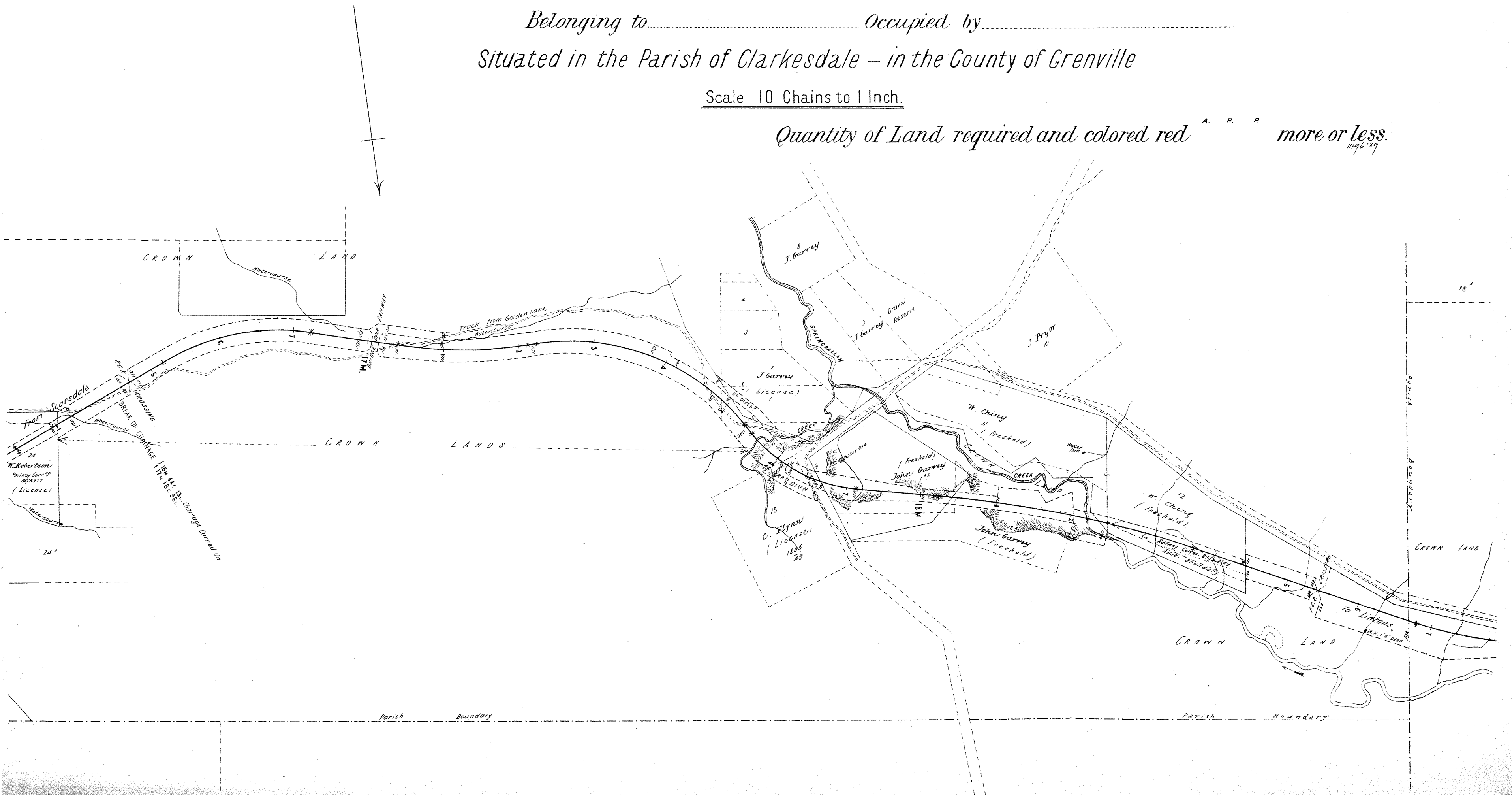
Plan of Land

Reference Number

Belonging to..... Occupied by.....
Situating in the Parish of *Clarksdale* - in the County of *Grenville*

Scale 10 Chains to 1 Inch.

Quantity of Land required and colored red ^{A. R. P.} more or less.
1196.89



VICTORIAN RAILWAYS, SCARSDALE AND LINTONS LINE

Plan of Land

(4)^{XX}
Reference Number

Belonging to Occupied by
Situating in the Parish of Argyle in the County of Grenville

Scale 10 Chains to 1 Inch.

Quantity of Land required and colored red more or less.

