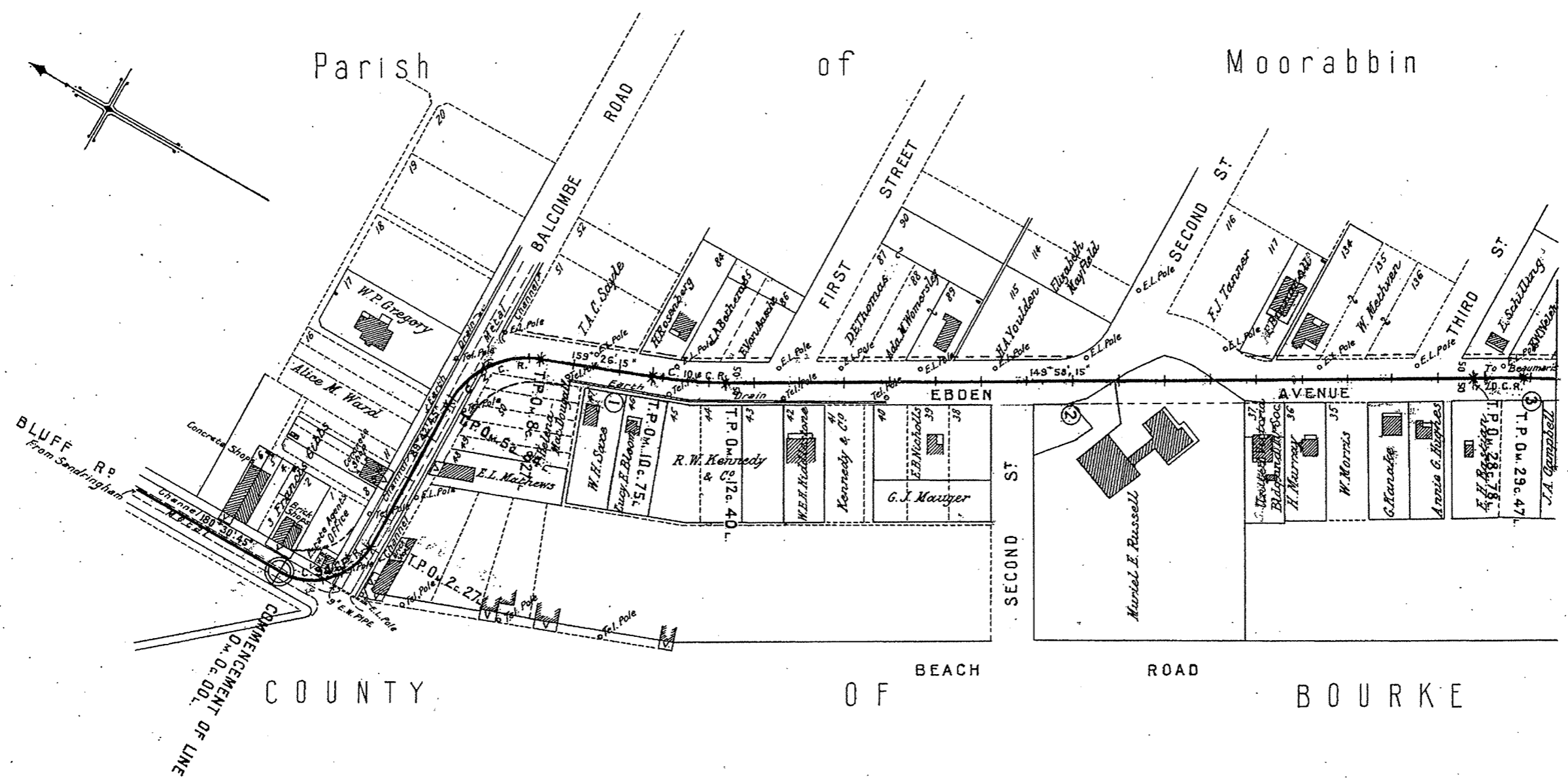


# V.R. BLACK ROCK TO BEAUMARIS ELECTRIC STREET RAILWAY

— SCALE — 2 Chains to an Inch

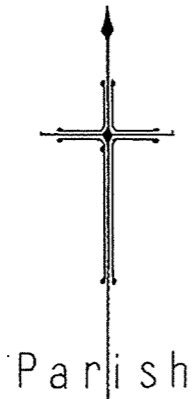
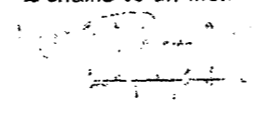
No 1

*Handwritten notes:*  
1111 feet  
27 feet



# V.R. BLACK ROCK TO BEAUMARIS ELECTRIC STREET RAILWAY

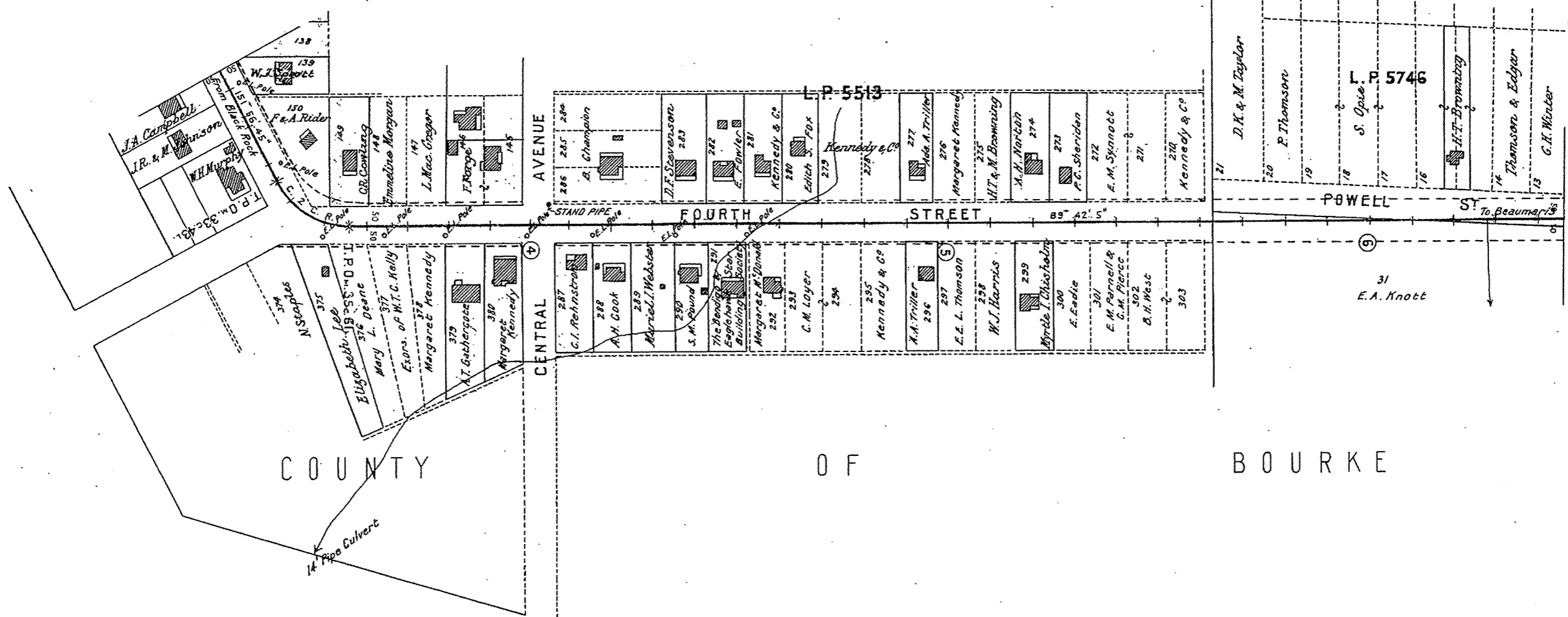
SCALE 2 Chains to an Inch



Parish

of

Moorabbin

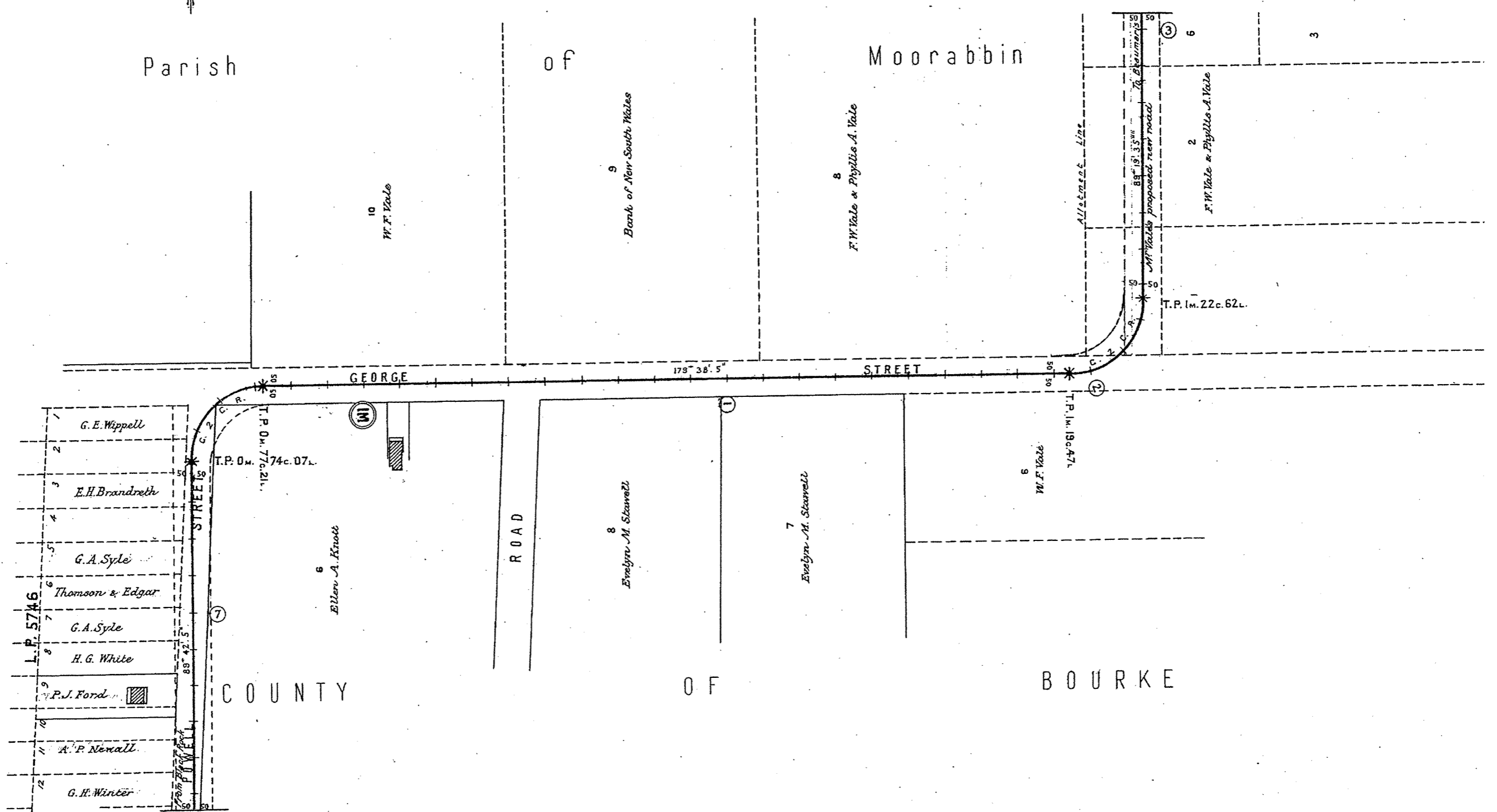
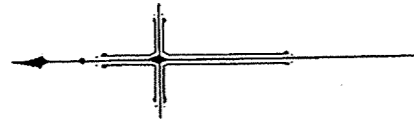


# V.R. BLACK ROCK TO BEAUMARIS ELECTRIC STREET RAILWAY

No 3

— SCALE — 2 Chains to an Inch

*W. F. Vale*  
22/11/21.

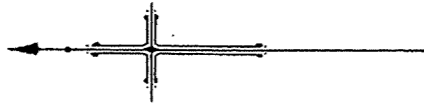


# V. R. BLACK ROCK TO BEAUMARIS ELECTRIC STREET RAILWAY

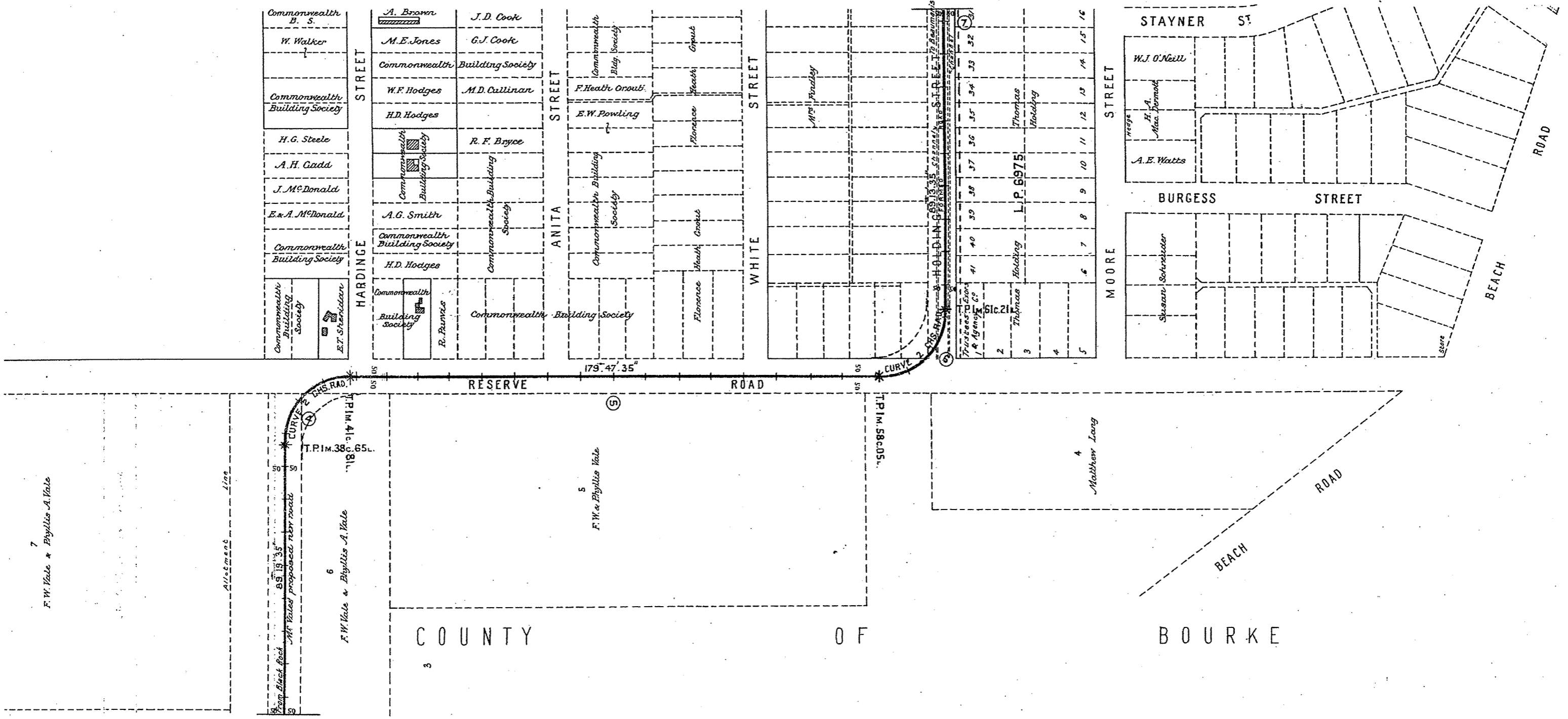
— SCALE — 2 Chains to an Inch

Nº 4

*W. R. ...*  
29/1/1911



Parish of Moorabbin



7 F.W. Vale & Phyllis A. Vale

Alignment Line

From Black Rock  
85° 19' 35"  
M.F. Vales proposed rby road  
T.P.M. 38.65 L.  
T.P.M. 41.18 L.  
T.P.M. 41.65 L.

6 F.W. Vale & Phyllis A. Vale

5 F.W. & Phyllis Vale

4 Matthew Long

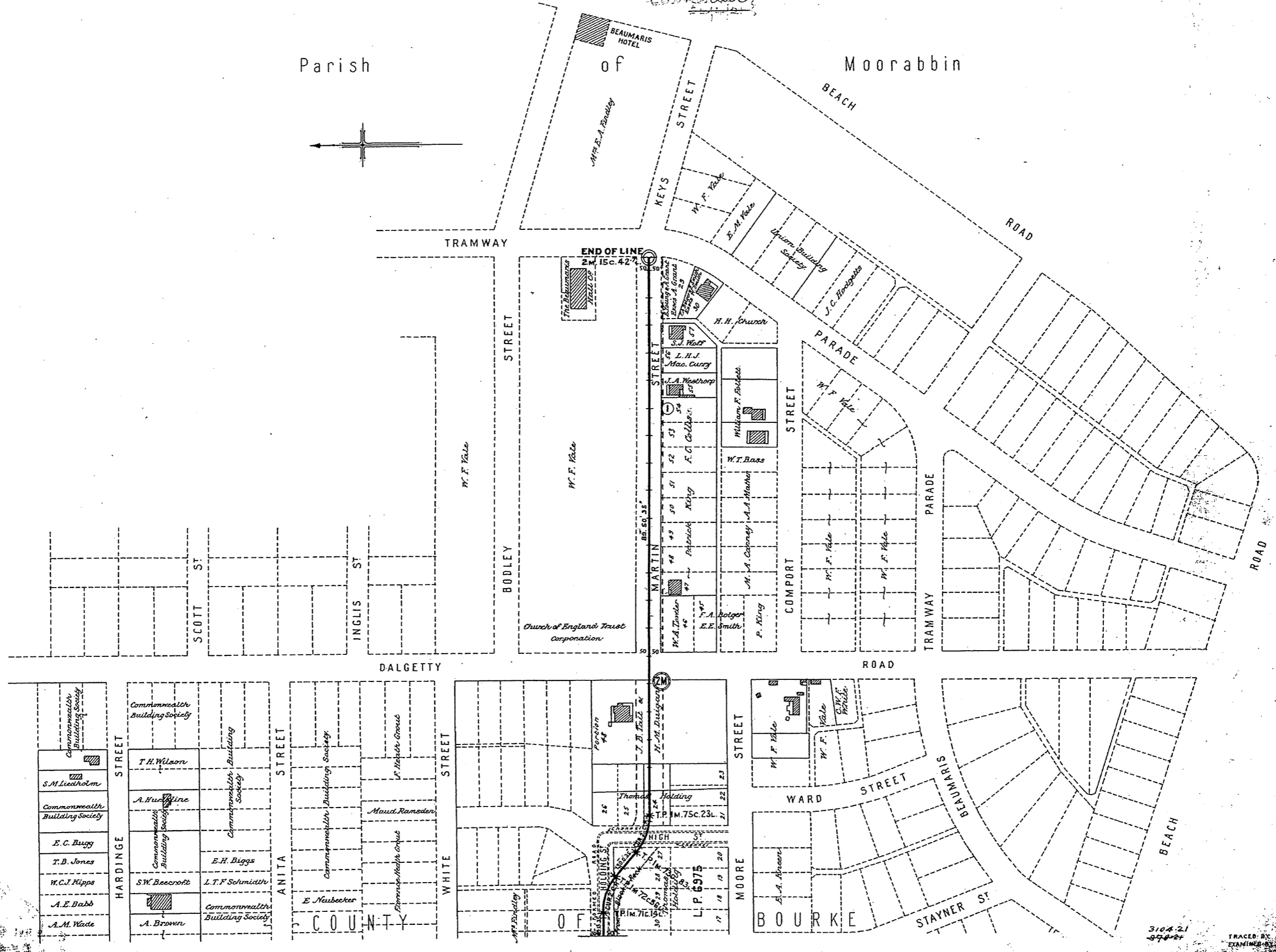
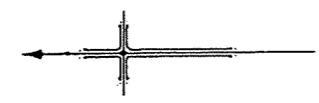
COUNTY OF BOURKE

# V.R. BLACK ROCK TO BEAUMARIS ELECTRIC STREET RAILWAY

1132  
No 5

—SCALE— 2 Chains to an Inch

Parish



3104-21  
EXAMINED BY...