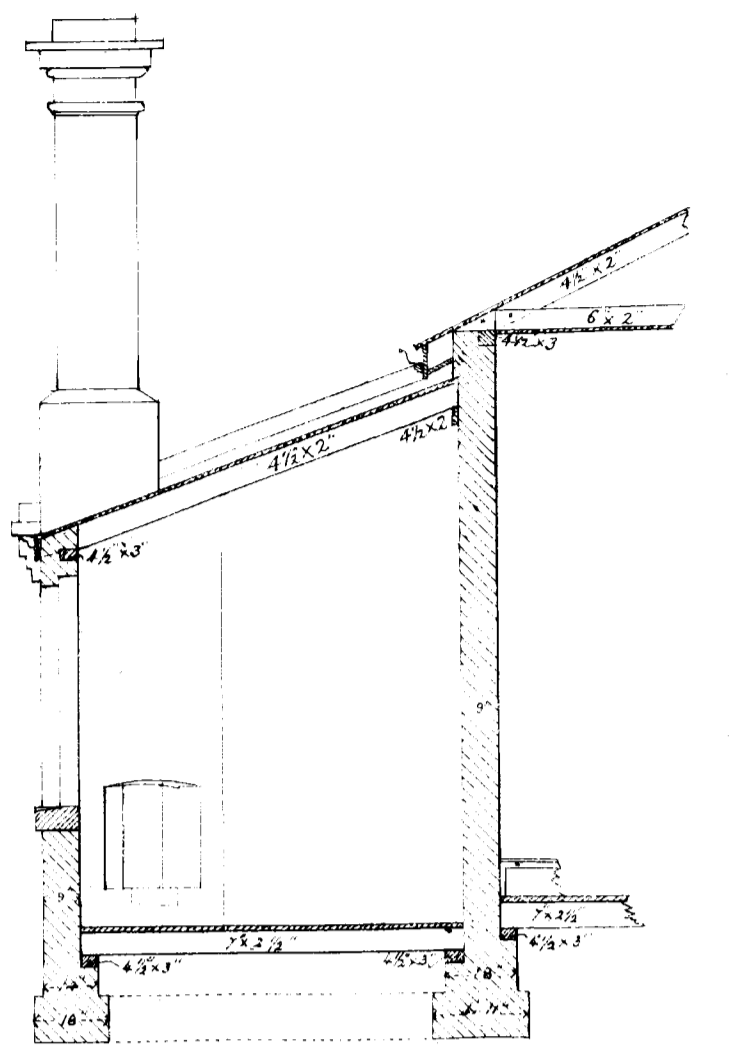
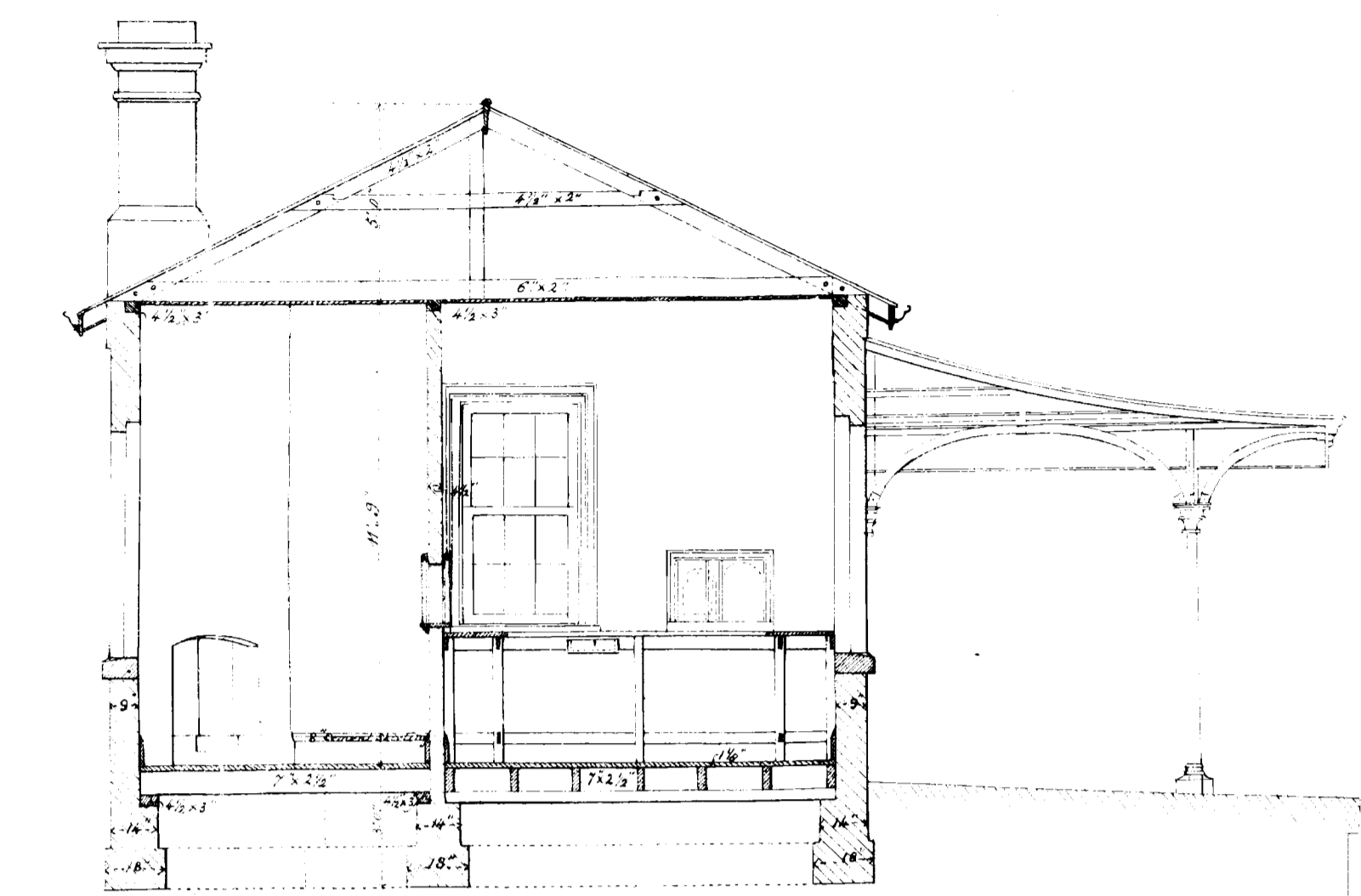
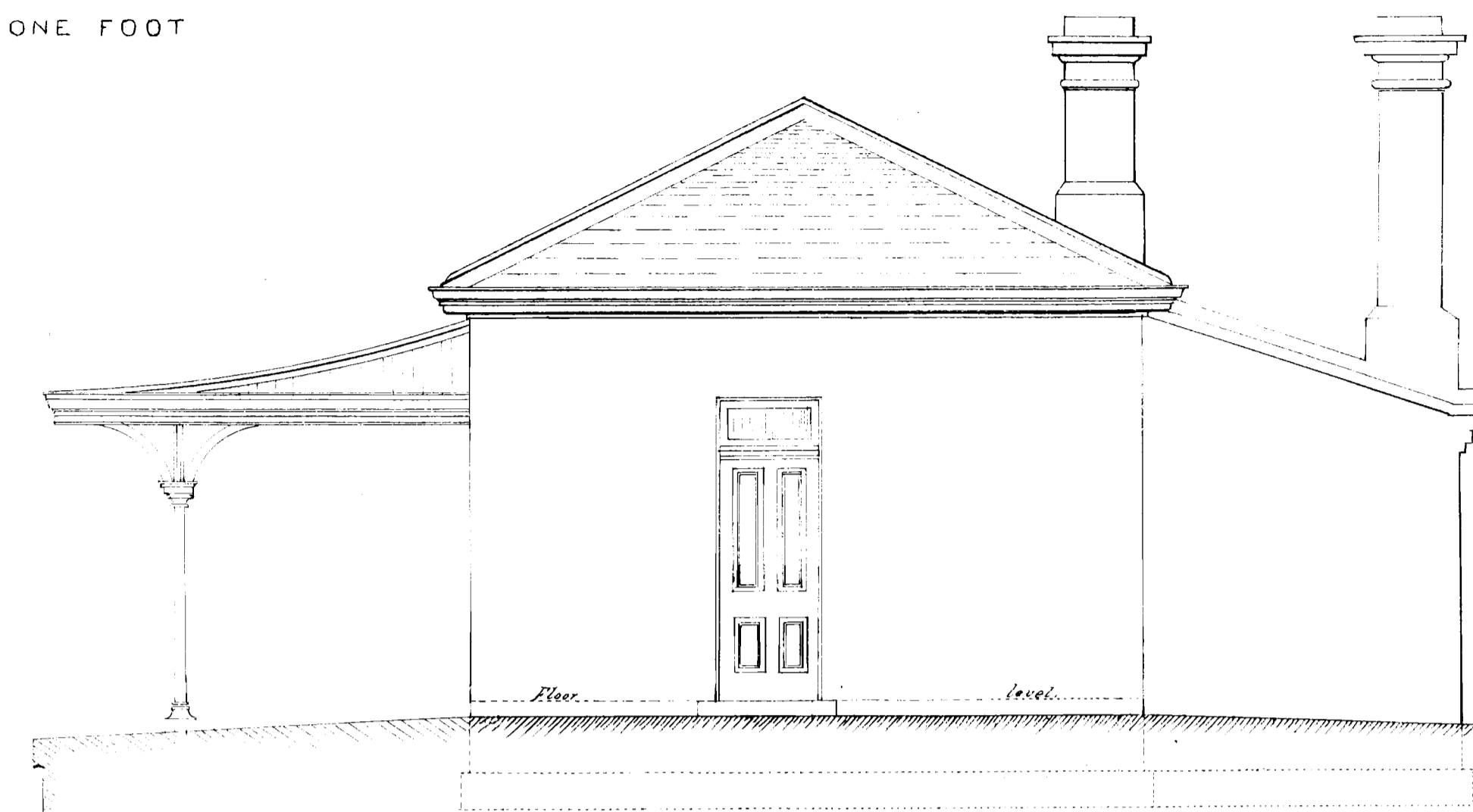
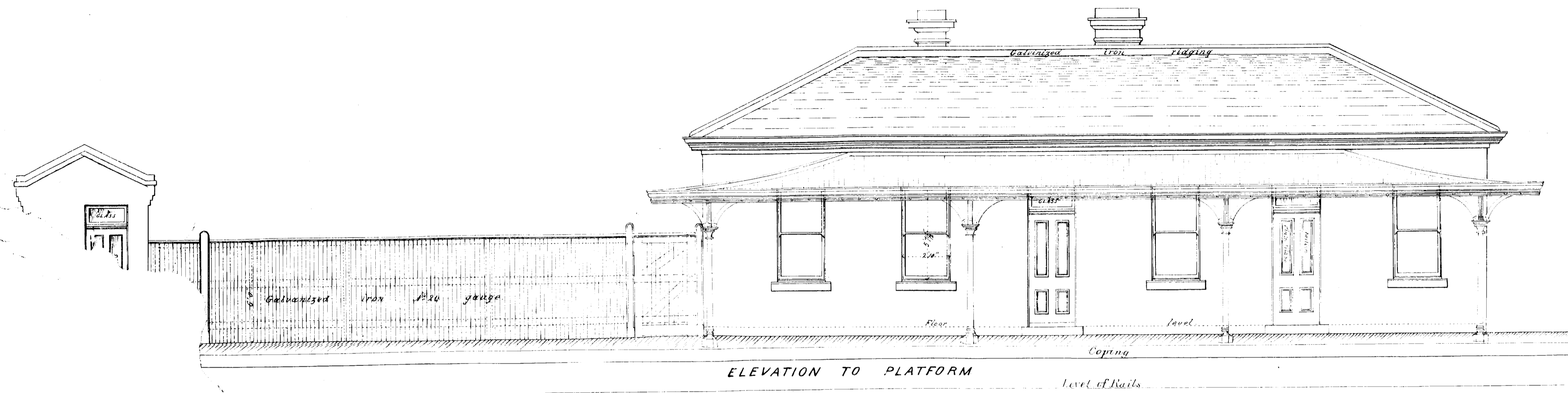


VICTORIAN RAILWAYS.

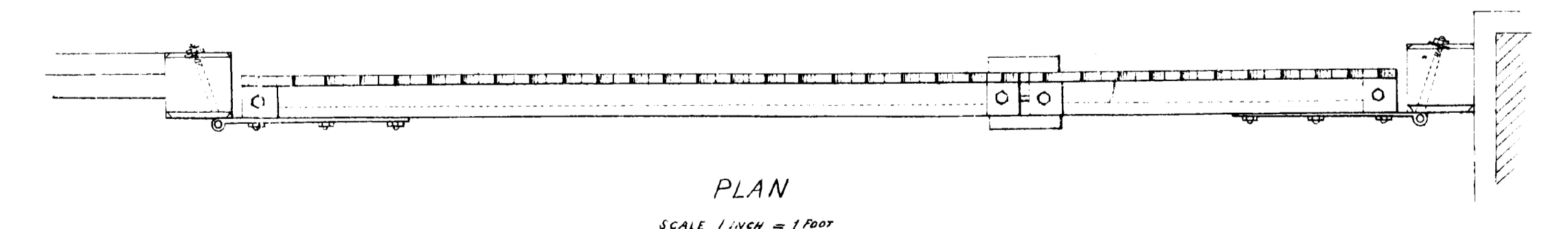
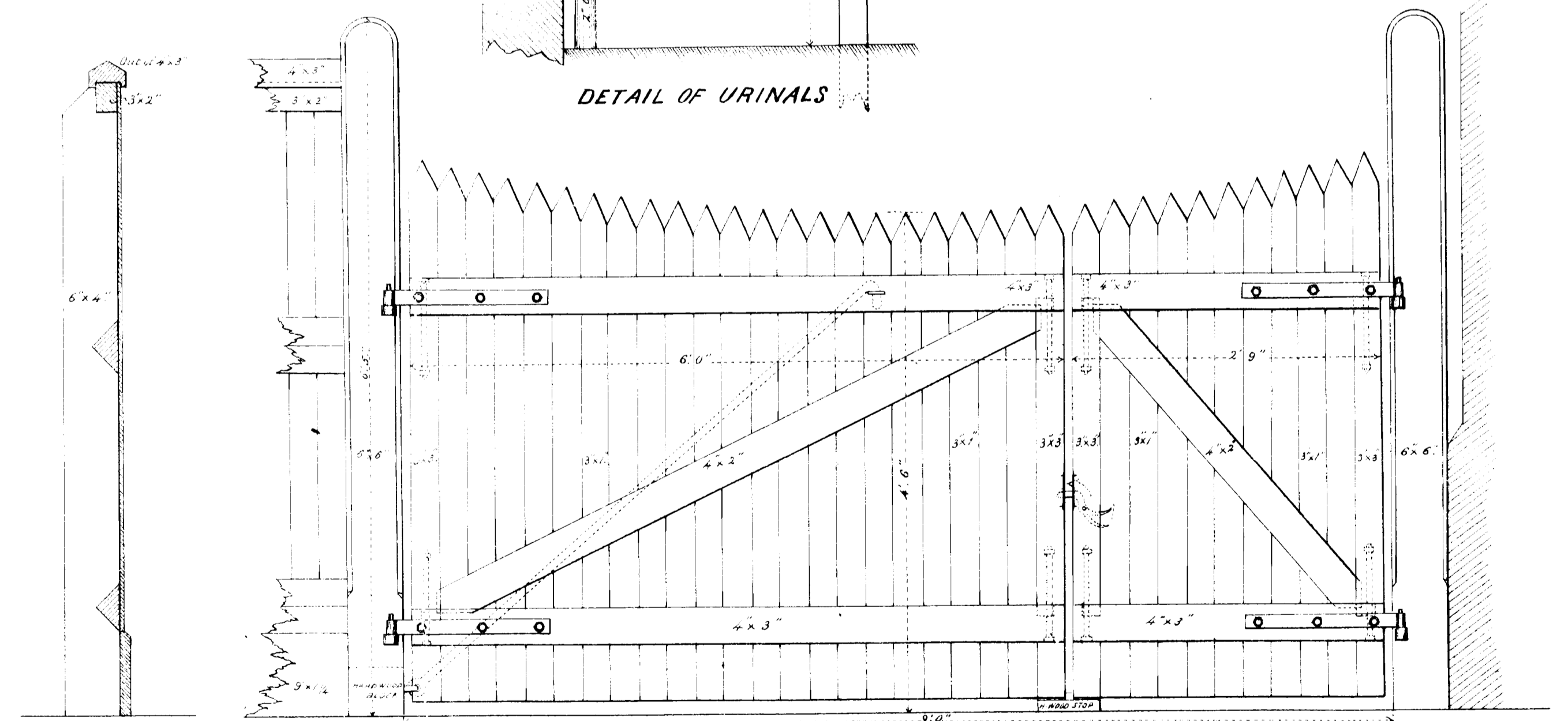
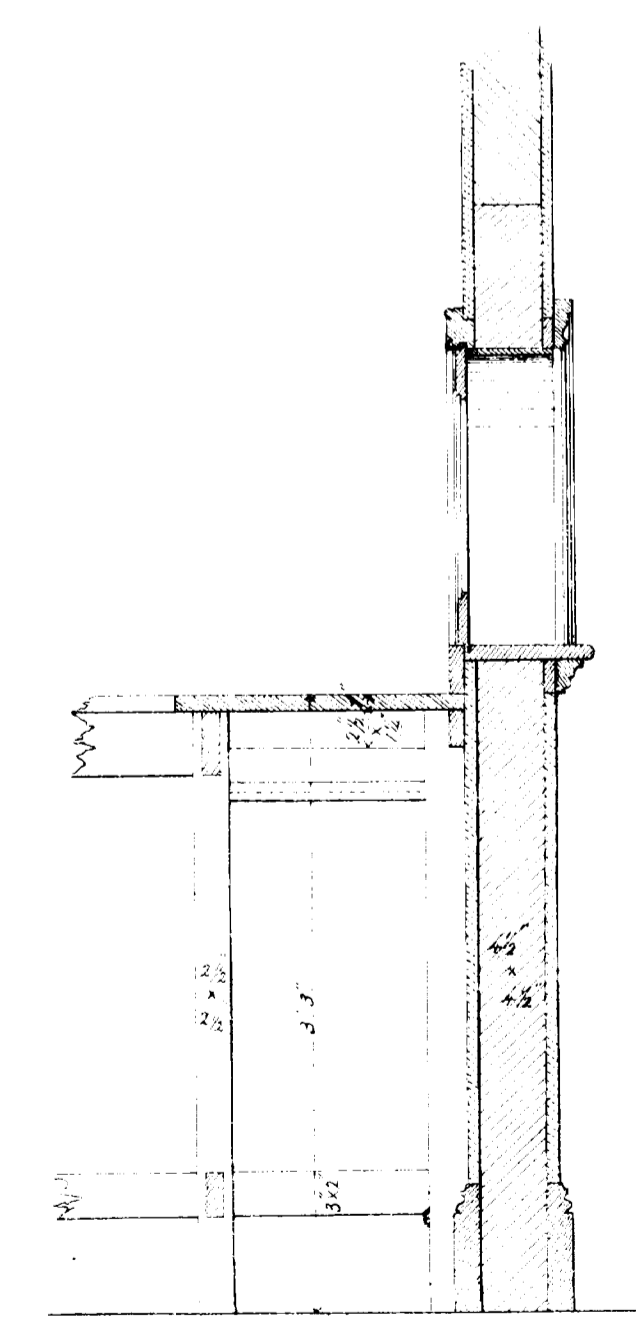
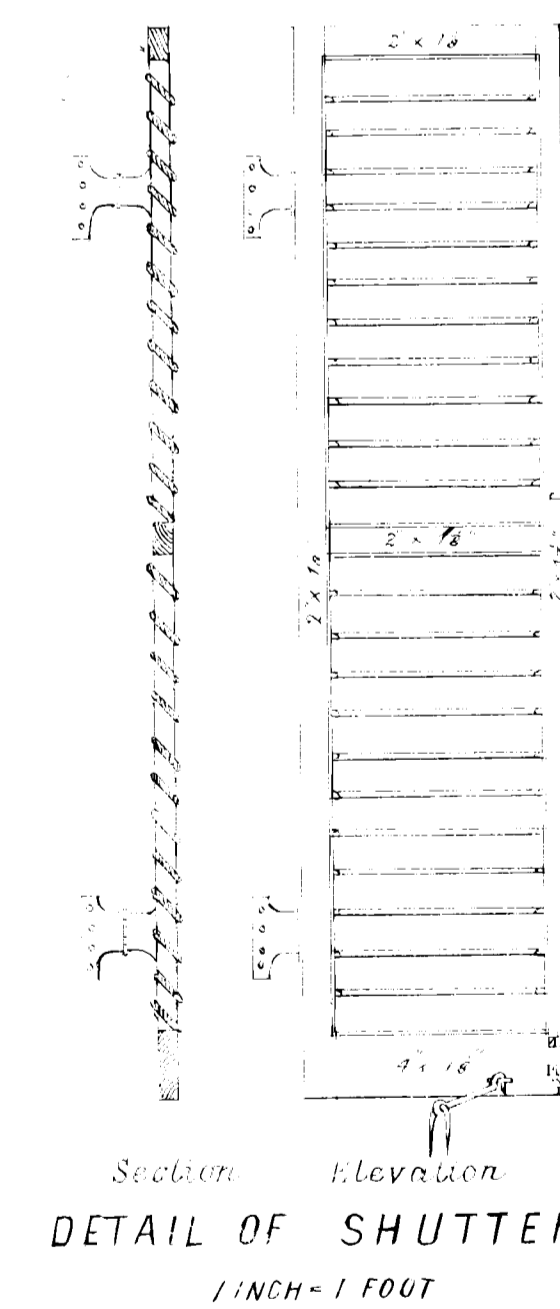
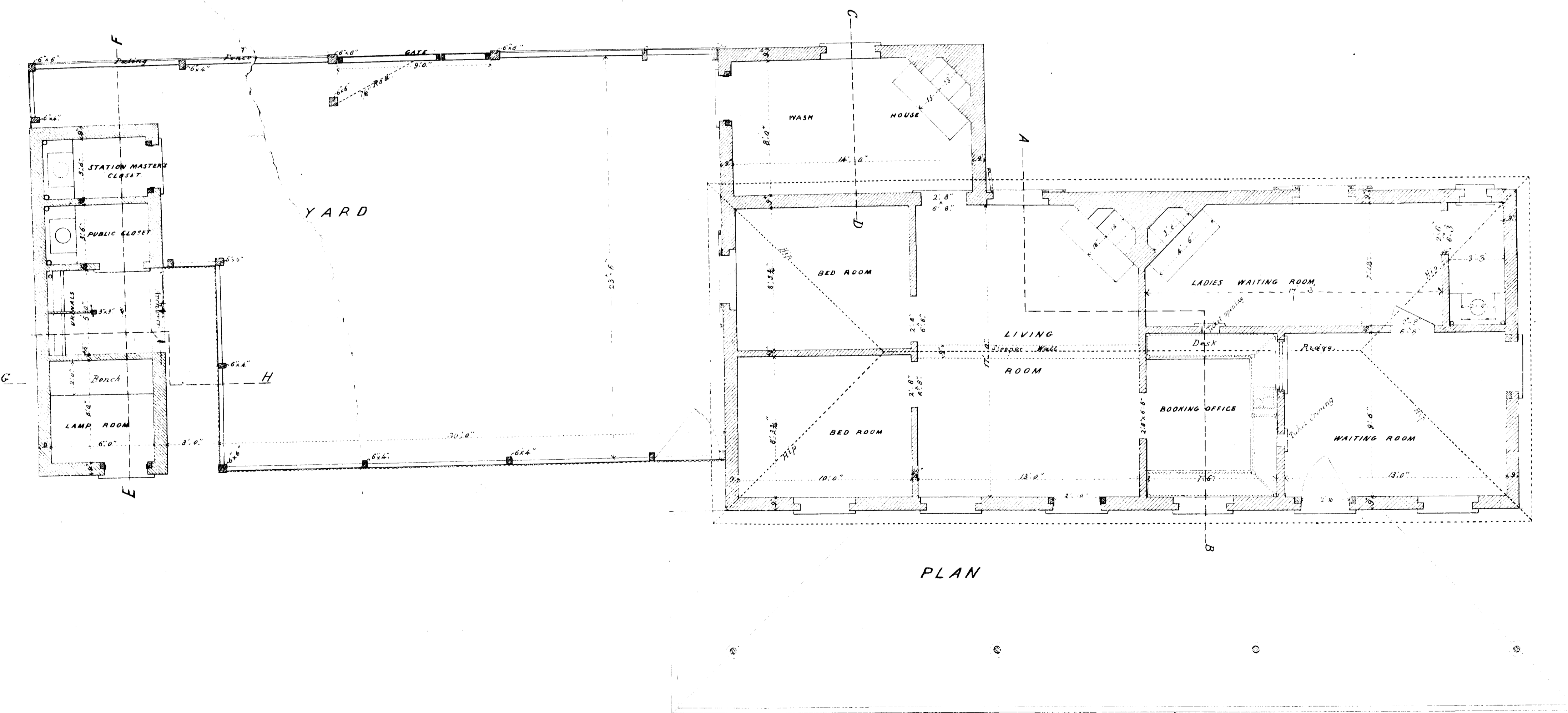
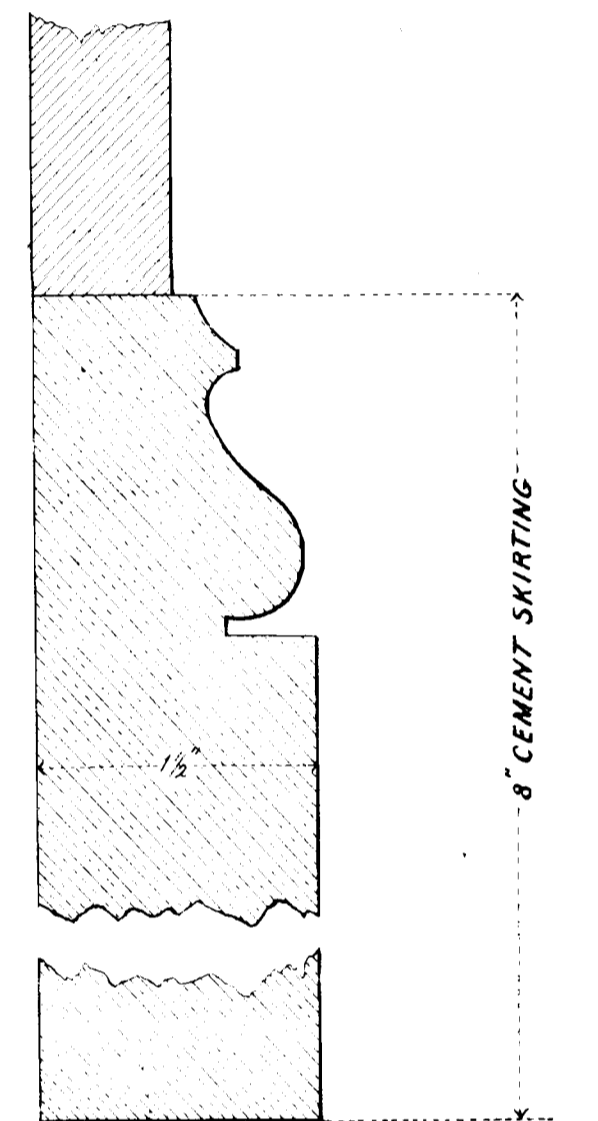
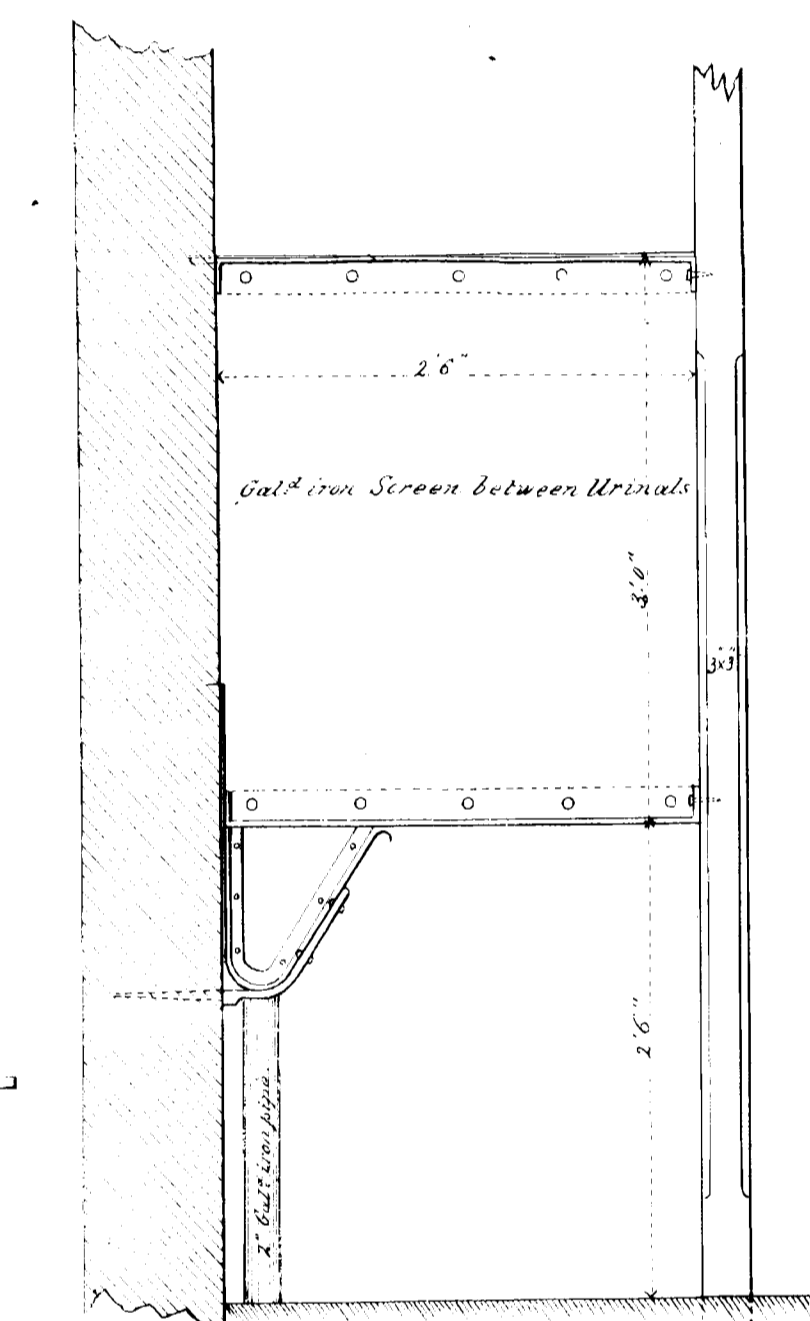
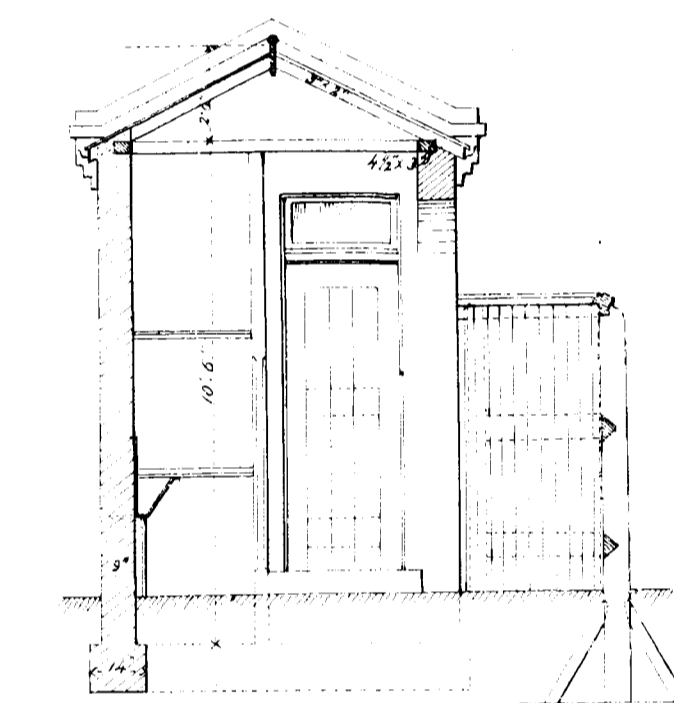
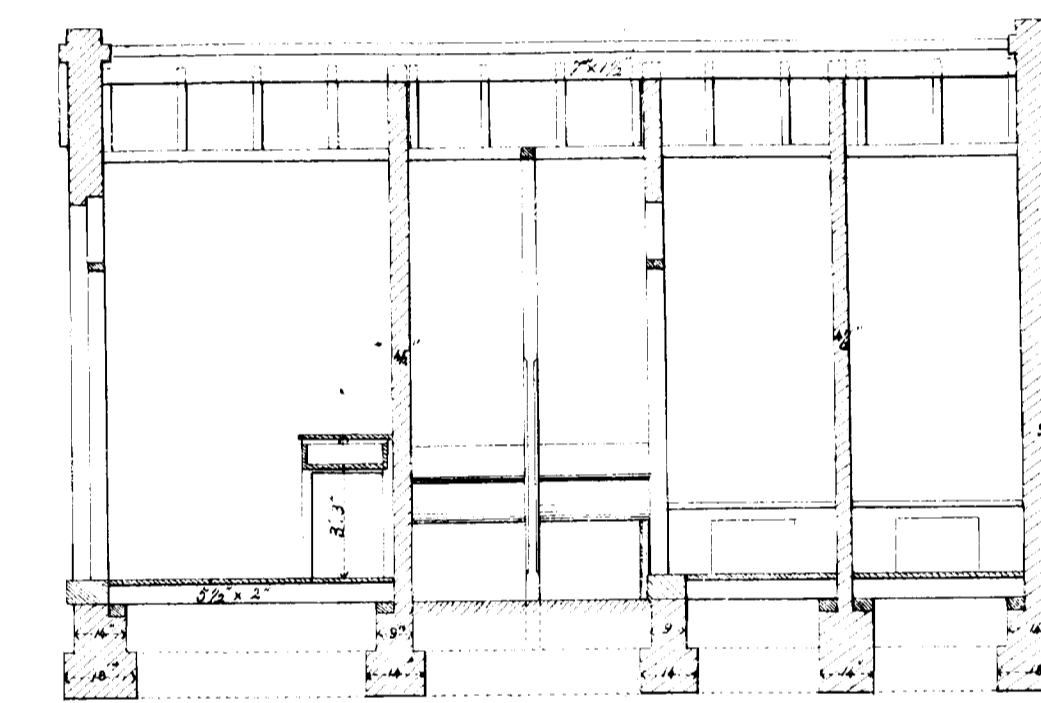
STATION BUILDINGS AT *Maree*

SCALE $\frac{1}{4}$ INCH TO ONE FOOT

CONTRACT N^o 7200
DRAWING N^o



Note:— The Foundations for this Station are in the under side of well plates in already built



RAILWAY DEPARTMENT, MELBOURNE, JAN 1877.