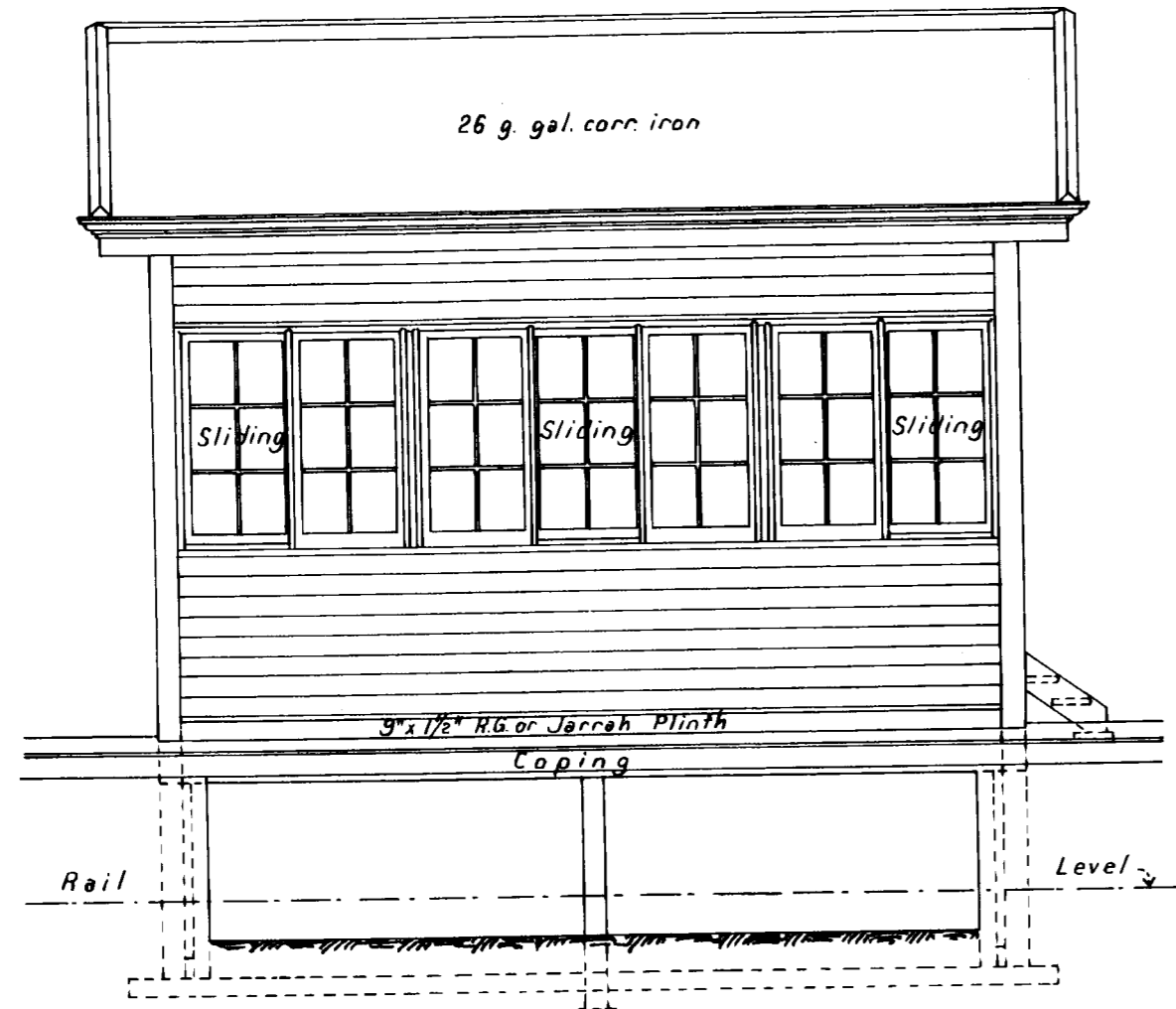
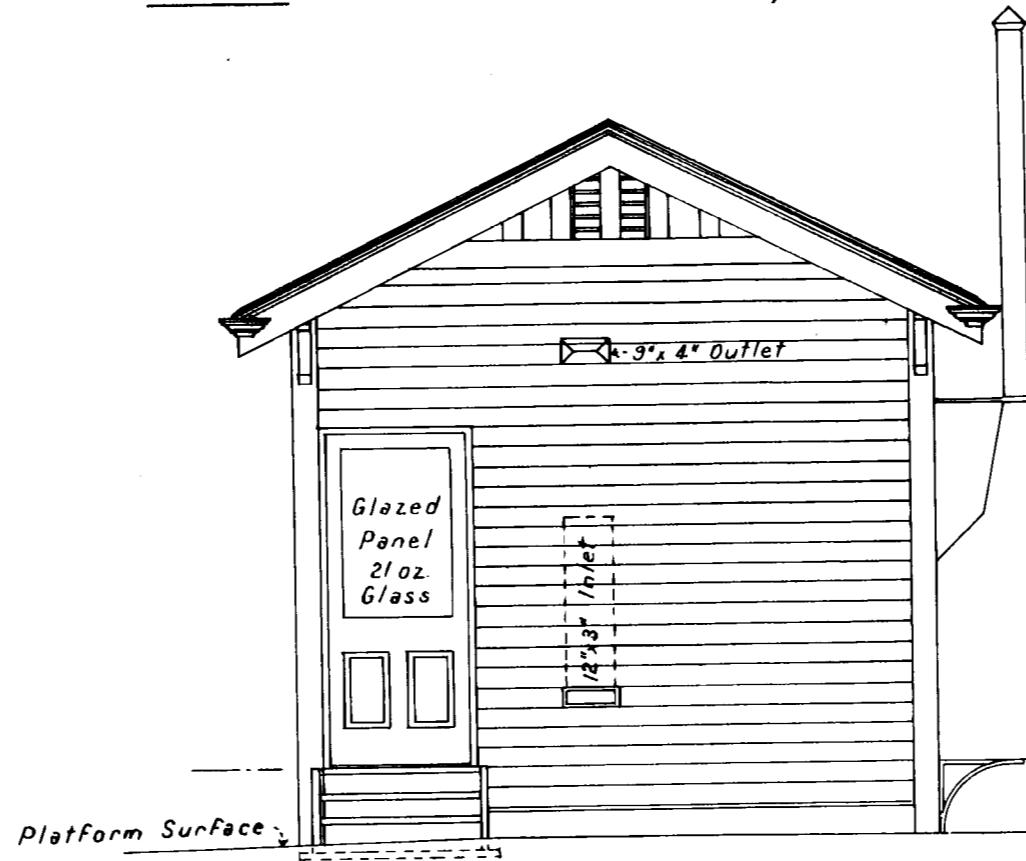


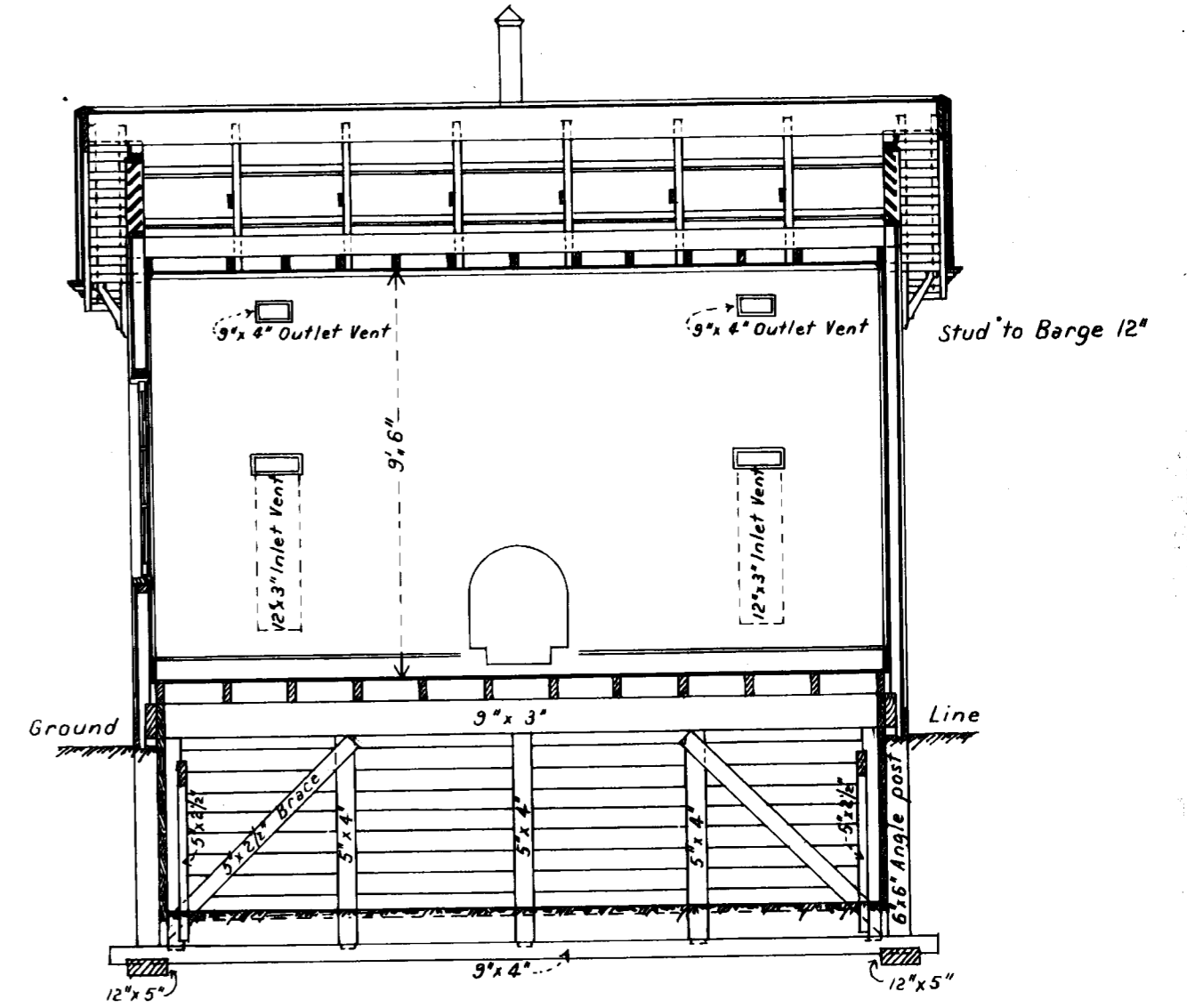
— V. R. —
— DOOEN —
— New Signal Box etc. —
— Scale 4 Ft. = 1 Inch. —
L.E.M. 2-12-10 W.W. 15/102/10.



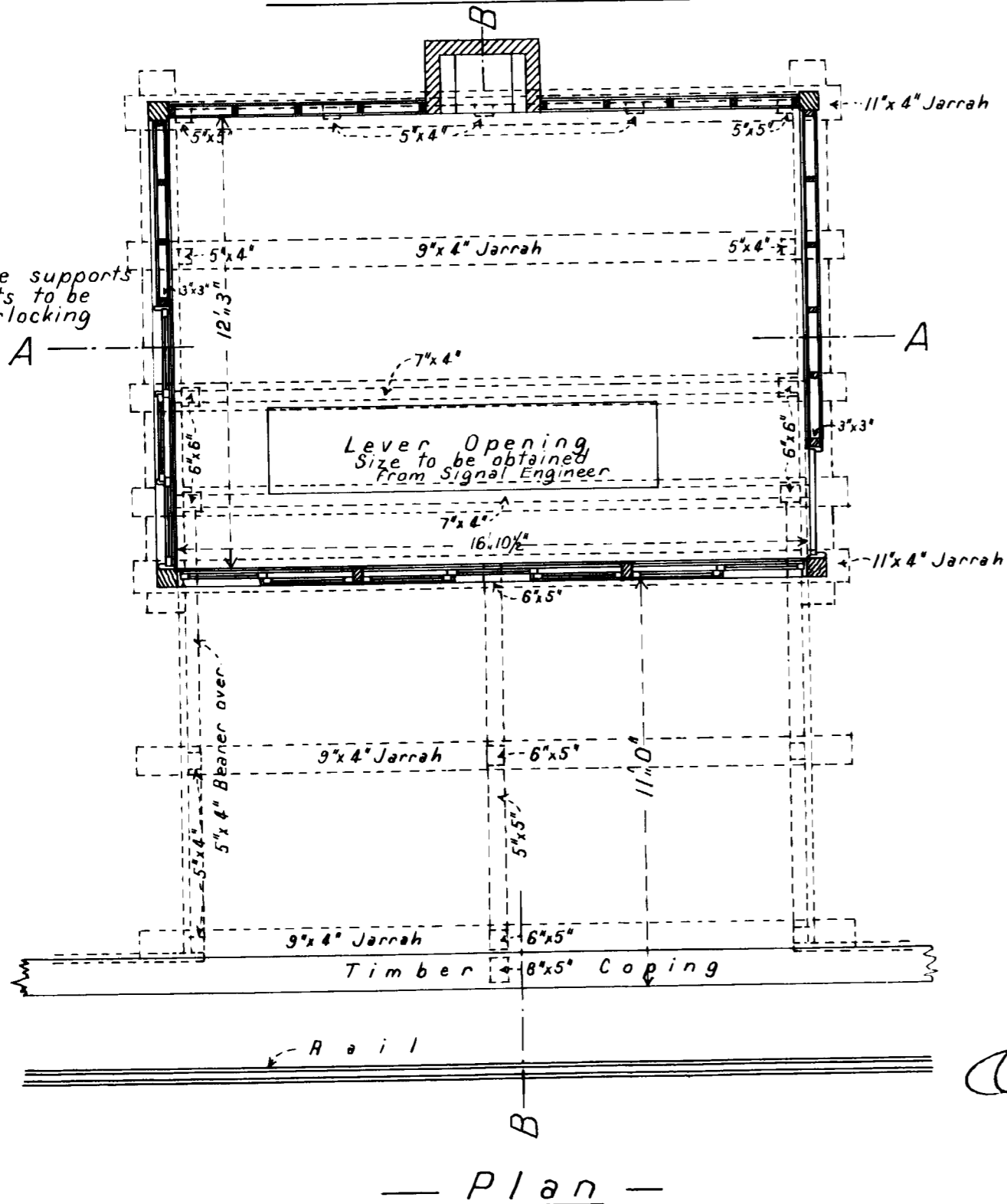
— Elevation to Platform —



— End Elevation —

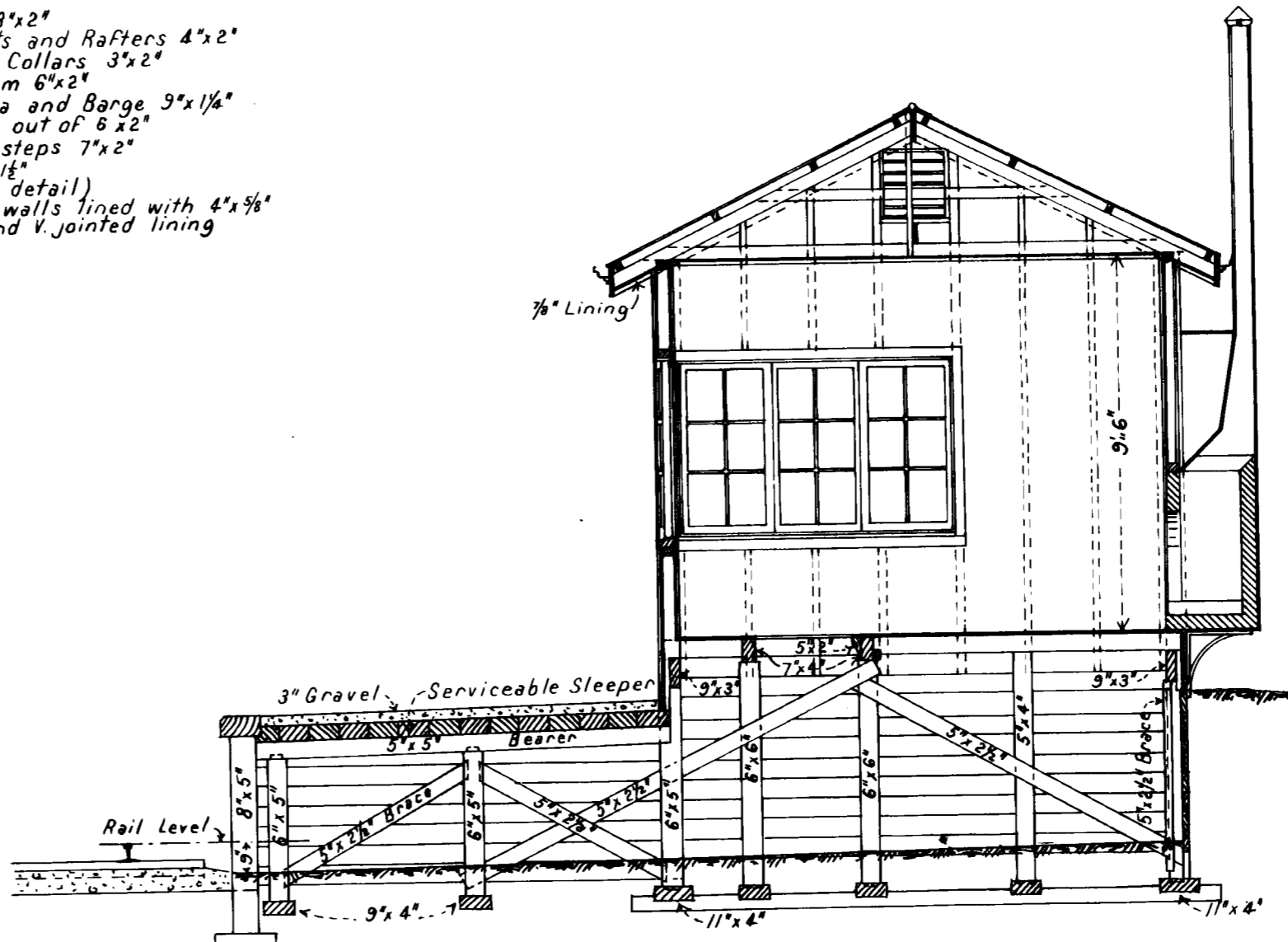


— Section A-A —

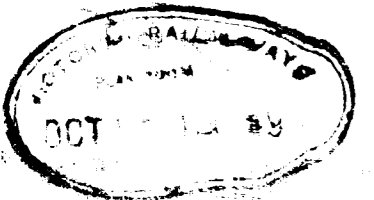


Note. Intermediate supports for 7" x 4" joists to be fixed by interlocking staff.

- Sheeting for lever pit 6" x 2" Jarrah
- Angle posts 6" x 6" Jarrah
- Floor joists 6" x 2"
- Flooring 6" x 1 1/4"
- Studs 3" x 2"
- Top plates 3" x 2"
- Ceiling joists and Rafters 4" x 2"
- Purlins and Collars 3" x 2"
- Hanging beam 6" x 2"
- Ridge, Fascia and Barge 3" x 1 1/4"
- Cover Barge out of 6" x 2"
- Strings for steps 7" x 2"
- Treads 9" x 1 1/2"
- Sashes (see detail)
- Ceiling and walls lined with 4" x 3/8"
- T. and G. and V. jointed lining



— Section B-B —



Dooen
10.12.10