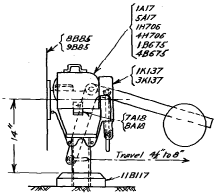


02664  
6510



Part No	Name	Mat.	Quantity
1K137	Mechanism (complete) without blinder.		1
3A137	" " " with blinder.		1
1A17	Lamp for electric light without back light.		1
4H706	" " " " " " (searchlight globe) reg'd.		1
4B675	" " oil " " " " " "		1
5A17	" " electric " with back light		1
4H706	" " " " " " (searchlight globe) reg'd.		1
4B675	" " oil " " " " " "		1
9B85	Disc complete for upper quadrant.		1
9B85	" " " lower "		1
1B117	Foundation.	Concrete	1
B622	Backsight. (as reg'd).	C.I.	1
7A18	Adjustable lamp bracket for electric light } as		1
8A18	" " " " oil " " " } reg'd.		1
1B532	Circuit controller (see B625). Plate for attaching B625.	M.S.	See *

\* When ordering 1, 2, 3 or 4H1385, type of lamp & lamp bracket required to be specified.

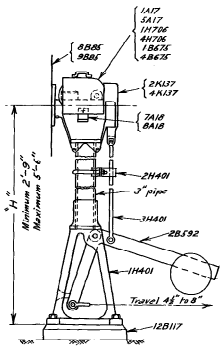
\* 1B532. M.S. plate for attaching circuit controller to be ordered when signal is to be repeated or indicated.

Note: 1. To add blinder to a signal which has no provision for attaching same, the existing spindle, guide plate, & cover, must be replaced as shown on drawing No K117.

2. 5H1385, Mechanism, Lamp bracket & Foundation created for workshop purposes only.

3. "Woodruff" Key to be fixed in position to avoid loss.

DWARF SEMAPHORE WITH BLINDER 5H1385  
" " " WITHOUT BLINDER 3H1385



Part No	Name	Mat.	Quantity
2K137	Mechanism (complete) without blinder.		1
4K137	" " " with blinder.		1
1A17	Lamp for electric light without back light.		1
4H706	" " " " " " (searchlight globe) reg'd.		1
4B675	" " oil " " " " " "		1
5A17	" " electric " with back light		1
4H706	" " " " " " (searchlight globe) reg'd.		1
4B675	" " oil " " " " " " "		1
9B85	Disc complete for upper quadrant.		1
9B85	" " " lower "		1
2B592	Crank.	M.S.	1
B622	Backsight. (as reg'd).	C.I.	1
1H401	Base.	C.I.	1
2H401	Guide.	C.I. as reg'd.	1
3H401	Down rod x 3/4" less 2 1/2"	M.S.	1
7A18	Adjustable lamp bracket for electric light } as		1
8A18	" " " " oil " " " } reg'd.		1
1B117	Foundation.	Concrete	1
1B532	Circuit controller (see B625). Plate for attaching B625.	M.S.	See *
3" Pipe	Length 2 1/2" less 2' - 1 1/2"	W.I.	1

"H" to be stated. Minimum 2'-9"

\* See above.  
Note: 1

DWARF SEMAPHORE WITH BLINDER 4H1385  
" " " WITHOUT BLINDER 2H1385

VICTORIAN RAILWAYS  
DWARF SEMAPHORE  
MECHANICAL  
TYPE "C"  
ORDERING LIST

27-10-08  
27-10-08

H1385

H1385