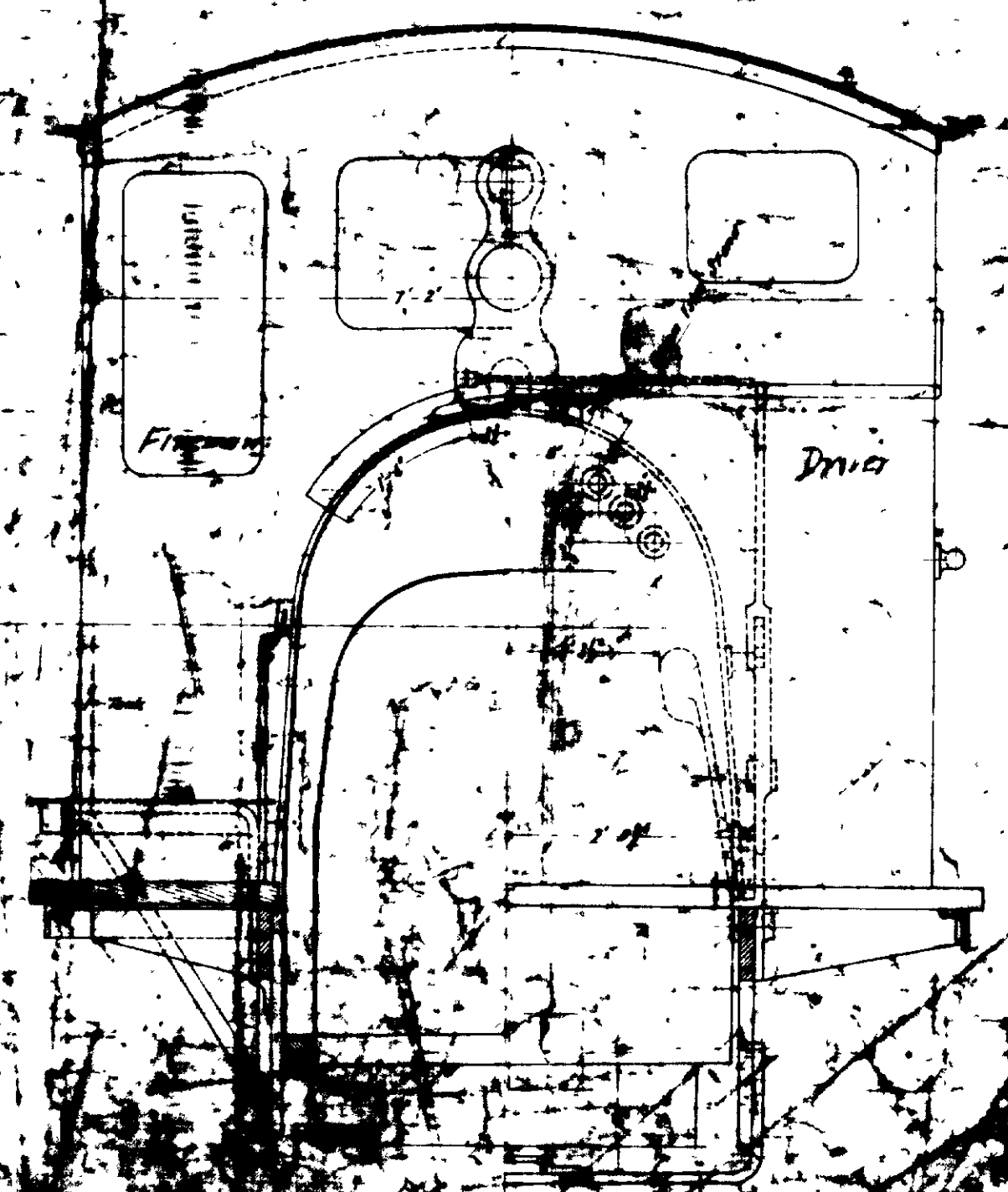
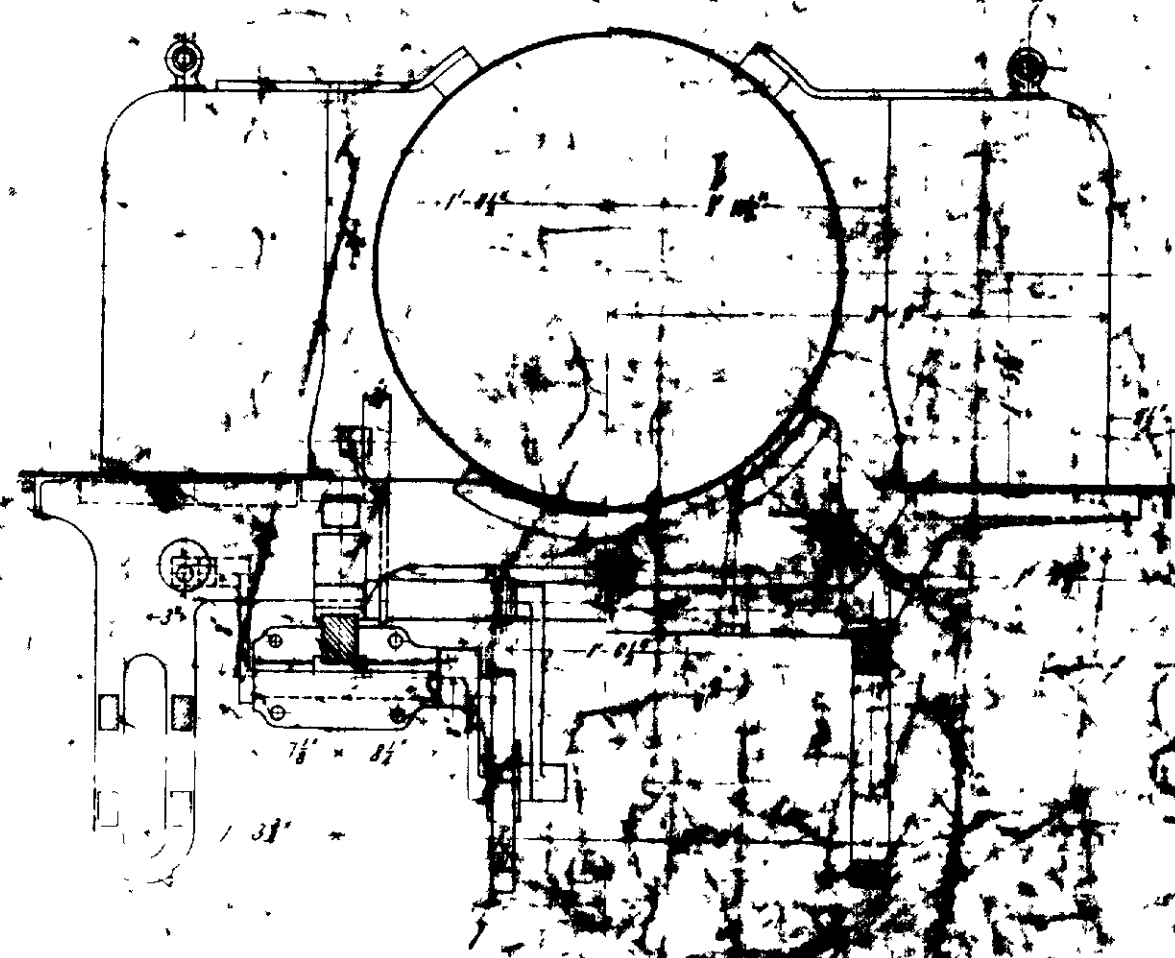
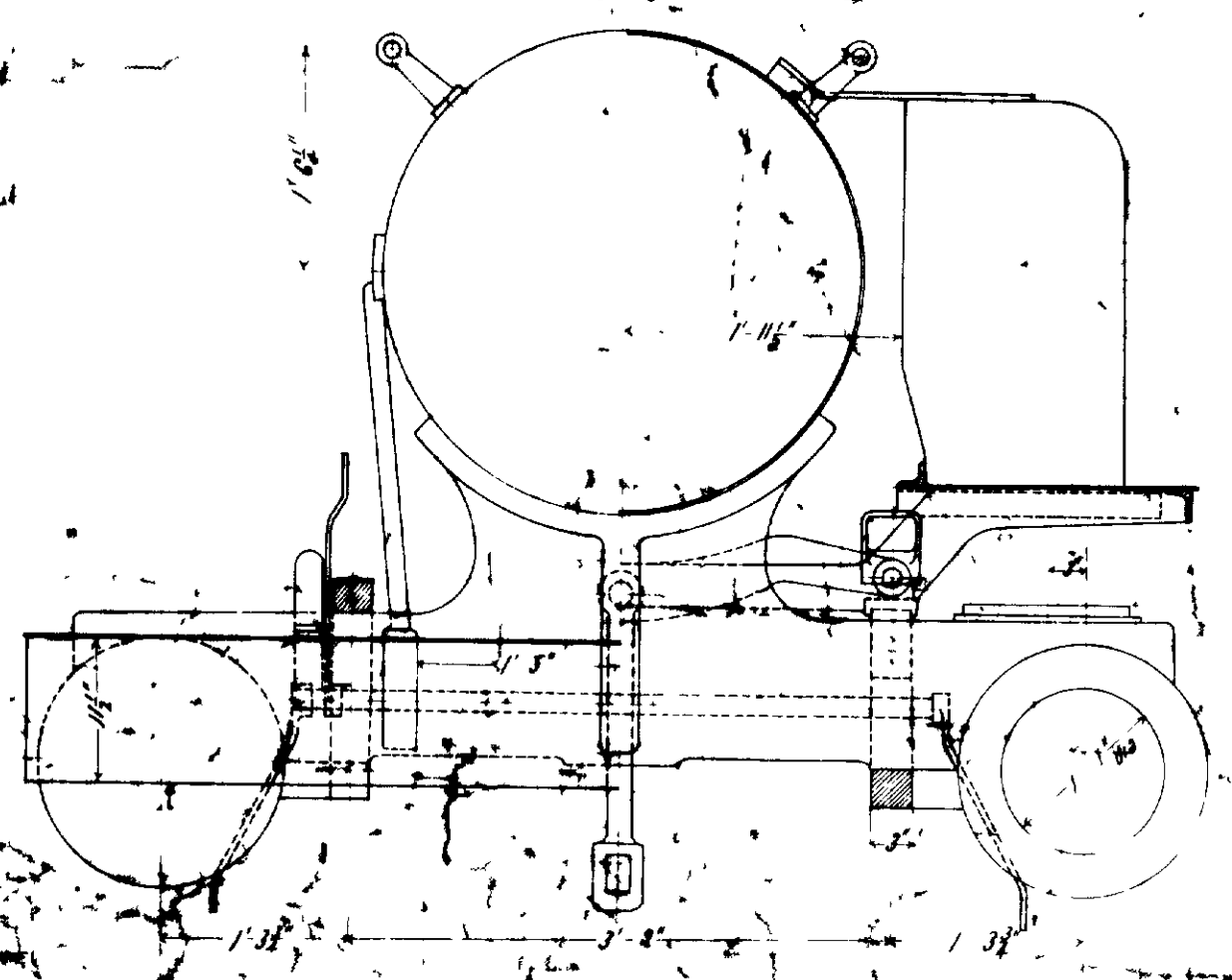
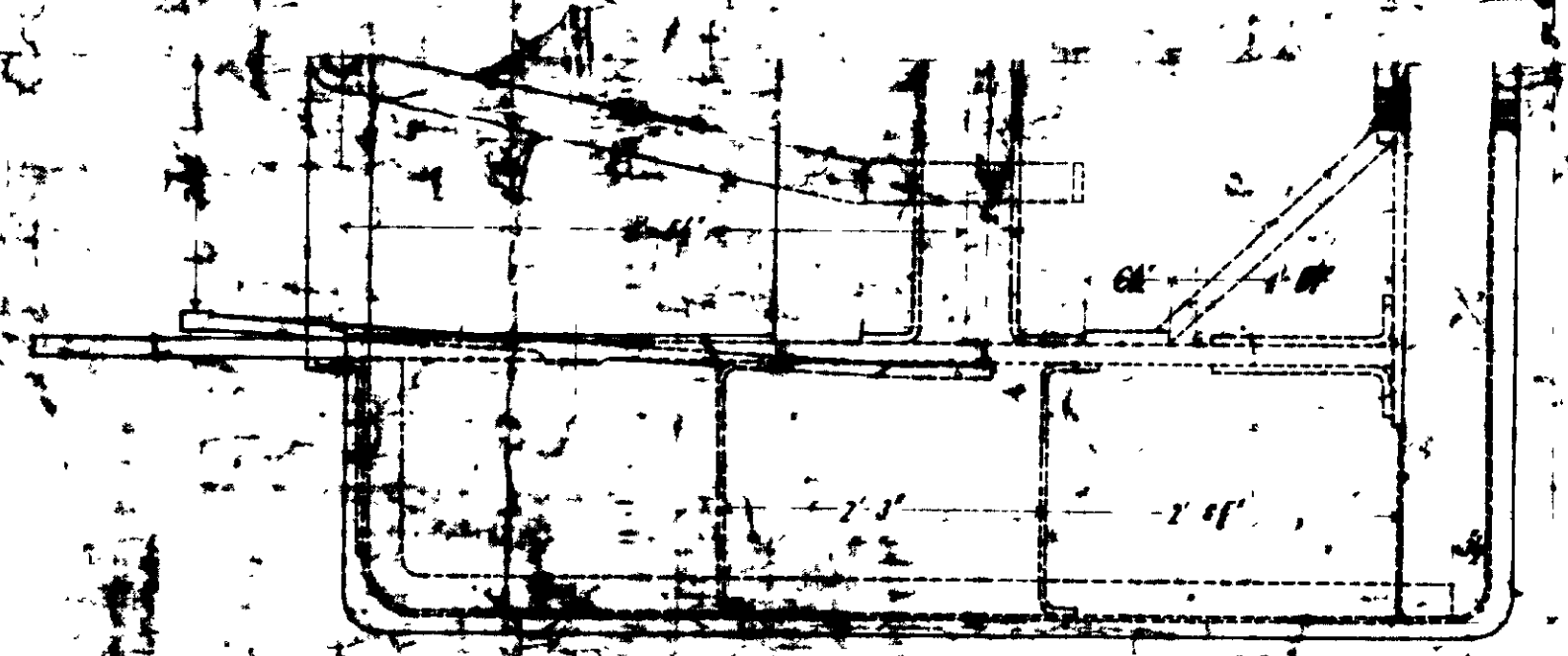
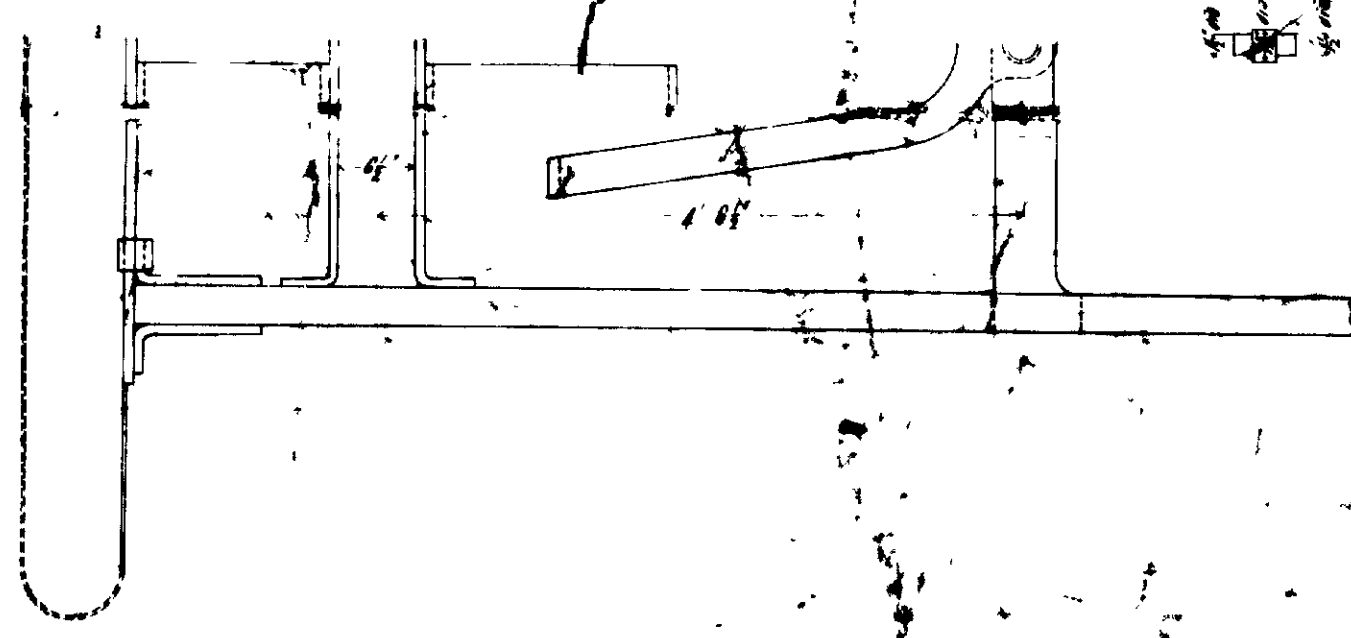
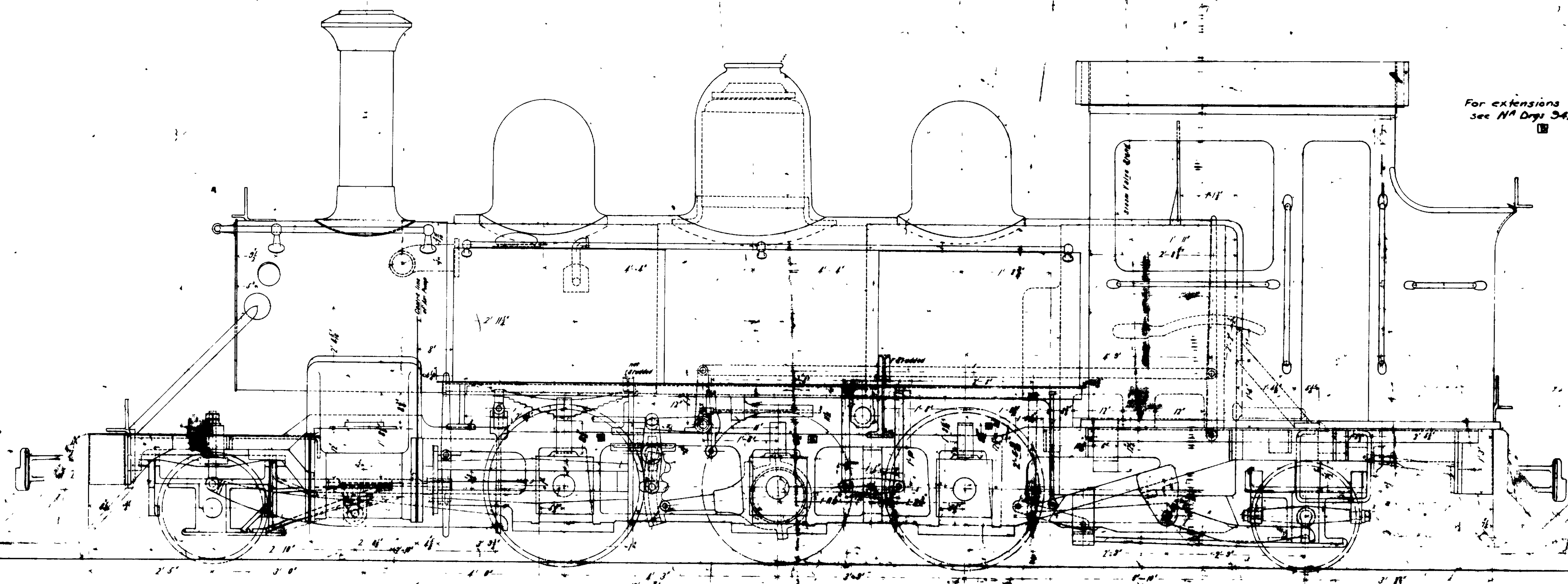


VICTORIAN RAILWAYS

C. M. E. BRANCH

2' 6" Gauge

For extensions to bunker  
see N<sup>o</sup> Drgs. 3420 & 3421



Letter	Alteration	By
A	Spring gear raised to above position	
B	Spring added to axle hole added to fitting	

GENERAL ARRANGEMENT

DRAWING N<sup>o</sup> 4025  
Traced by G. J. J.  
Exam. by H. J. J.  
30-6-30