

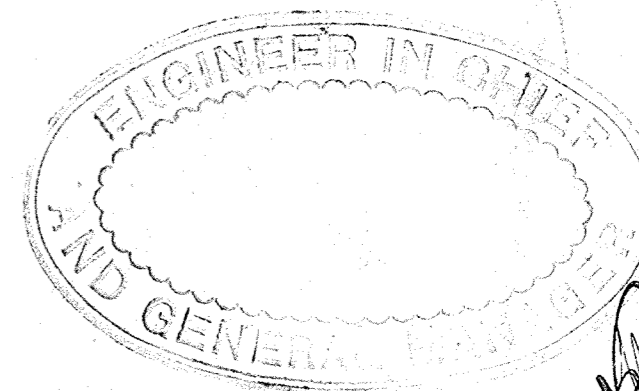
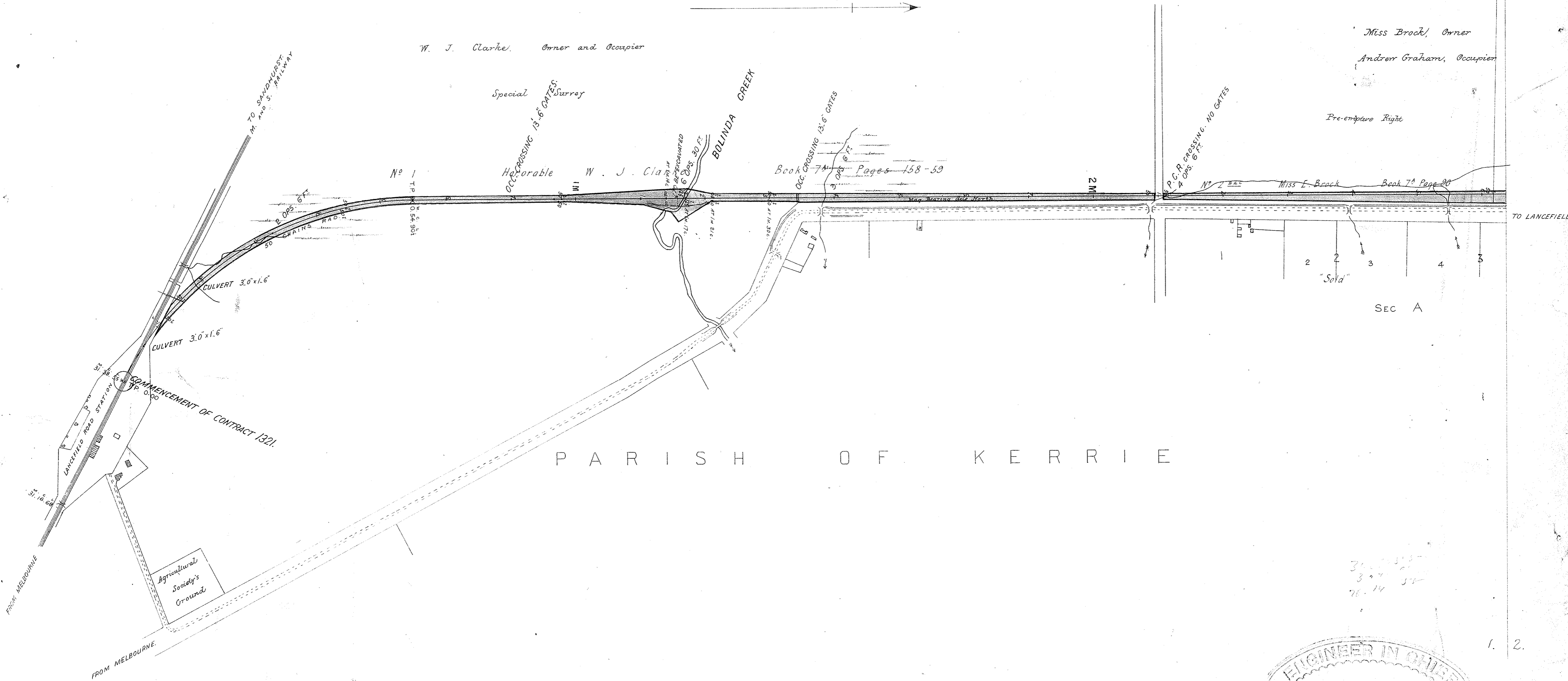
XX 58

VICTORIAN RAILWAYS, LANCEFIELD LINE.

Scale, 10 Chains to 1 Inch.

CONTRACT N^o 1321
N^o 1.

C O U N T Y O F B O U R K E



27/10/81

VICTORIAN RAILWAYS, LANCEFIELD LINE

Scale, 10 Chains to 1 Inch.

CONTRACT N^o 1321.
N^o 2.

C O U N T Y O F B O U R K E



P A R I S H O F

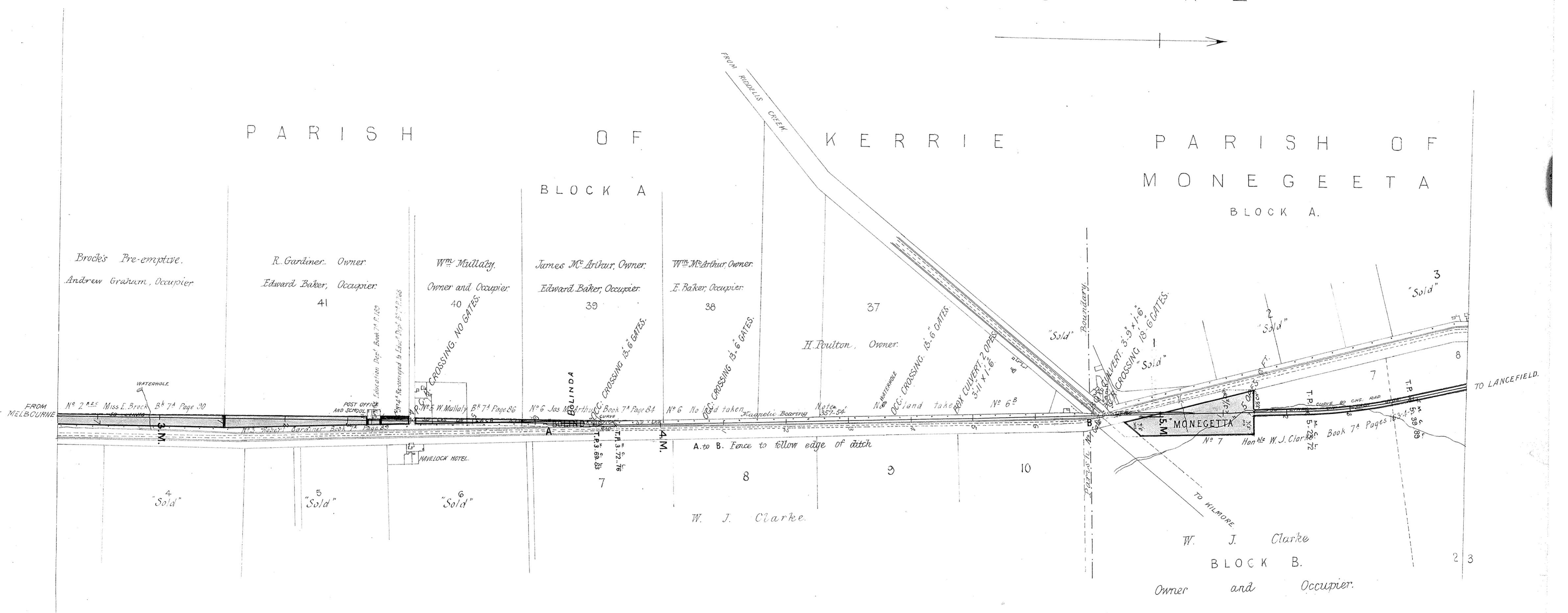
K E R R I E

P A R I S H O F

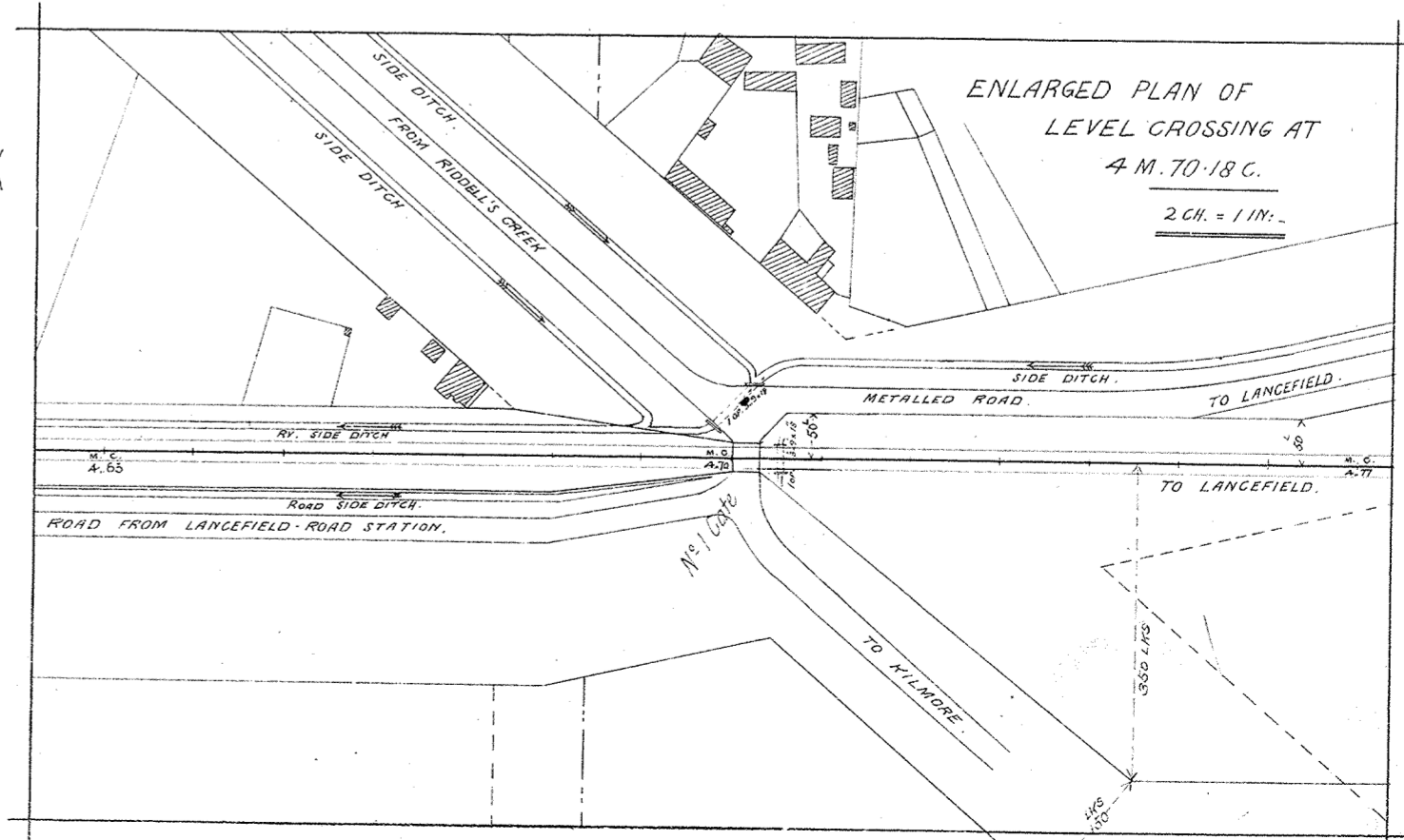
M O N E G E T A

B L O C K A

B L O C K A.



P A R I S H O F H A V E L O C K



VICTORIAN RAILWAYS,

LANCEFIELD LINE

Scale, 10 Chains to 1 Inch.

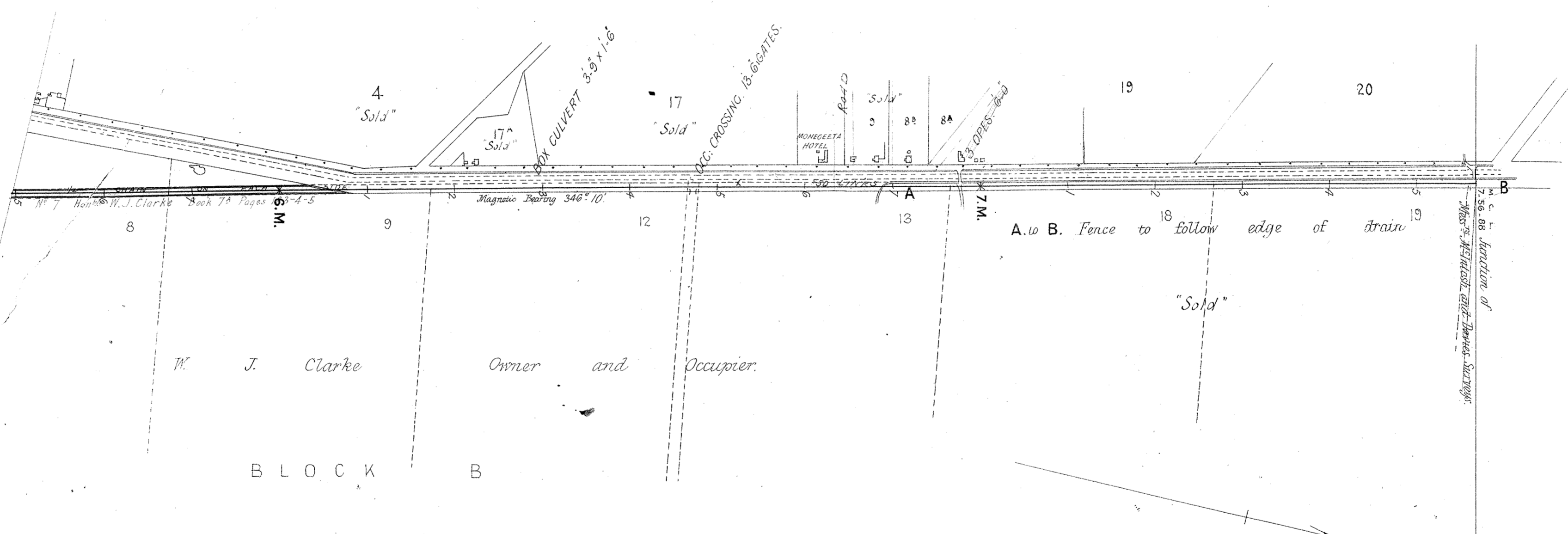
CONTRACT N^o 1321.

N^o 3.

C O U N T Y O F B O U R K E

P A R I S H O F M O N E G E E T A

B L O C K A



B L O C K B

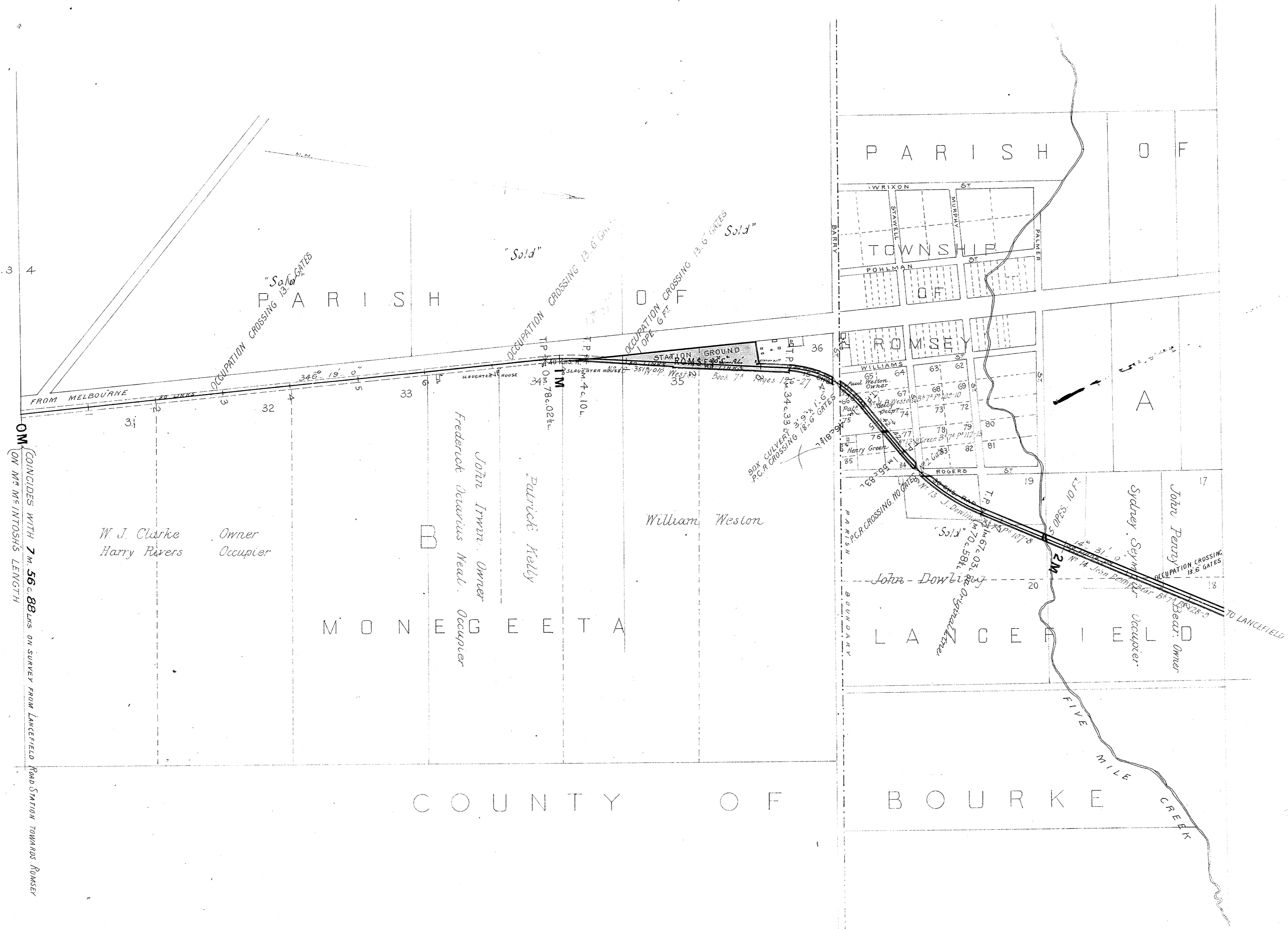
VICTORIAN RAILWAYS, LANCEFIELD LINE

Scale, 10 Chains to 1 Inch.

CONTRACT Nº 1321

Nº 4

7 11 11
7 11 11
9 11 11



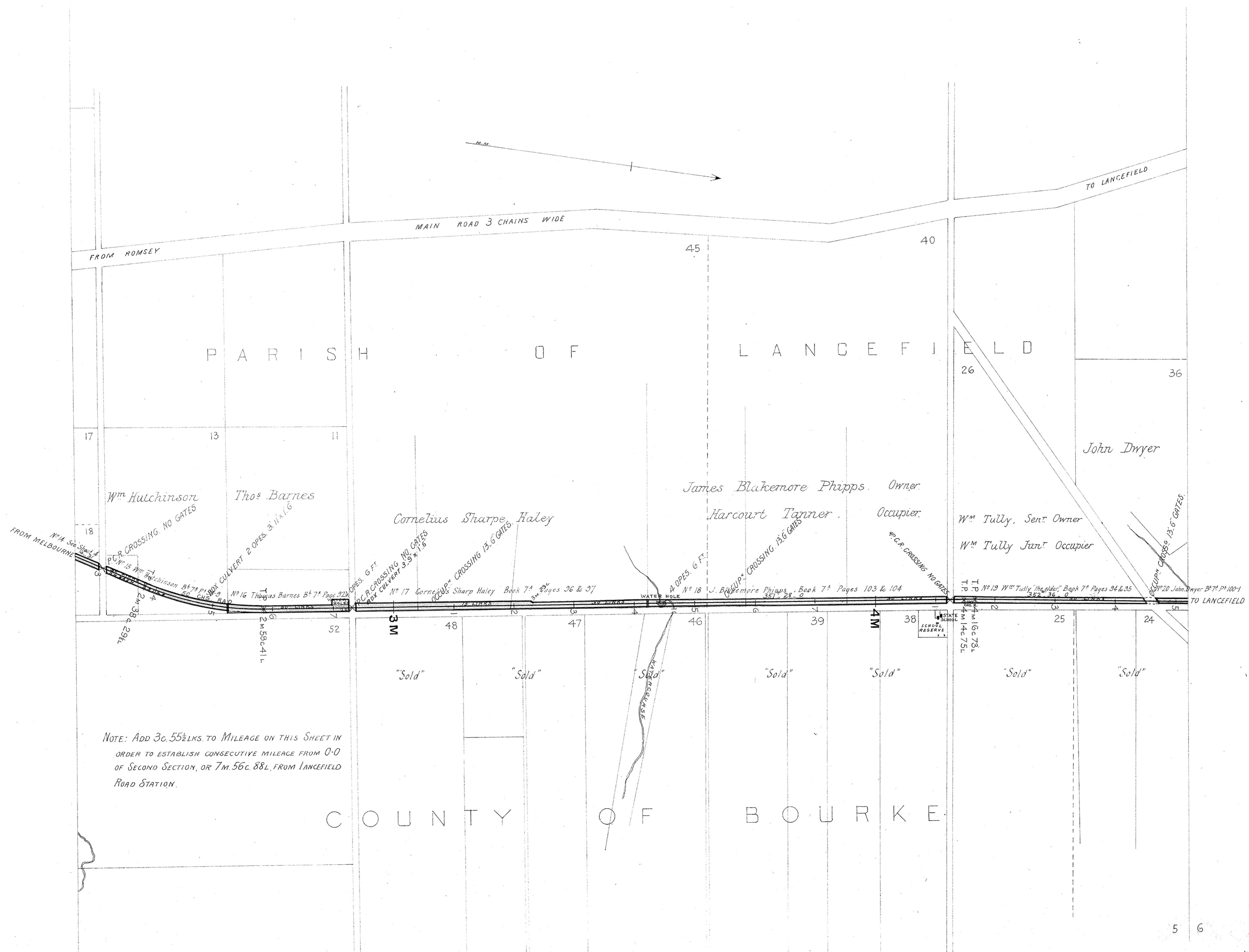
OM
COINCIDES WITH 7 M. 56 C. 88 L. ON SURVEY FROM LANCEFIELD ROAD STATION TOWARDS ROMSEY
ON THE INTENSIVE LENGTH

NOTE: FROM T.P. AT 1 M. 70 C. 58 1/2 L. Add 3 C. 55 1/2 L. TO MILEAGE ON PLAN
IN ORDER TO ESTABLISH CONSECUTIVE MILEAGE FROM 0-0 OF SECOND LENGTH OR 7 M. 56 C. 88 L. FROM LANCEFIELD ROAD STATION

VICTORIAN RAILWAYS, LANCEFIELD LINE

CONTRACT N^o 1321
N^o 5

Scale, 10 Chains to 1 Inch

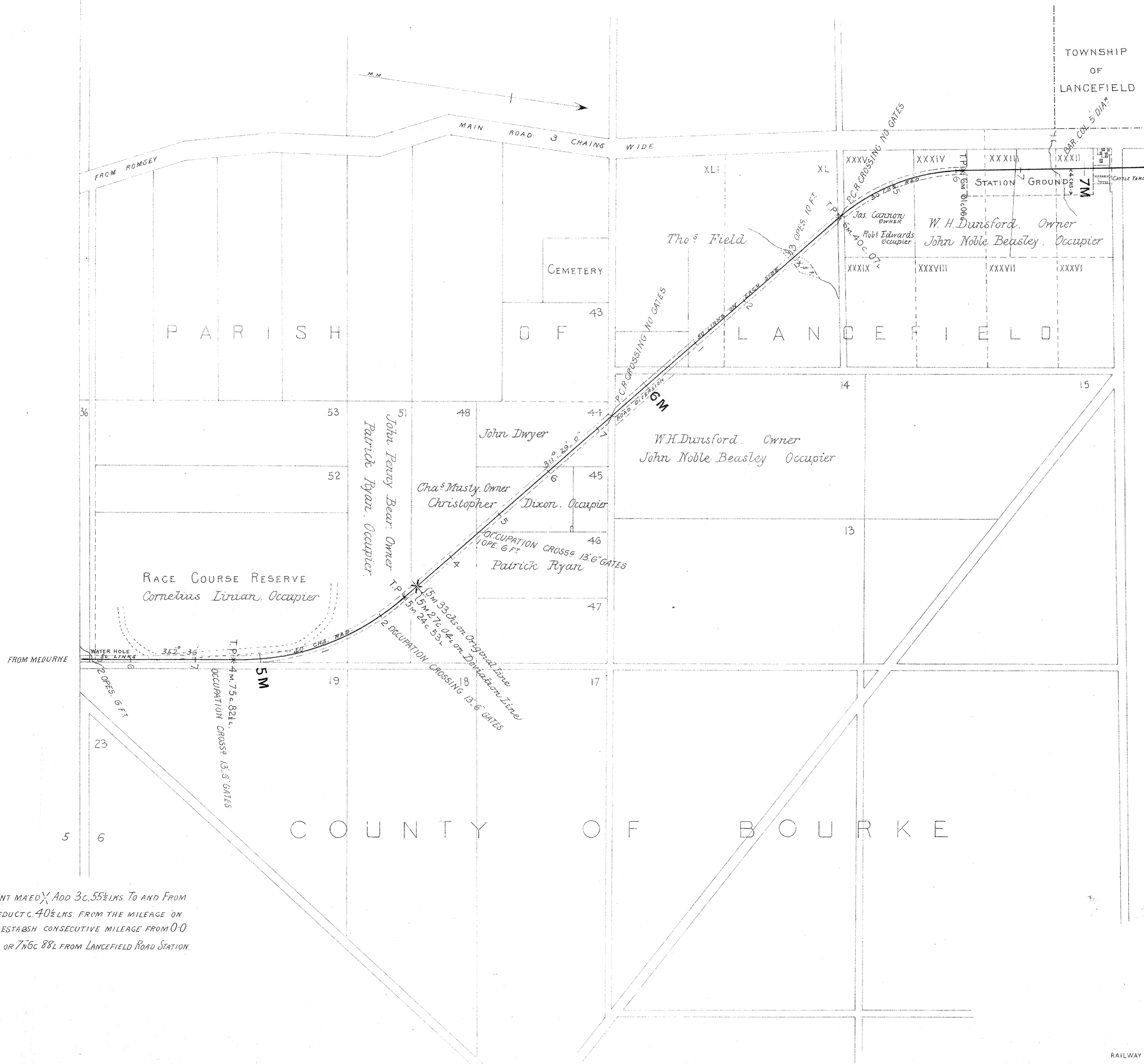


NOTE: ADD 3c. 55½ LKS. TO MILEAGE ON THIS SHEET IN ORDER TO ESTABLISH CONSECUTIVE MILEAGE FROM 0-0 OF SECOND SECTION, OR 7m. 56c. 88L. FROM LANCEFIELD ROAD STATION.

VICTORIAN RAILWAYS, LANCEFIELD LINE

Scale, 10 Chains to 1 Inch.

CONTRACT N^o 1321
N^o 6

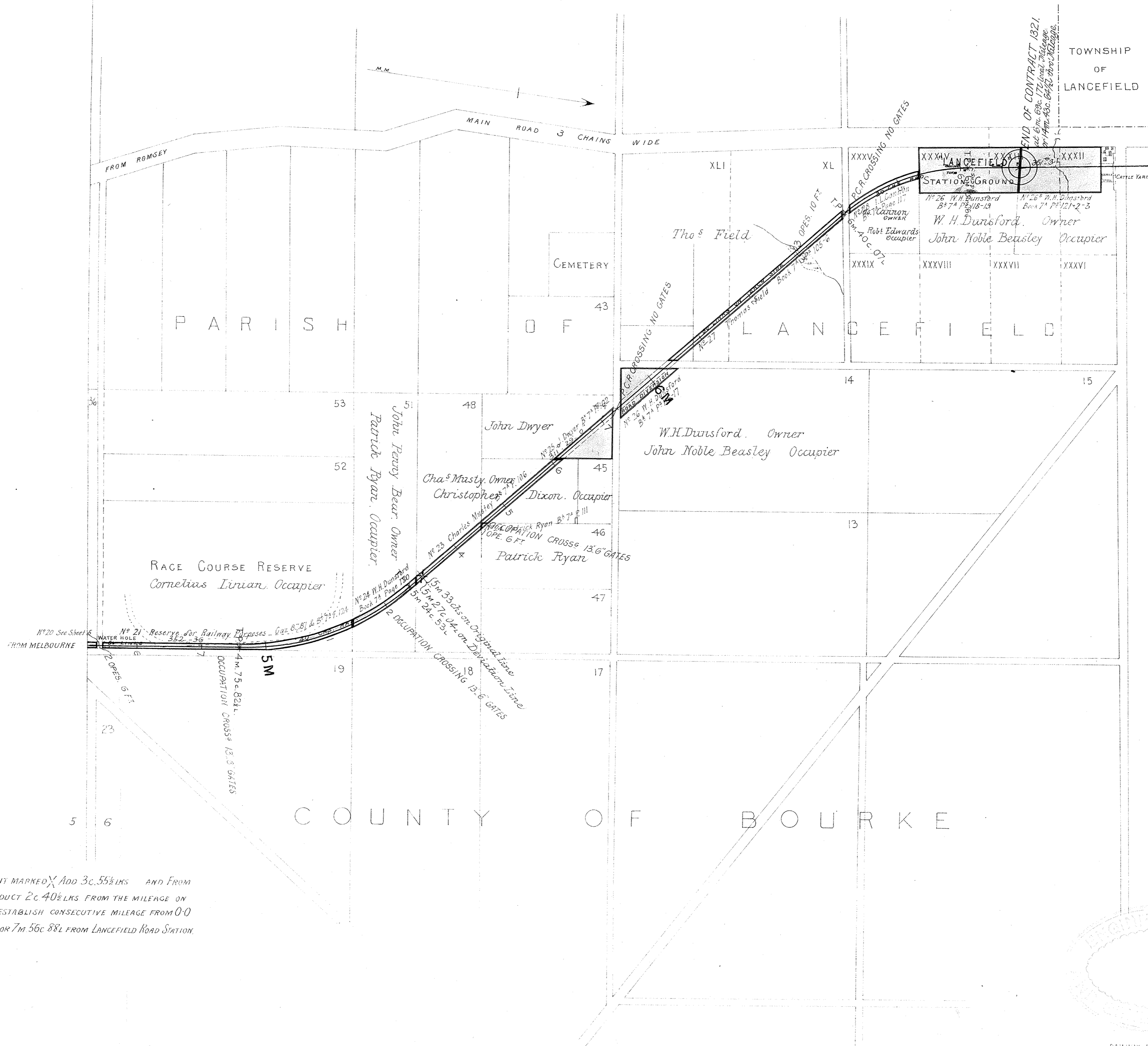


NOTE. UP TO THE POINT MARKED X ADD 3c. 55 1/2 LKS. TO AND FROM THE SAME POINT DEDUCT C. 40 1/2 LKS. FROM THE MILEAGE ON PLAN IN ORDER TO ESTABLISH CONSECUTIVE MILEAGE FROM 0-0 OF SECOND SECTION OR 7N6C 88L FROM LANCEFIELD ROAD STATION.

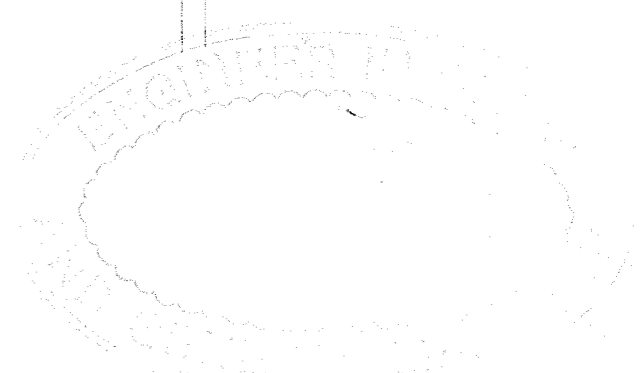
VICTORIAN RAILWAYS, LANCEFIELD LINE

Scale, 10 Chains to 1 Inch.

**CONTRACT N^o 1321.
N^o 6^a**



NOTE: UP TO THE POINT MARKED X ADD 3c.55 1/2 LKS AND FROM THE SAME POINT DEDUCT 2c.40 1/2 LKS FROM THE MILEAGE ON PLAN IN ORDER TO ESTABLISH CONSECUTIVE MILEAGE FROM 0-0 OF SECOND SECTION OR 7M 56c.88 L FROM LANCEFIELD ROAD STATION.



Victorian Railways

⑦

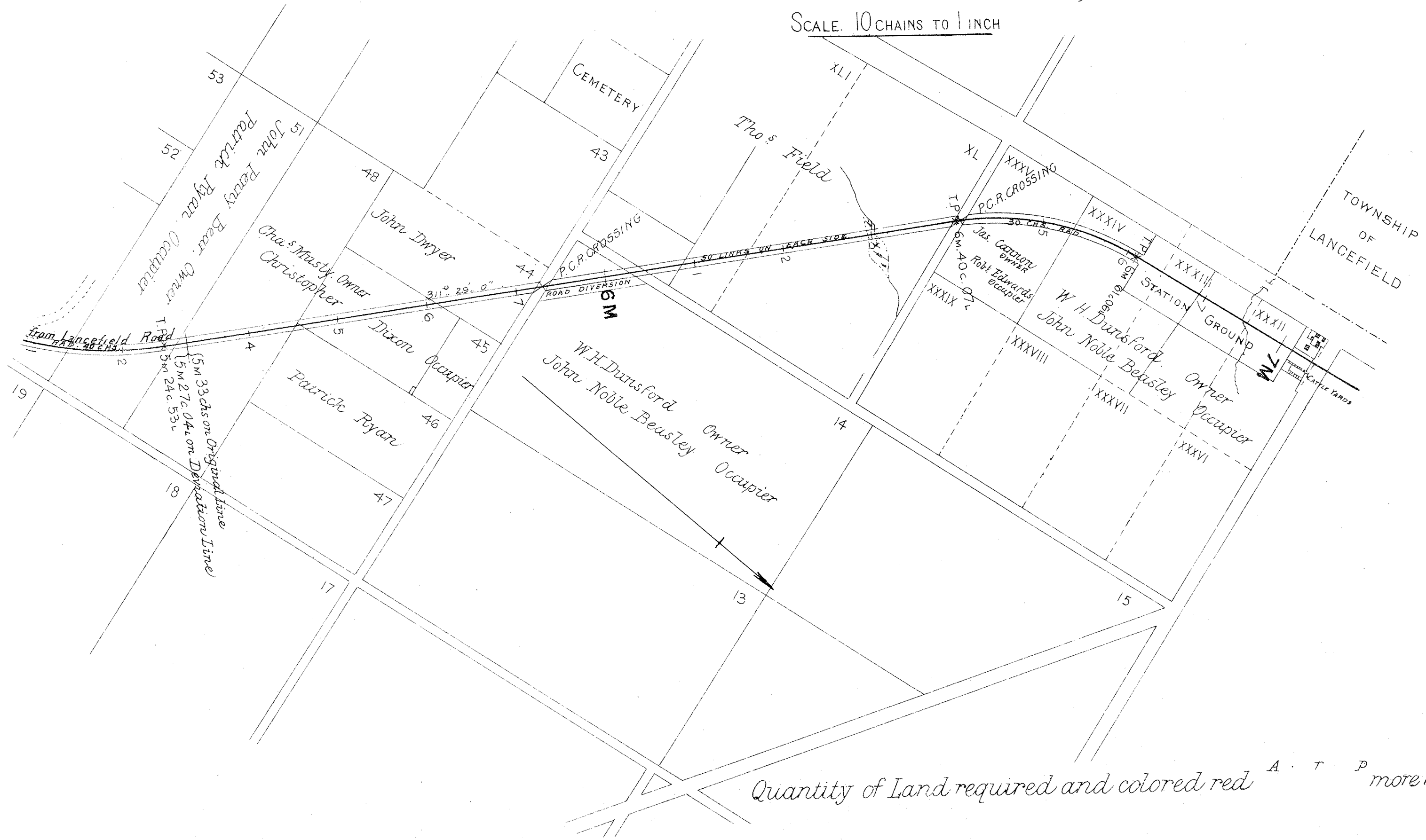
LANCEFIELD LINE

Plan of Land referred to in Notice to Treat N^o.....

belonging to.....

Situated in the Parish of Lancefield in the County of Bourke

SCALE. 10 CHAINS TO 1 INCH

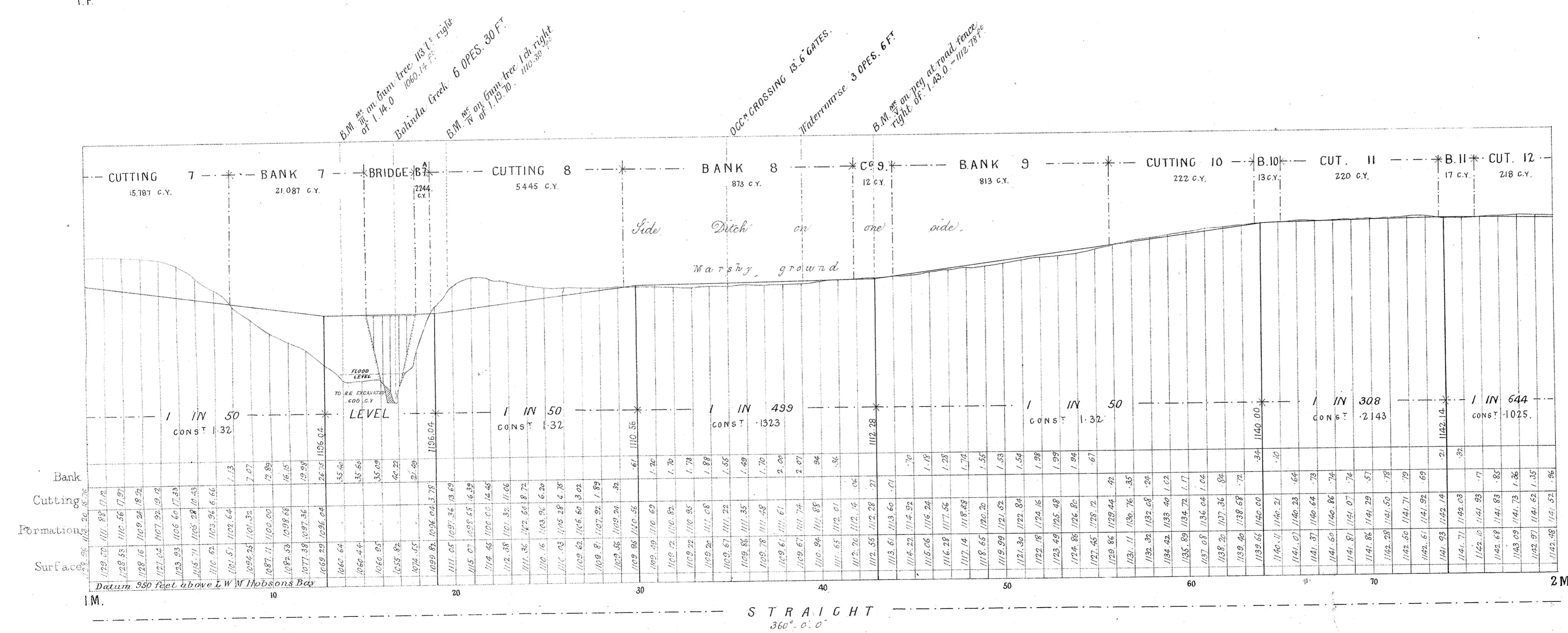
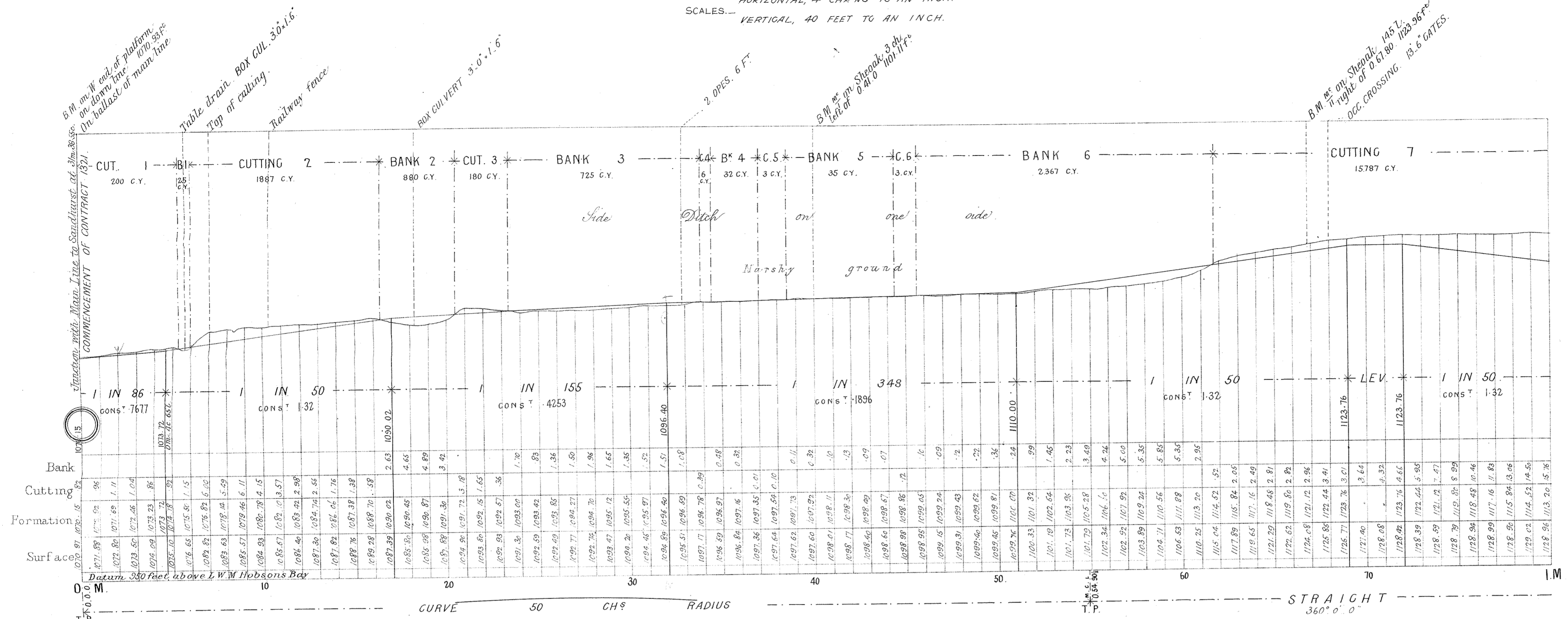


Quantity of Land required and colored red A. T. P. more or less
No. 1831 '90.

VICTORIAN RAILWAYS, LANCEFIELD LINE

**CONTRACT N^o 1321
N^o 1.**

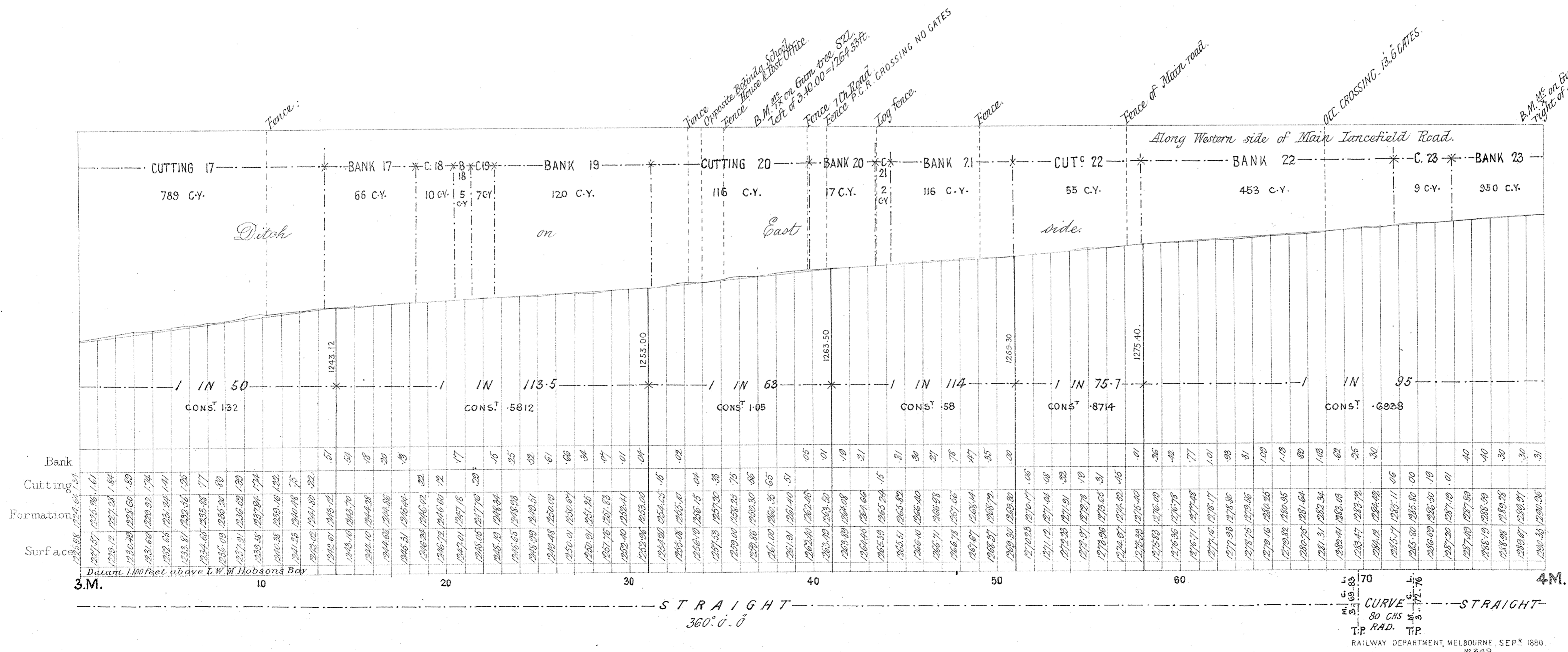
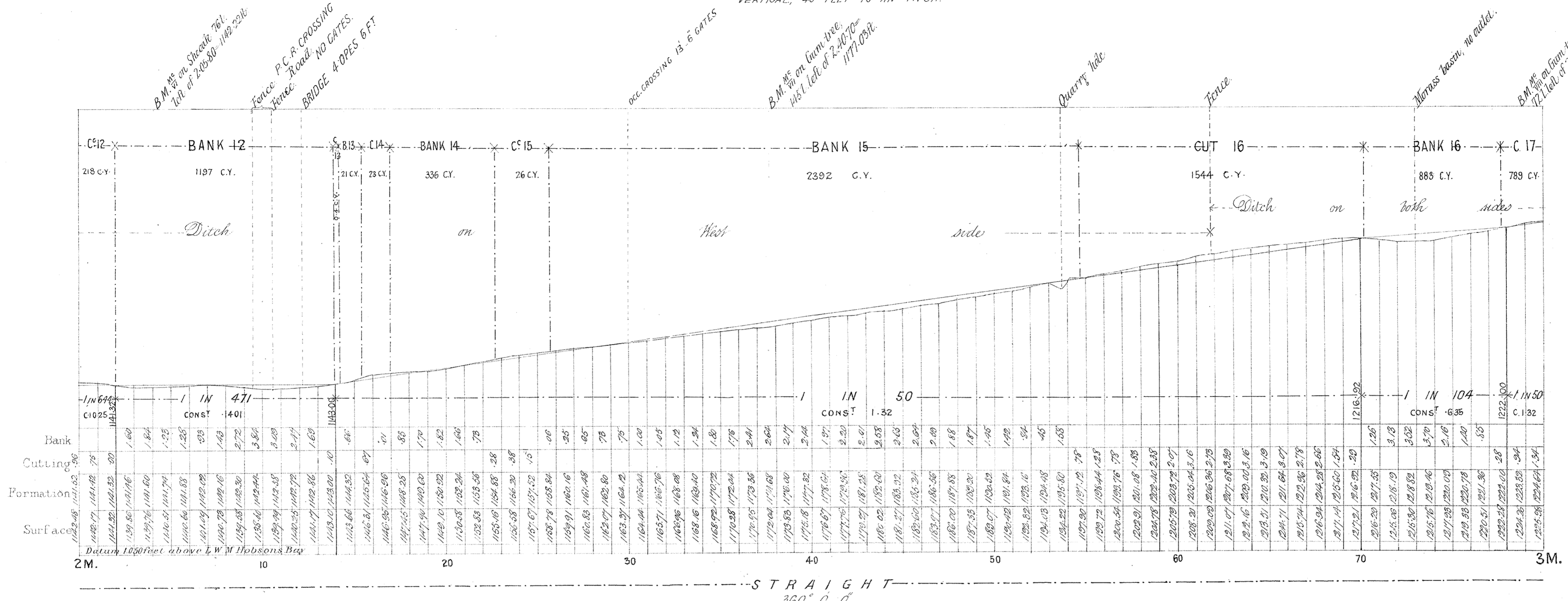
HORIZONTAL, 4 CHAINS TO AN INCH.
VERTICAL, 40 FEET TO AN INCH.



VICTORIAN RAILWAYS, LANCEFIELD LINE

**CONTRACT N^o 1321
N^o 2**

HORIZONTAL, 4 CHAINS TO AN INCH.
VERTICAL, 40 FEET TO AN INCH.



VICTORIAN RAILWAYS, LANCEFIELD LINE

CONTRACT N^o 1321

N^o 3

HORIZONTAL, 4 CHAINS TO AN INCH.
VERTICAL, 40 FEET TO AN INCH.

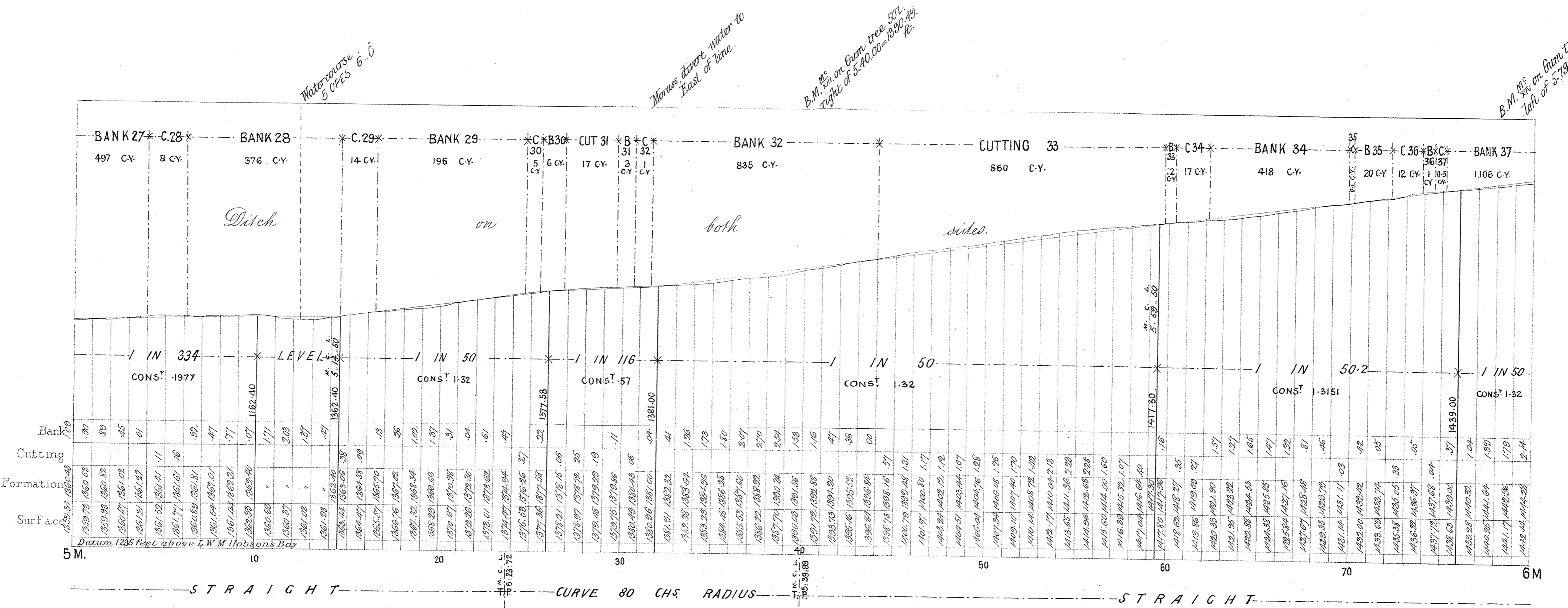
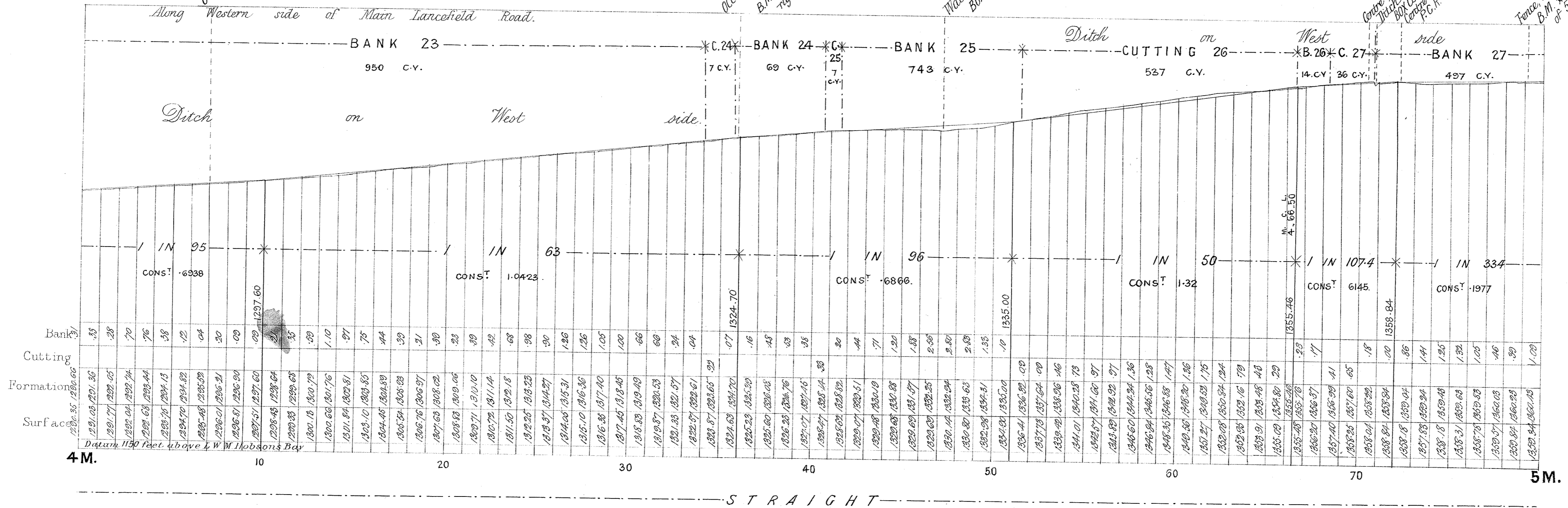
O.C.M. CROSSING IS 6 GATES.

O.C.M. CROSSING IS 6 GATES.
B.M. 85 on Elm tree 220'.
Right of 4.40.00 = 1325.50R.

Watercourse
BOX CULVERT 70 FEET.
3-11 x 1.6.

Centre of metal Roadfalls on Road
B.M. 86 on Elm tree 220'.
Right of 4.40.00 = 1325.50R.

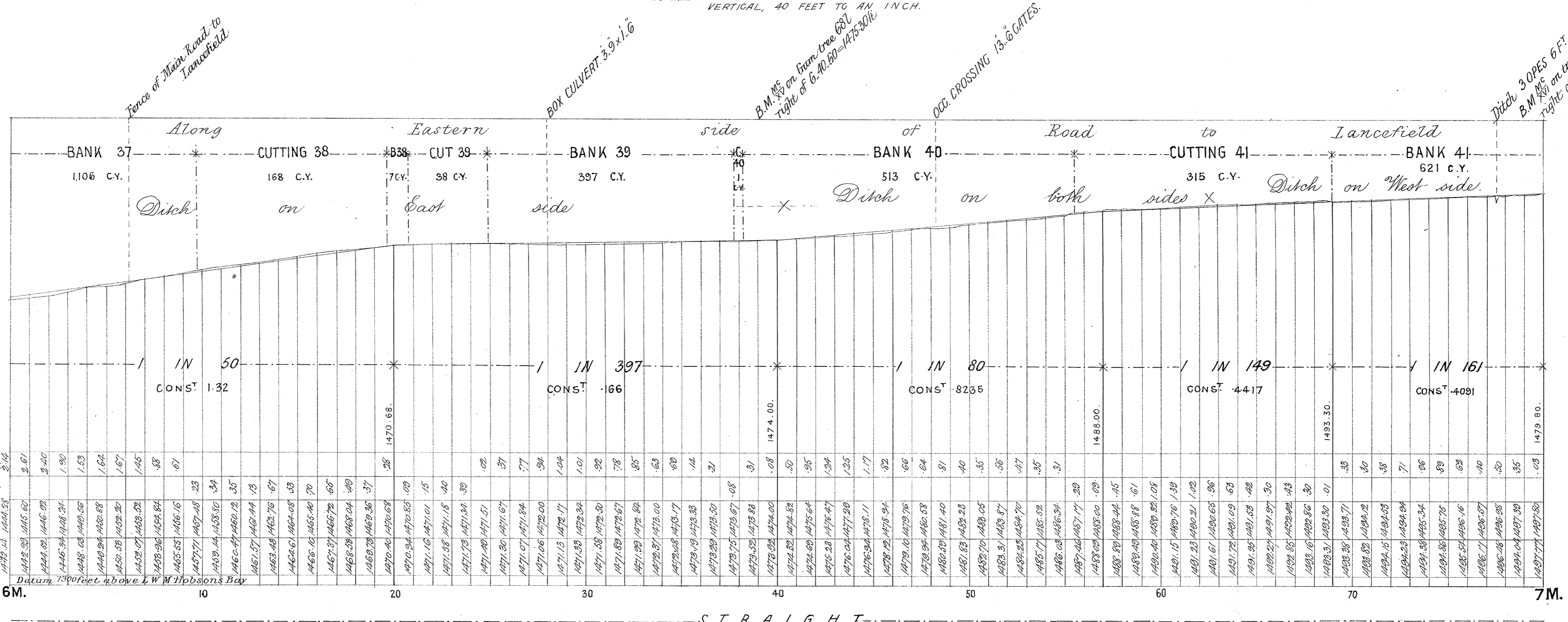
Fence, side of Lancefield Rd.
B.M. 87 on Elm tree 220'.
Right of 4.40.00 = 1325.50R.



VICTORIAN RAILWAYS, LANCEFIELD LINE

**CONTRACT N^o 1321
N^o 4.**

HORIZONTAL, 4 CHAINS TO AN INCH.
VERTICAL, 40 FEET TO AN INCH.



Force of Main Road to Lancefield

BOX CULVERT 3.9 x 1.6

B.M. No. 40 on gum tree 687. Right of 6.40.80-1475.30 1/2

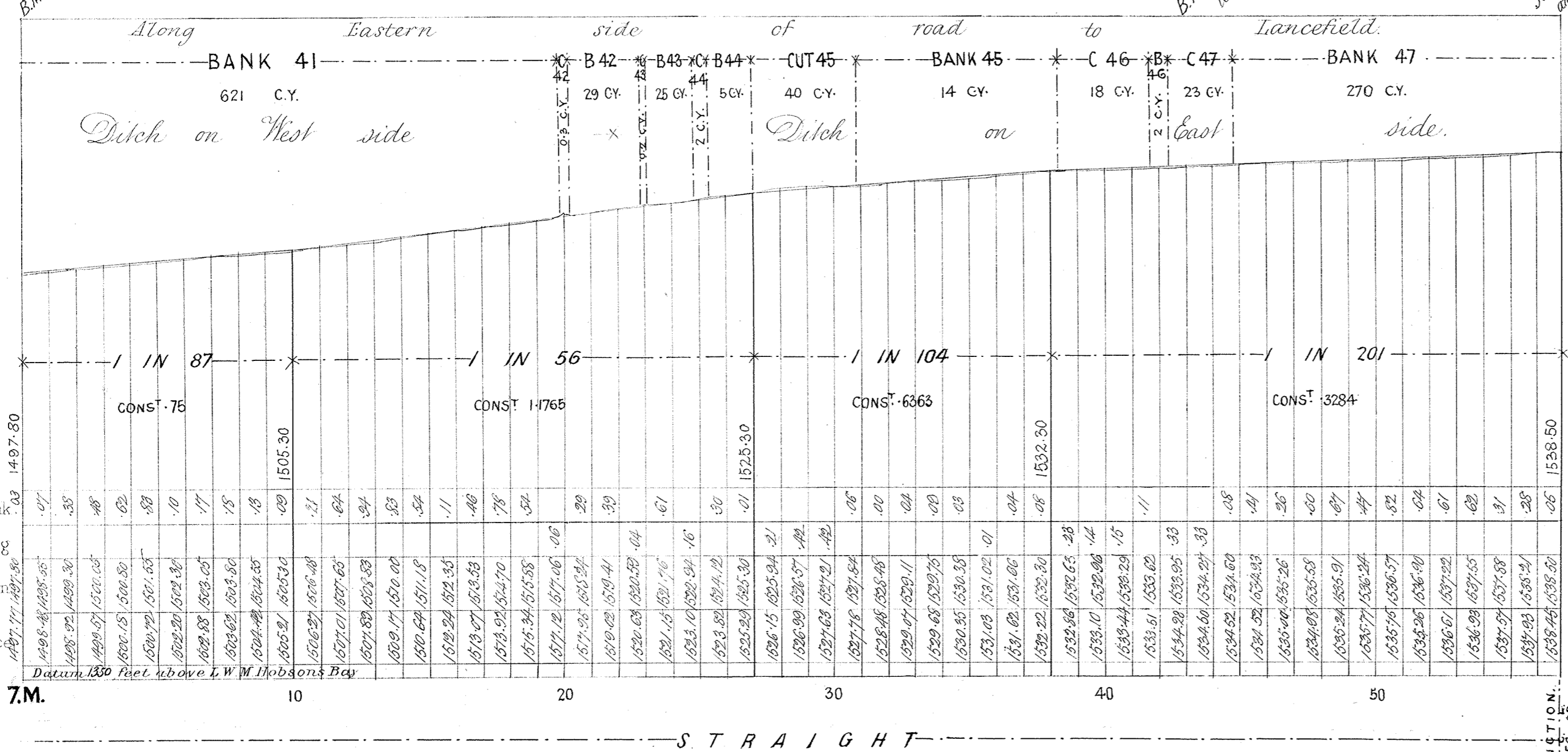
OC. CROSSING 13.6 GATES.

Ditch 3 OPES 6 FT B.M. No. 41 on tree 407. Right of 6.79.80-1497.90 1/2

B.M. No. 40 on tree 401. Right of 6.79.80-1497.90 1/2

B.M. No. 41 on stump 200. Left of 7.43.00-1534.56 1/2

Junction of Messrs McHardy's and Dancer's Surveys at 1.56.88. B.M. No. 42 on post near road. Force, right of line, 1540.44. 1/2



JUNCTION: 7.56.88

VICTORIAN RAILWAYS, LANCEFIELD LINE

**CONTRACT N^o 1321.
N^o 5.**

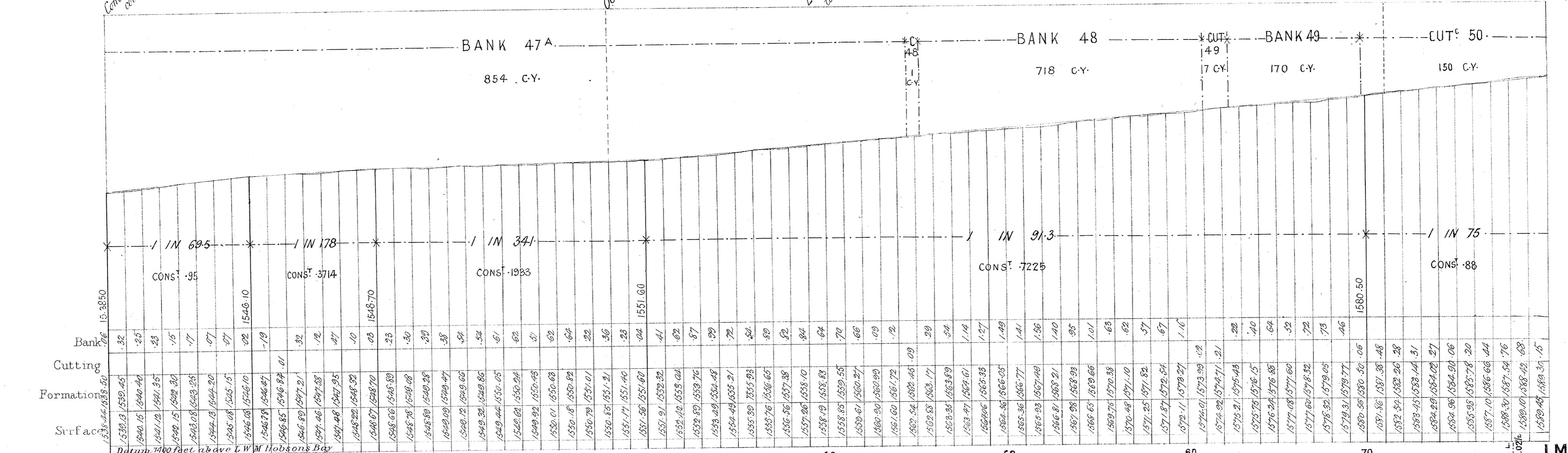
HORIZONTAL, 4 CHAINS TO AN INCH.
VERTICAL, 40 FEET TO AN INCH.

B.M. A on post 1041, to right
of O.C.O. = 1540.14 ft.
Commencement of Mr. Davies Section
terminating with 7.56.88 on Mr. McIndosh's Section.

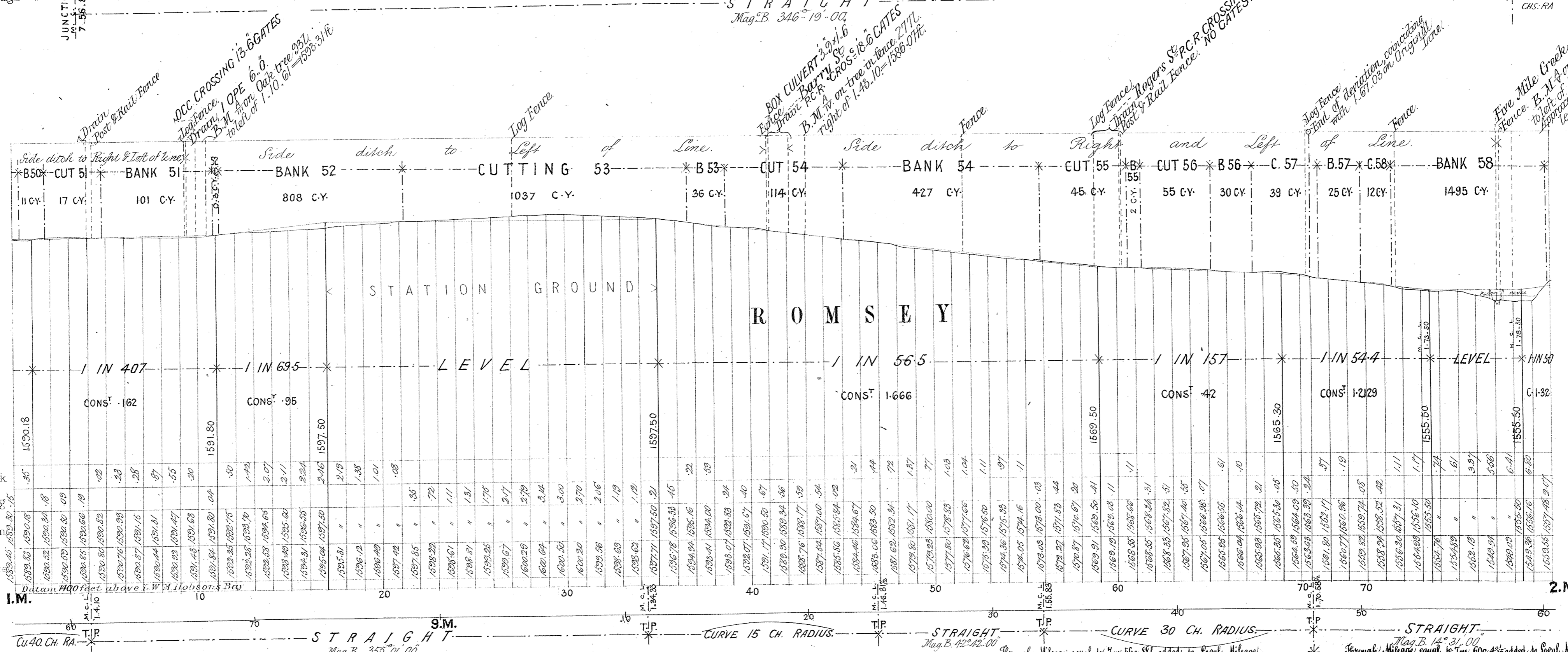
OCC. CROSSING 13.6 GATES.

B.M. A on dead tree 1441,
to right of O.C.O. = 1558.71 ft.

OCC. CROSSING 13.6 GATES.



Local Mileage **O.M.** Through **JUNCTION 7.56.88** 60 **8.M.** 70 10 20 30 40 50 60 70 80 **I.M.**



Local Mileage **I.M.** Through **Cu. 40 Ch. RA.** **T.P.** **STRAIGHT** Mag. B. 355.01.00 **9.M.** **T.P.** **CURVE 15 CH. RADIUS.** **STRAIGHT** Mag. B. 42.42.00 **30** **T.P.** **CURVE 30 CH. RADIUS.** **STRAIGHT** Mag. B. 14.31.00 **40** **T.P.** **STRAIGHT** Mag. B. 14.31.00 **50** **T.P.** **STRAIGHT** Mag. B. 14.31.00 **60** **T.P.** **STRAIGHT** Mag. B. 14.31.00 **70** **T.P.** **STRAIGHT** Mag. B. 14.31.00 **80** **2.M.**

Drain Foot & Rail Fence
OCC. CROSSING 13.6 GATES
Drain
B.M. A on tree 2371,
to left of 1.70.61 = 1535.31 ft.

BOX CULVERT 3.9 x 1.6
BARRY ST
OCC. CROSSING 13.6 GATES
B.M. A on tree in fence 2771,
to right of 1.48.10 = 1536.07 ft.

Log Fence
Drain Rogers St
OCC. CROSSING 13.6 GATES
No Gates.

Log Fence
End of operation commencing
with 1.67.05 on Original
Line.

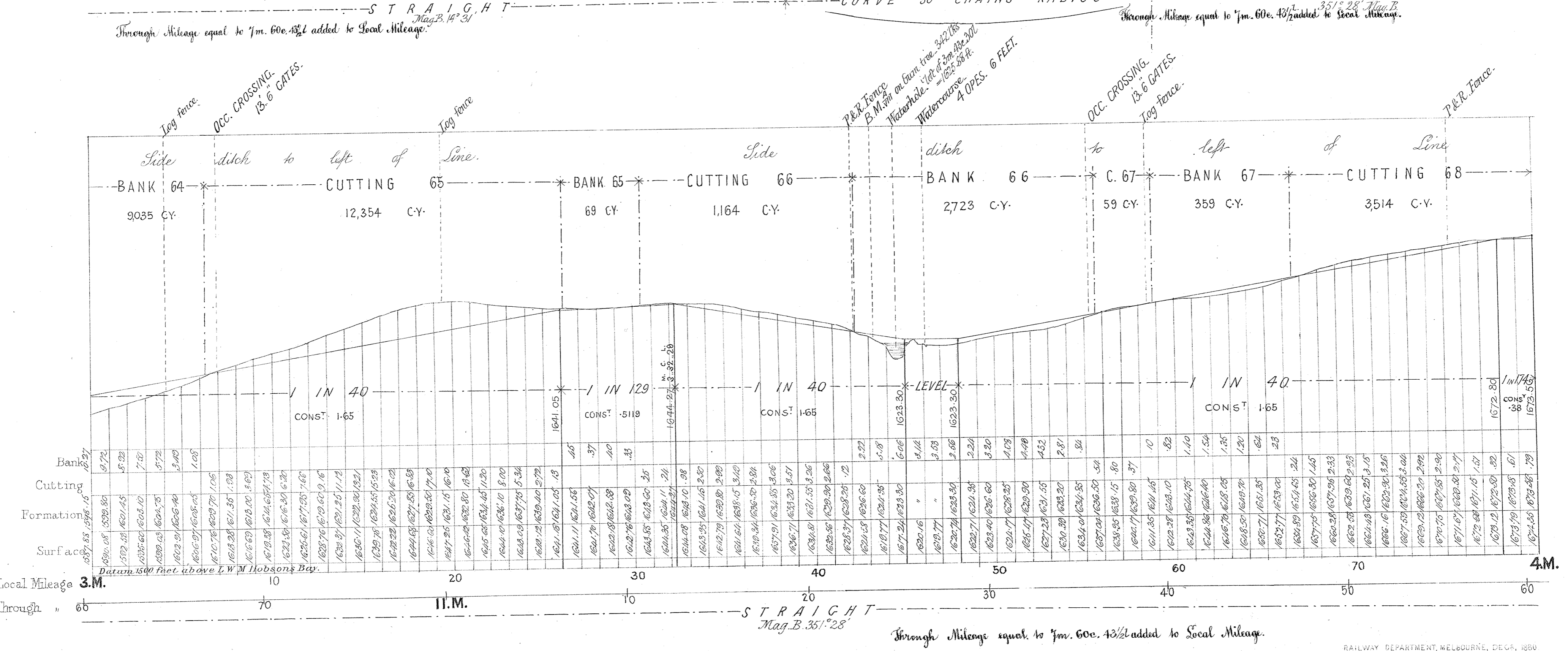
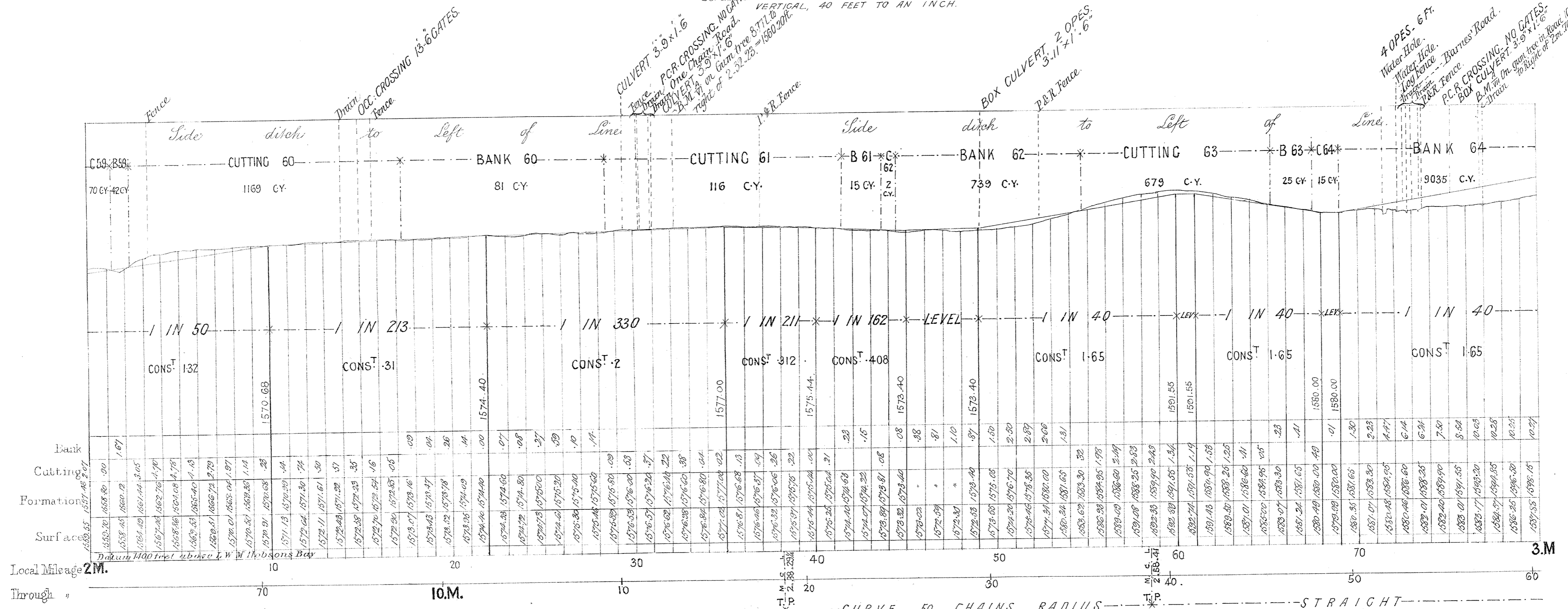
Five Mile Creek 5 OPES 10.0
B.M. A on Box tree 1521,
to left of 1.71.95 = 1552.24 ft.
Approximate highest level
= 1551.74 ft.

VICTORIAN RAILWAYS, LANCEFIELD LINE

CONTRACT N^o 1321.

N^o 6.

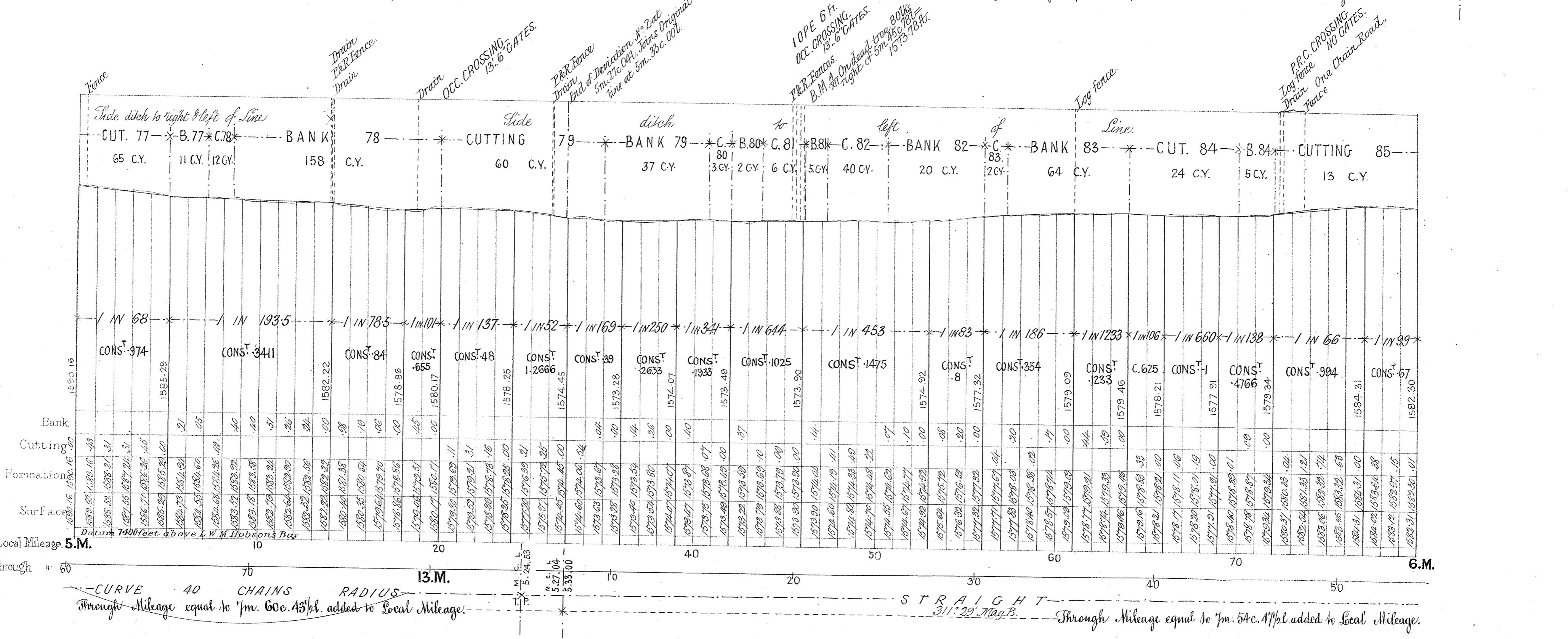
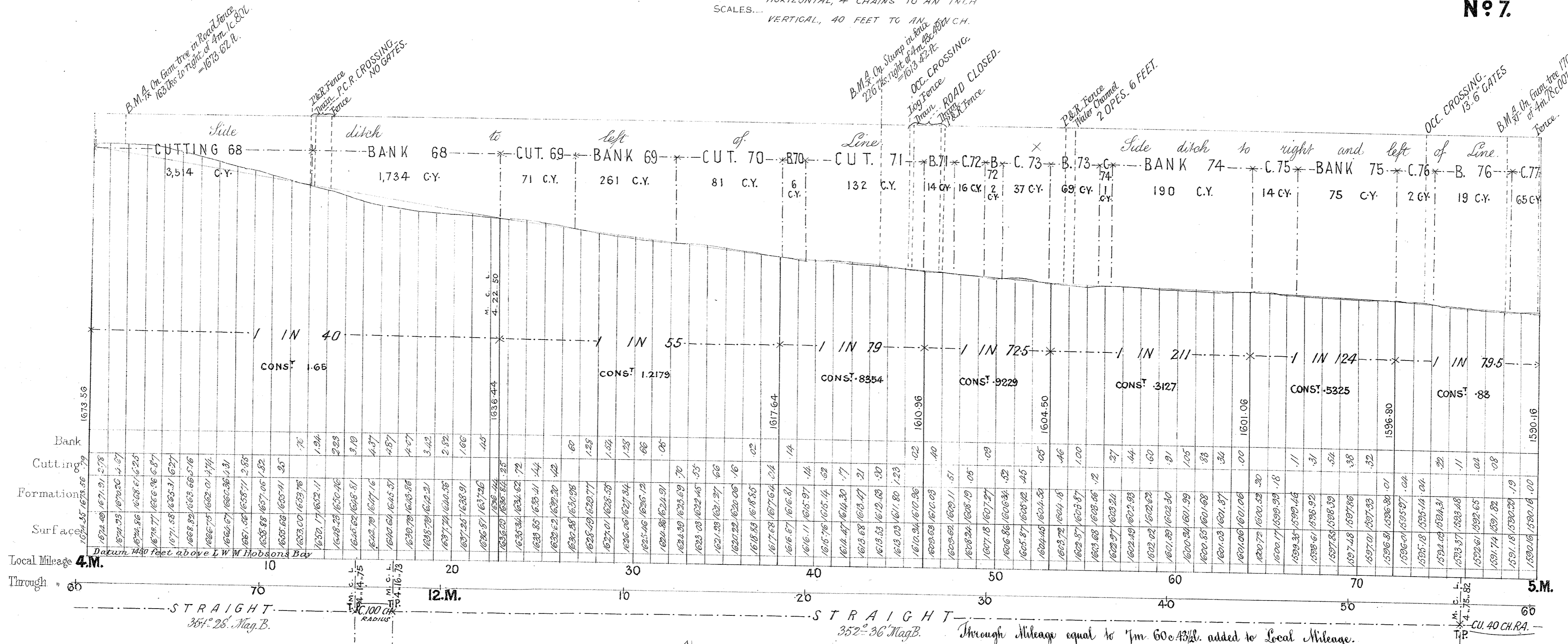
SCALE: HORIZONTAL, 4 CHAINS TO AN INCH.
VERTICAL, 40 FEET TO AN INCH.



VICTORIAN RAILWAYS, LANCEFIELD LINE

**CONTRACT N^o 1321.
N^o 7.**

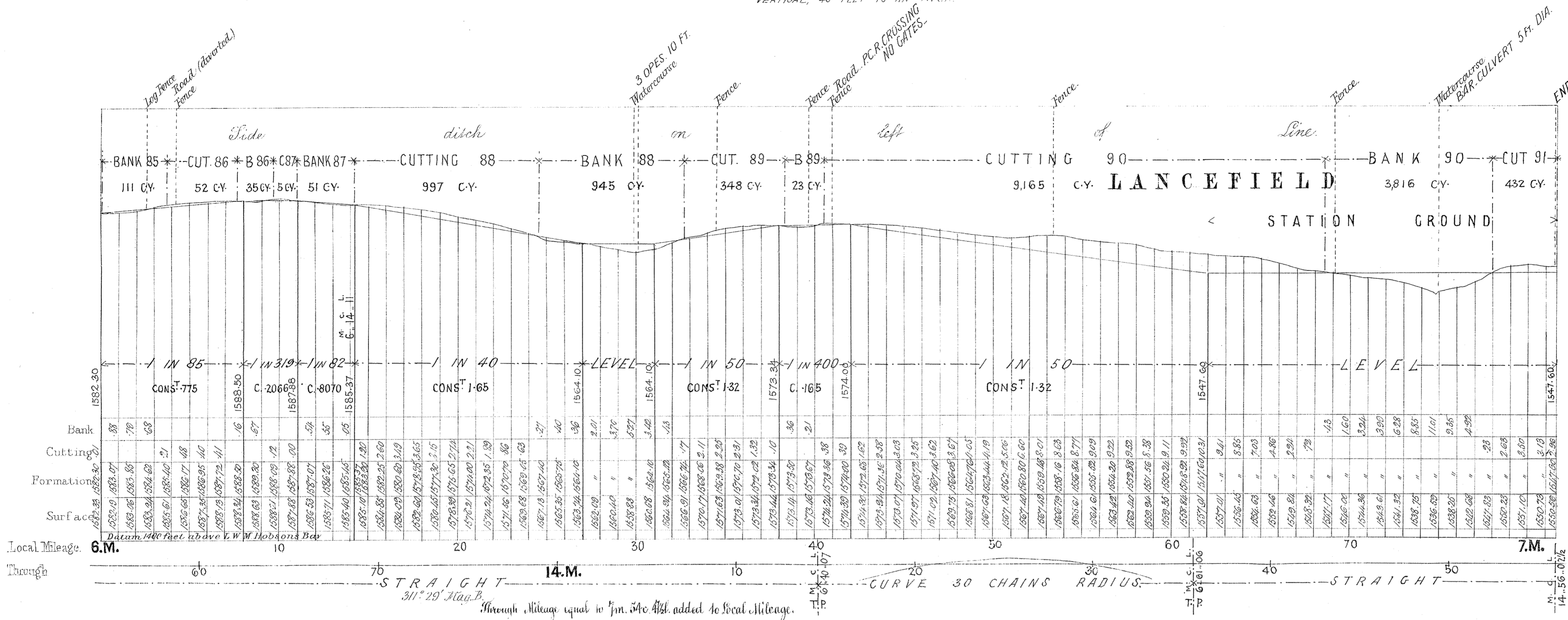
HORIZONTAL, 4 CHAINS TO AN INCH
VERTICAL, 40 FEET TO AN INCH



VICTORIAN RAILWAYS, LANCEFIELD LINE

**CONTRACT N° 1321.
N° 8.**

HORIZONTAL, 4 CHAINS TO AN INCH.
SCALES... VERTICAL, 40 FEET TO AN INCH.



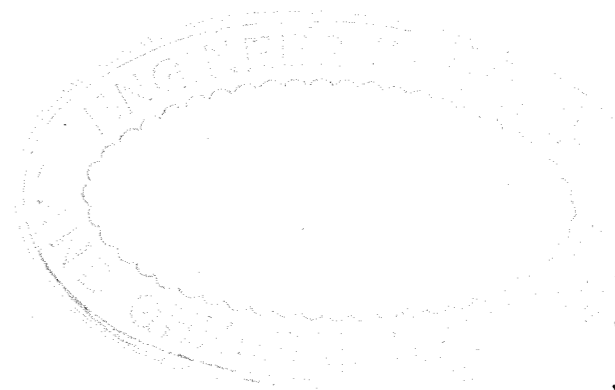
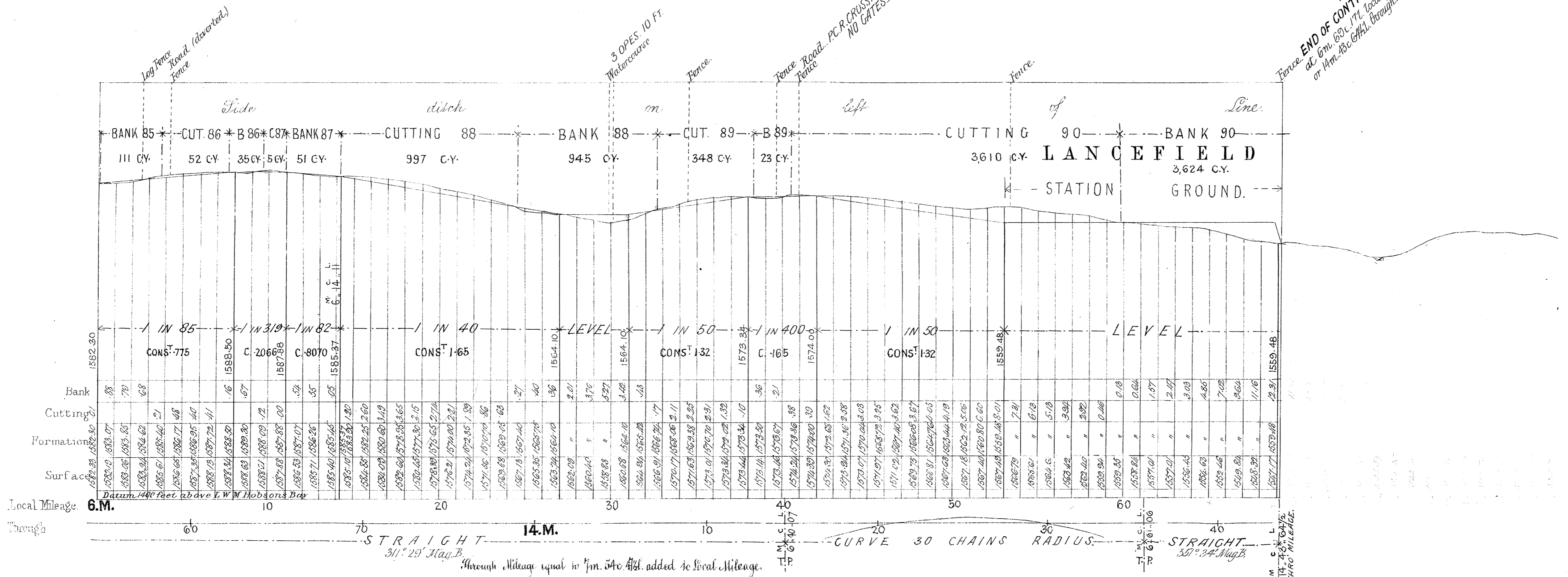
END OF CONTRACT 1321
at 7m. 1c. 55. Local Mileage,
or 7m. 56c. 0.2 through

VICTORIAN RAILWAYS, LANCEFIELD LINE

CONTRACT N^o 1321.

HORIZONTAL, 4 CHAINS TO AN INCH.
VERTICAL, 40 FEET TO AN INCH.

END OF CONTRACT 1321.
at 6m. 63c. 17. Local Mileage.
or 14m. 43c. 44.1. Through Mileage.
N^o 8A



J.P.H.
19/12/01