

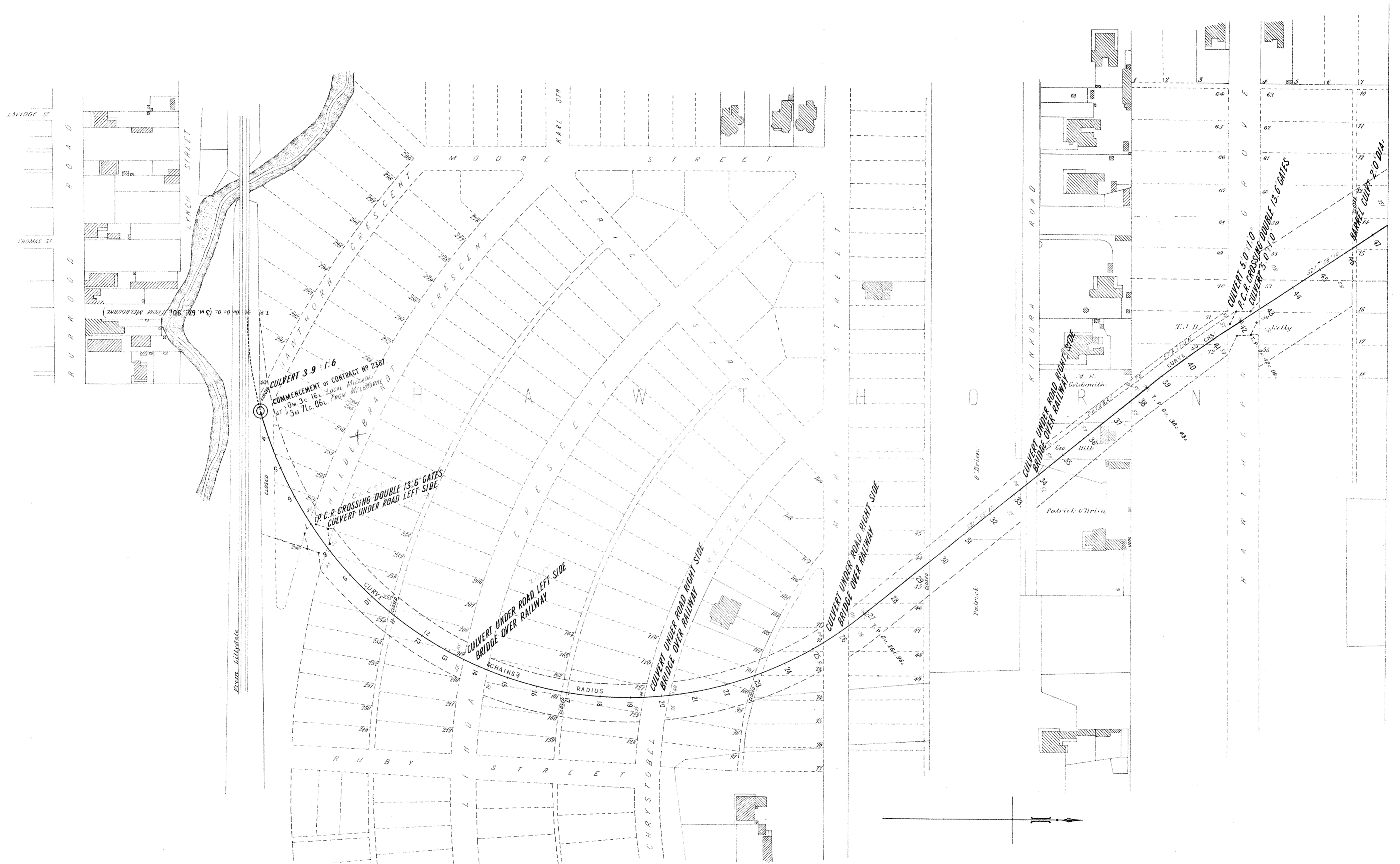
VICTORIAN RAILWAYS.

HAWTHORN AND KEW LINE.

SCALE. 2 CHAINS TO AN INCH.

CONTRACT N^o 2387.

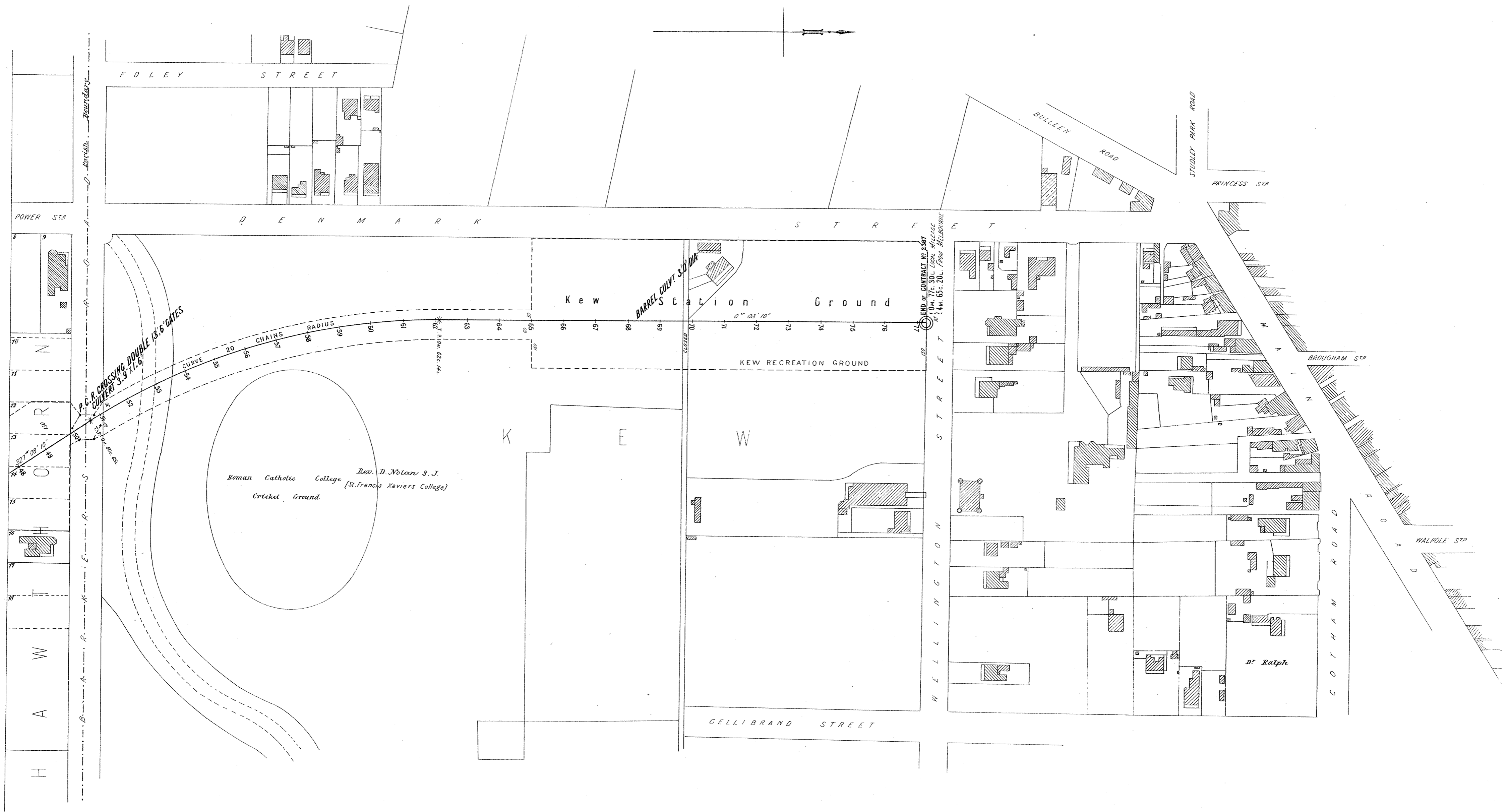
N^o 1.

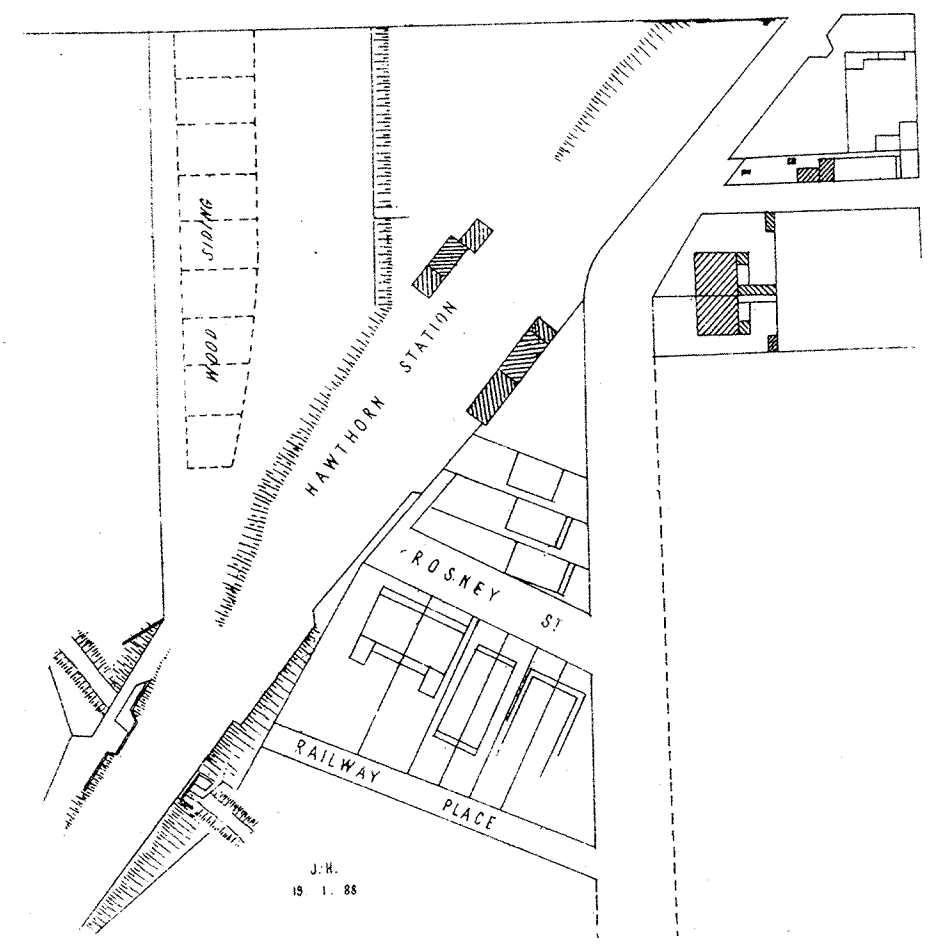
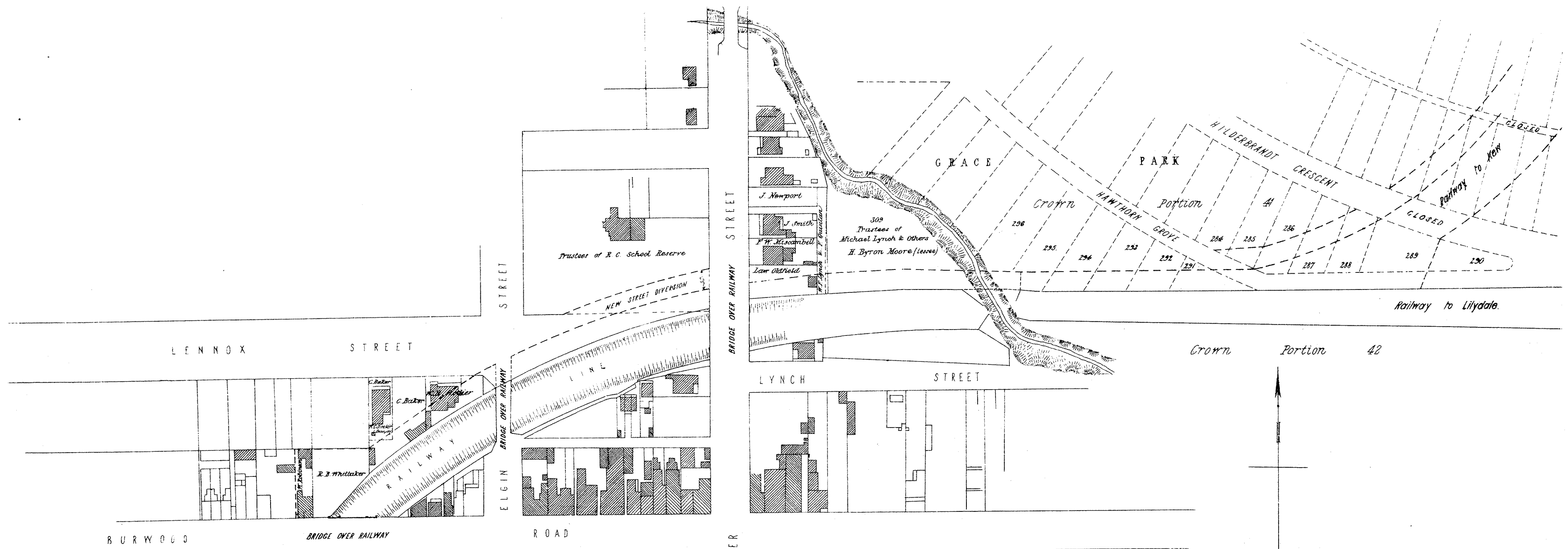


VICTORIAN RAILWAYS, HAWTHORN AND KEW LINE.

SCALE. 2 CHAINS TO AN INCH.

CONTRACT N^o 2387.
N^o 2.





VICTORIAN RAILWAYS,
 HAWTHORN AND KEW LINE
 Plan of Land

①
 Reference Number

Belonging to Occupied by
 Situated in the Parish of Boroondara in the County of Bourke

Scale 2 Chains to 1 Inch.

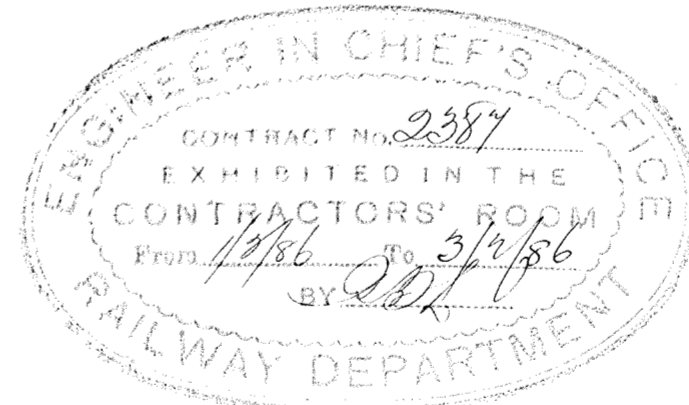
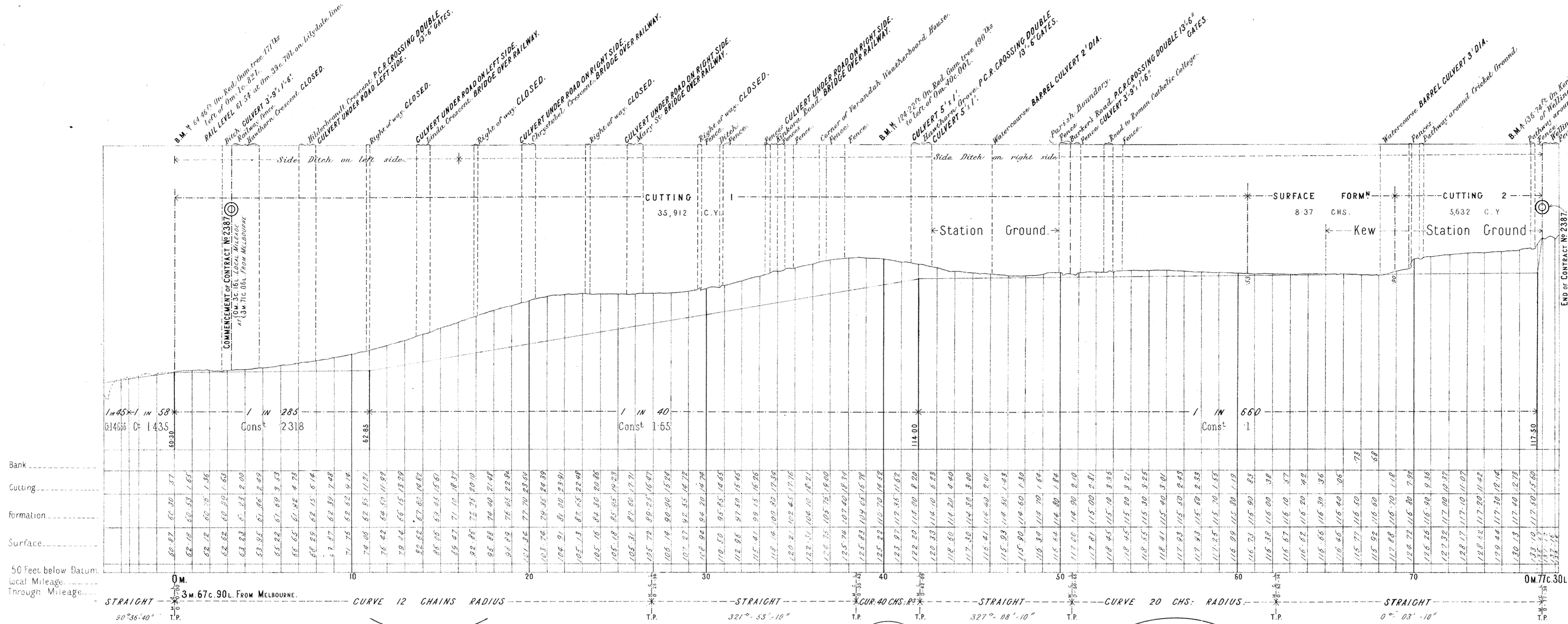
Quantity of Land required and colored red ^{A. R. R.} more or less.

VICTORIAN RAILWAYS.

HAWTHORN AND KEW LINE.

CONTRACT N^o 2387

SCALES { HORIZONTAL 4 CHAINS TO AN INCH.
VERTICAL 40 FEET TO AN INCH.



VICTORIAN RAILWAYS.

HAWTHORN AND KEW LINE.

SCALES (HORIZONTAL 4 CHAINS TO AN INCH.
VERTICAL 40 FEET TO AN INCH.)

CONTRACT N^o 2387

