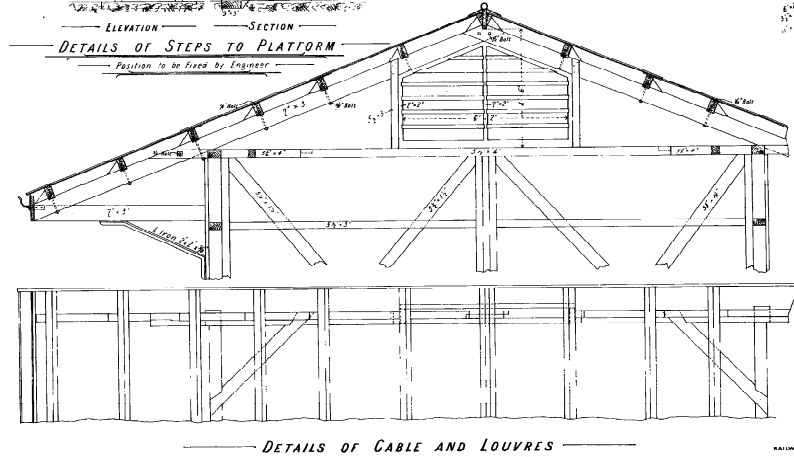
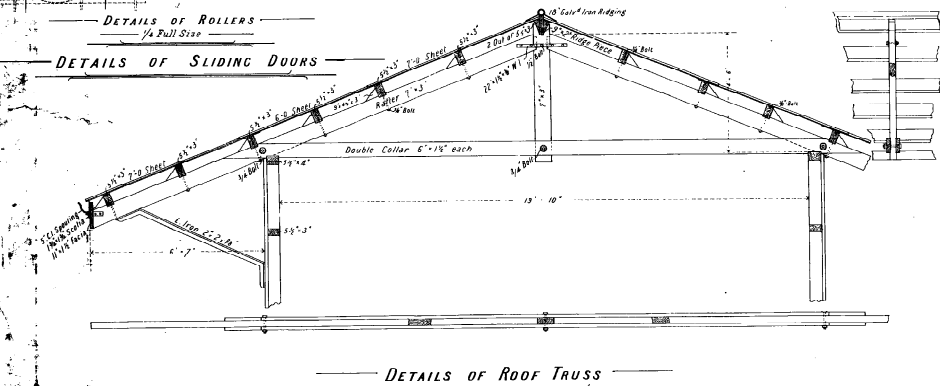
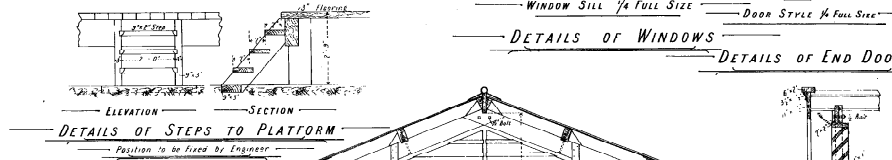
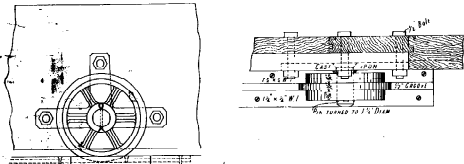
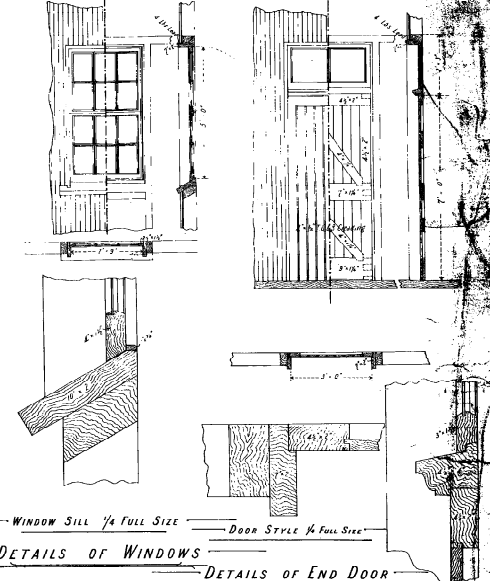
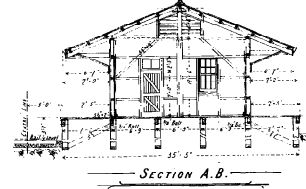
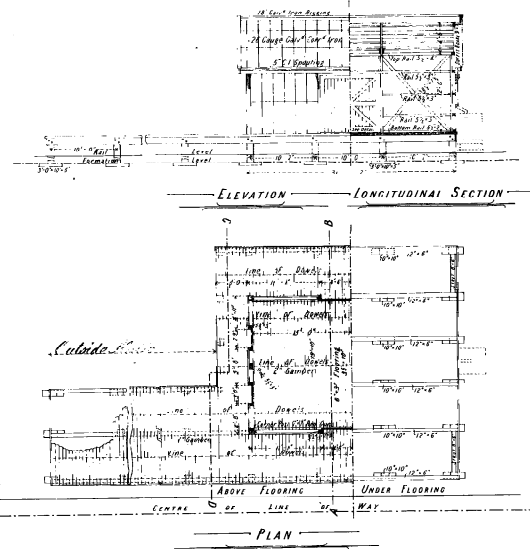
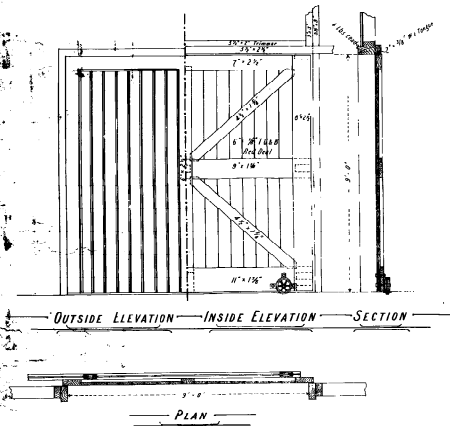


GOODS SHED 30'x20'

Scale 6 feet to an inch
Scale of Details 2 feet to an inch

VICTORIAN RAILWAYS, *Ringwood to km. sec. Gully* LINE *Upper km. sec. Gully* Station

CONTRACT N^o 1301
1877



Approved for construction of the above referred to by the
 Chief Engineer of the Victorian Railways
 Date 25th of January 1877
 Engineer in Charge
 J. M. H. [Signature]
 Date 11/1/77

RAILWAY DEPARTMENT, MELBOURNE JULY 1877

13-1-77