

VICTORIAN RAILWAYS,

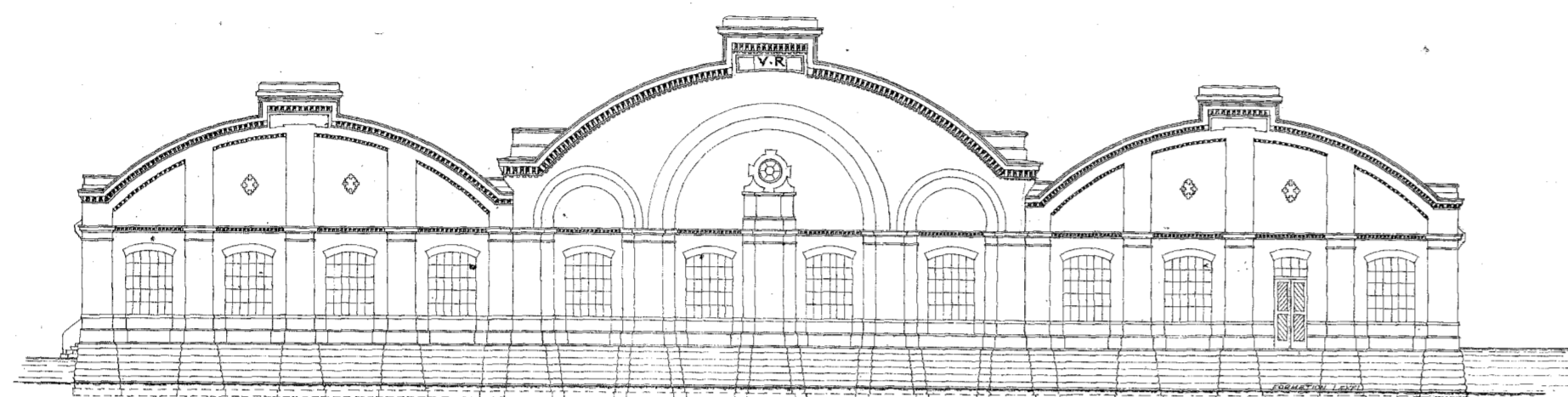
—ENGINE SHED AT SANDHURST—

—Plan, Elevations and Sections—

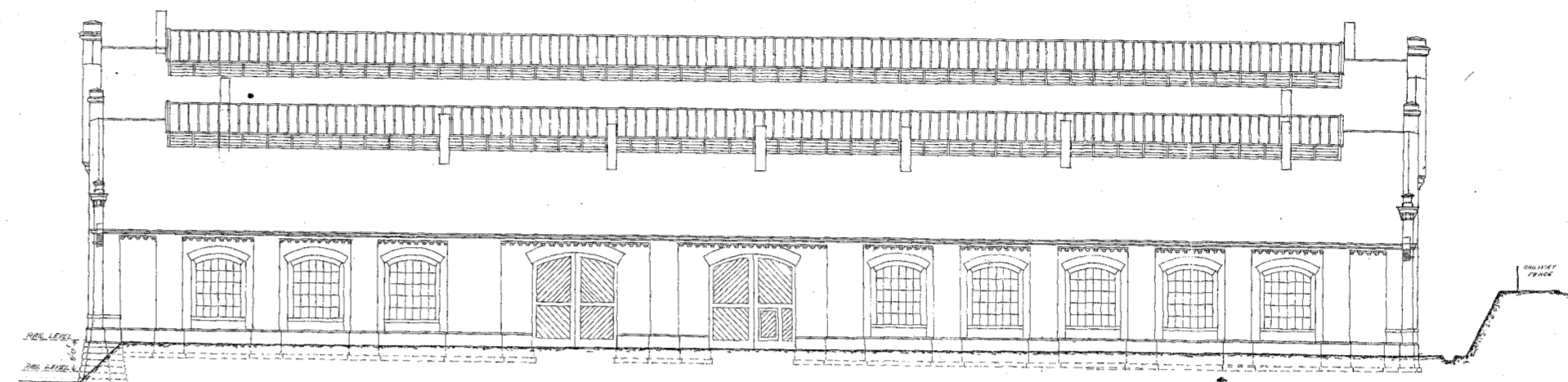
—Scale 1/16" = 1' 0"—

CONTRACT N° 3305

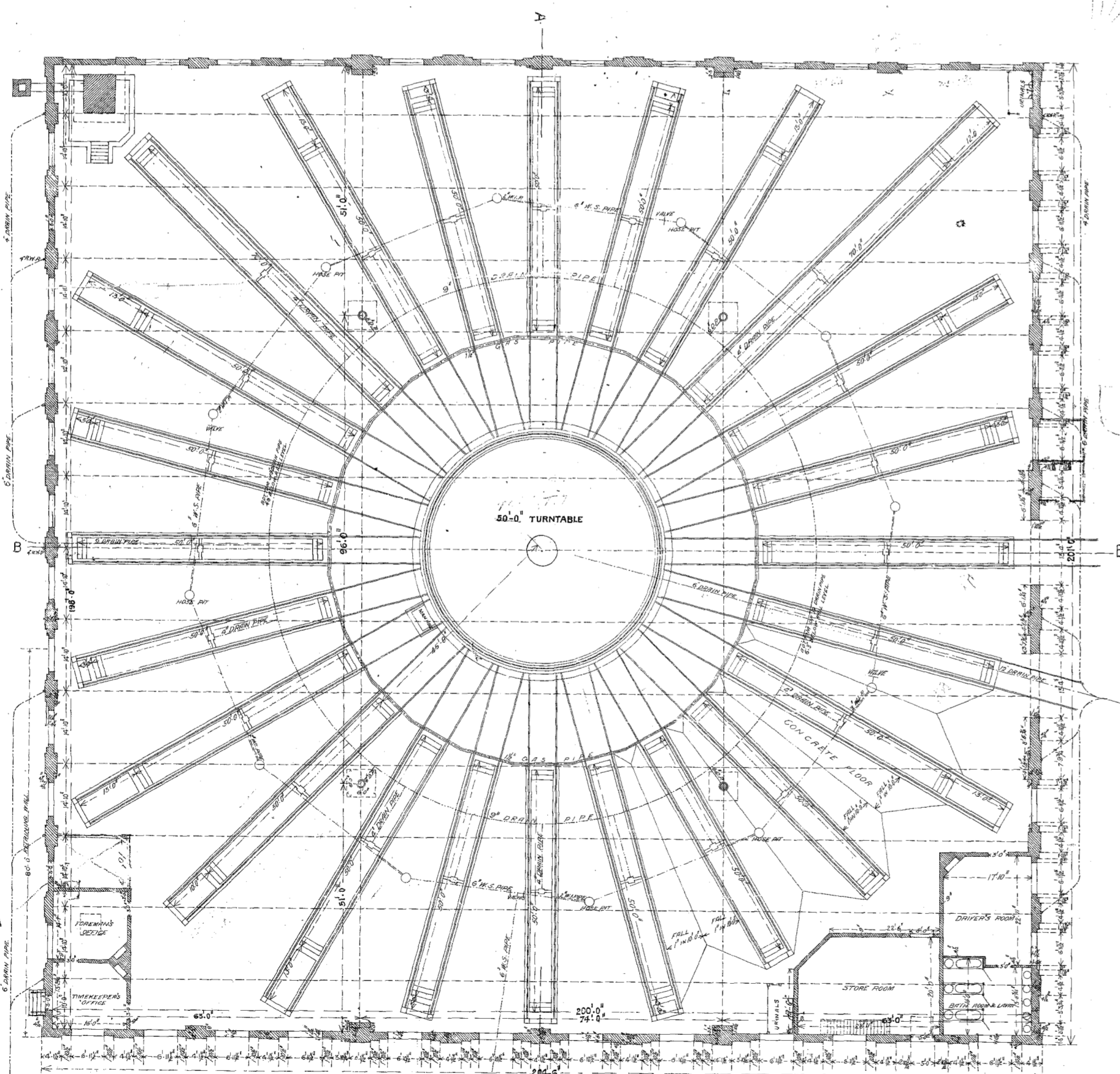
N° 2



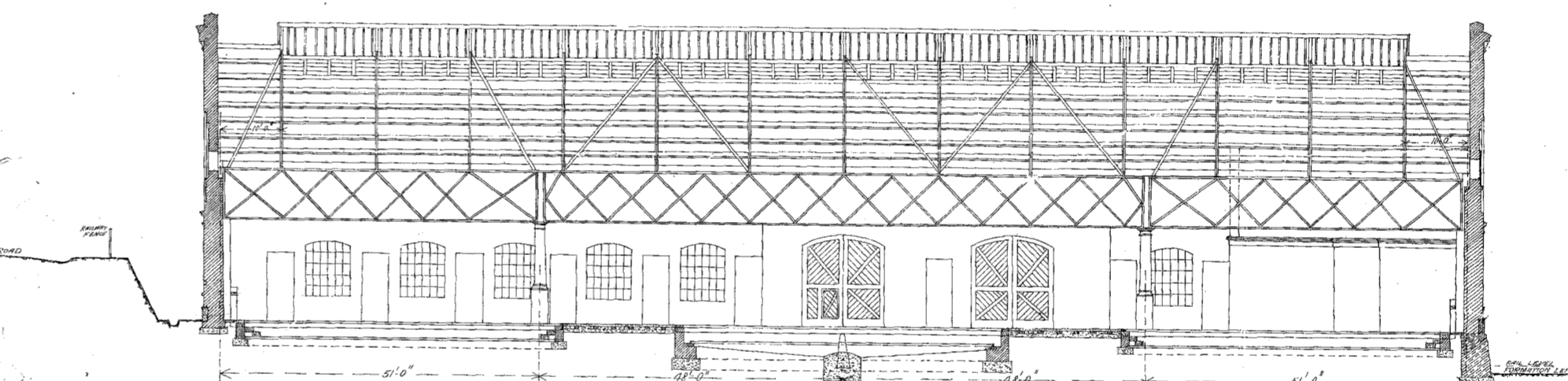
—ELEVATION OF WEST SIDE—



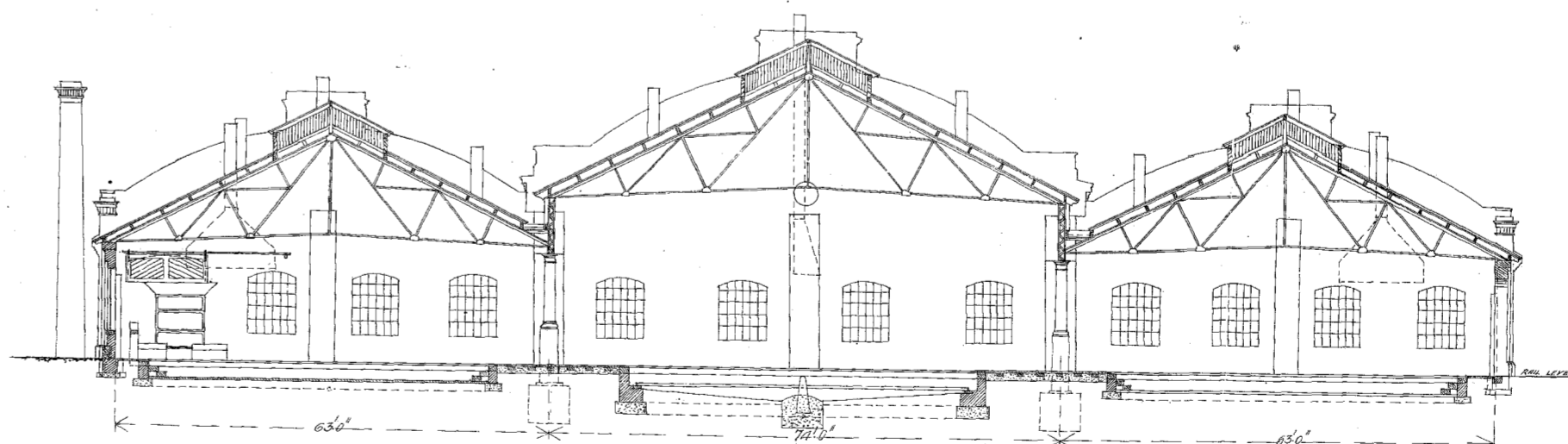
—ELEVATION OF SOUTH SIDE—



—PLAN—



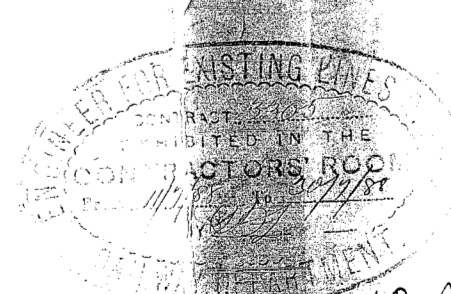
—SECTION A.A.—



—SECTION B.B.—

RAILWAY DEPARTMENT, MELBOURNE, JUNE 1855

Approved as correct of the Drawings referred to in the Specification of the above work, and signed by me as Engineer in Charge of the Sandhurst Railway, on the 30th day of July 1855.
S. Macdonald



RECORD COPY
(PLAN ROOM)