

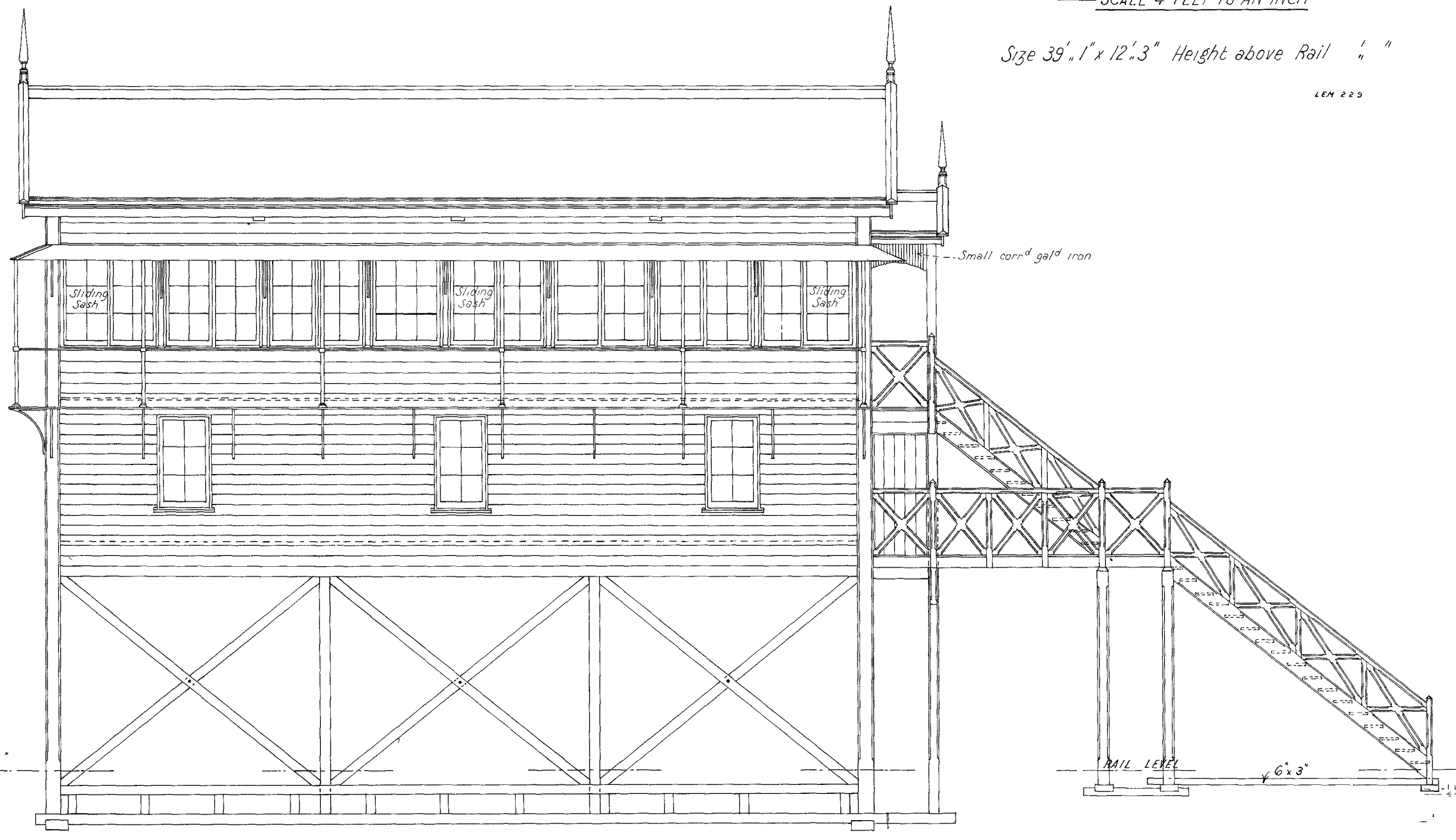
21160  
28 5 39  
B. 1.3

— VICTORIAN RAILWAYS, —  
— SIGNAL BOX AT ESSENDON —

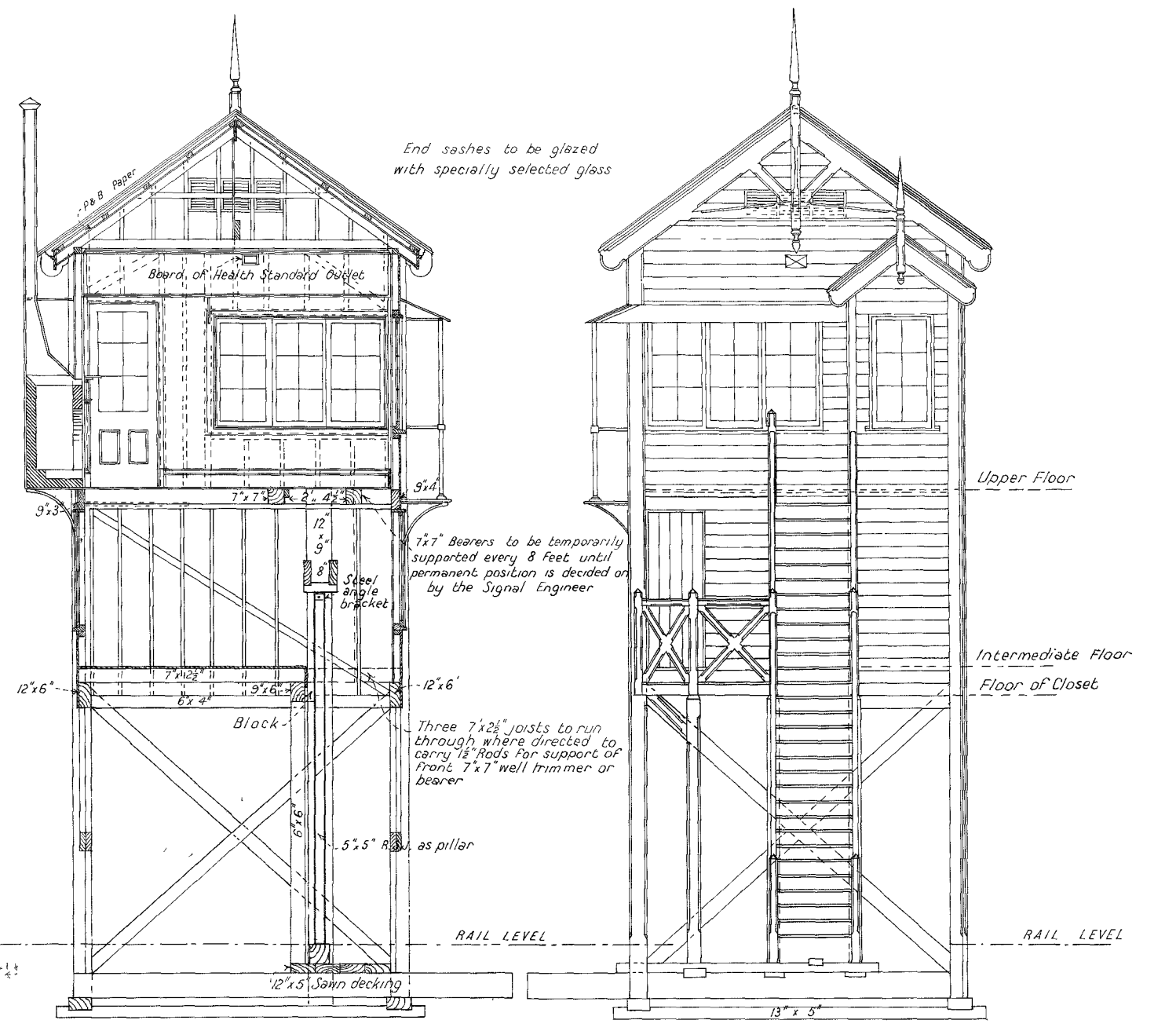
— SCALE 4 FEET TO AN INCH —

Size 39'.1" x 12'.3" Height above Rail " "

LEM 229



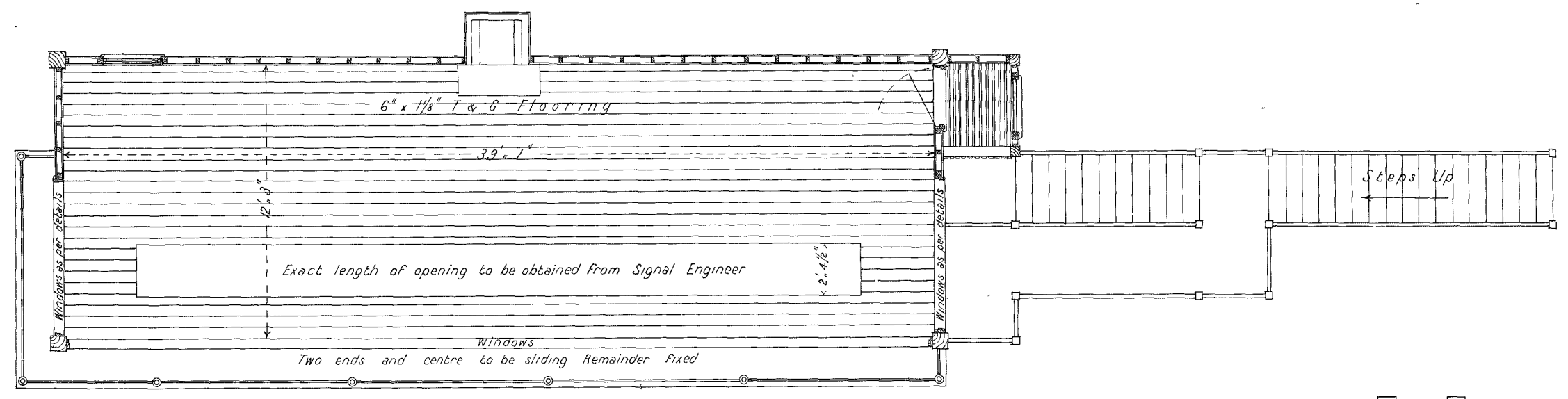
— FRONT ELEVATION —



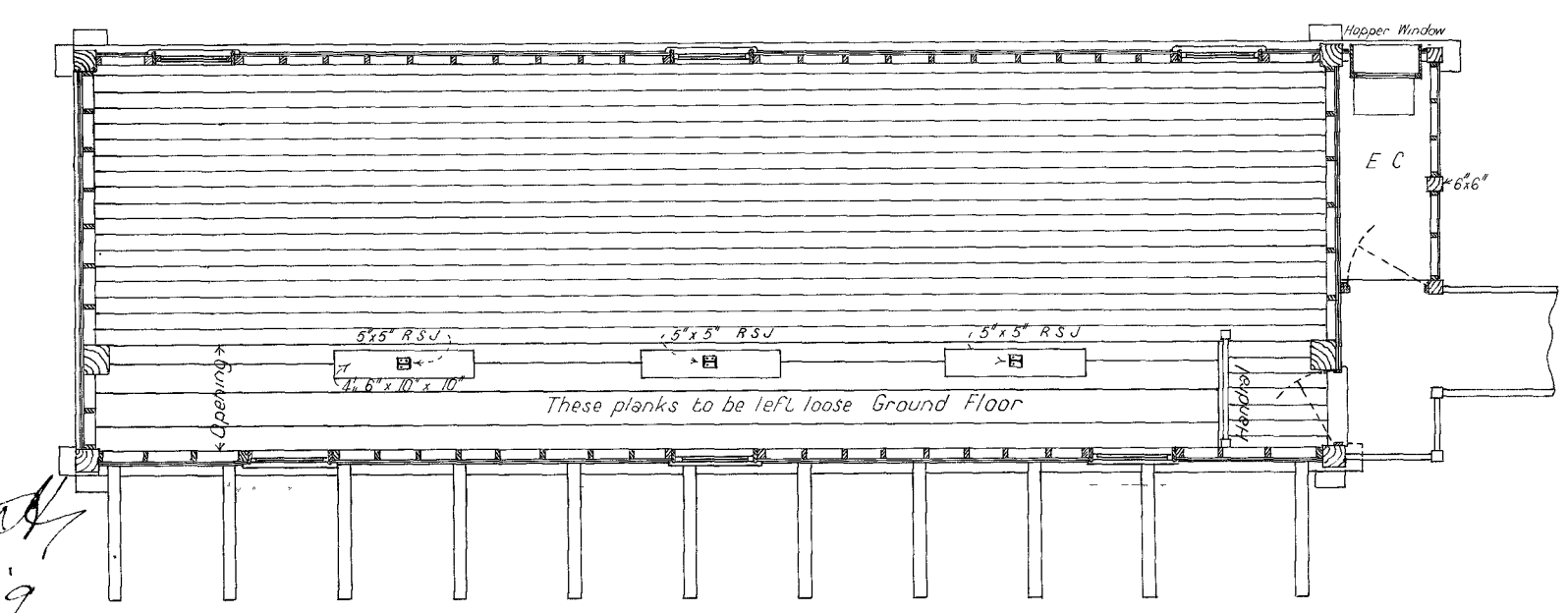
— CROSS SECTION —

— END ELEVATION —

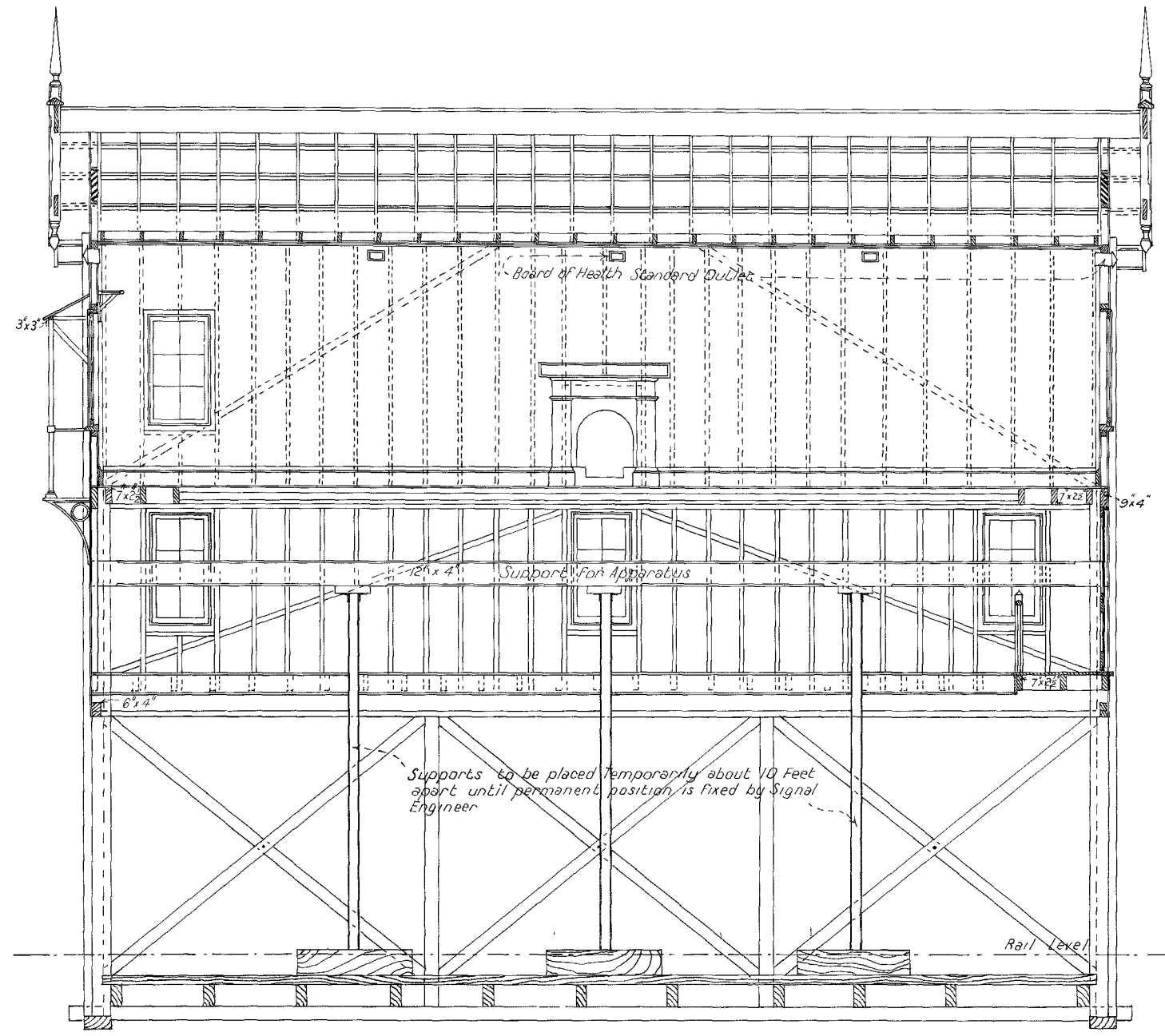
Note - Studs to be spaced so that one will come directly under iron brackets  
All Ltimbers in contact with ground to be of Red Gum or Jarrah.



UPPER FLOOR PLAN



— INTERMEDIATE FLOOR PLAN —



— LONGITUDINAL SECTION —

2.2.9

18.3.9  
173.09