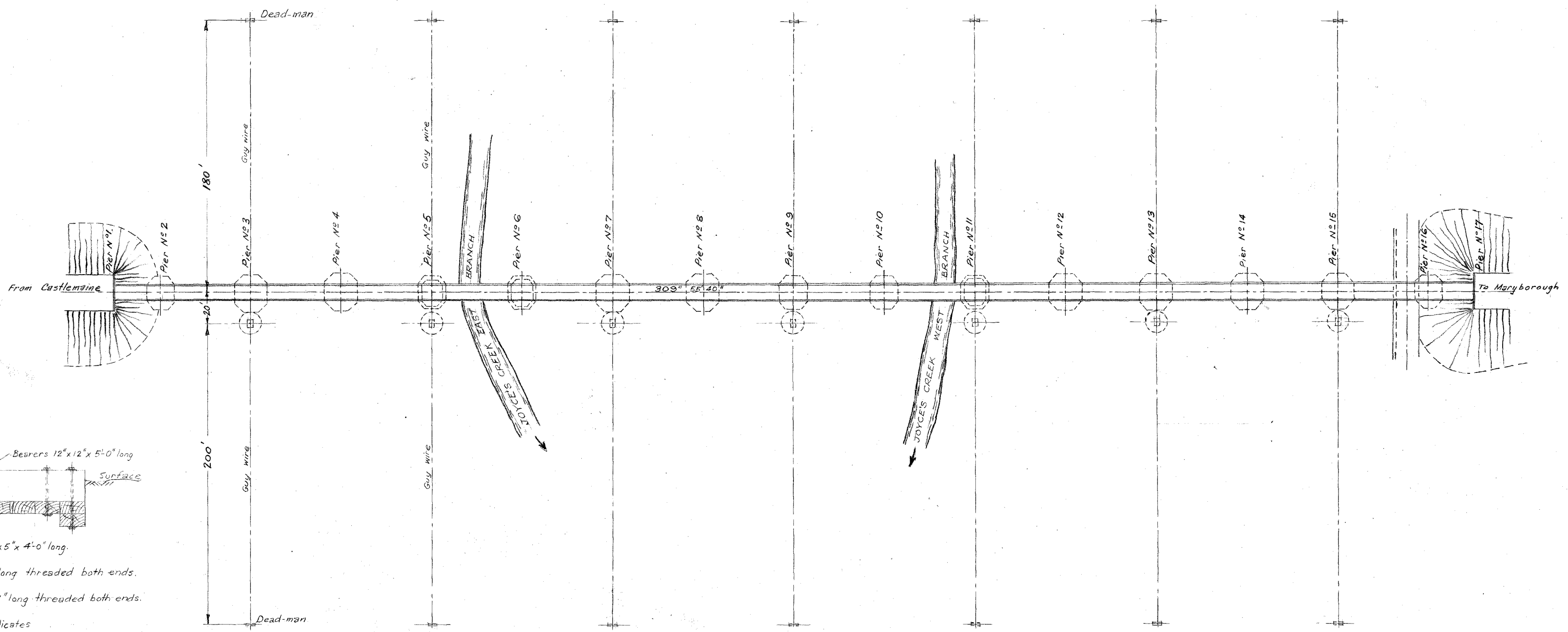
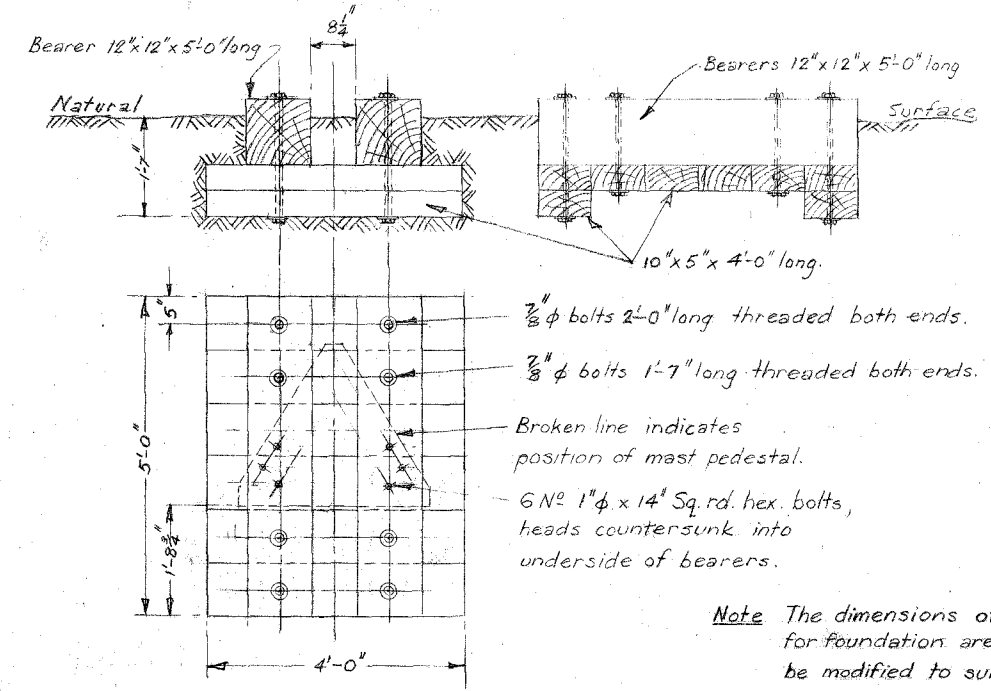
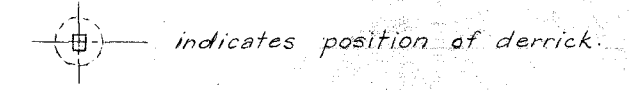


BOARD OF LANDS & WORKS  
RAILWAY CONSTRUCTION BRANCH



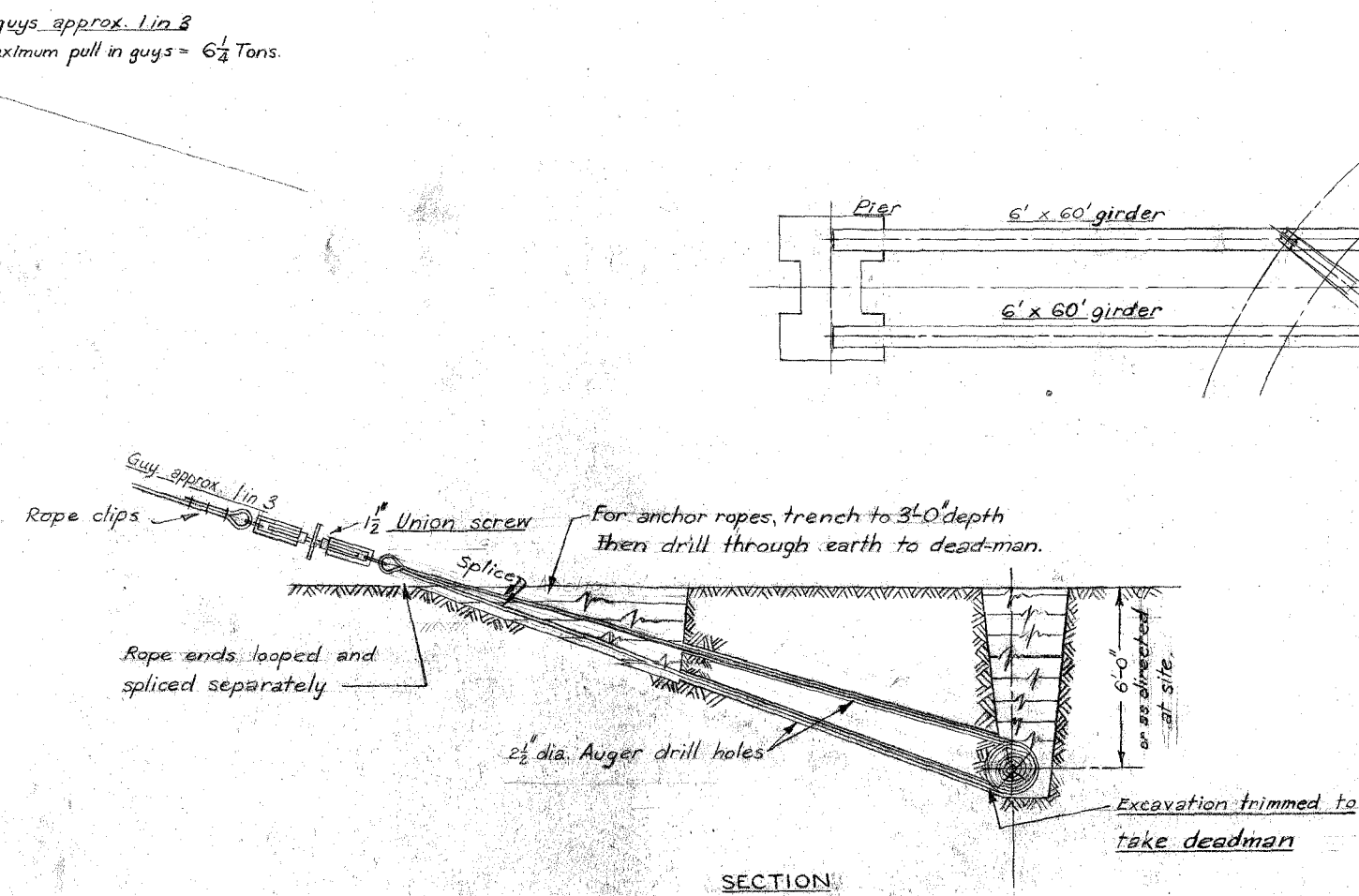
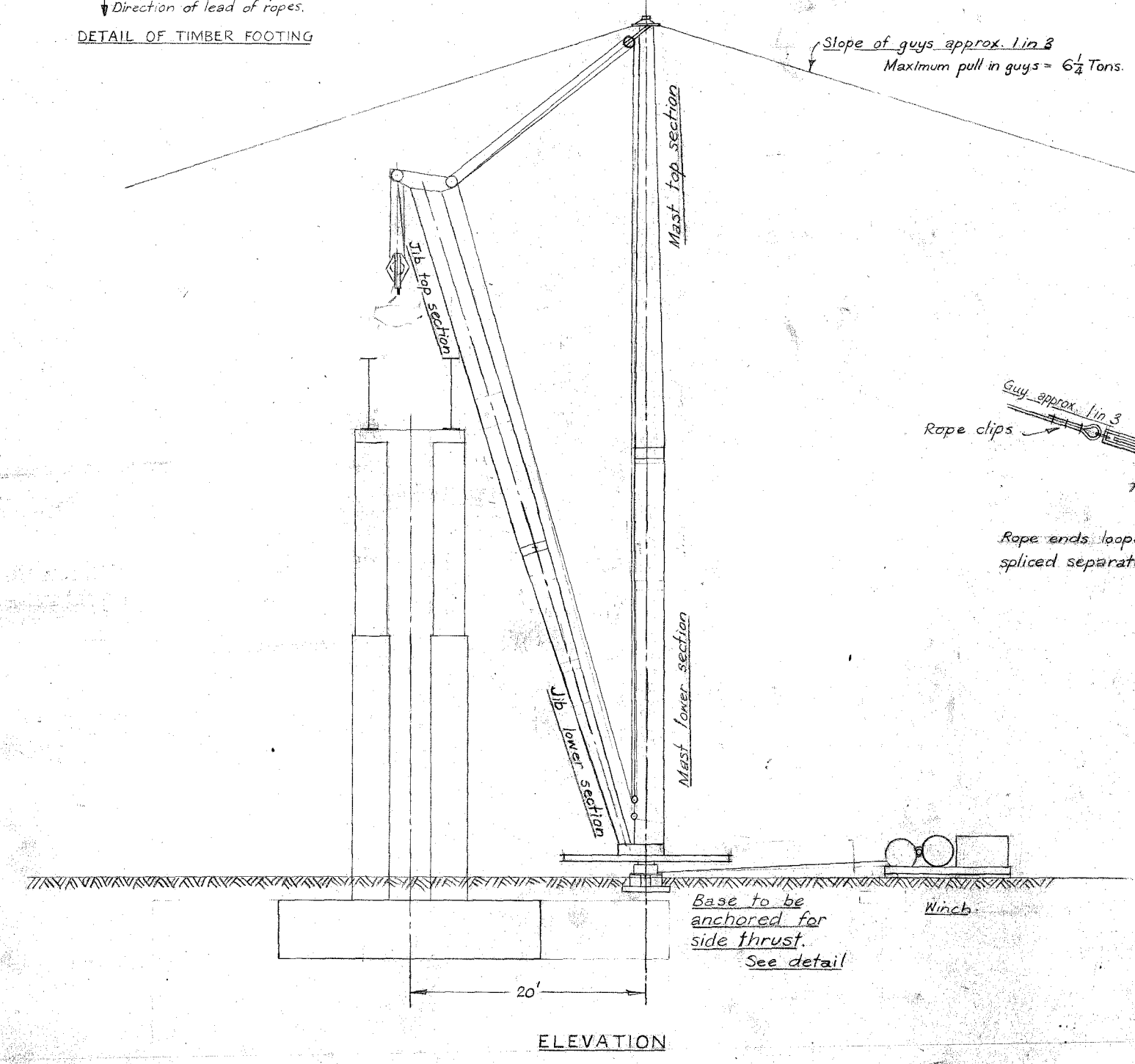
PLAN  
SHOWING POSITION FOR ERECTING GUY DERRICK  
AND LOCATION OF DEAD-MEN  
Scale 1" = 40'-0"

Note:-



Note The dimensions of timber and bolts for foundation are tentative, and may be modified to suit materials available.

Direction of lead of ropes.  
DETAIL OF TIMBER FOOTING



SECTION

DETAIL OF DEADMAN

CASTLEMARINE TO MARYBOROUGH  
 DEVIATION AT JOYCE'S CREEK  
 BRIDGE AT JOYCE'S CREEK  
 ERECTION OF GIRDERS

Scales 1" = 40'-0" & 1/2", 1/4" and 1/8" = 1'-0"

Drawn by	G.E.G.	SUPERINTENDING ENGINEER	DRAWING NO. 34 / 4324
Traced by	G.E.G.	asa	
Checked by			