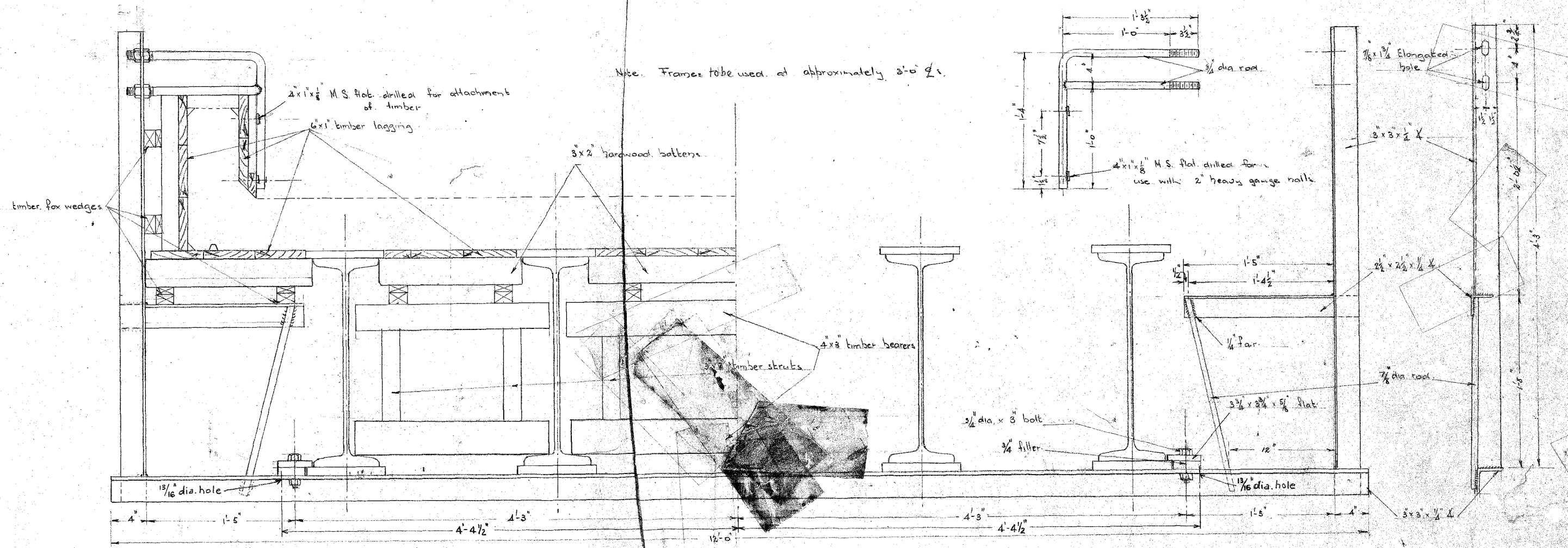


CASTLEMAINE TO MARYBOROUGH
DEVIATION AT JOYCE'S CREEK

SWP
197



Note. Frames to be used at approximately 30° ±.

FORMWORK FOR STANDARD 30'-0" 4 JOIST PLATED I BEAM BRIDGE

Scale 1/2" = 1'-0"

9 FRAMES PER SPAN

30A/4360A

20/1/199