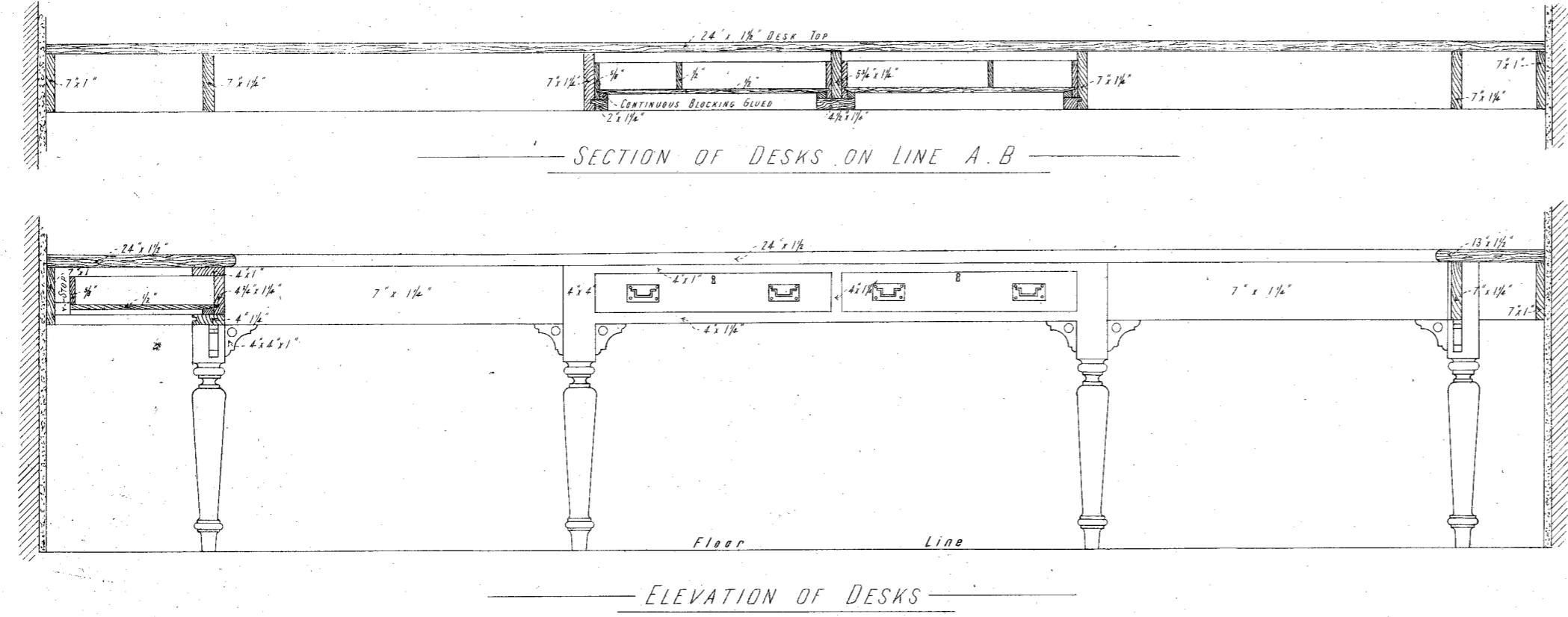


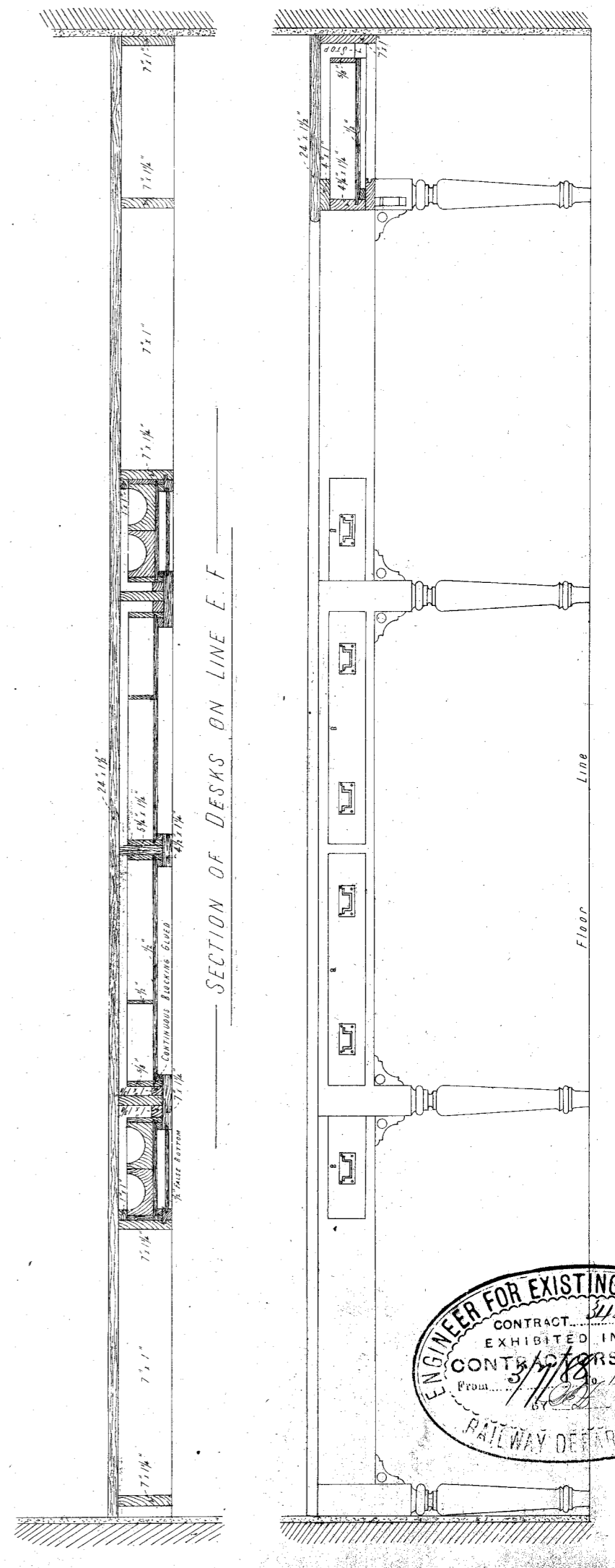
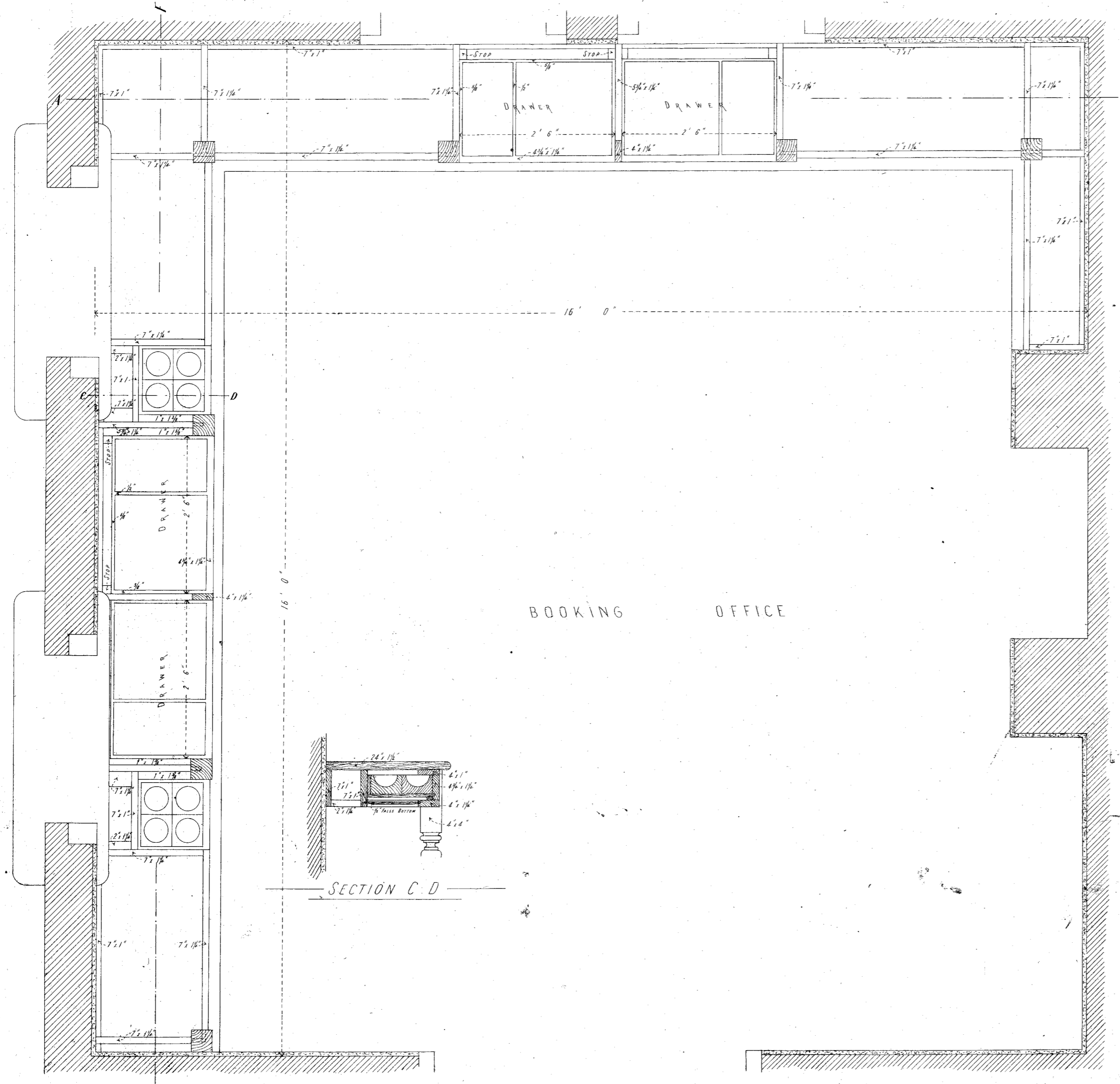
VICTORIAN RAILWAYS,
Melbourne & Coburg LINE
DETAILS OF BOOKING OFFICE FITTINGS FOR *Brunswick*

Scale 1 Inch to a Foot



I accept this as one of the Drawings referred to in the Specification and Conditions upon which... based...
Tender Dated the... 16... day of... July 88.
Signature of Contractor *W. G. Macdonald*
Witness to Signature *J. Macdonald*
Date... 31. 7. 88.

CONTRACT N^o 3422
N^o 8



ENGINEER FOR EXISTING LINES OFFICE
CONTRACT... 3422
EXHIBITED IN THE
CONTRACTORS' ROOM
From... 3/1/88
RAILWAY DEPARTMENT

VICTORIAN RAILWAYS
12
766
JAN 22 1919