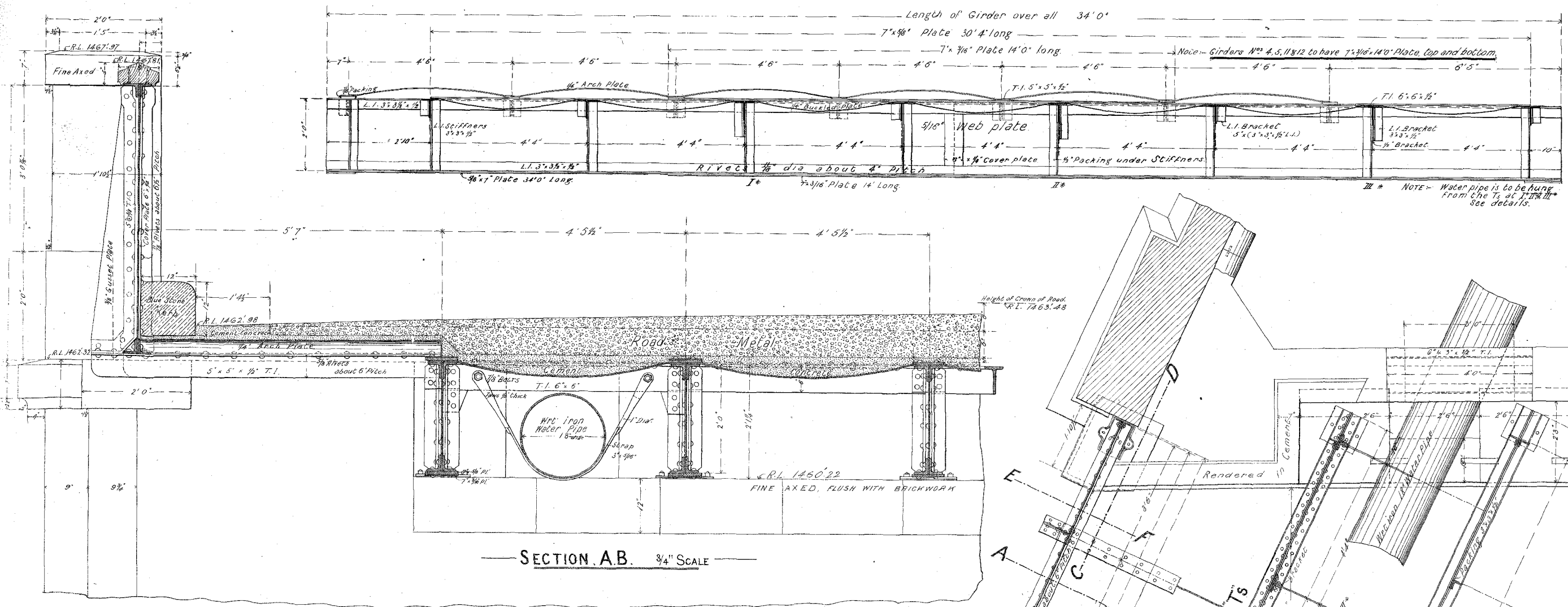


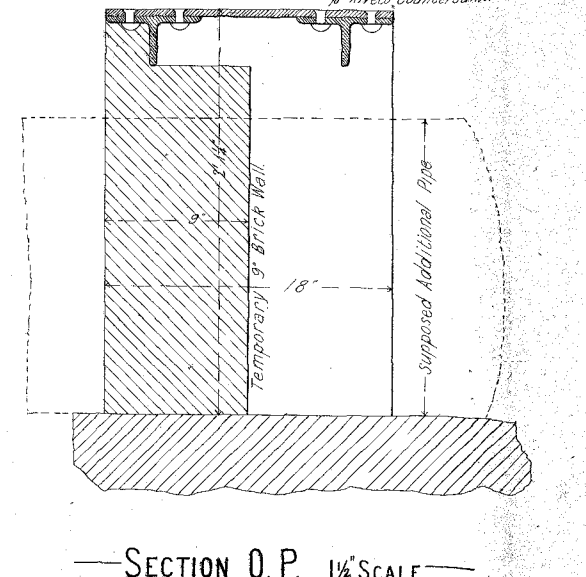
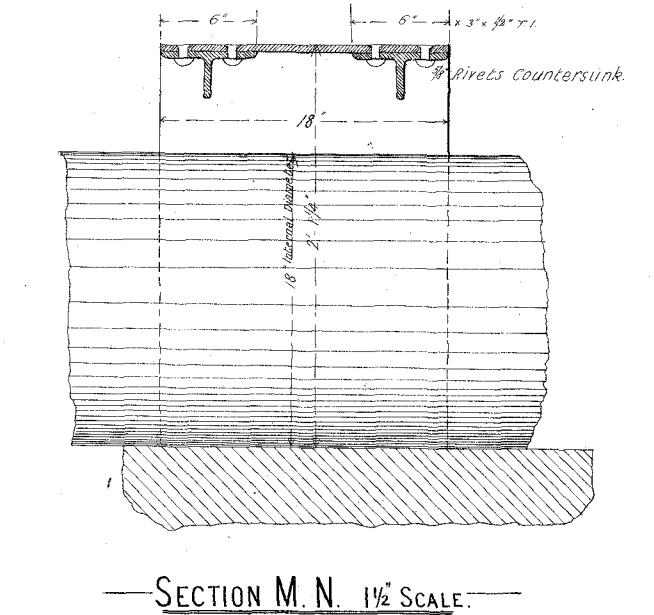
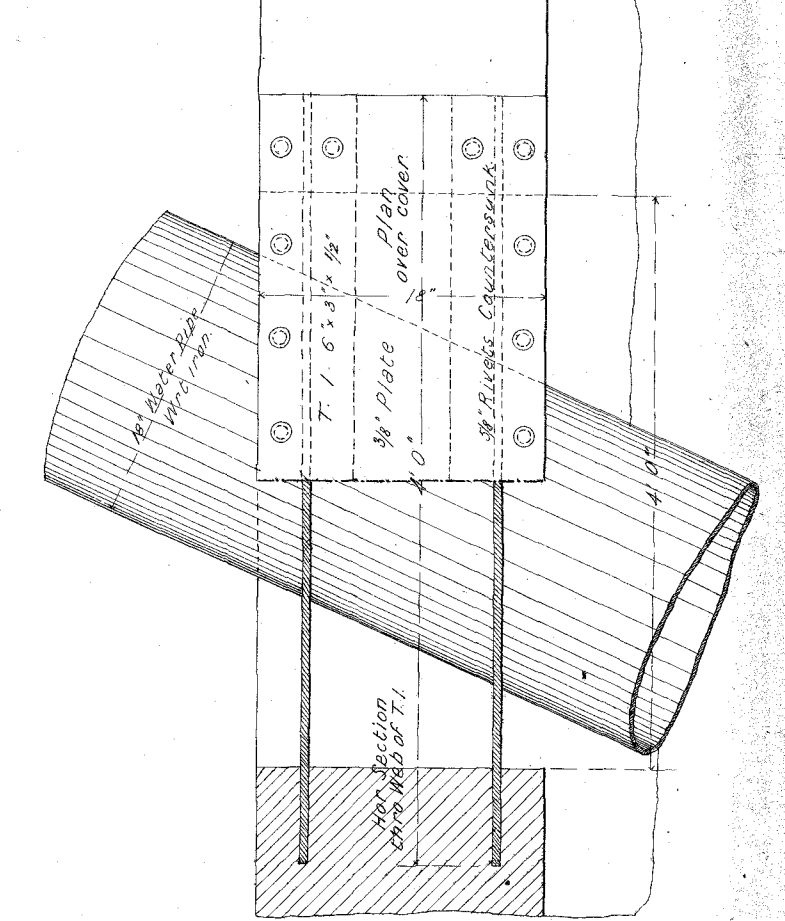
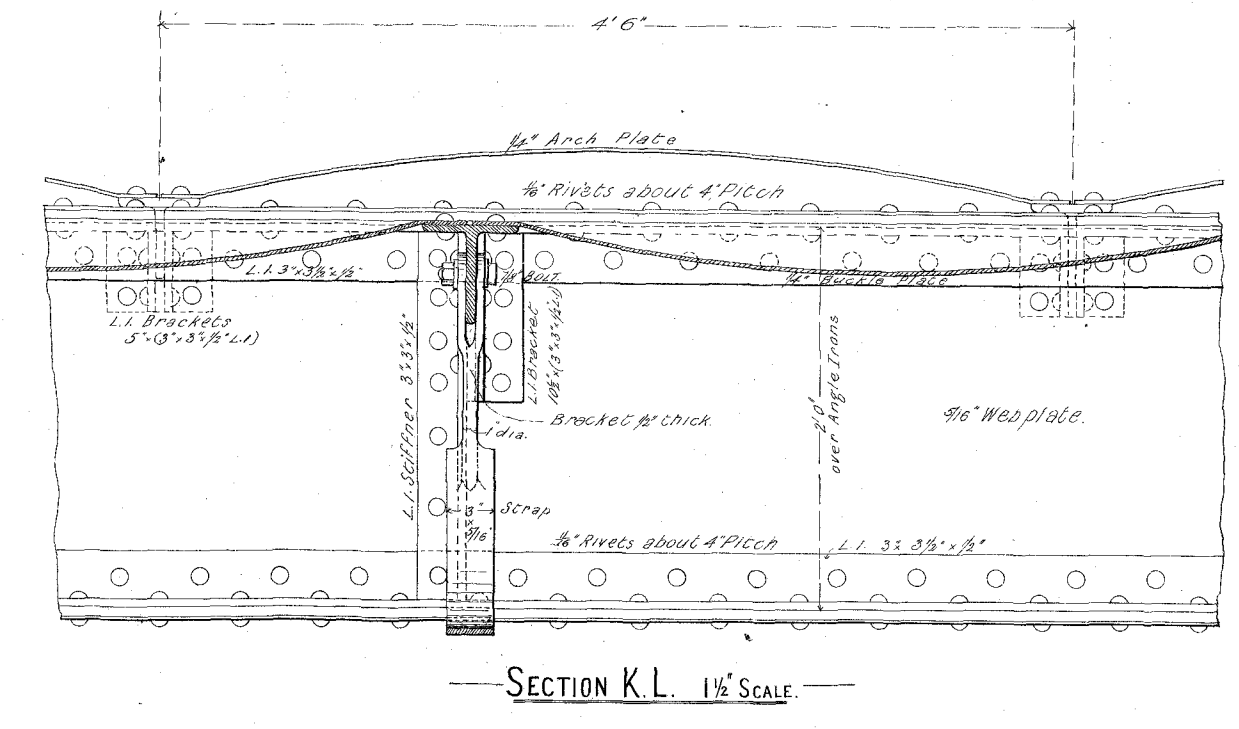
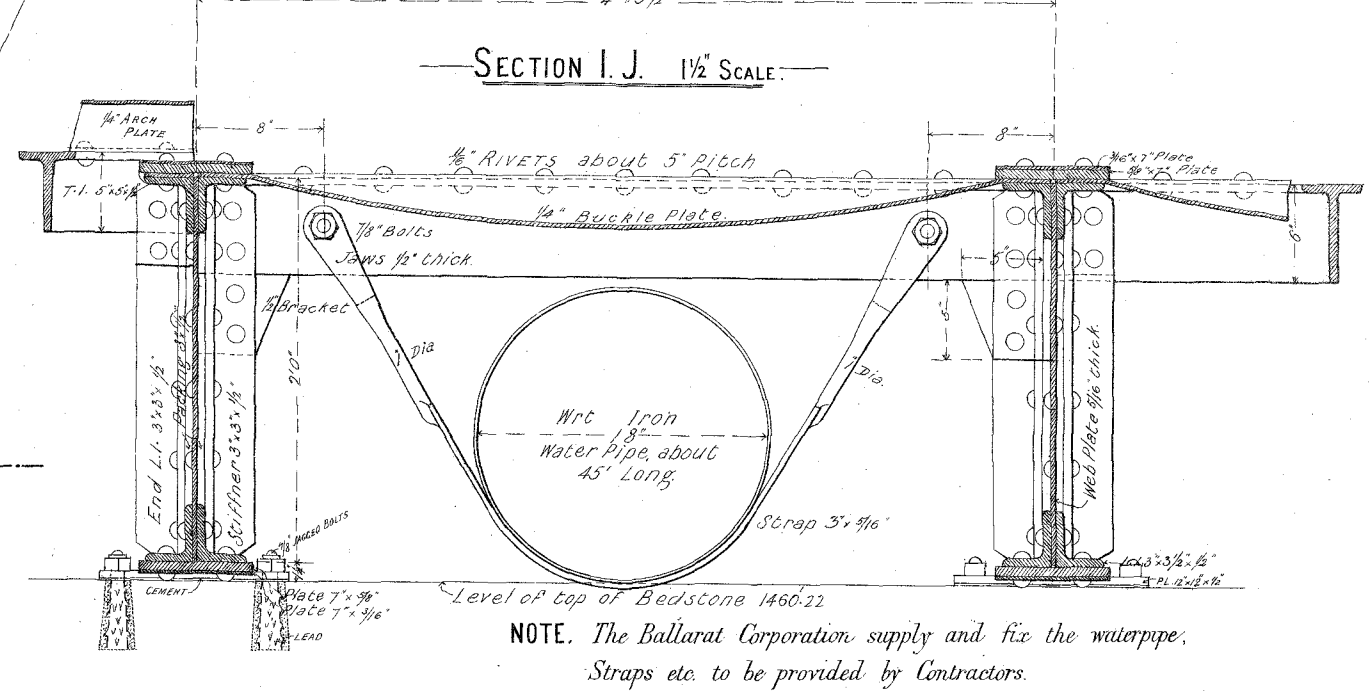
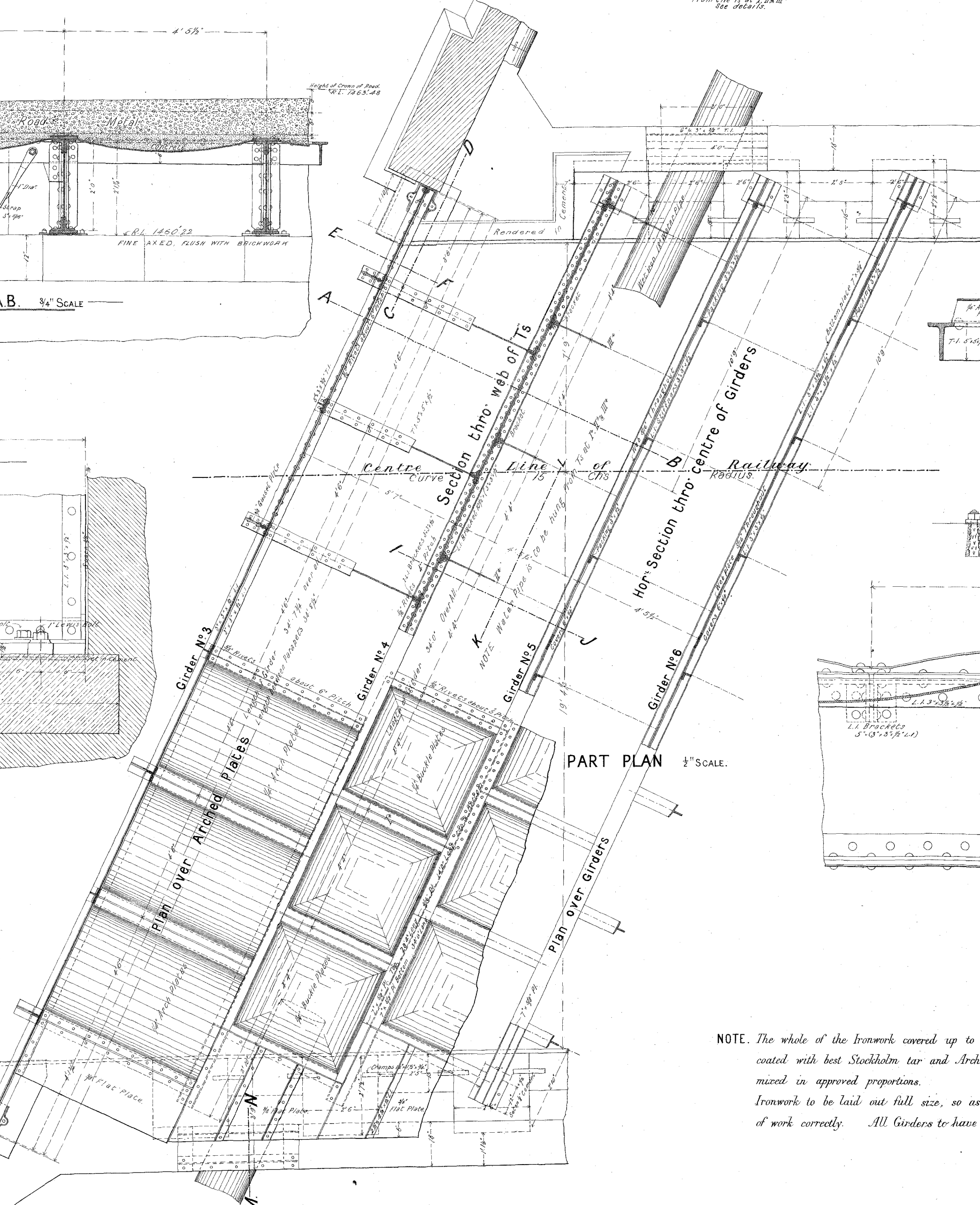
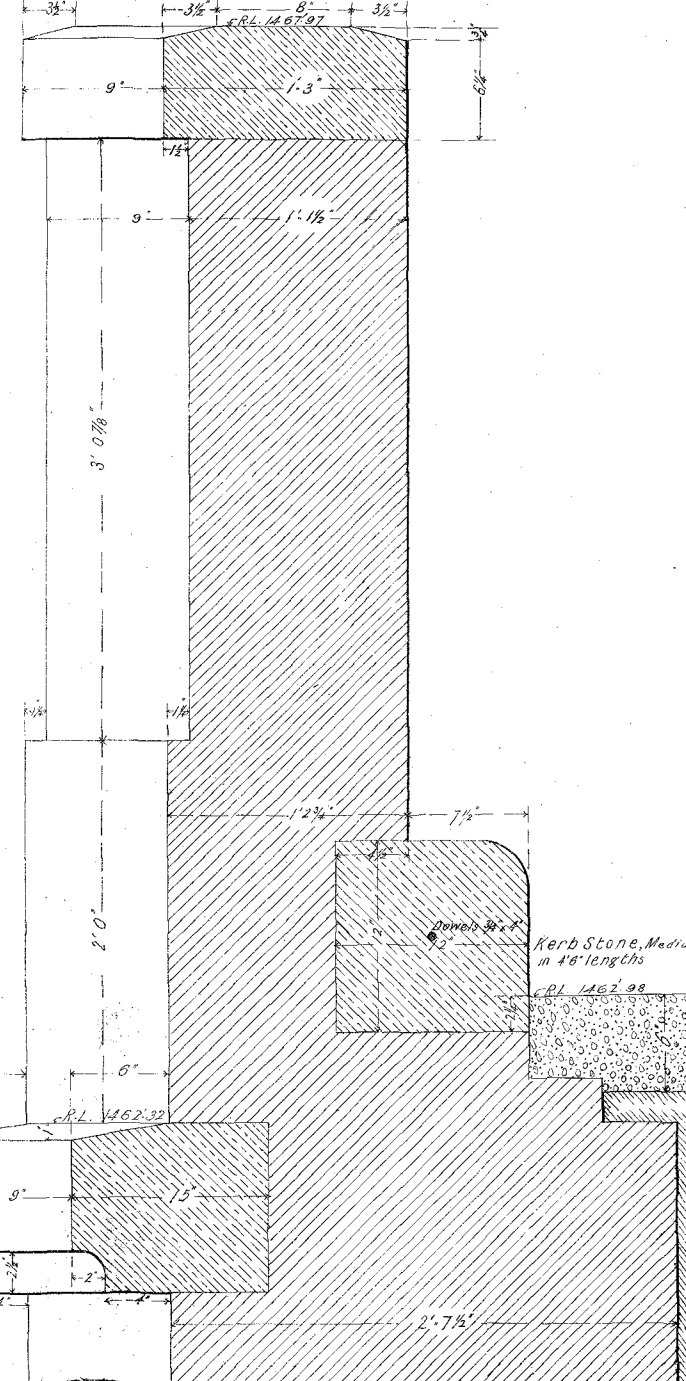
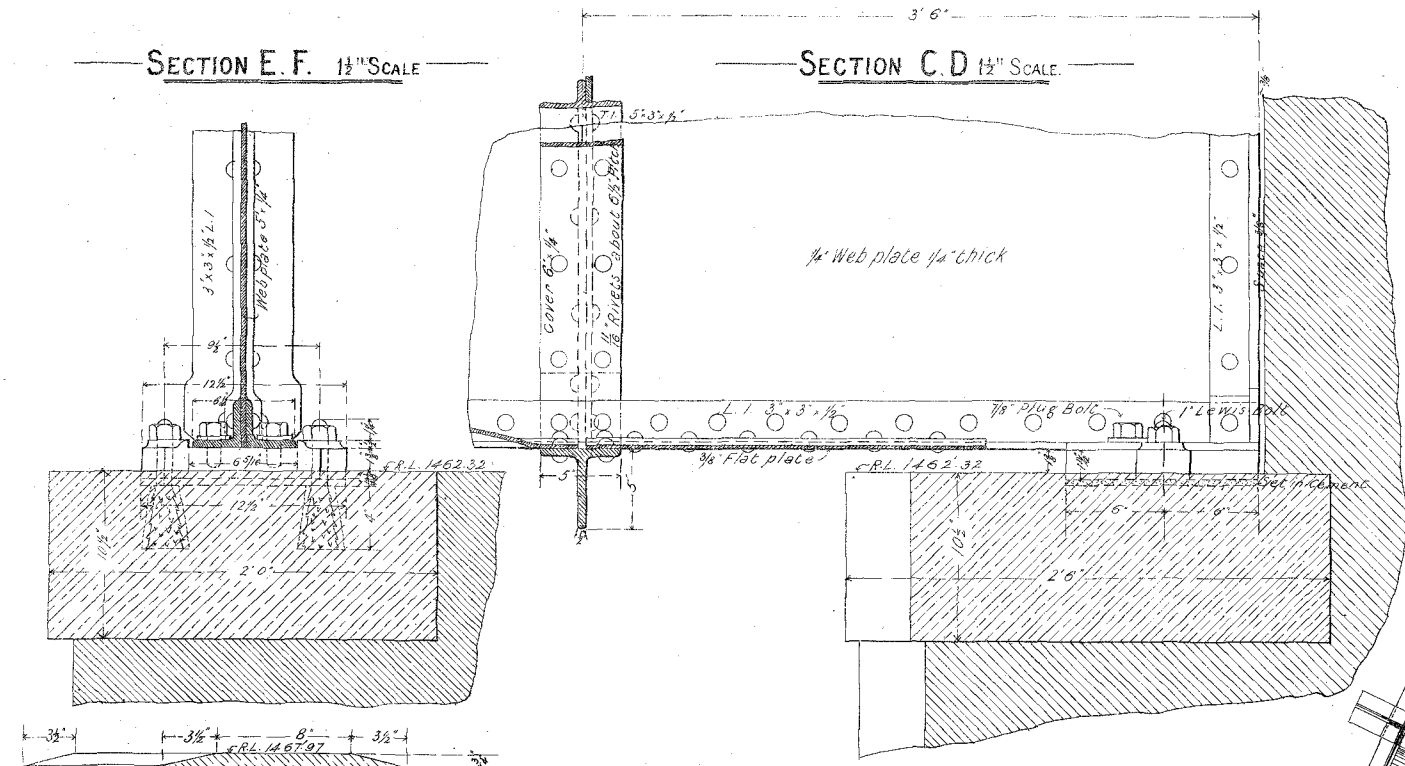
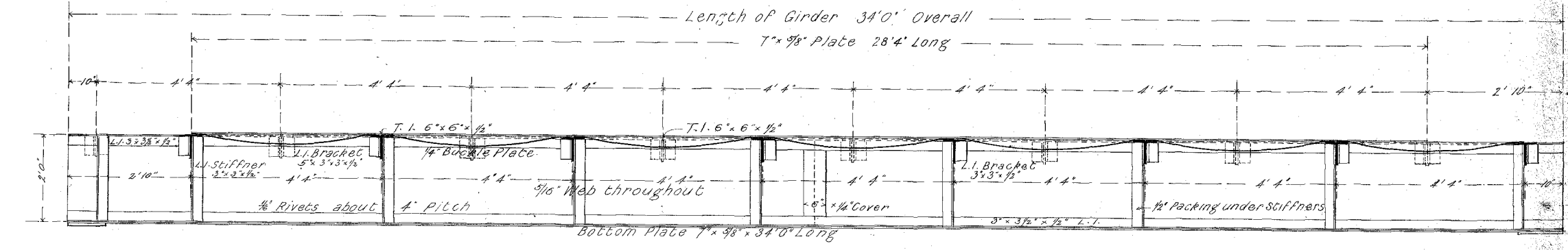
# VICTORIAN RAILWAYS, BALLARAT AND BUNYONG LINE. DETAILS OF IRONWORK FOR ROADBRIDGE AT VICTORIA STREET.

CONTRACT N<sup>o</sup> 5009  
N<sup>o</sup> 00

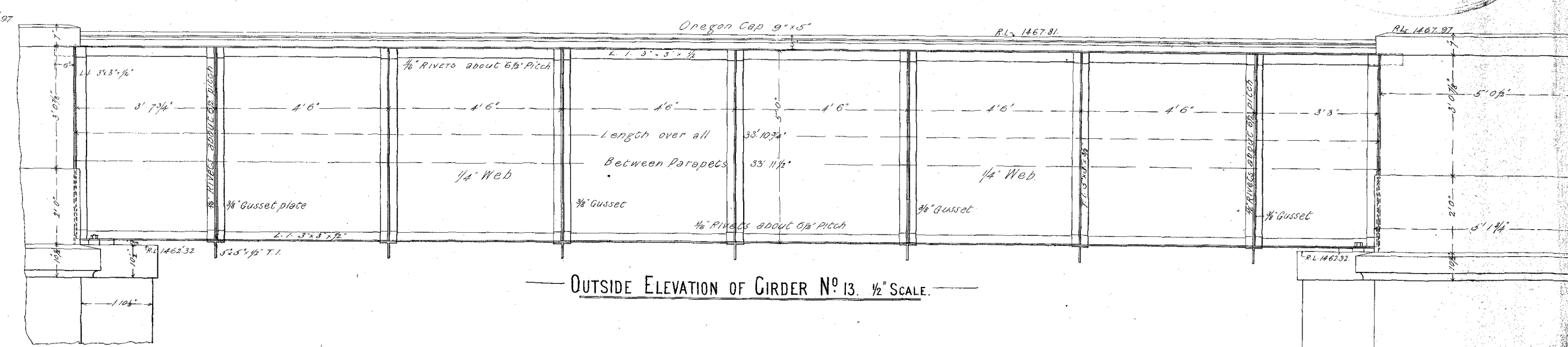
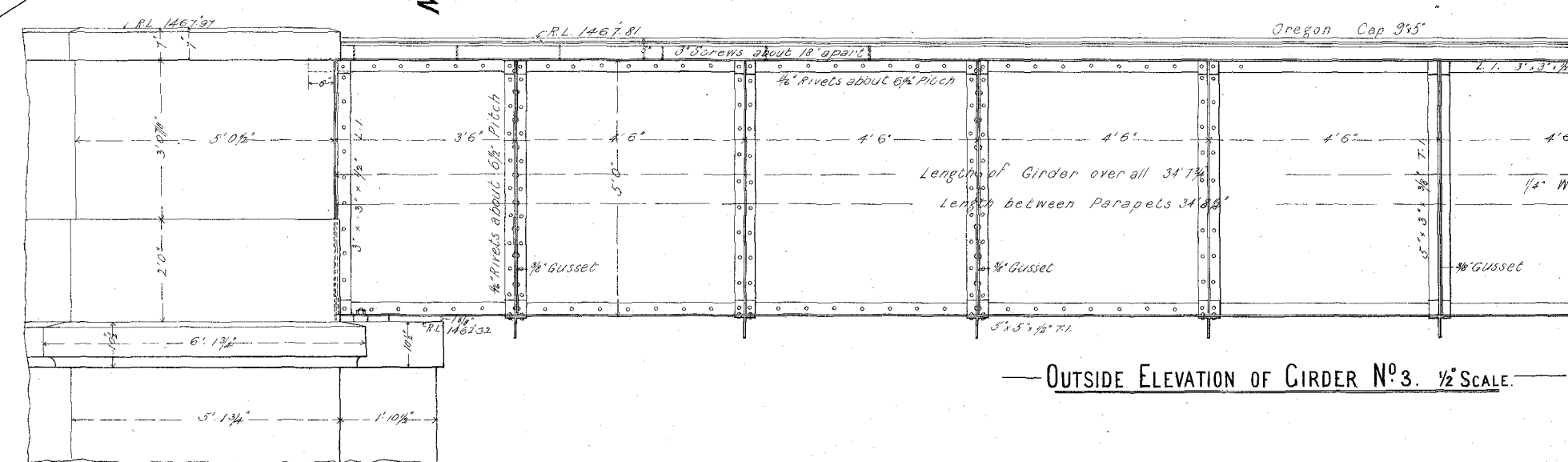
ELEVATION OF ROAD GIRDER N<sup>o</sup> 4 1/2" SCALE



ELEVATION OF GIRDERS N<sup>os</sup> 6, 7, 8, 9 & 10 1/2" SCALE



NOTE: The whole of the ironwork covered up to be thoroughly coated with best Stockholm tar and Archangel pitch mixed in approved proportions. Ironwork to be laid out full size, so as to get position of work correctly. All Girders to have 1/2" Camber.



OFFICE COPY.  
CHIEF ENGINEER  
VICTORIAN RAILWAYS  
DEC 15 1919