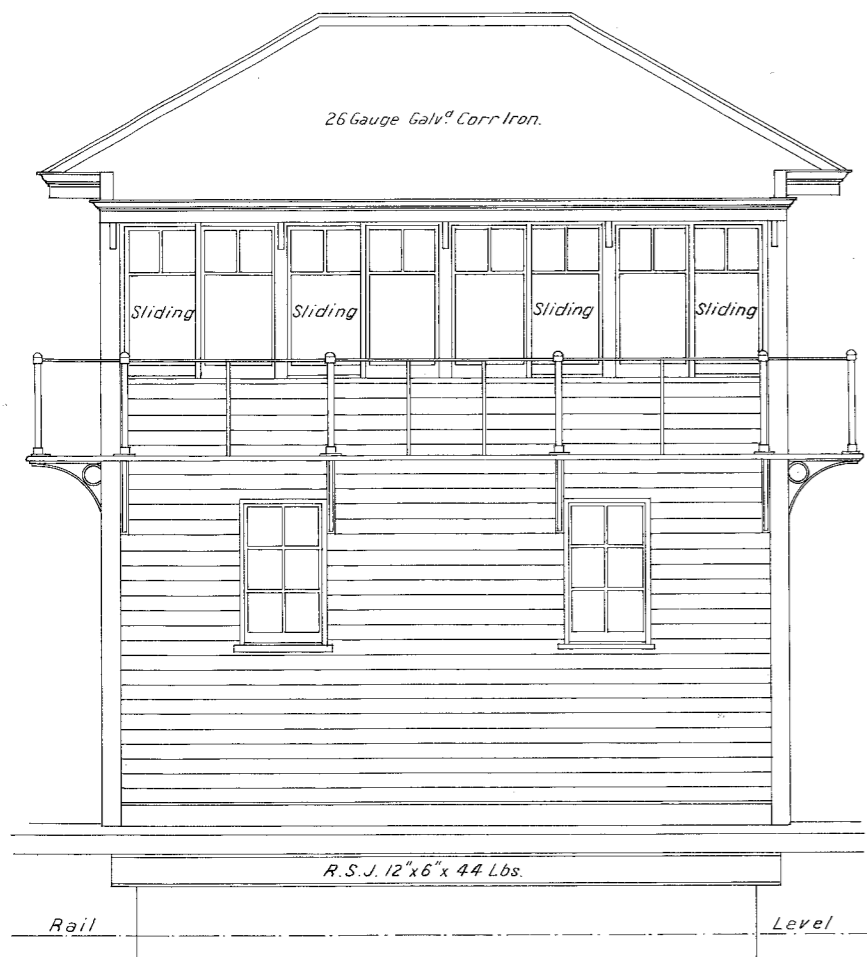
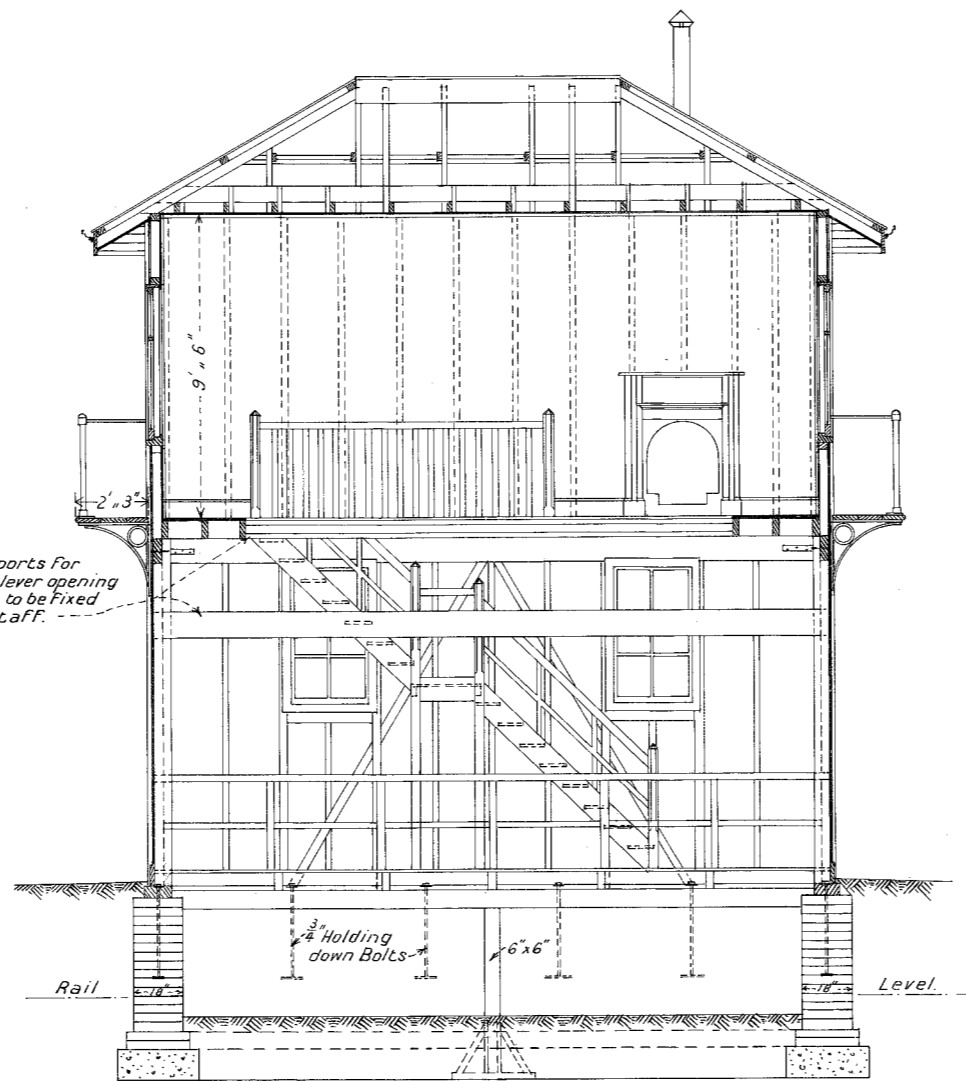


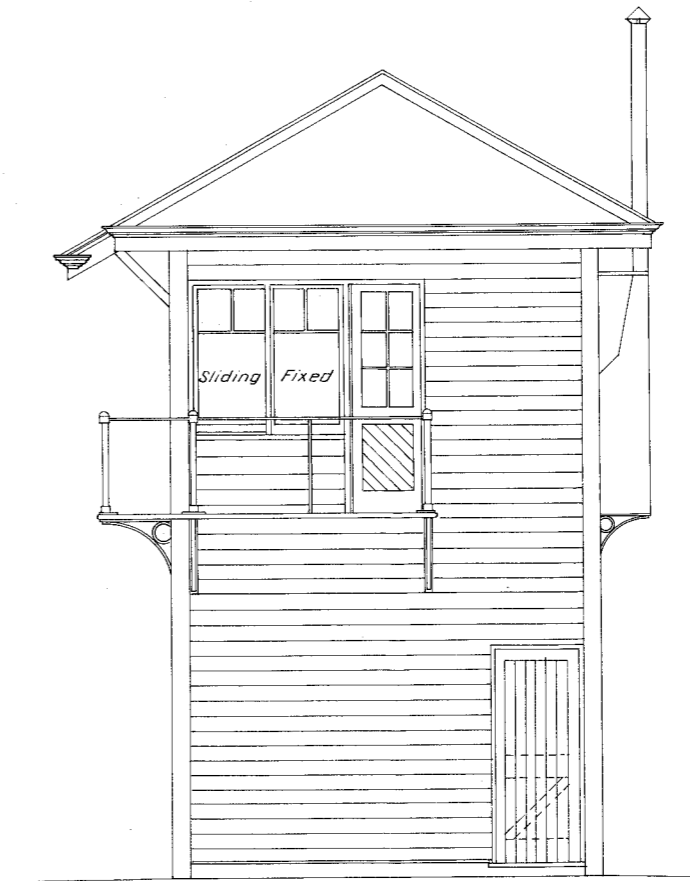
V. R.
CRESWICK STATION
NEW SIGNAL BOX
 Scale 4 Feet to an Inch



FRONT ELEVATION

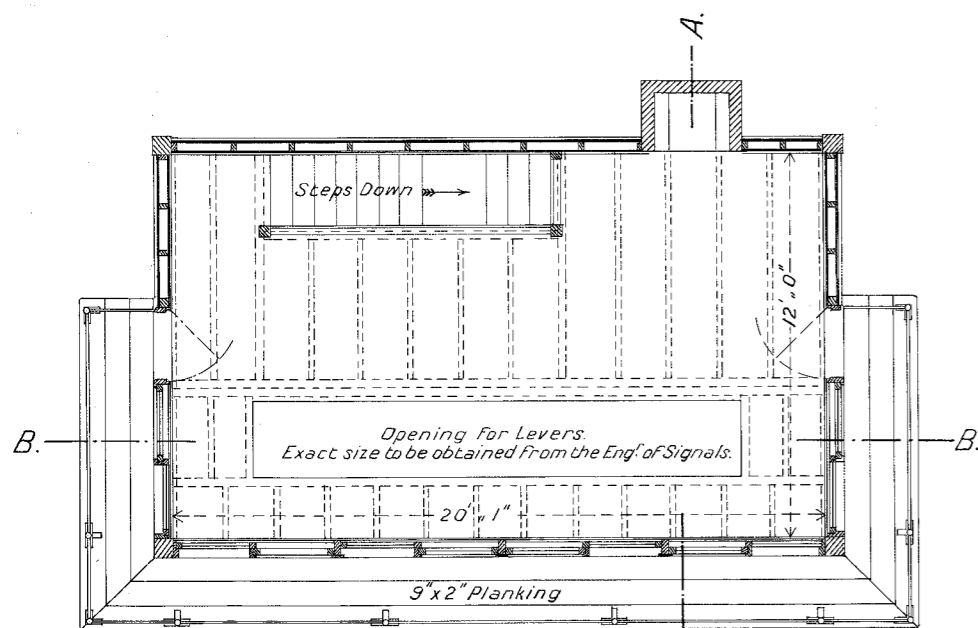


SECTION B. B.

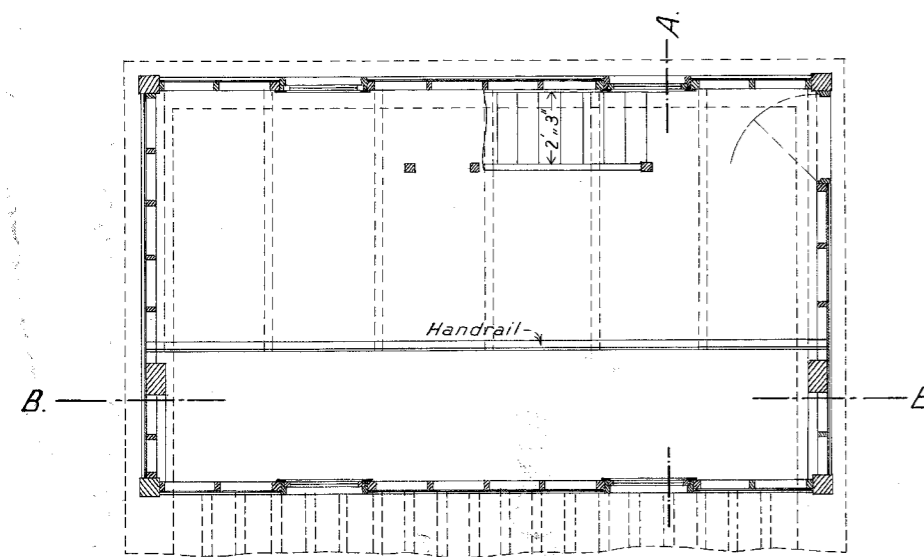


END ELEVATION

NOTE Intermediate Supports for
trimming joists to lever opening
apparatus beams to be fixed
by interlocking staff.



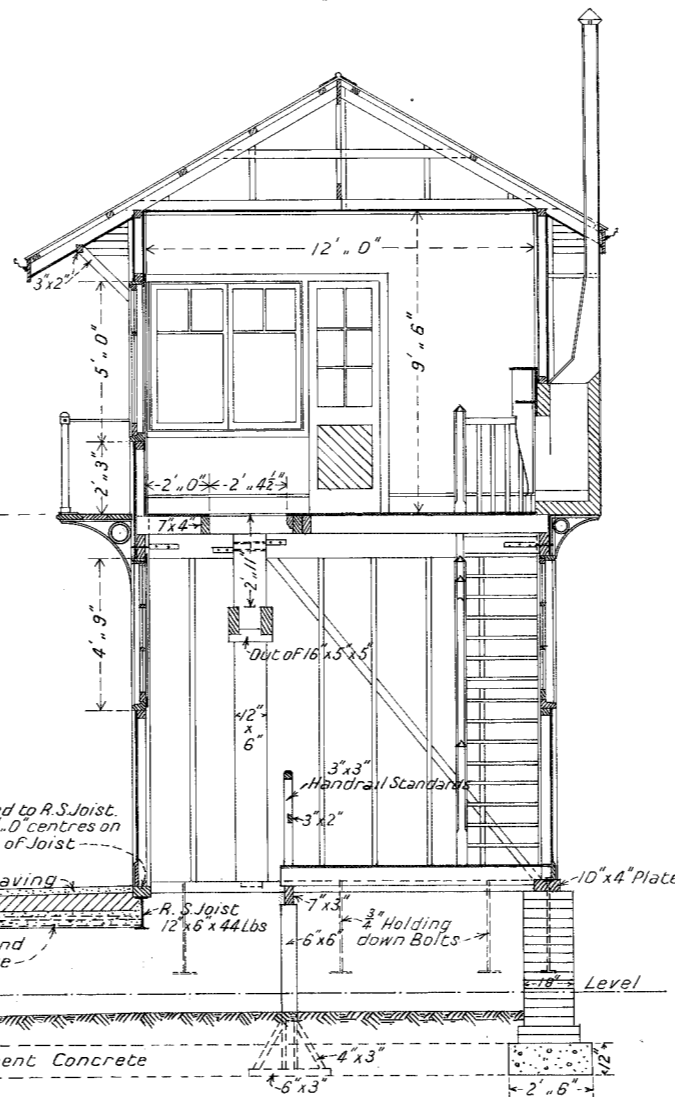
UPPER FLOOR PLAN



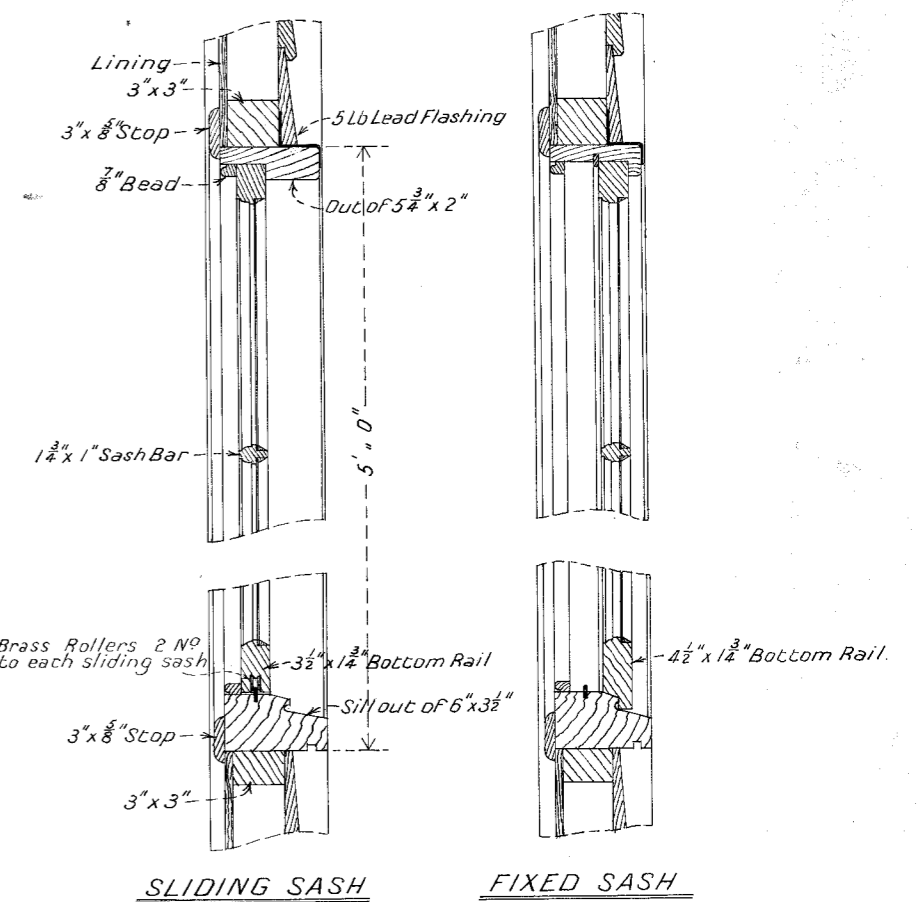
LOWER FLOOR PLAN

SCANTLINGS

- Angle Posts 7"x7"
- Lower Floor Joists 6"x2"
- Studs 3"x2"
- Top Plates 3"x3"
- Braces 3"x1 1/2"
- Upper Floor Joists 7"x2" with one row of
12" Herring Bone Strutting.
- Horizontal Ties 9"x3" secured to Posts
with 8" Scrap Bolts.
- Stair Newels 4"x4"
- Strings 9"x2"
- Handrail 4"x3"
- Treads 9"x1 1/2"
- Balusters 2"x2"
- Ceiling Joists 4"x2" secured to 6"x1 1/2"
hanging beam with 1 1/2" x 1 1/2" fillets.
- Rafters 4"x2"
- Collar Ties 3"x2"
- Ridge 3"x1 1/2"
- Battens for Iron 3"x2"
- Skirting 7"x1"
- Eaves Fascia 3"x1 1/2"
- Eaves Gutter 5"x3 1/2" with 2" Scotia under
Apparatus Beams 10"x4"
- Trimming Joists for Lever Opening 7"x4"
with 8" Fitch.

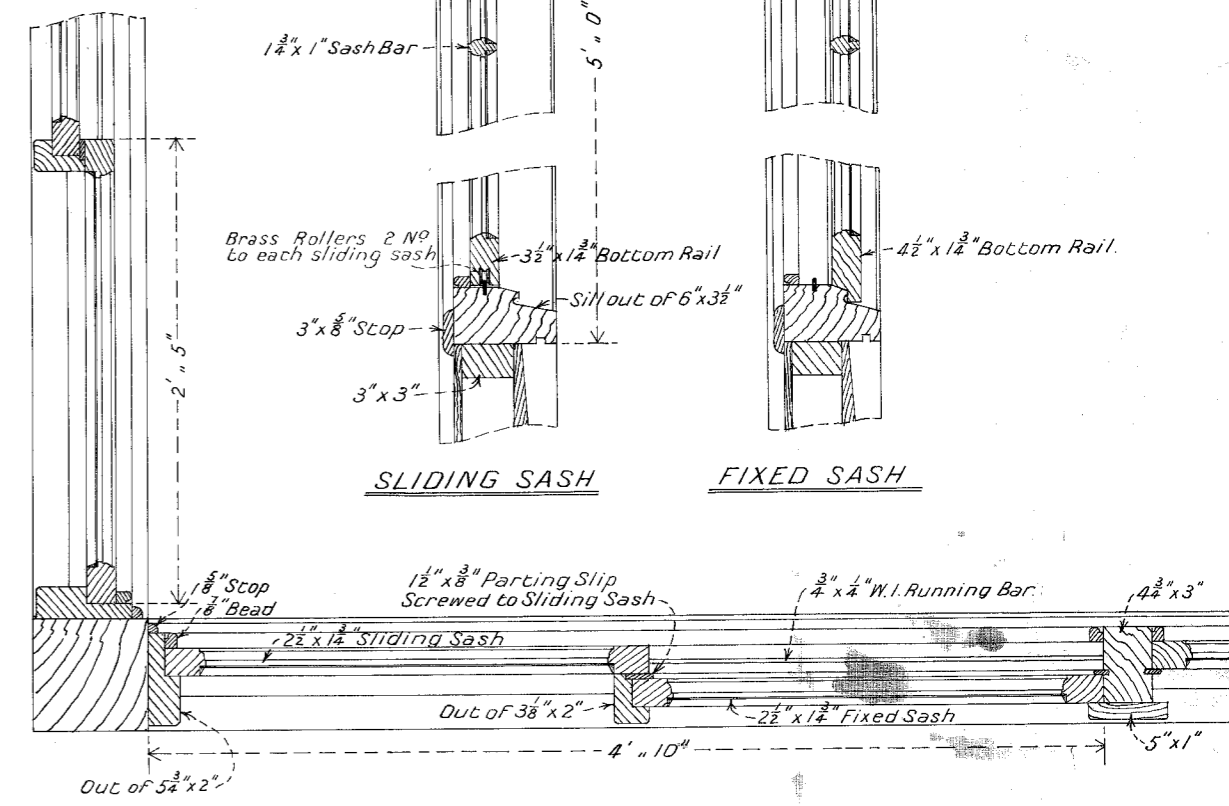


SECTION A. A.



SLIDING SASH

FIXED SASH



DETAIL OF SASHES

1/2" = 1" 0"

Slack
 18.12.11
M.P.
 18.12.11

