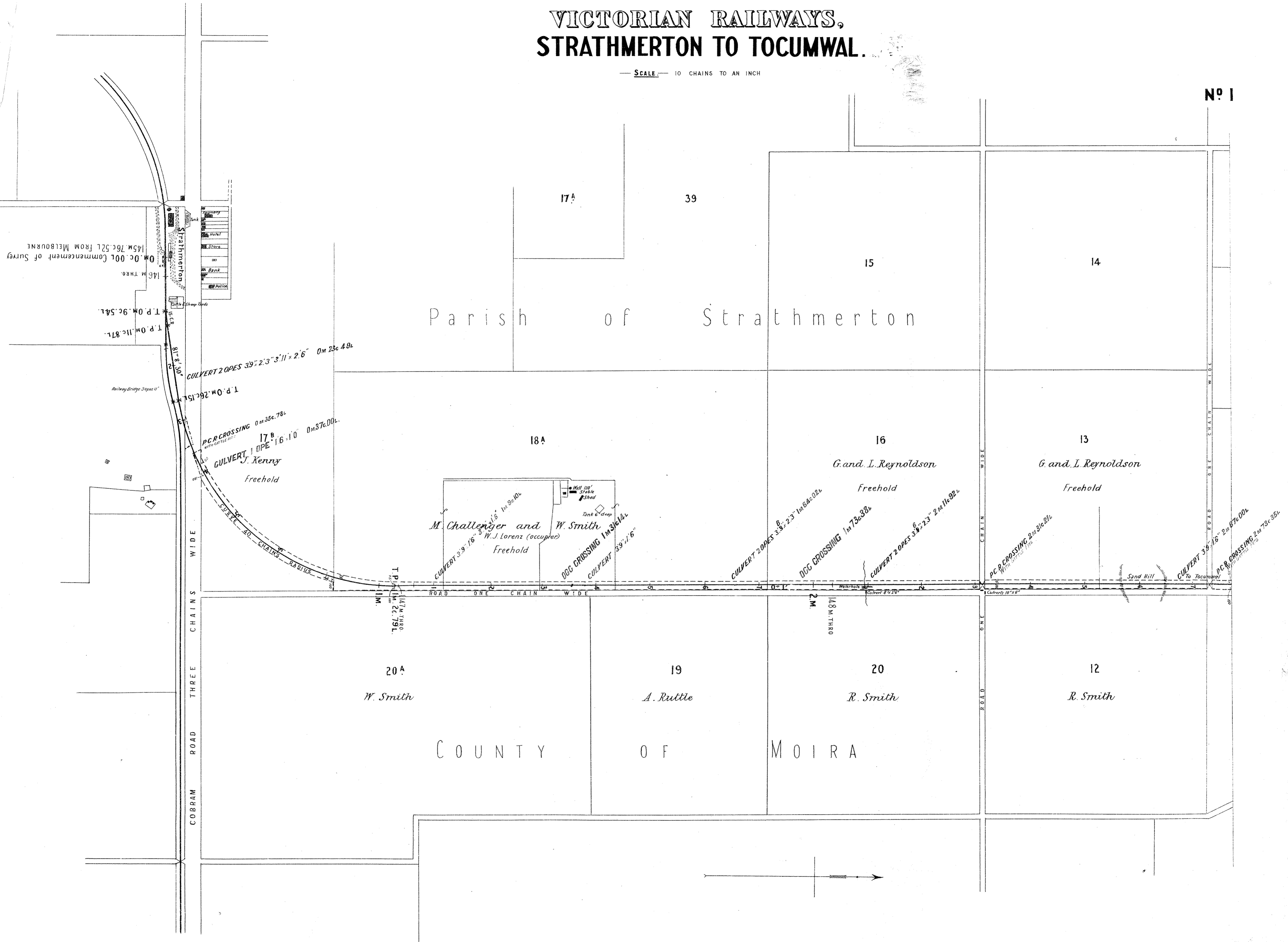


# VICTORIAN RAILWAYS, STRATHMERTON TO TOCUMWAL.

SCALE 10 CHAINS TO AN INCH

No 1



0 M. 0c. 00l. Commencement of Survey  
145 M. 76c. 52l. FROM MELBOURNE

146 M. THRO.

T.P. 0 M. 9c. 54l.

T.P. 0 M. 11c. 87l.

148 M. THRO.

149 M. THRO.

150 M. THRO.

151 M. THRO.

152 M. THRO.

153 M. THRO.

154 M. THRO.

155 M. THRO.

156 M. THRO.

157 M. THRO.

158 M. THRO.

159 M. THRO.

160 M. THRO.

161 M. THRO.

162 M. THRO.

163 M. THRO.

164 M. THRO.

165 M. THRO.

166 M. THRO.

167 M. THRO.

168 M. THRO.

169 M. THRO.

170 M. THRO.

171 M. THRO.

172 M. THRO.

173 M. THRO.

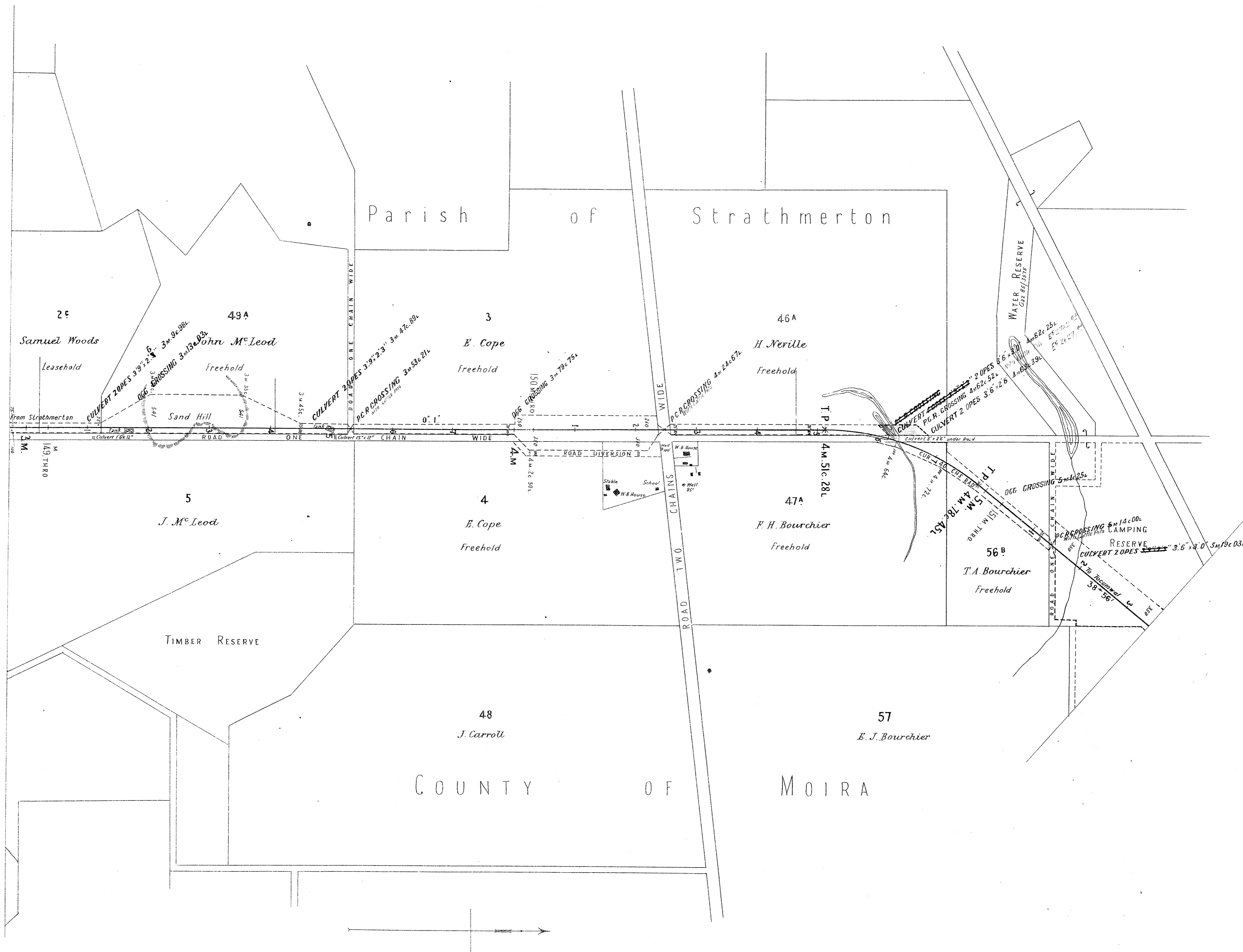
174 M. THRO.

175 M. THRO.

# VICTORIAN RAILWAYS, STRATHMERTON TO TOCUMWAL.

SCALE 10 CHAINS TO AN INCH

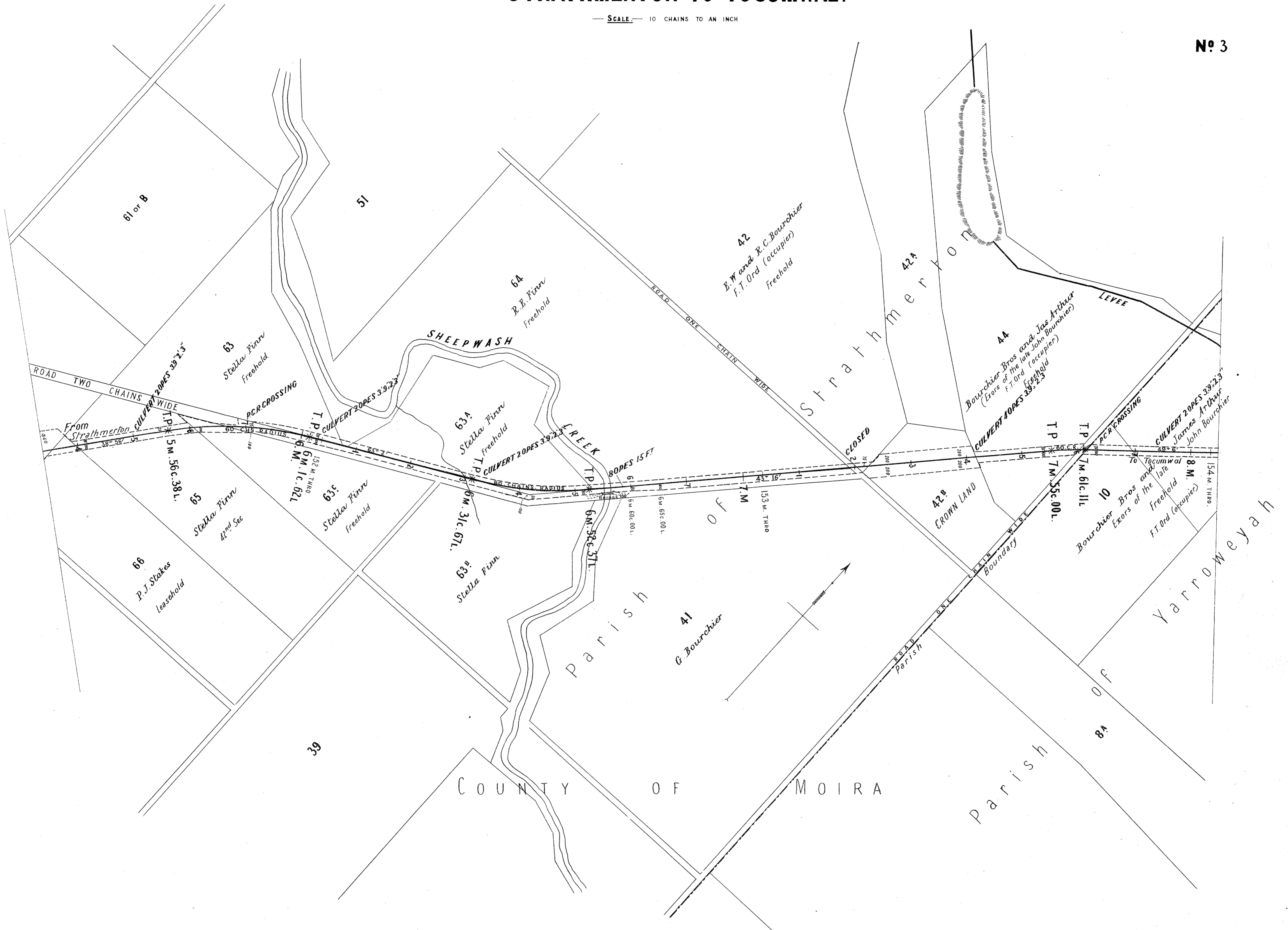
No 2



# VICTORIAN RAILWAYS, STRATHMERTON TO TOCUMWAL.

SCALE 10 CHAINS TO AN INCH

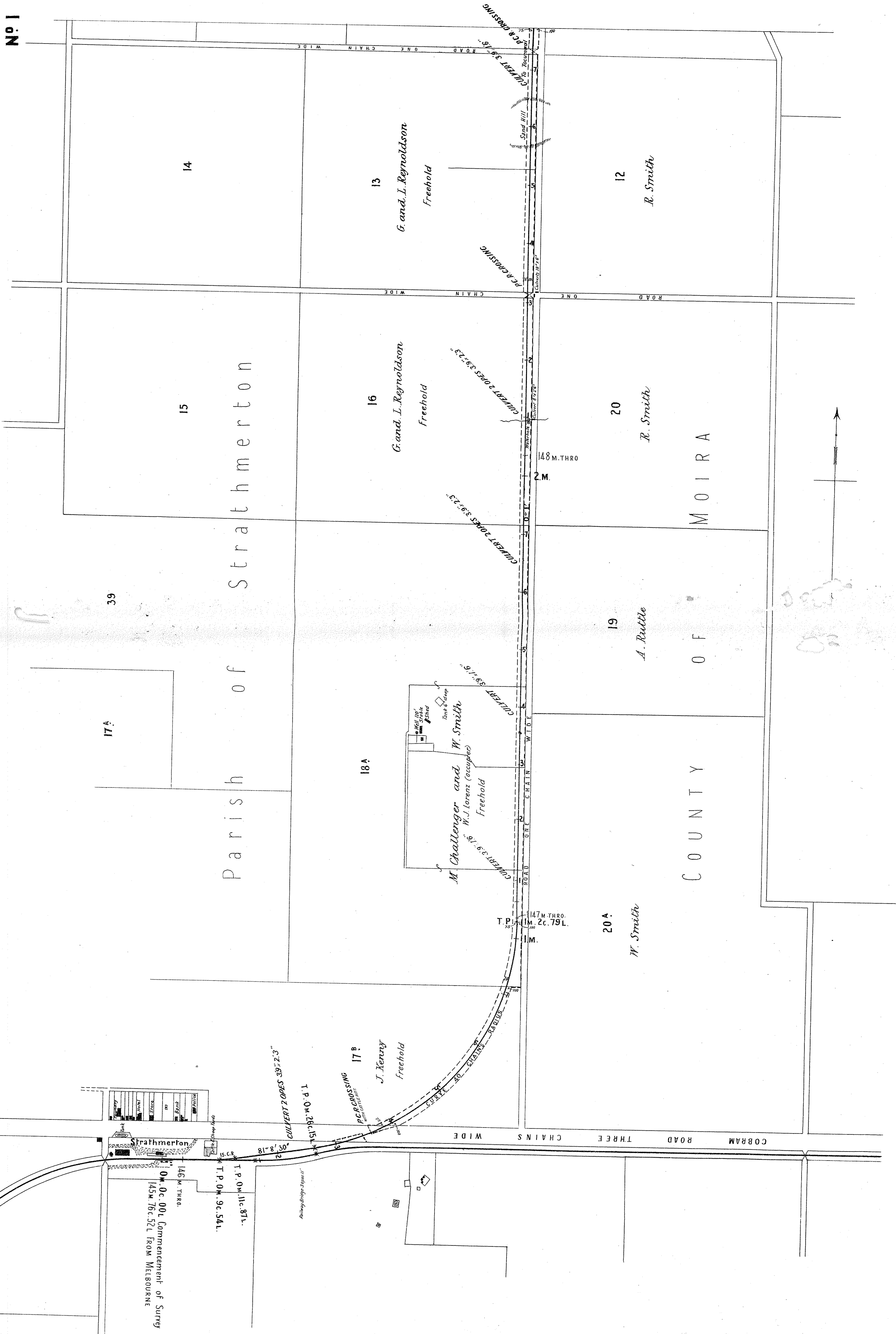
No 3



# VICTORIAN RAILWAYS, STRATHMERTON TO TOCUMWAL.

SCALE—10 CHAINS TO AN INCH

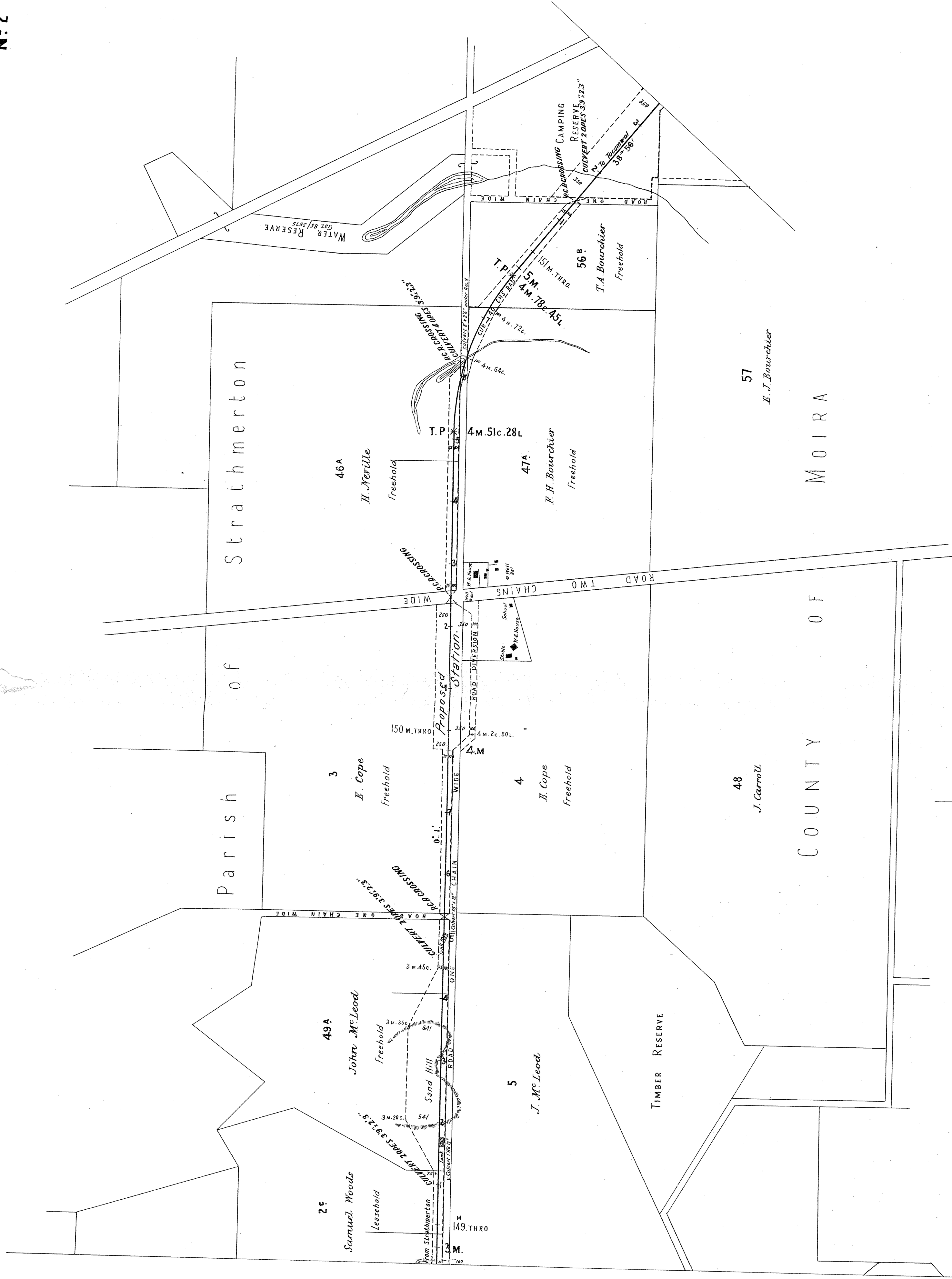
No 1



# VICTORIAN RAILWAYS, STRATHMERTON TO TOCUMWAL.

SCALE 10 CHAINS TO AN INCH

No 2

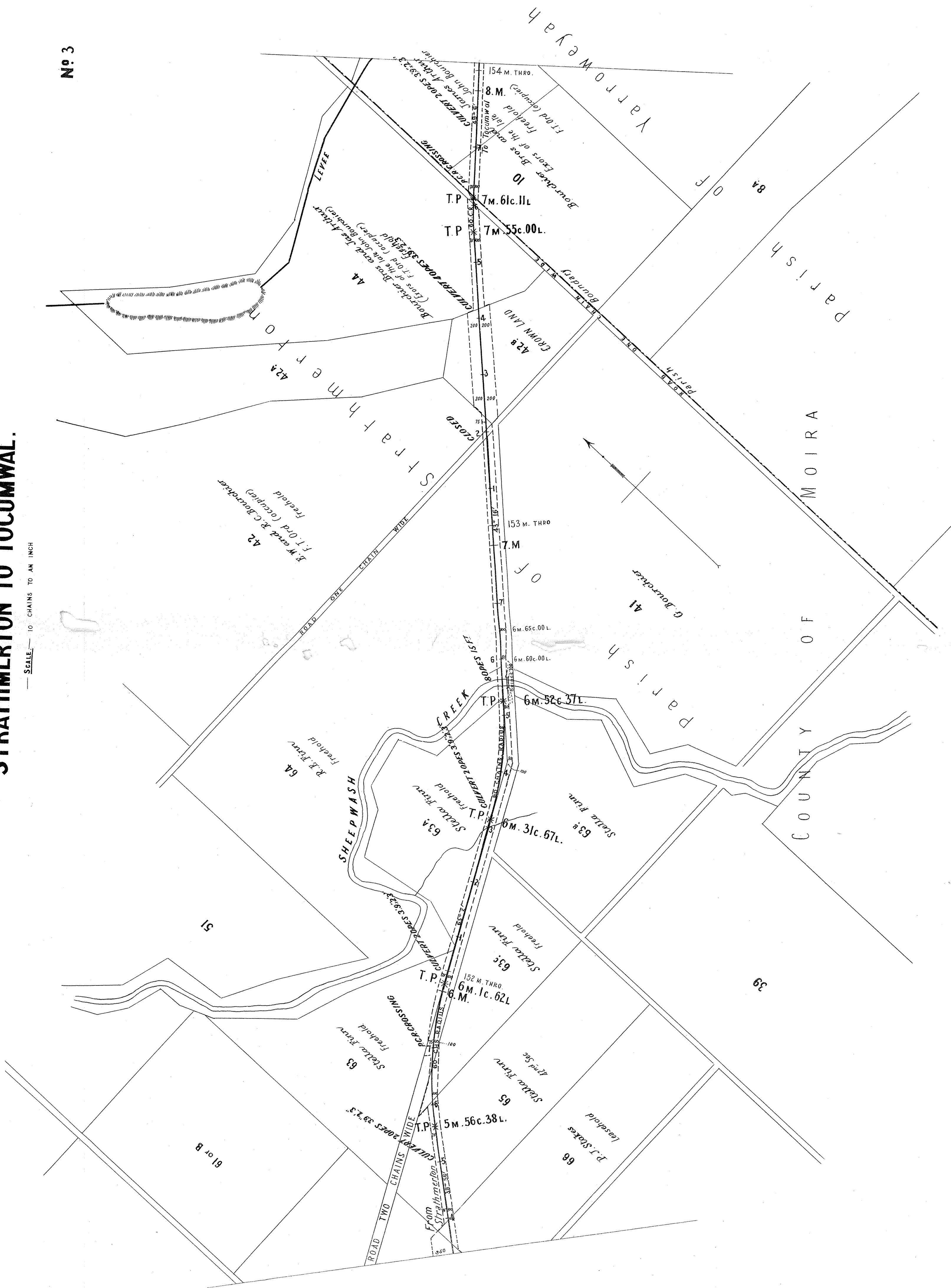




**VICTORIAN RAILWAYS,  
STRATHMERTON TO TOCUMWAL.**

— SCALE — 10 CHAINS TO AN INCH

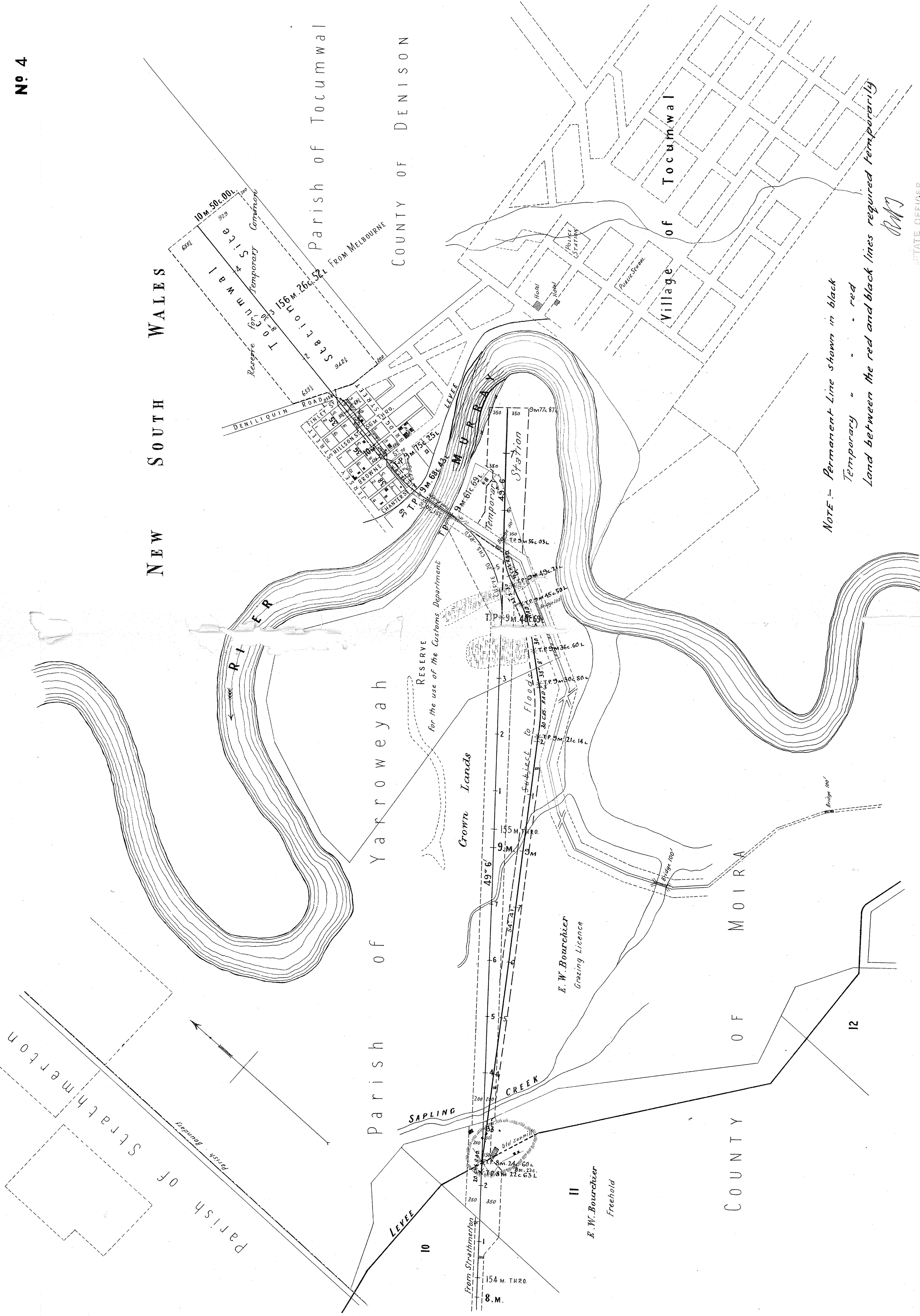
No 3



# VICTORIAN RAILWAYS, STRATHMERTON TO TOCUMWAL.

SCALE 10 CHAINS TO AN INCH

No 4



NOTE:— Permanent Line shown in black  
Temporary " " " " red  
Land between the red and black lines required temporarily

RMJ

STATE OFFICER

16745  
RAILWAY DEPARTMENT MELBOURNE NOV. 1864

# VICTORIAN RAILWAYS STRATHMERTON TO TOCUMWAL.

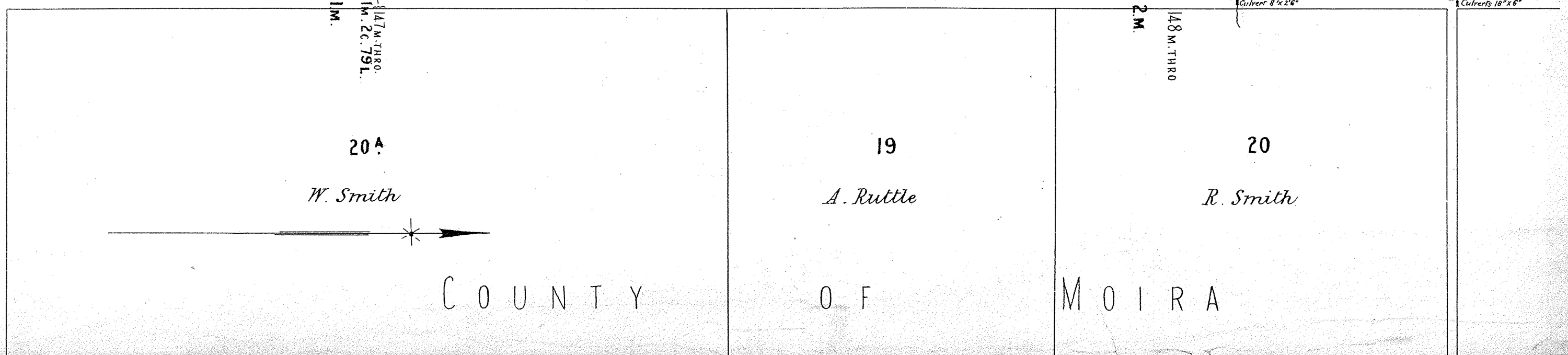
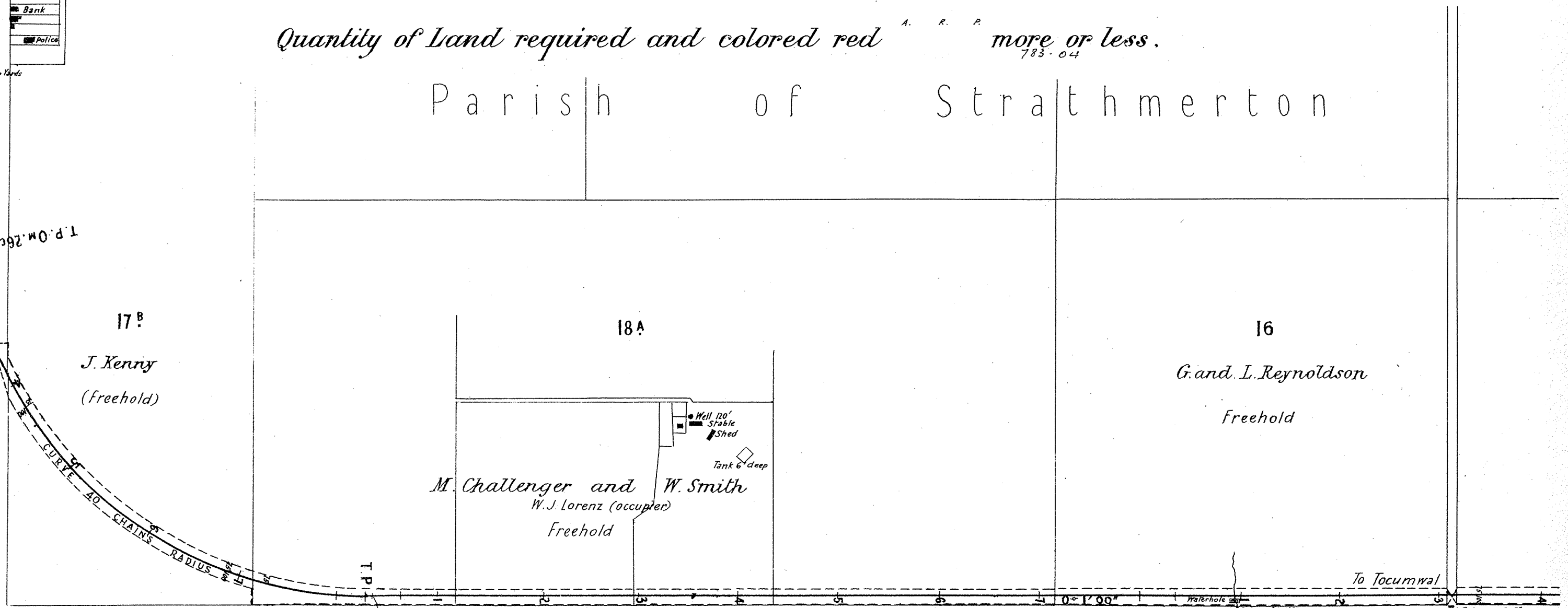
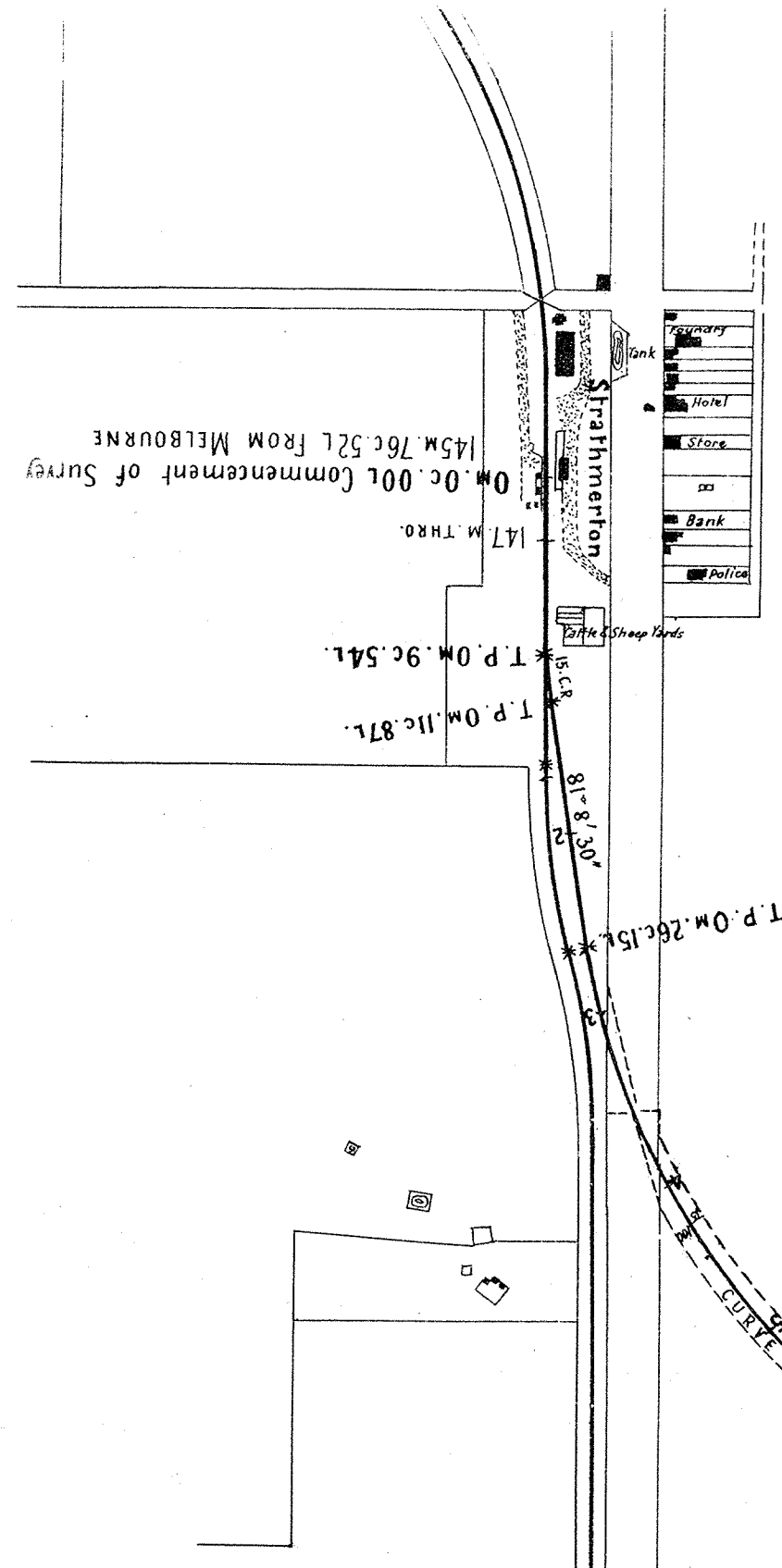
①  
Reference No. ....

Plan of Land belonging to ..... occupied by .....  
Situating in the Parish of Strathmerton ..... in the County of Moira

SCALE 10 CHAINS TO ONE INCH

Quantity of Land required and colored red <sup>A. R. P.</sup> more or less.  
783.04

Parish of Strathmerton



C O U N T Y O F M O I R A



# VICTORIAN RAILWAYS

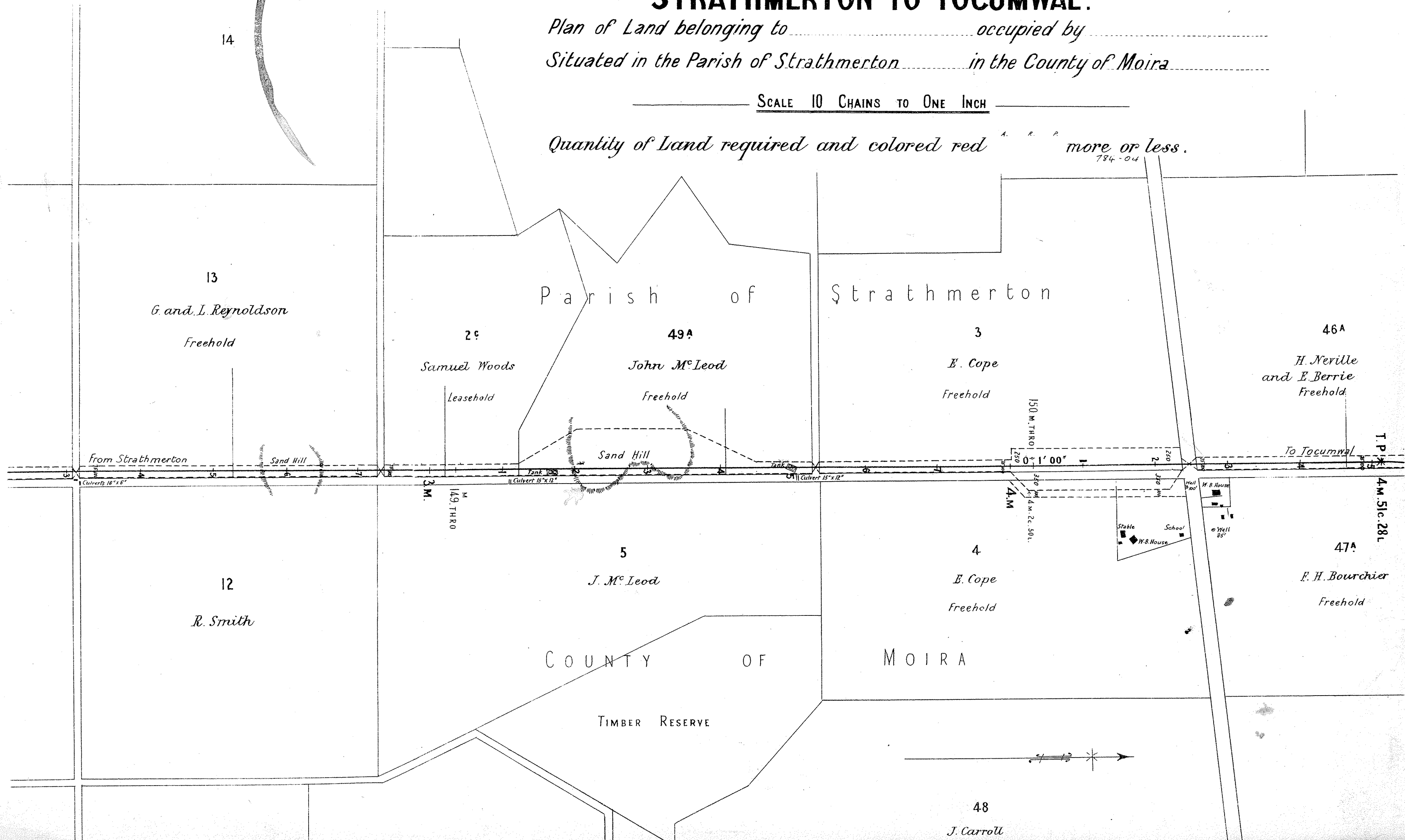
## STRATHMERTON TO TOCUMWAL.

②  
Reference No. ....

Plan of Land belonging to ..... occupied by .....  
Situating in the Parish of Strathmerton ..... in the County of Moira .....

SCALE 10 CHAINS TO ONE INCH

Quantity of Land required and colored red <sup>A. R. P.</sup> more or less.  
784-04



# VICTORIAN RAILWAYS

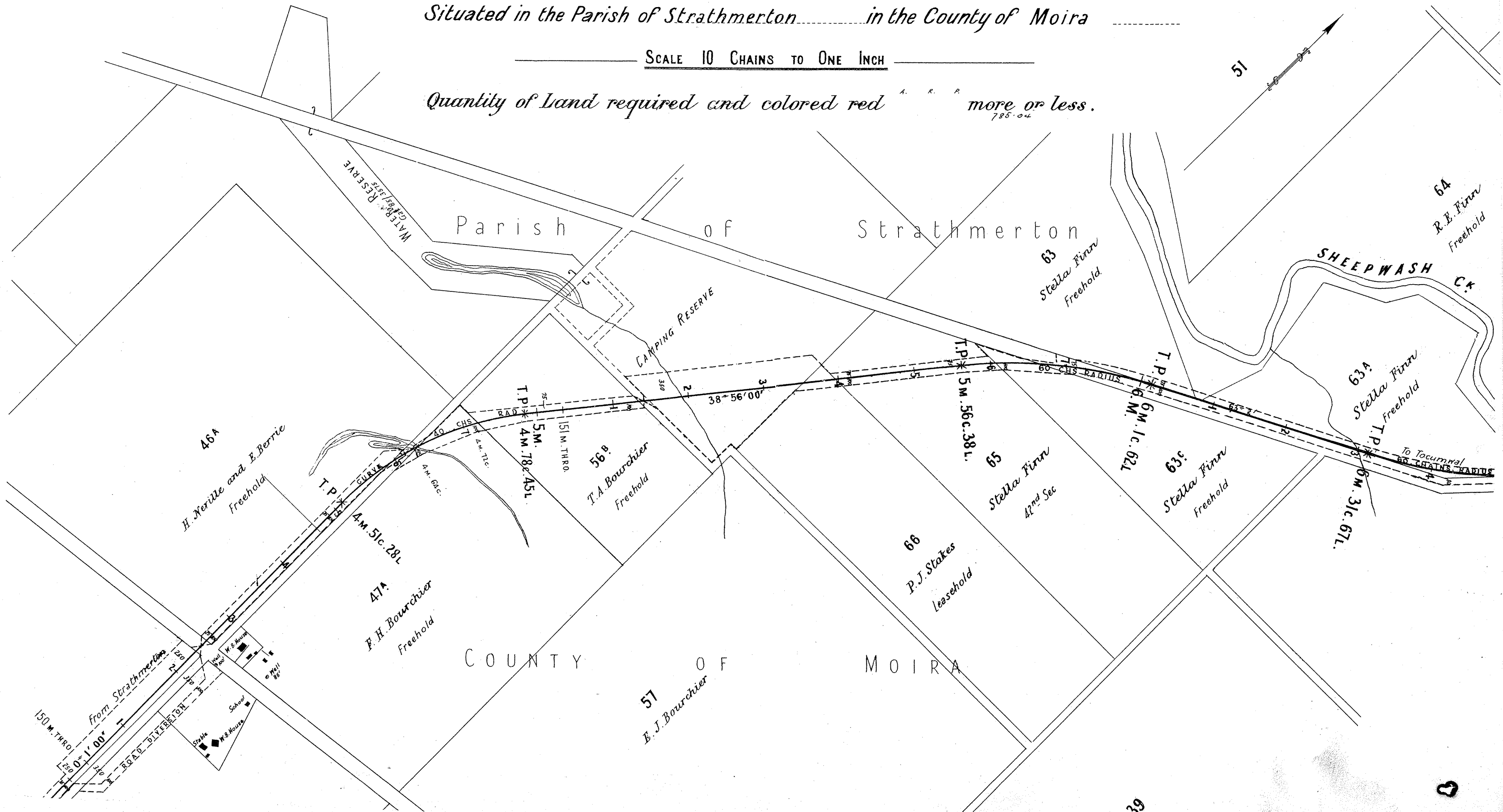
## STRATHMERTON TO TOCUMWAL.

③  
Reference No. ....

Plan of Land belonging to ..... occupied by .....  
Situatd in the Parish of Strathmerton ..... in the County of Moira .....

SCALE 10 CHAINS TO ONE INCH

Quantity of Land required and colored red <sup>A. R. P.</sup> more or less.  
785.04



# VICTORIAN RAILWAYS

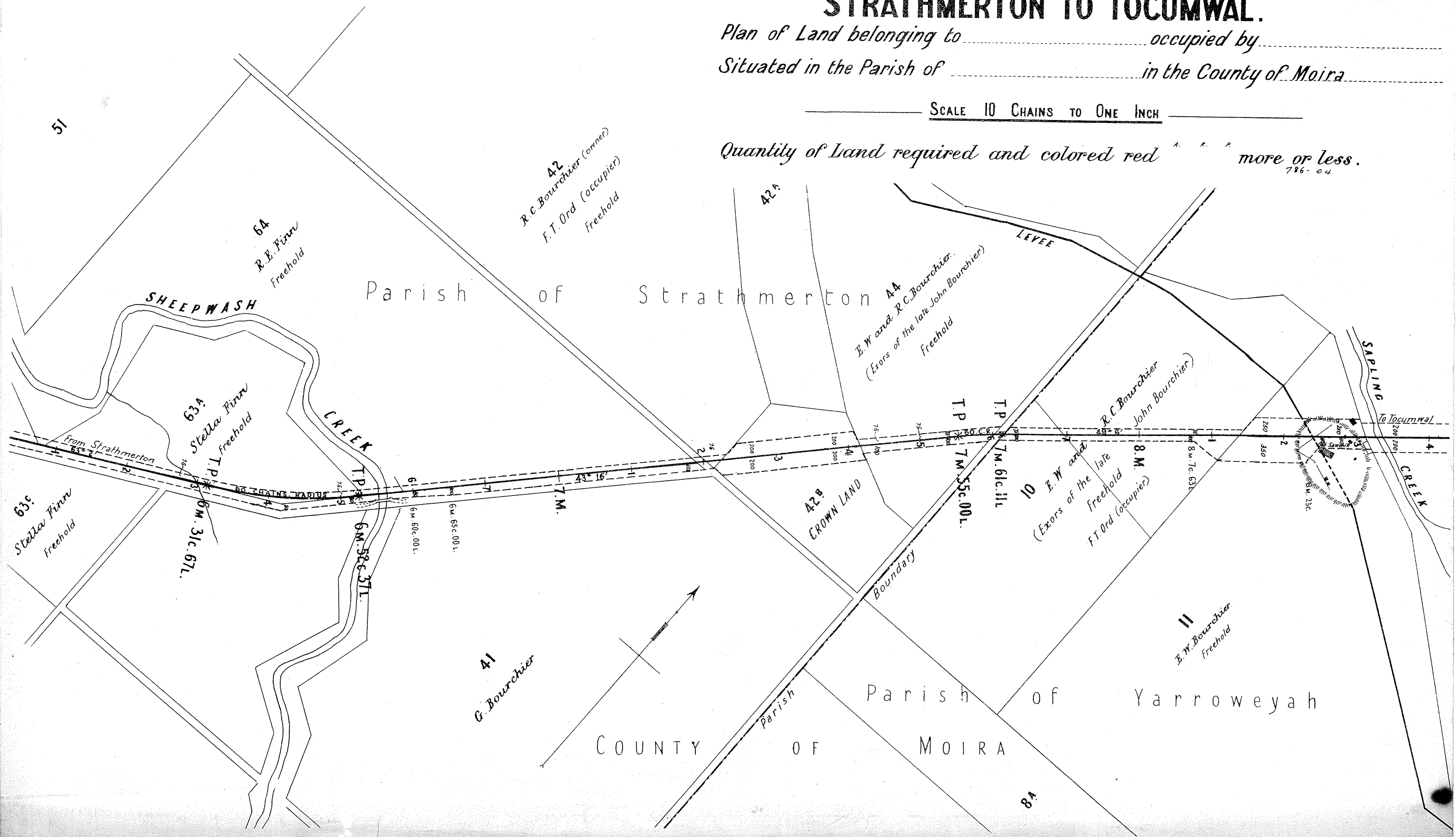
## STRATHMERTON TO TOCUMWAL.

④  
Reference No. ....

Plan of Land belonging to ..... occupied by .....  
Situating in the Parish of ..... in the County of Moira .....

SCALE 10 CHAINS TO ONE INCH

Quantity of Land required and colored red <sup>A. A. P.</sup> more or less.  
786.04



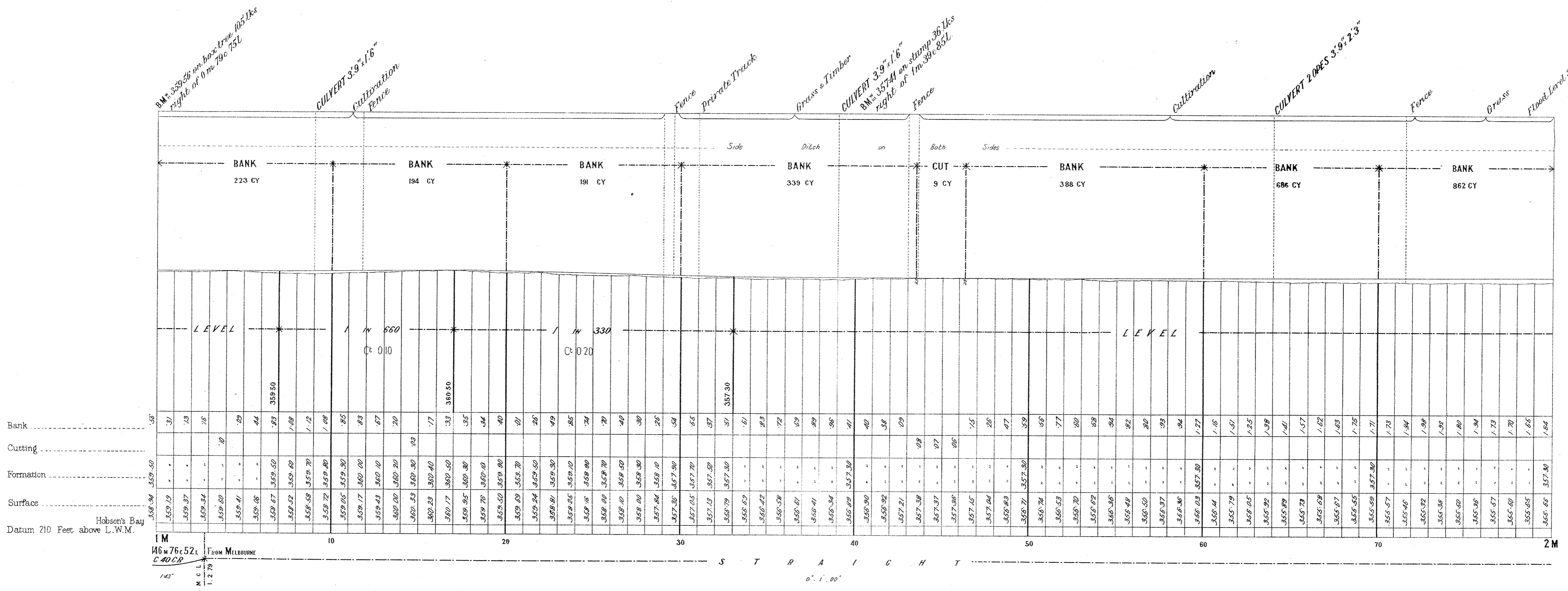
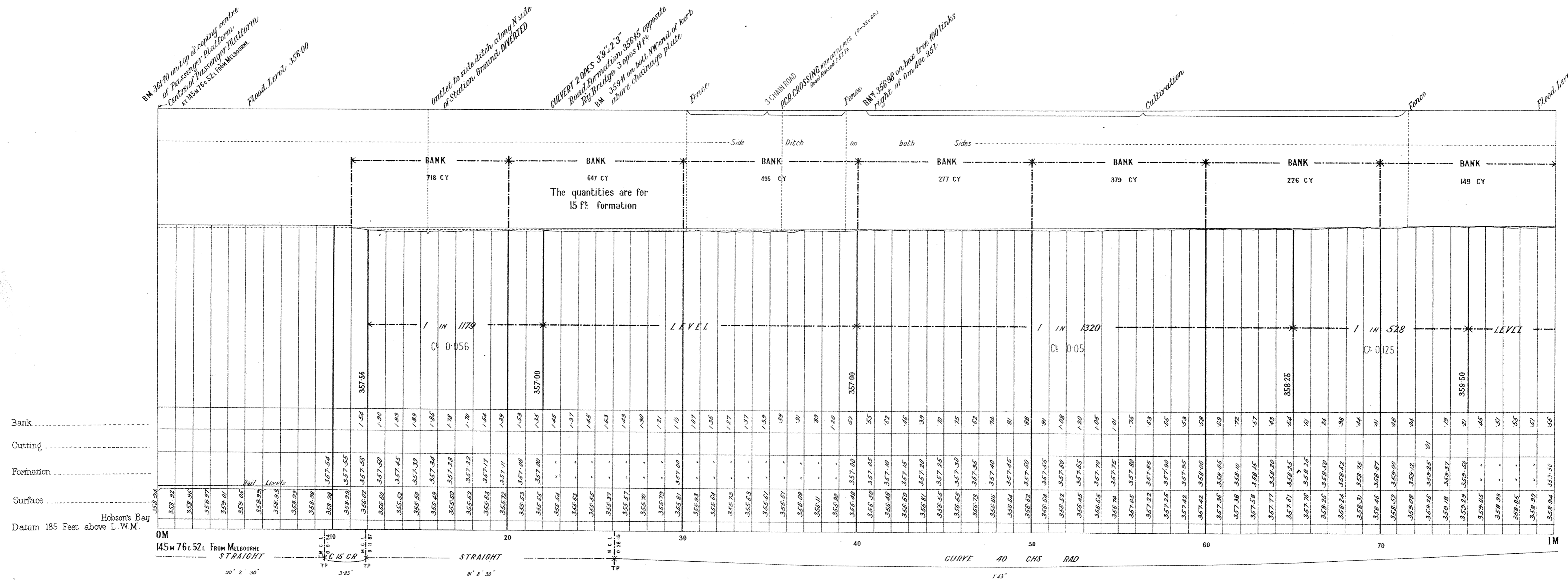


# VICTORIAN RAILWAYS, STRATHMERTON TO TOCUMWAL.

The figures under the description of the Curves at the bottom of the Section denote the super-elevation of the outer rail; Speed 30 miles an hour.

SCALES { HORIZONTAL, 4 CHAINS TO AN INCH.  
VERTICAL, 40 FEET TO AN INCH.

No 1













# VICTORIAN RAILWAYS, STRATHMERTON TO TOCUMWAL.

The figures under the description of the Curves at the bottom of the Section denote the super-elevation of the outer rail, Speed 30 miles an hour.

SCALES { HORIZONTAL, 4 CHAINS TO AN INCH.  
VERTICAL, 40 FEET TO AN INCH.

N<sup>o</sup> 5 \*

