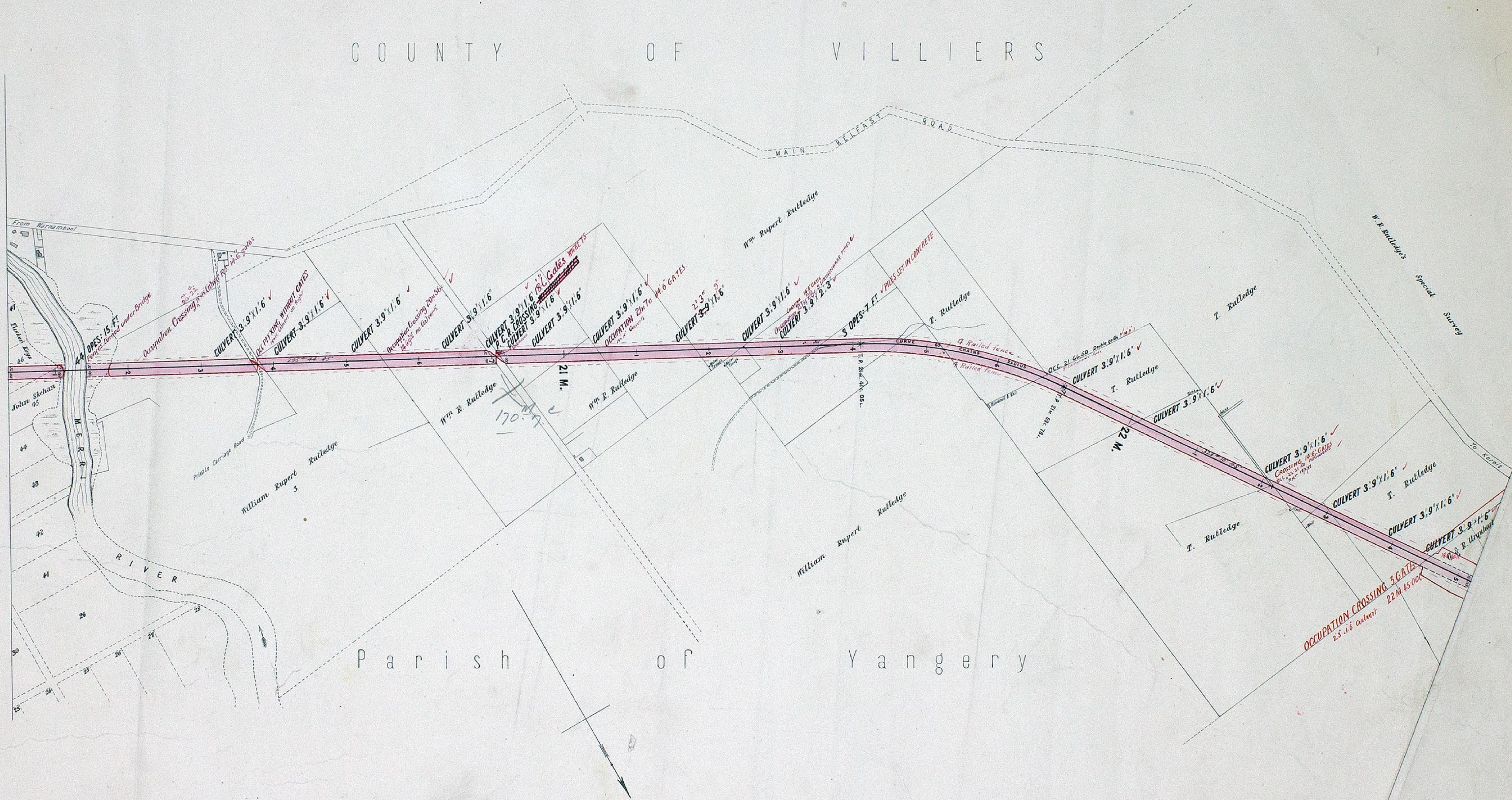


VICTORIAN RAILWAYS, KOROIT AND WARRNAMBOOL LINE.

SCALE. 10 CHAINS TO AN INCH

CONTRACT N^o 2937.
N^o 2.

C O U N T Y O F V I L L I E R S



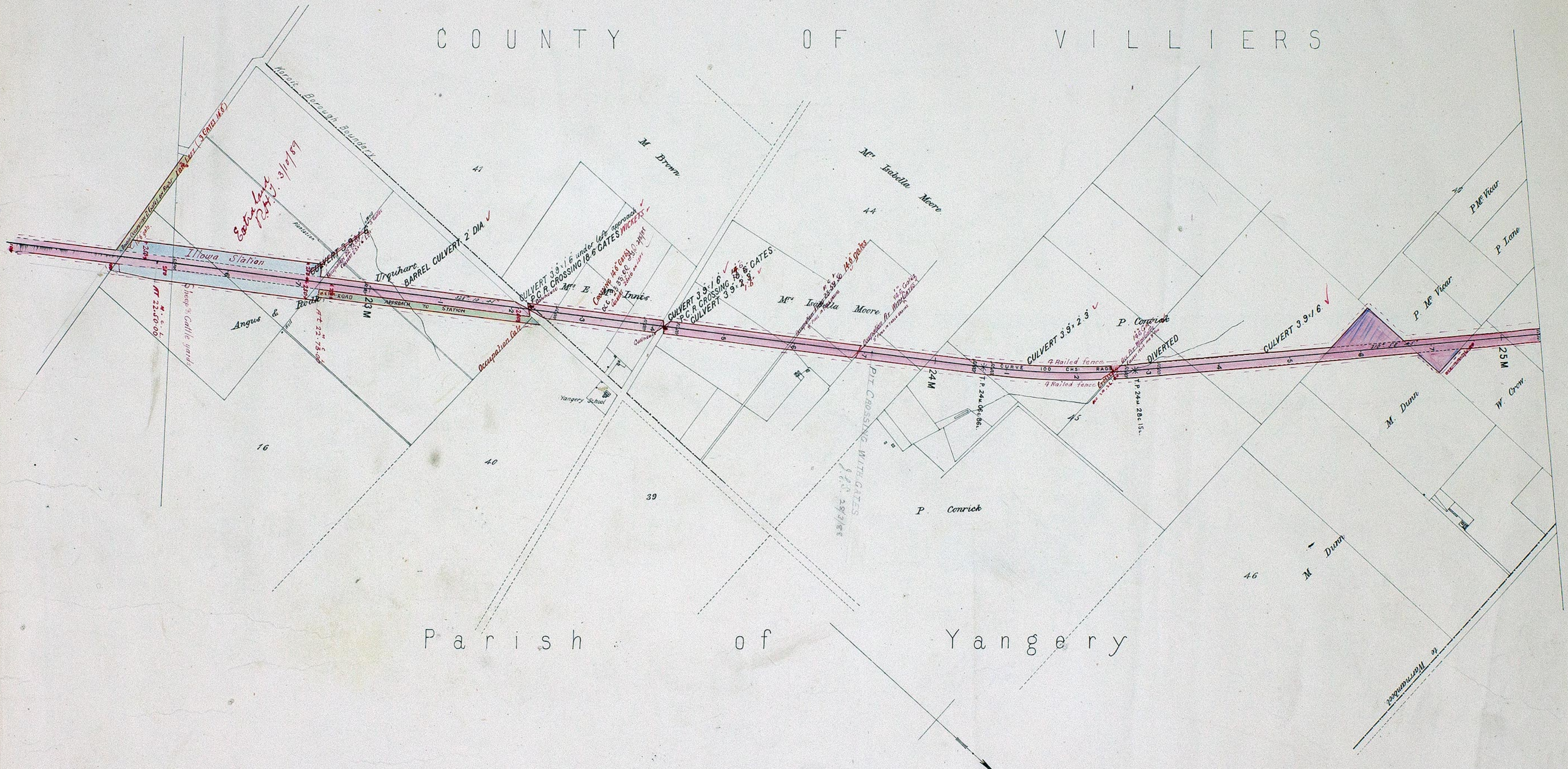
P a r i s h o f Y a n g e r y

VICTORIAN RAILWAYS, KOROIT AND WARRNAMBOOL LINE.

SCALE, 10 CHAINS TO AN INCH

CONTRACT N^o 2937.
N^o 3.

C O U N T Y O F V I L L I E R S



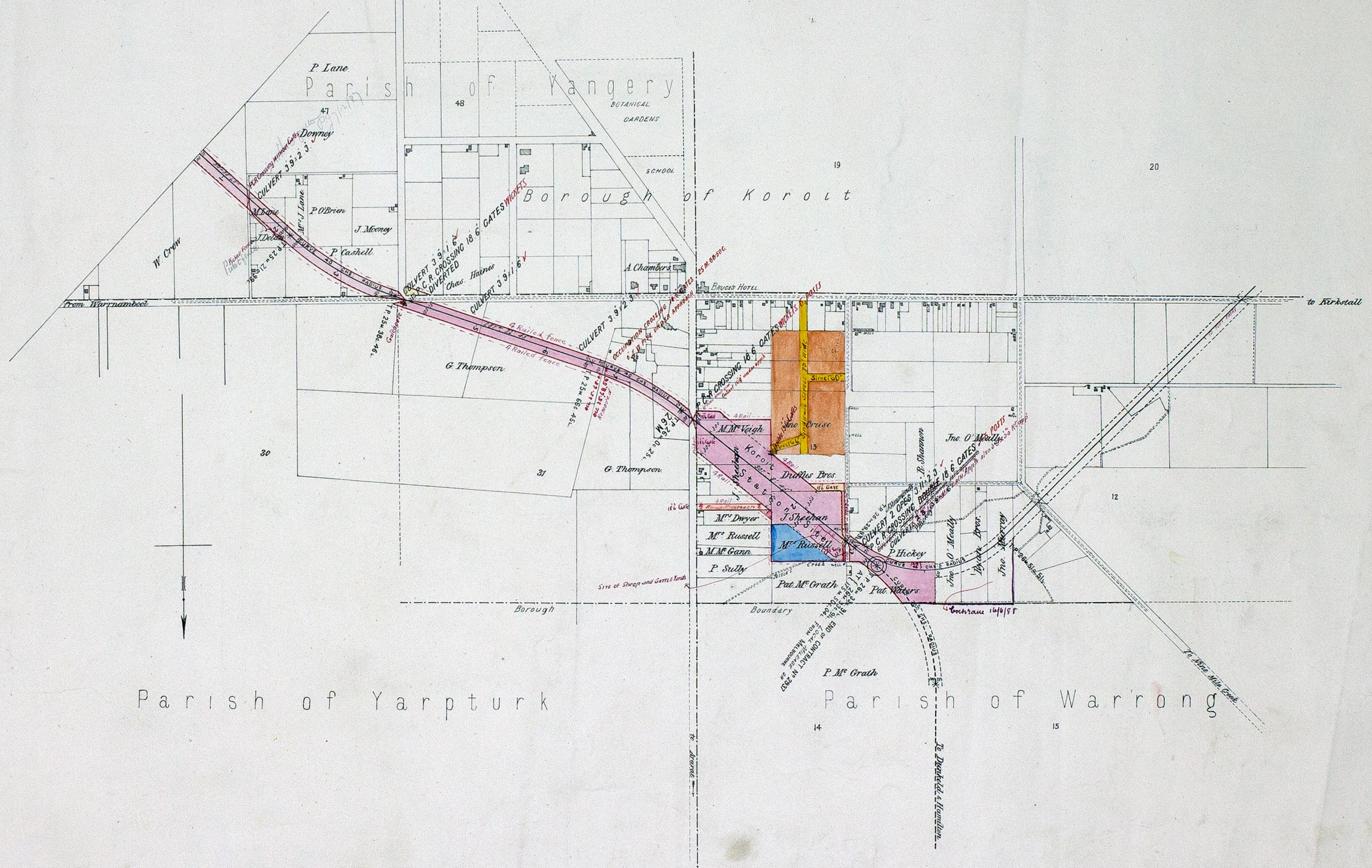
Parish of Yangery

VICTORIAN RAILWAYS, KOROIT AND WARRNAMBOOL LINE.

SCALE. 10 CHAINS TO AN INCH

CONTRACT N^o 2937.
N^o 4.

C O U N T Y O F V I L L I E R S



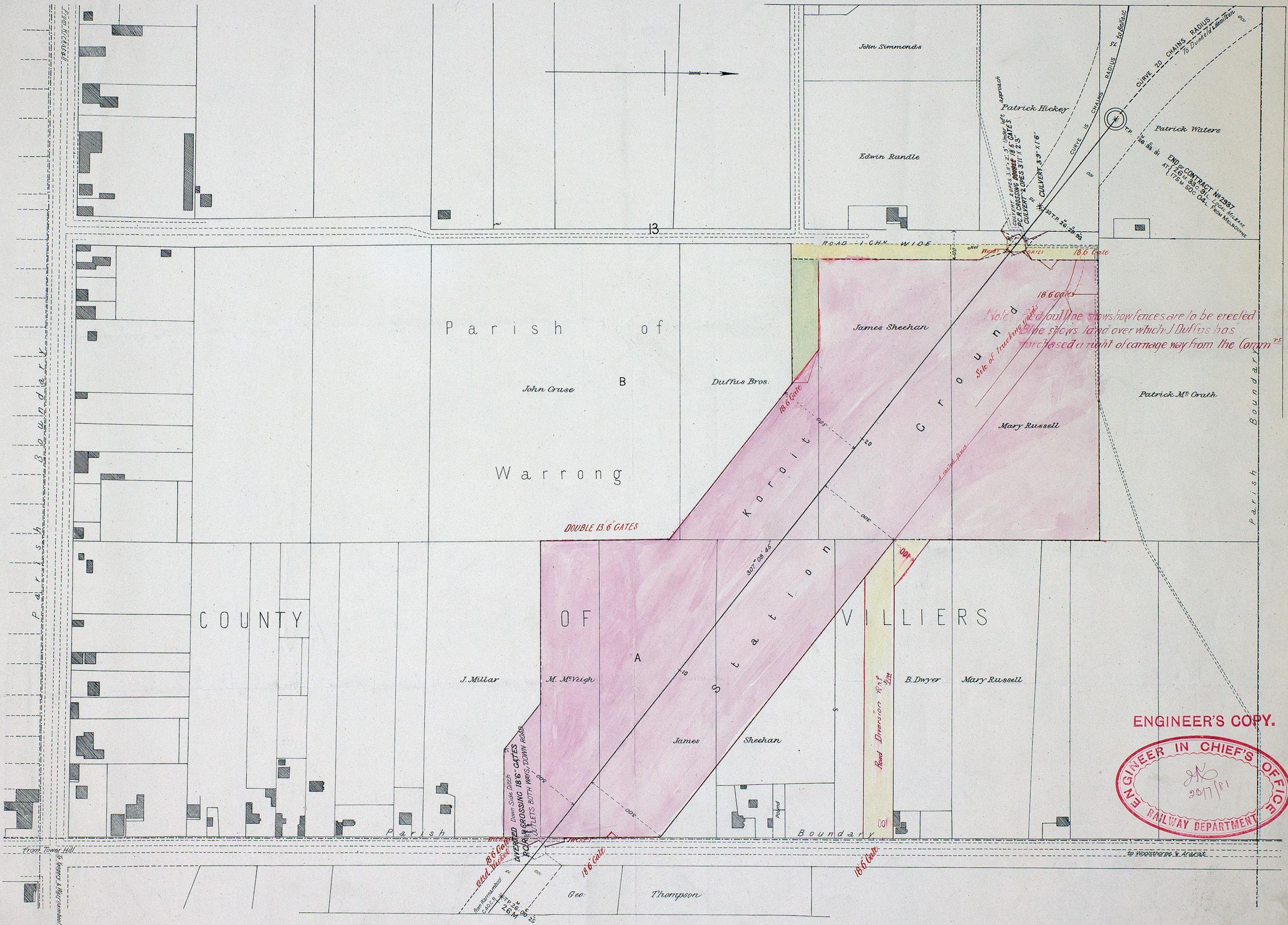
Parish of Yarpturk

Parish of Warrong

VICTORIAN RAILWAYS, KOROIT AND WARRNAMBOOL LINE.

SCALE. 2 CHAINS TO AN INCH

CONTRACT N^o 2937.
N^o 4.*



Note: A dotted line shows how fences are to be erected. The line shows land over which J. Duffus has purchased a right of carriage way from the Com^{rs}.

ENGINEER'S COPY.

 ENGINEER IN CHIEF'S OFFICE
 RAILWAY DEPARTMENT

NOTE - Contractors must form their own judgment as to the nature of the Excavations. Borings and other information shown on these Sections are derived from the Surveyors' notes but are not guaranteed as correct, and the Corporation will not incur any responsibility in respect thereof.

VICTORIAN RAILWAYS, KOROIT AND WARRNAMBOOL LINE.

CONTRACT N^o 2937.
N^o 1.

SCALES: HORIZONTAL 4 CHAINS TO AN INCH.
VERTICAL 40 FEET TO AN INCH.



Revised 27/4/88
That's 1888

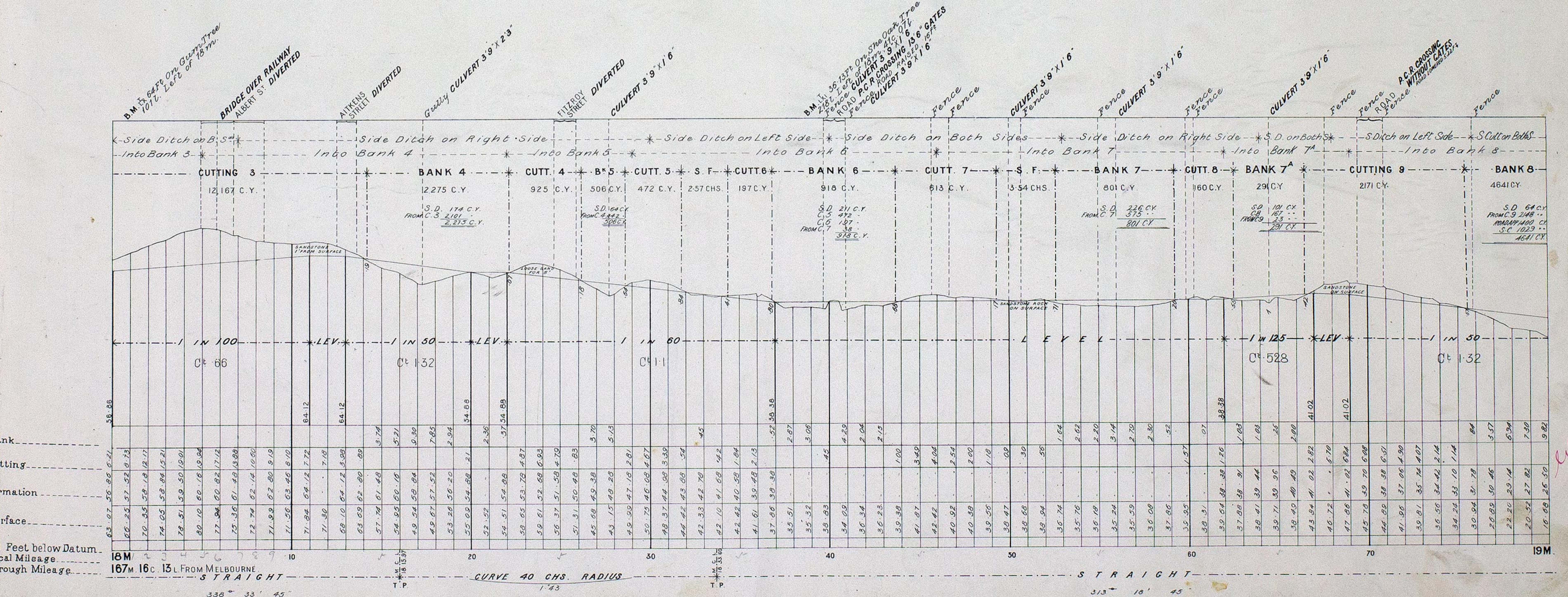
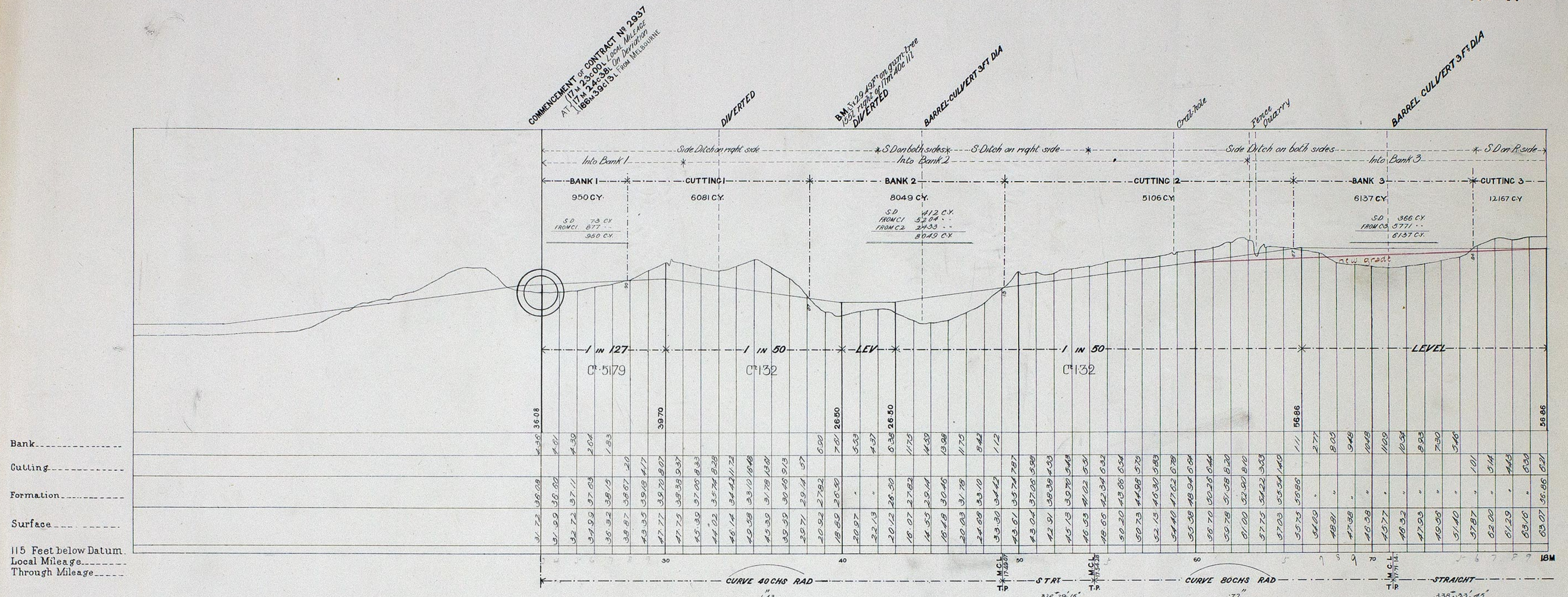
NOTE - Contractors must form their own judgment as to the nature of the Excavations. Borings and other information shown on these Sections are derived from the Surveyors' notes but are not guaranteed as correct, and the Corporation will not incur any responsibility in respect thereof.

The figures under the description of the Curves at the bottom of the Section denote the super-elevation of the outer rail; Speed 30 miles an hour.

VICTORIAN RAILWAYS, KOROIT AND WARRNAMBOOL LINE.

**CONTRACT N° 2937.
N° 1.**

SCALES | HORIZONTAL 4 CHAINS TO AN INCH.
VERTICAL 40 FEET TO AN INCH.



C.P.H. 24.1.19

VICTORIAN RAILWAYS, KOROIT AND WARRNAMBOOL LINE.

CONTRACT N^o 2937.
N^o 1.

NOTE—Contractors must form their own judgment as to the nature of the Excavations, Borings and other information shown on these Sections are derived from the Surveyors' notes but are not guaranteed as correct, and the Corporation will not incur any responsibility in respect thereof.

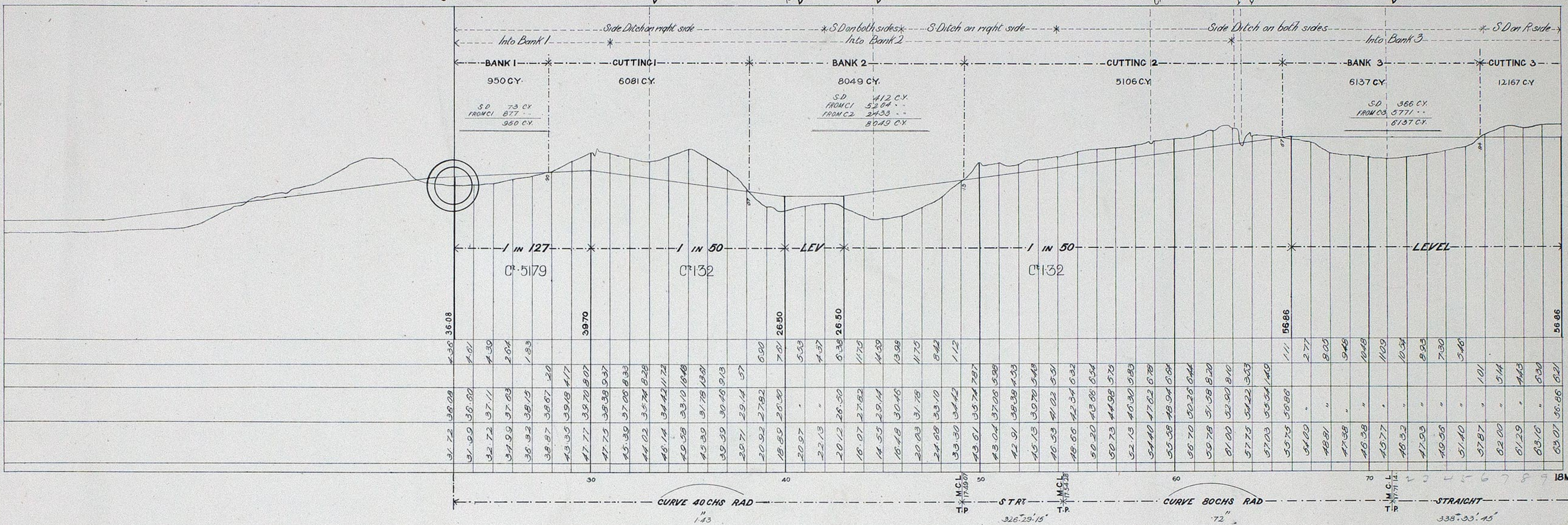
The figures under the description of the Curves at the bottom of the Section denote the super-elevation of the outer rail; Speed 30 miles an hour.

SCALES: HORIZONTAL 4 CHAINS TO AN INCH.
VERTICAL 40 FEET TO AN INCH.

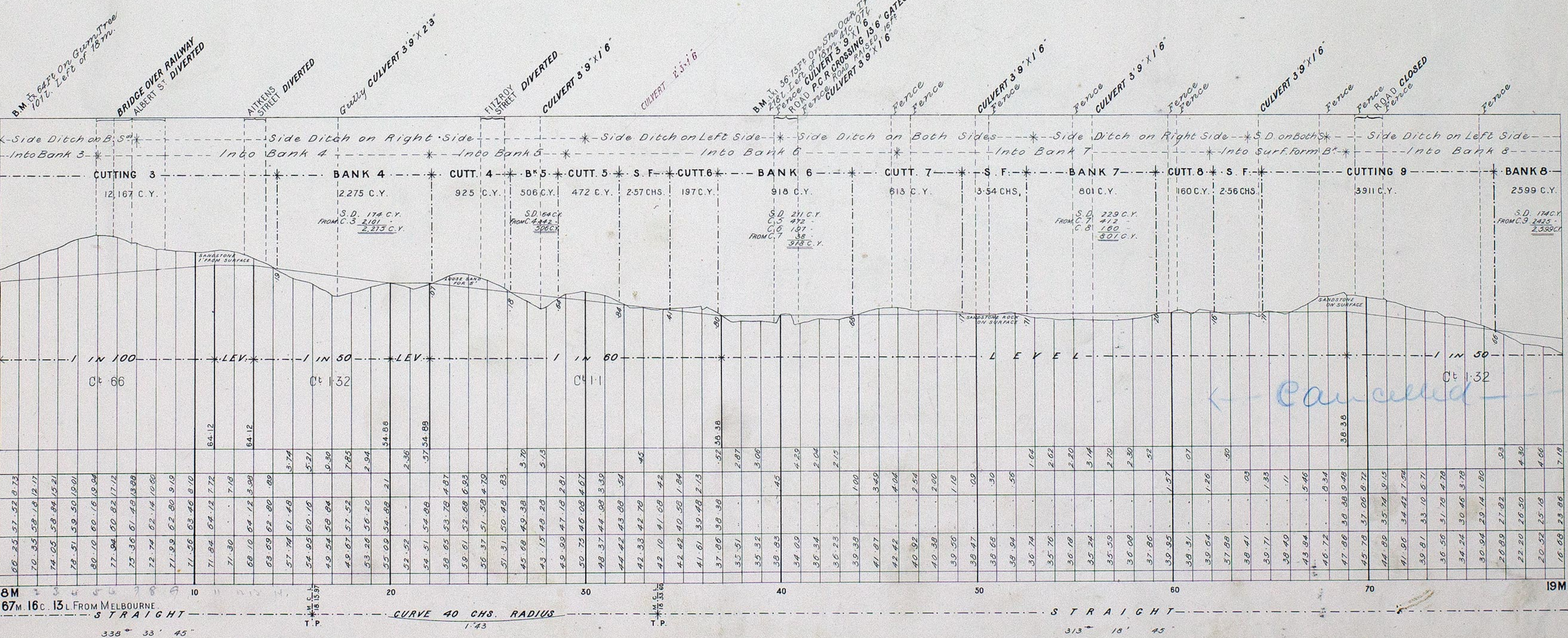
COMMENCEMENT OF CONTRACT N^o 2937
AT 177 M 23.500 L. ON DISTANCE
(167 M 393.5) FROM MELBOURNE

B.M. 529.457 From Oak Tree
100' from top of 177 400.77
DIVERTED

BARREL CULVERT 3 FT DIA



Bank
Cutting
Formation
Surface
115 Feet below Datum
Local Mileage
Through Mileage



Bank
Cutting
Formation
Surface
115 Feet below Datum
Local Mileage
Through Mileage

Cancelled

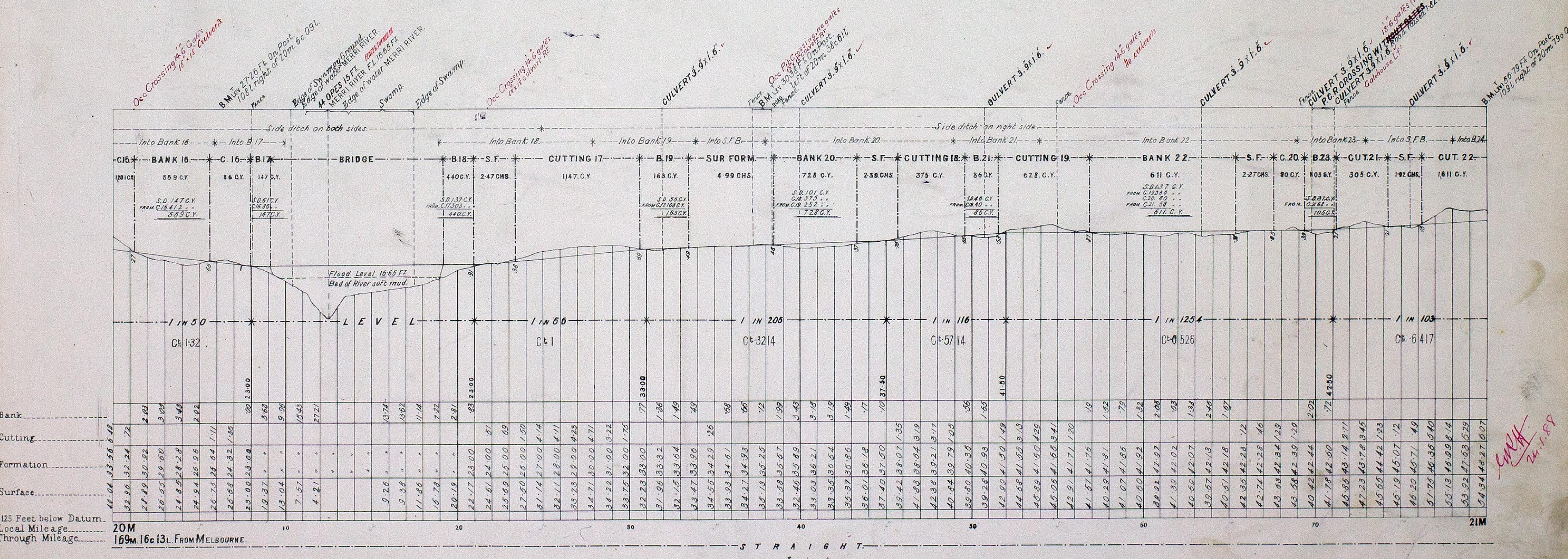
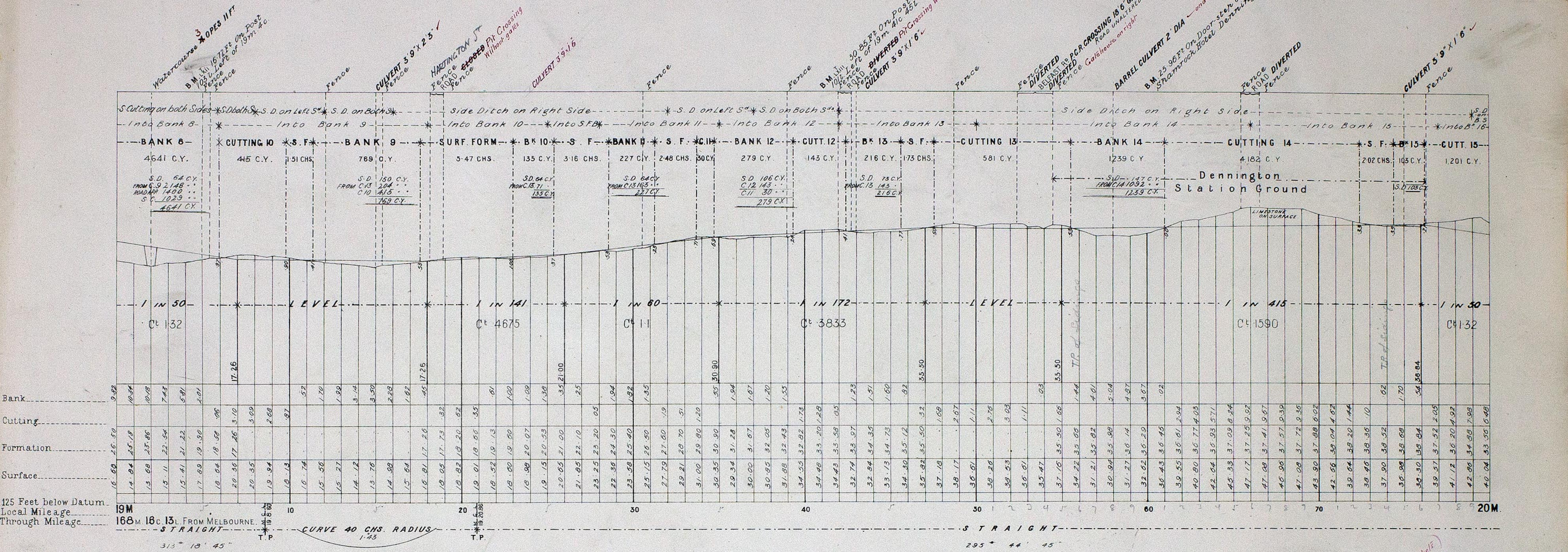
VICTORIAN RAILWAYS, KOROIT AND WARRNAMBOOL LINE.

CONTRACT N° 2937.
N° 2.

NOTE - Contractors must form their own judgment as to the nature of the excavations, Berings and other information shown on these Sections are derived from the Surveyors' notes but are not guaranteed as correct, and the Corporation will not incur any responsibility in respect thereof.

The Figures under the description of the Curves at the bottom of the Section denote the super-elevation of the outer rail; Speed 30 miles an hour.

SCALES: (HORIZONTAL 4 CHAINS TO AN INCH.
VERTICAL 40 FEET TO AN INCH.



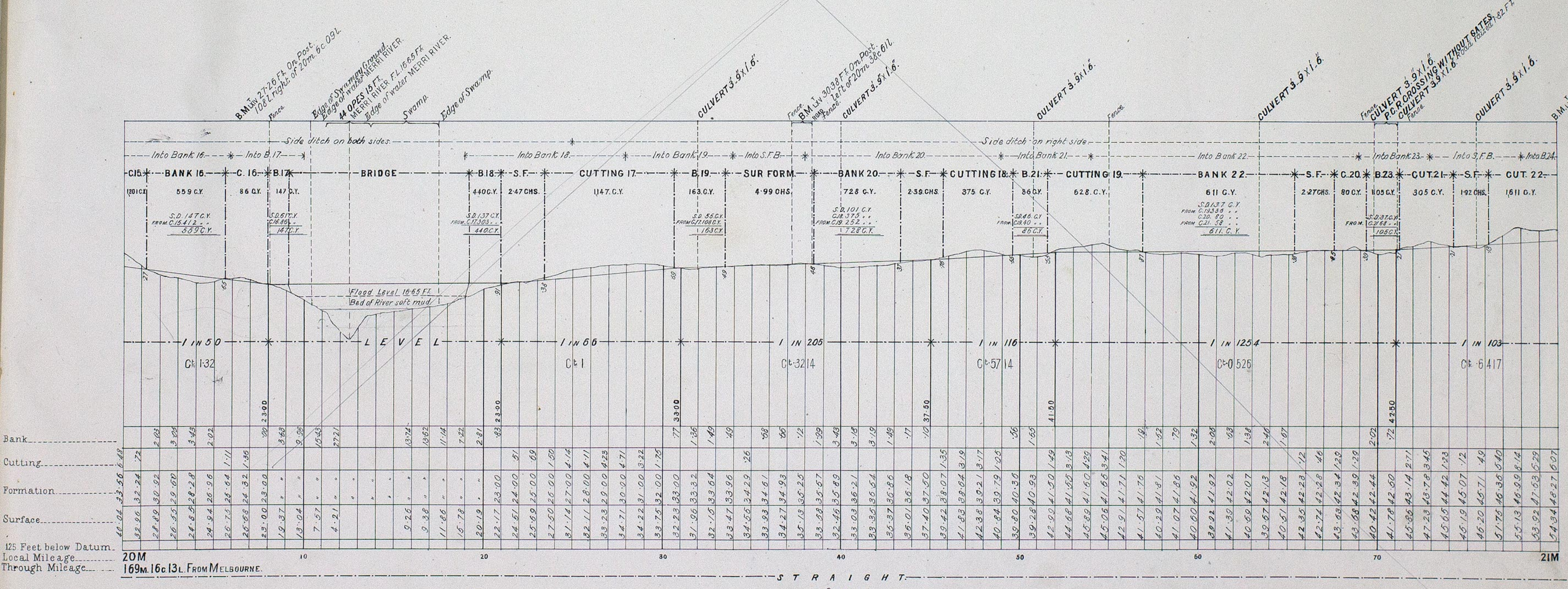
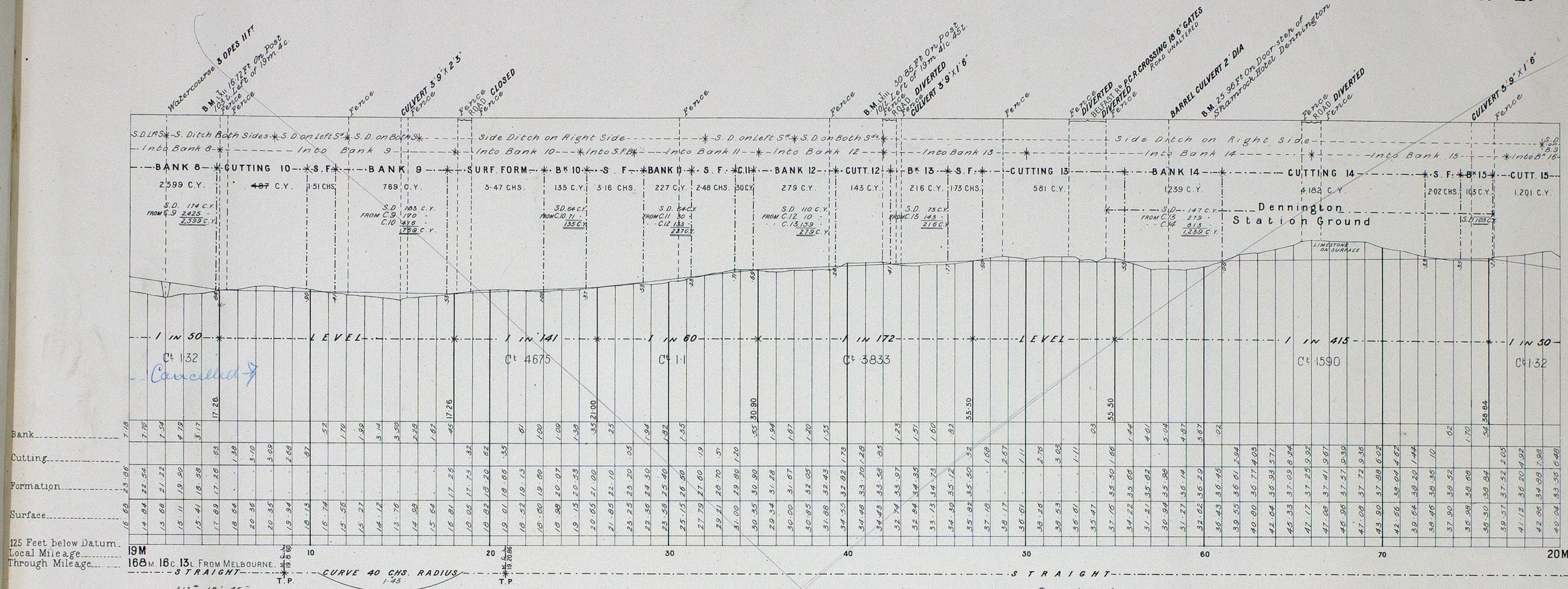
VICTORIAN RAILWAYS, KOROIT AND WARRNAMBOOL LINE.

**CONTRACT NO 2937.
NO 2.**

NOTE—Contractors must form their own judgment as to the nature of the Excavations. Borings and other information shown on these Sections are derived from the Surveyors' notes but are not guaranteed as correct, and the Corporation will not incur any responsibility in respect thereof.

The Figures under the description of the Curves at the bottom of the Section denote the super-elevation of the outer rail; Speed 30 miles an hour.

SCALES (HORIZONTAL 4 CHAINS TO AN INCH.
VERTICAL 40 FEET TO AN INCH.)



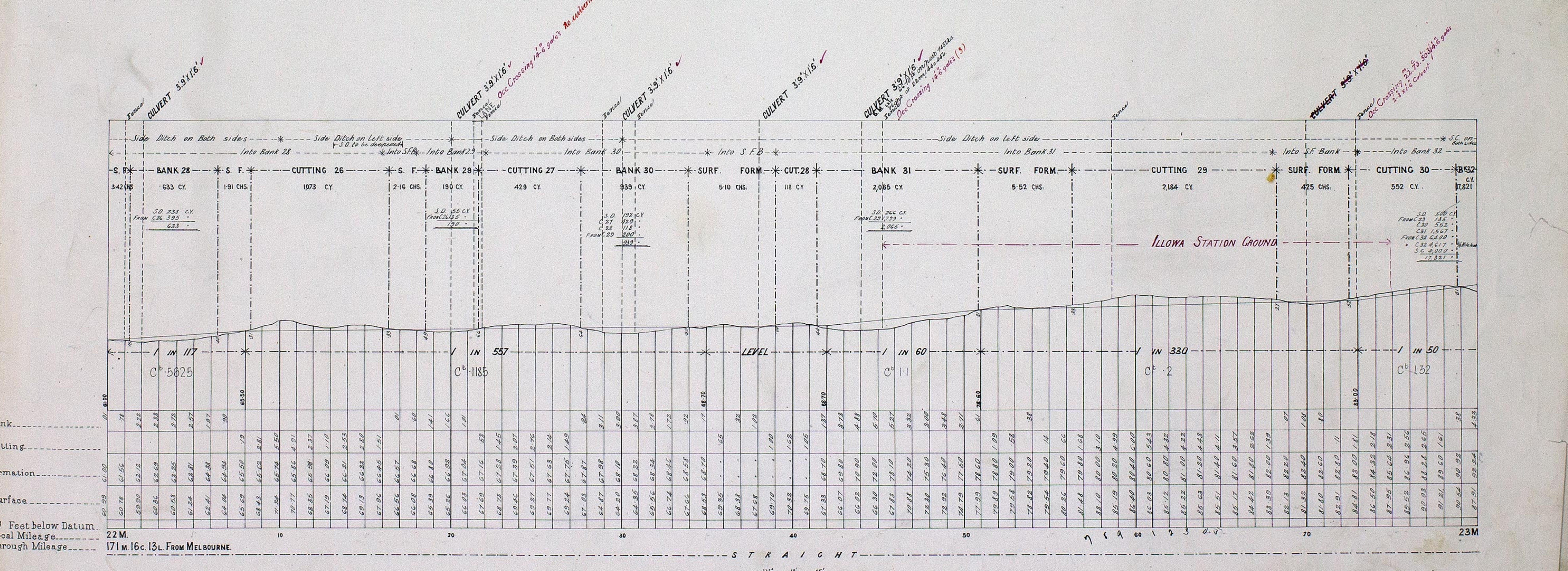
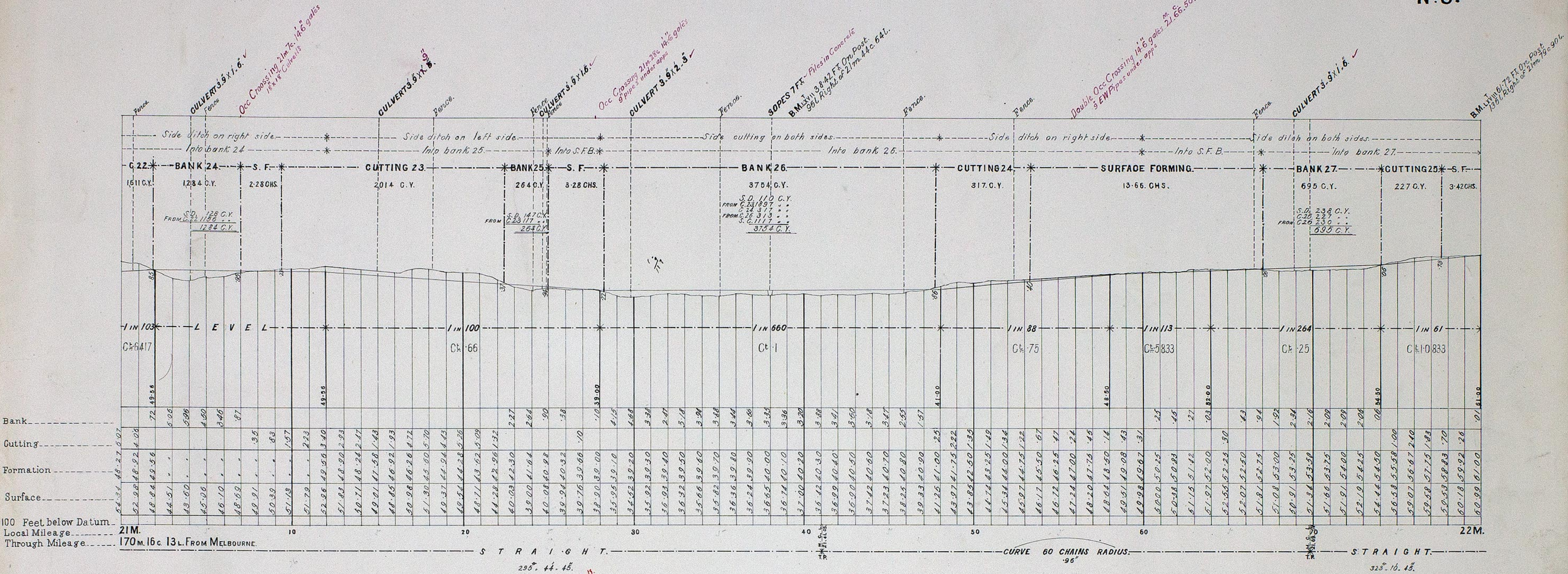
NOTE: Contractors must form their own judgment as to the nature of the Excavations. Borings and other information shown on these Sections are derived from the Surveyors' notes but are not guaranteed as correct, and the Corporation will not incur any responsibility in respect thereof.

The figures under the description of the Curves at the bottom of the Section denote the super-elevation of the outer rail; Speed 30 miles an hour.

VICTORIAN RAILWAYS, KOROIT AND WARRNAMBOOL LINE.

SCALES: HORIZONTAL 4 CHAINS TO AN INCH.
VERTICAL 40 FEET TO AN INCH.

CONTRACT N^o 2937.
N^o 3.



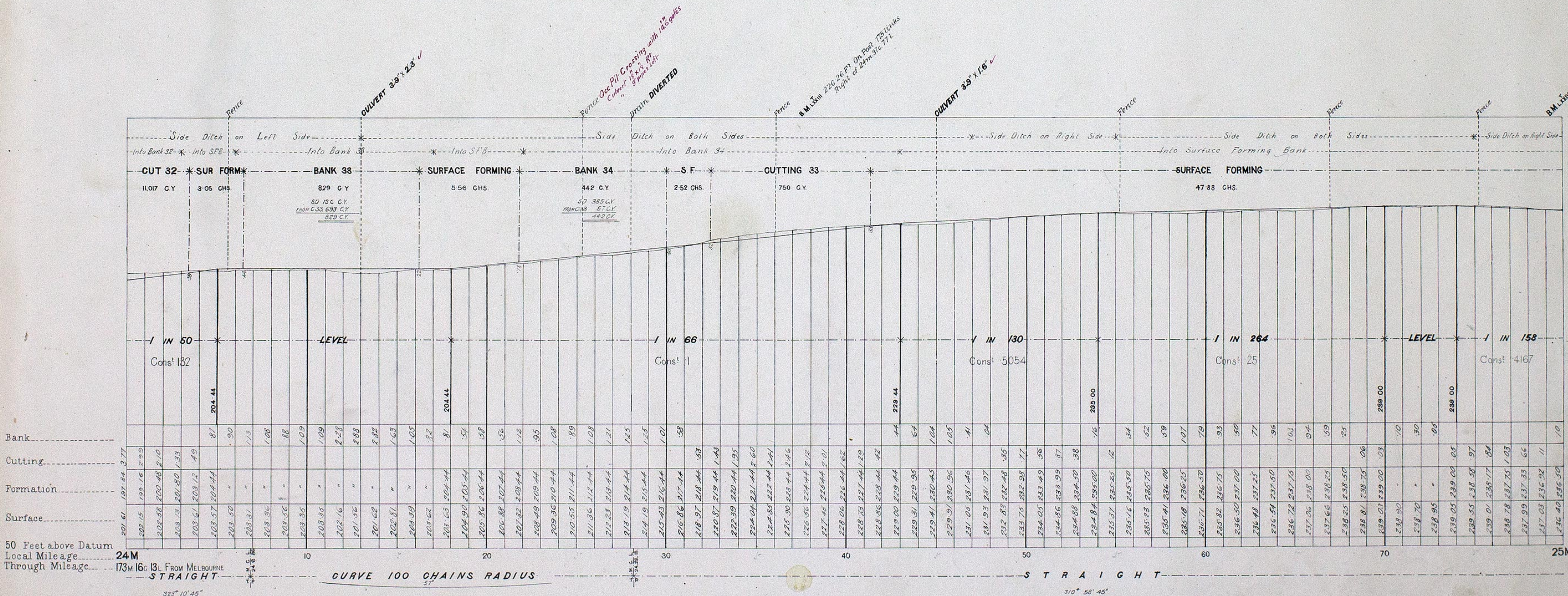
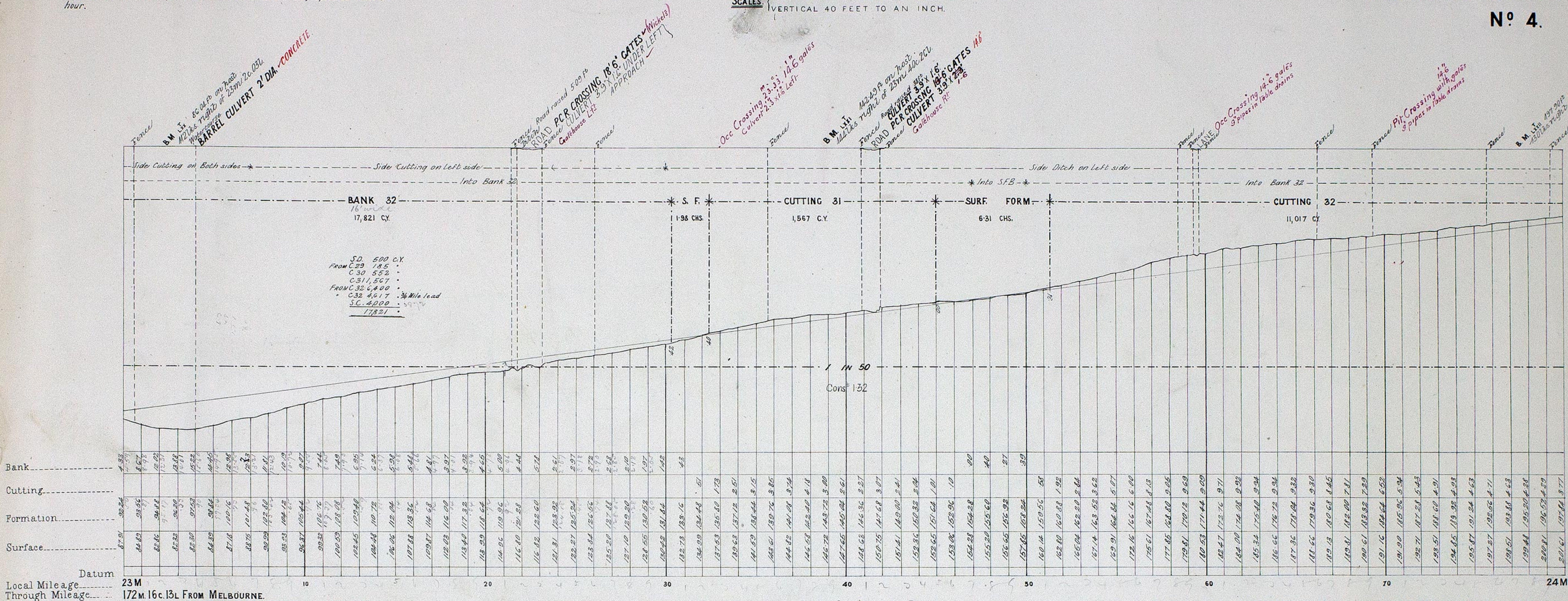
VICTORIAN RAILWAYS, KOROIT AND WARRNAMBOOL LINE.

**CONTRACT N° 2937.
N° 4.**

NOTE—Contractors must form their own judgment as to the nature of the Excavations. Borings and other information shown on these Sections are derived from the Surveyors' notes but are not guaranteed as correct, and the Corporation will not incur any responsibility in respect thereof.

The figures under the description of the Curves at the bottom of the Section denote the super-elevation of the outer rail; Speed 30 miles an hour.

SCALES (HORIZONTAL 4 CHAINS TO AN INCH.
VERTICAL 40 FEET TO AN INCH.



NOTE - Contractors must form their own judgment as to the nature of the Excavations, Borings and other information shown on these Sections are derived from the Surveyors' notes but are not guaranteed as correct, and the Corporation will not incur any responsibility in respect thereof.

The figures under the description of the Curves at the bottom of the Section denote the super-elevation of the outer rail; Speed 30 miles an hour.

VICTORIAN RAILWAYS, KOROIT AND WARRNAMBOOL LINE

SCALES: (HORIZONTAL 4 CHAINS TO AN INCH.
VERTICAL 40 FEET TO AN INCH.

CONTRACT N^o 2937.

N^o 5.

