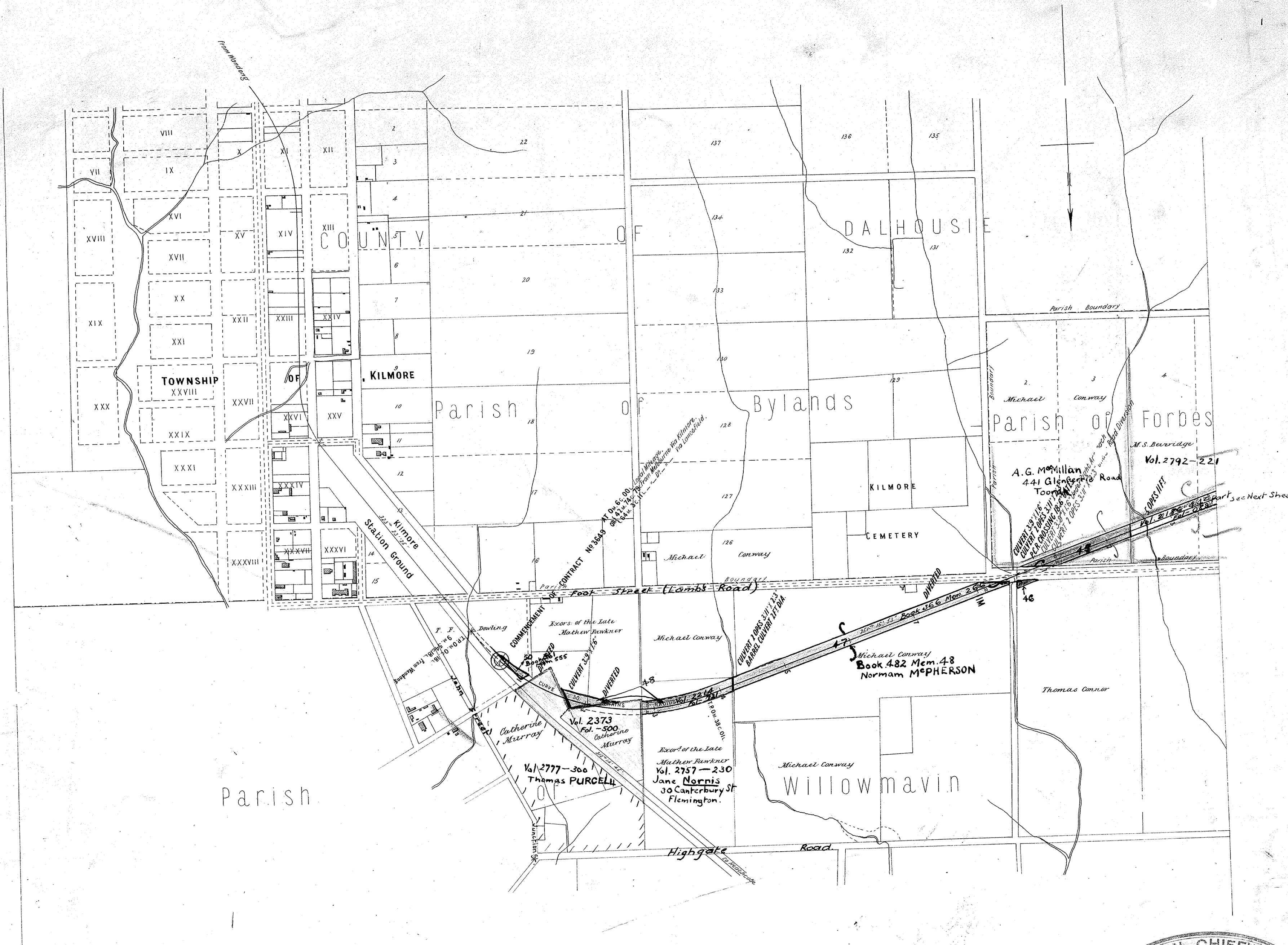


VICTORIAN RAILWAYS, LANCEFIELD AND KILMORE LINE.

SCALE: 10 CHAINS TO AN INCH

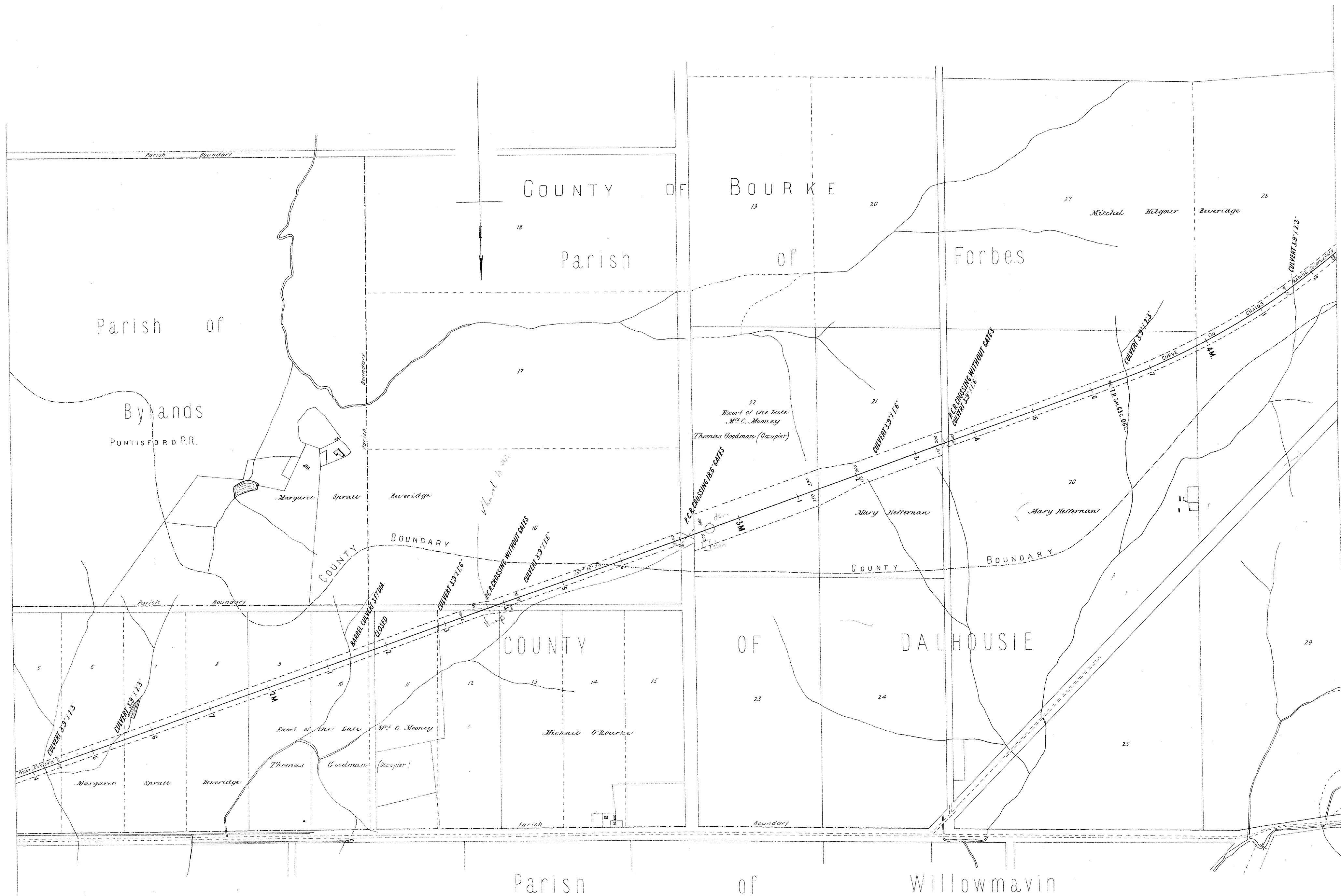
CONTRACT N^o 3649
N^o 1



VICTORIAN RAILWAYS, LANCEFIELD AND KILMORE LINE.

SCALE. 10 CHAINS TO AN INCH

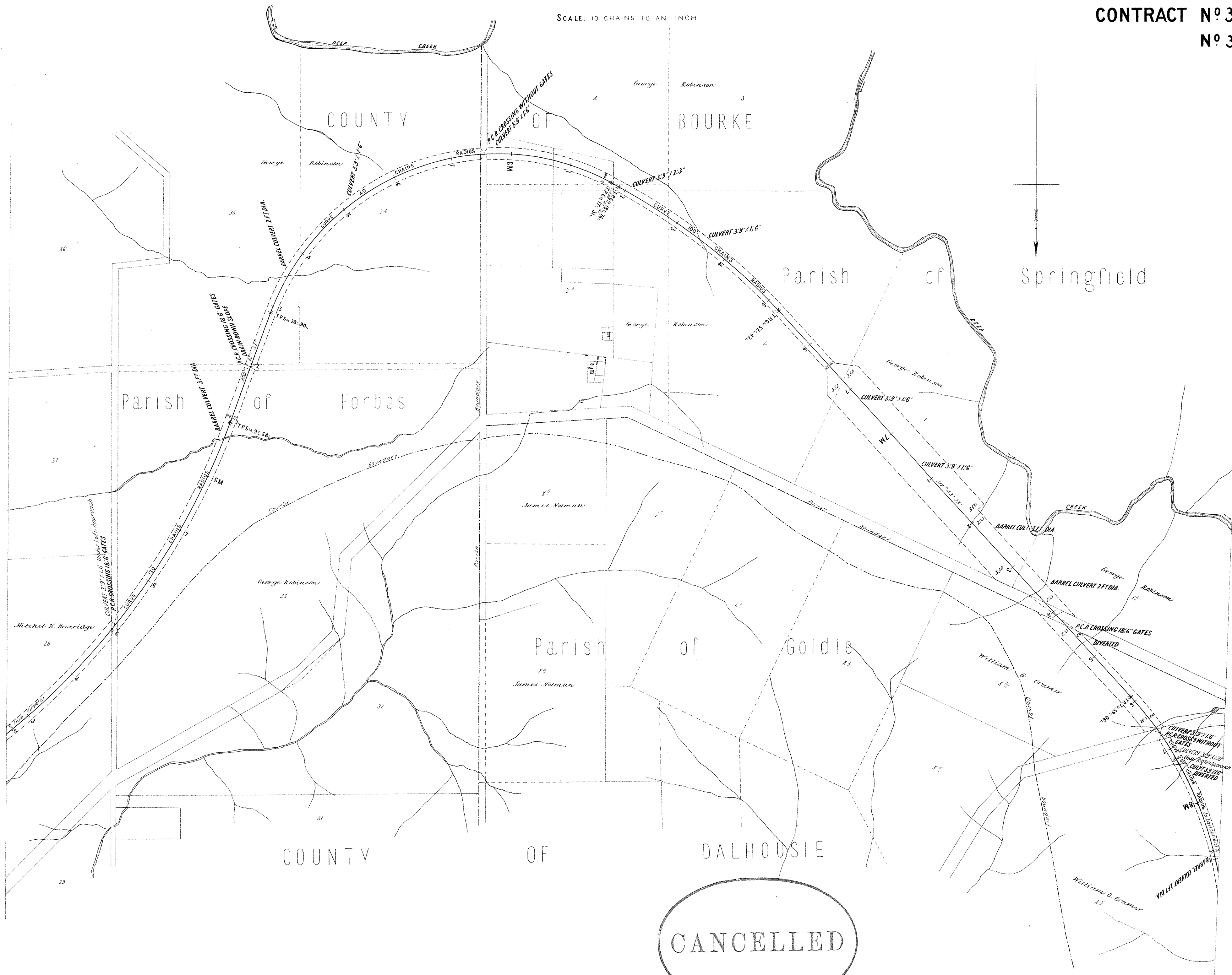
CONTRACT N^o 3649
N^o 2



VICTORIAN RAILWAYS, LANCEFIELD AND KILMORE LINE .

CONTRACT N^o 3649
N^o 3

SCALE: 10 CHAINS TO AN INCH

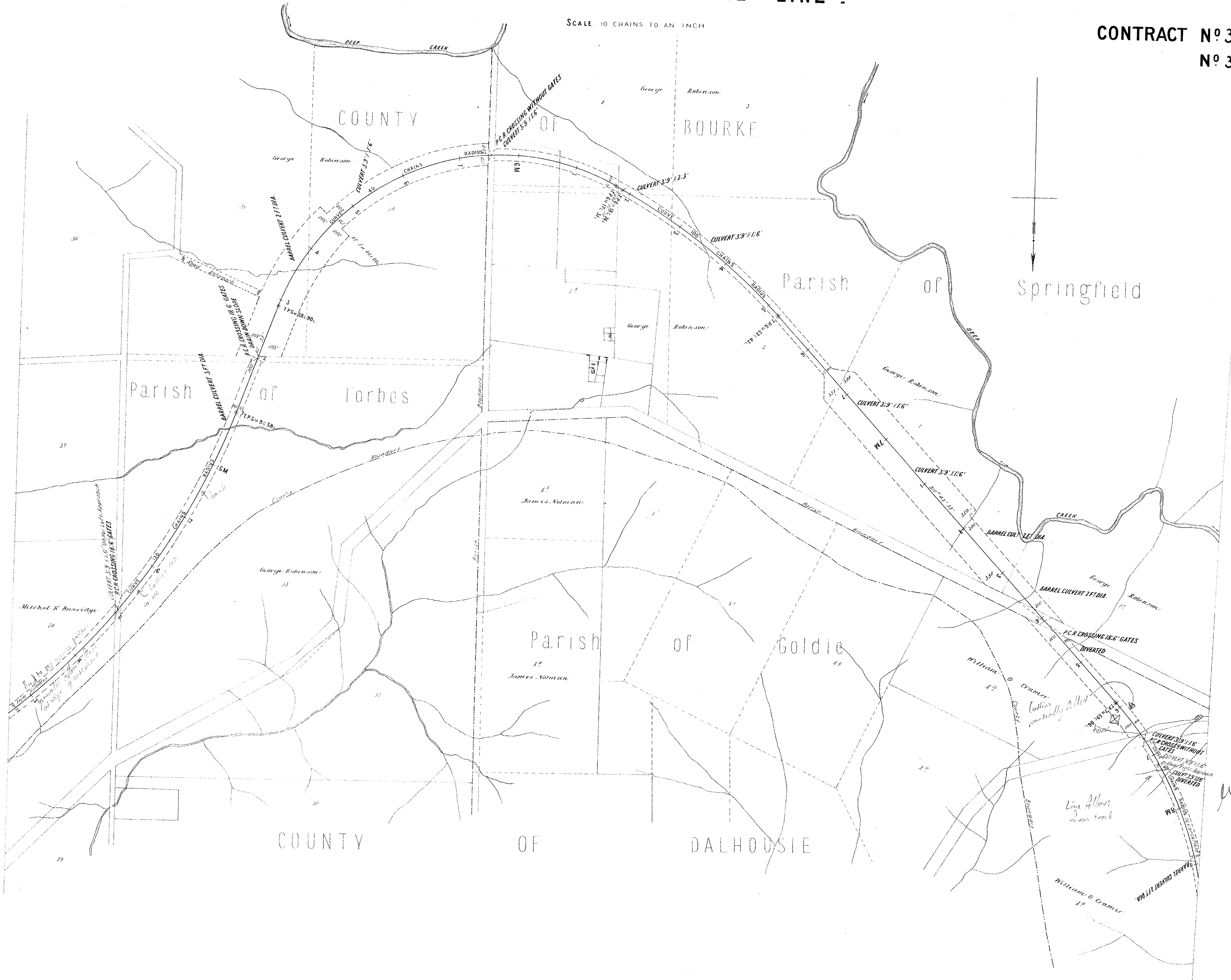


CANCELLED

VICTORIAN RAILWAYS, LANCEFIELD AND KILMORE LINE.

SCALE, 10 CHAINS TO AN INCH

CONTRACT N^o 3649
N^o 3⁺



W. J. F.

VICTORIAN RAILWAYS, LANCEFIELD AND KILMORE LINE

CONTRACT N^o 3649
N^o 4



CANCELLED

Note Error of 10 ins in excess in chainage between 8m.62c and 8m.63c.
From 8m.63c add 10 ins to Local Mileage to get true Mileage.

VICTORIAN RAILWAYS, LANCEFIELD AND KILMORE LINE

CONTRACT N^o 3649
N^o 4 *



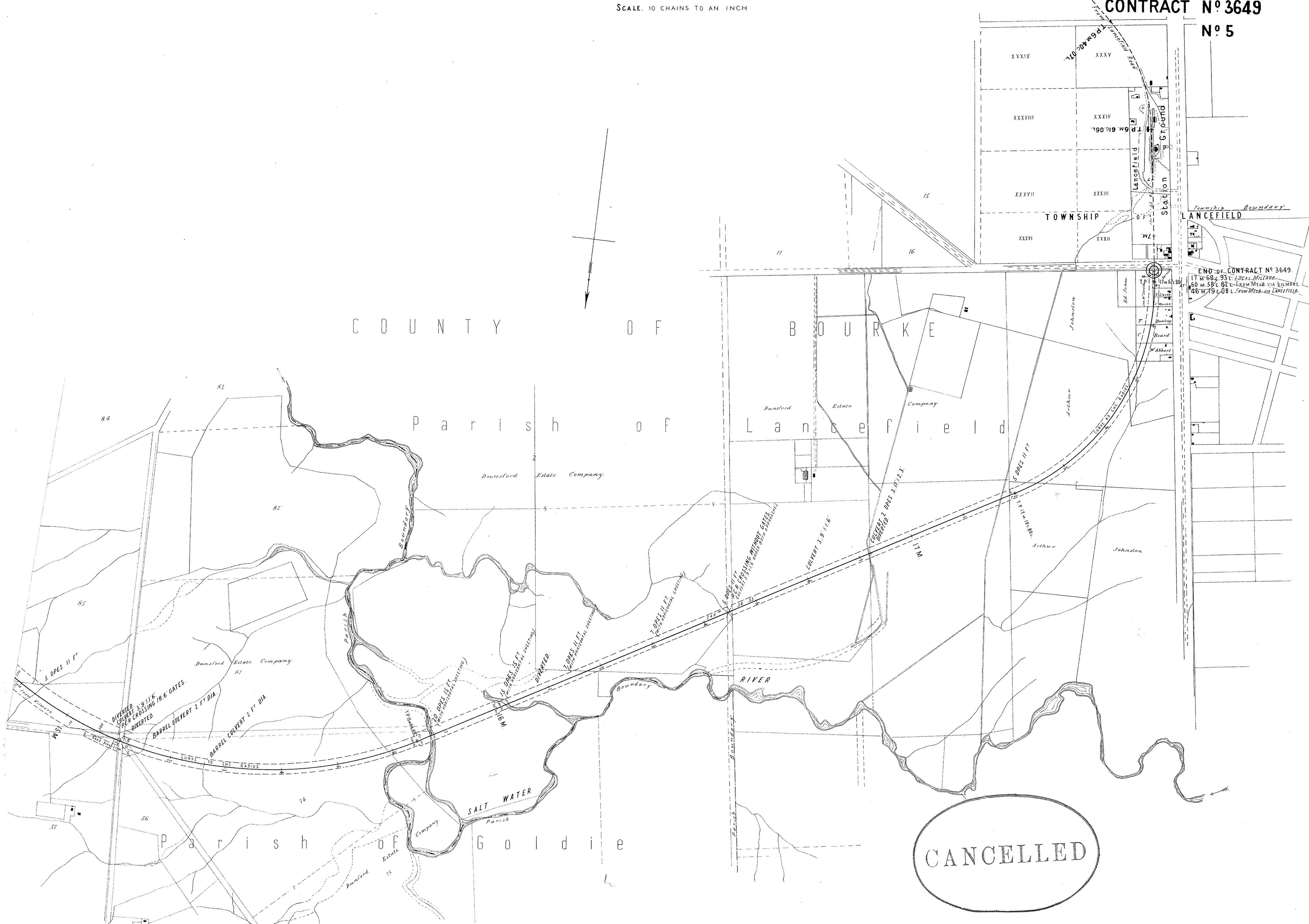
Note Error of 10.15 in excess in chainage between 8+62c and 8+63c.
From 8+55c add 10.15 to Local Mileage to get true Mileage.

W.W.
1385

VICTORIAN RAILWAYS, LANCEFIELD AND KILMORE LINE.

SCALE, 10 CHAINS TO AN INCH

**CONTRACT N^o 3649
N^o 5**



END OF CONTRACT N^o 3649
17 m 69.93 LOCAL MILEAGE
60 m 59.82 LOCAL MILEAGE
46 m 19.08 LOCAL MILEAGE

CANCELLED

Note Error of 10 ins in excess in chaining between 8m 62c and 8m 65c.
From 8m 65c. add 10 ins to Local Mileage to get true Mileage.

VICTORIAN RAILWAYS, LANCEFIELD AND KILMORE LINE.

SCALE: 10 CHAINS TO AN INCH

**CONTRACT N° 3649
N° 5⁺**



END OF CONTRACT N° 3649.
IT M 59.2.33 L. LOCAL MILEAGE
60 M 38.2.82 L. FROM MELB. VIA KILMORE
146 M 19.0.08 L. FROM MELB. VIA LANCEFIELD.

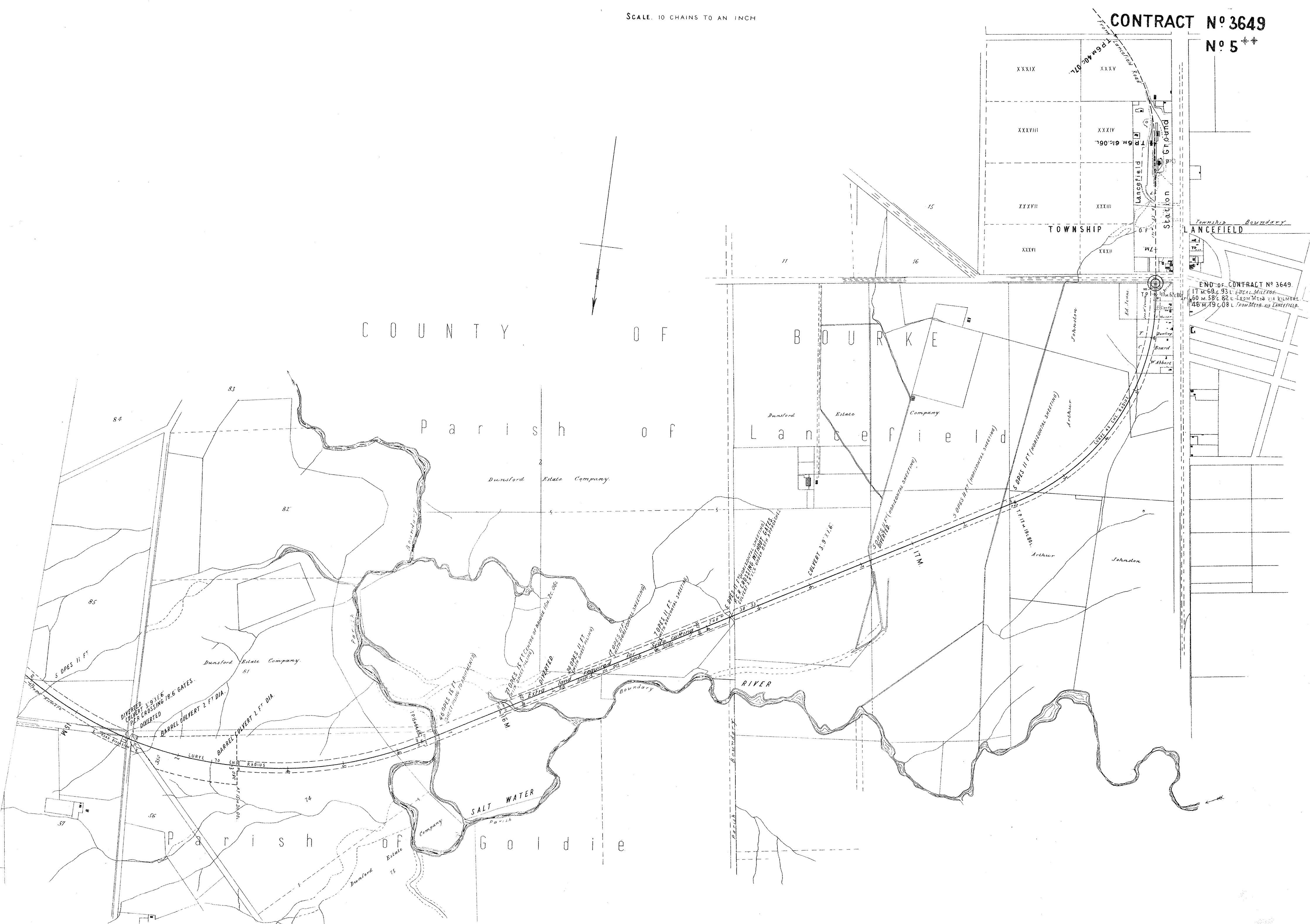
W. J. W.
13. 8. 89

*Note Error of Bars in excess in chaining between 8m 62c and 8m 63c.
From 8m 63c. add Bars to Local Mileage to get true Mileage.*

VICTORIAN RAILWAYS, LANCEFIELD AND KILMORE LINE .

SCALE. 10 CHAINS TO AN INCH

**CONTRACT N° 3649
N° 5****



END OF CONTRACT N° 3649.
17 M. 68 L. 93 L. LOCAL MILEAGE.
140 M. 58 L. 82 L. FROM MELB. VIA KILMORE.
146 M. 19 L. 08 L. FROM MELB. VIA LANCEFIELD.

Note Error of 10 lvs in excess in chaining between 8m 62c and 8m 63c.
From 8m 63c. add 10 lvs to Local Mileage to get true Mileage.

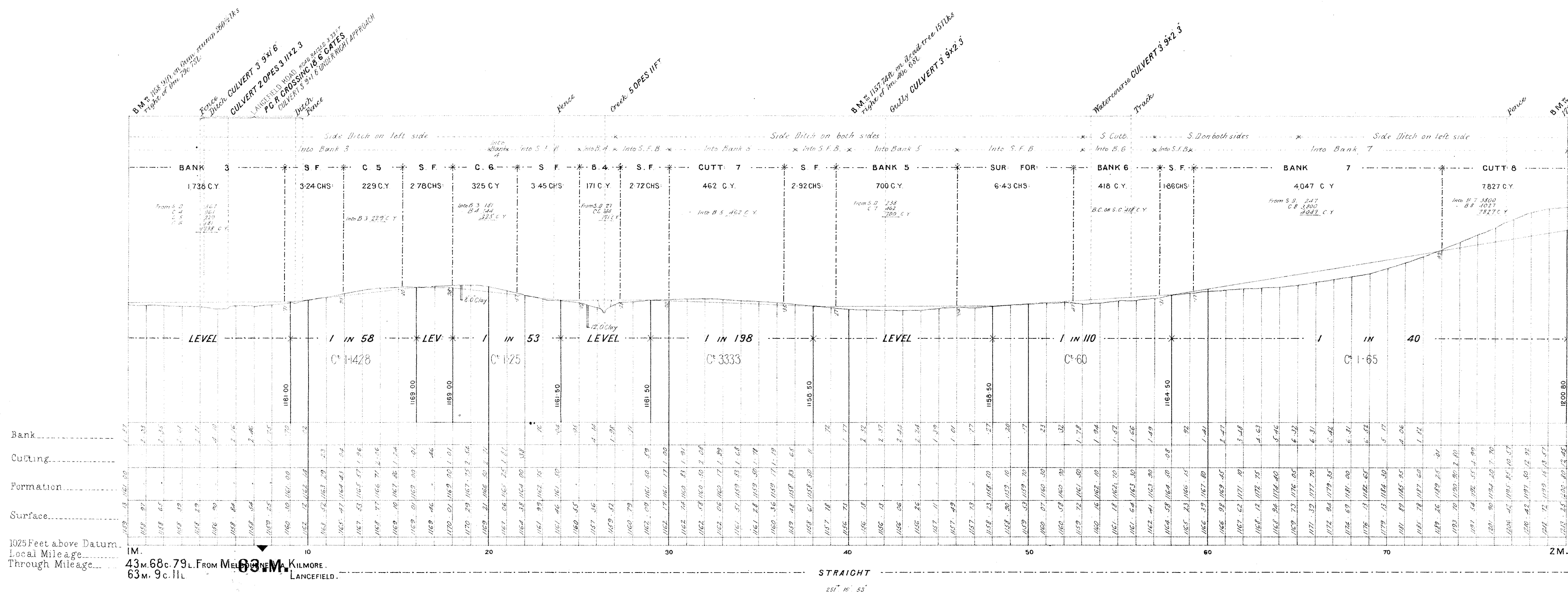
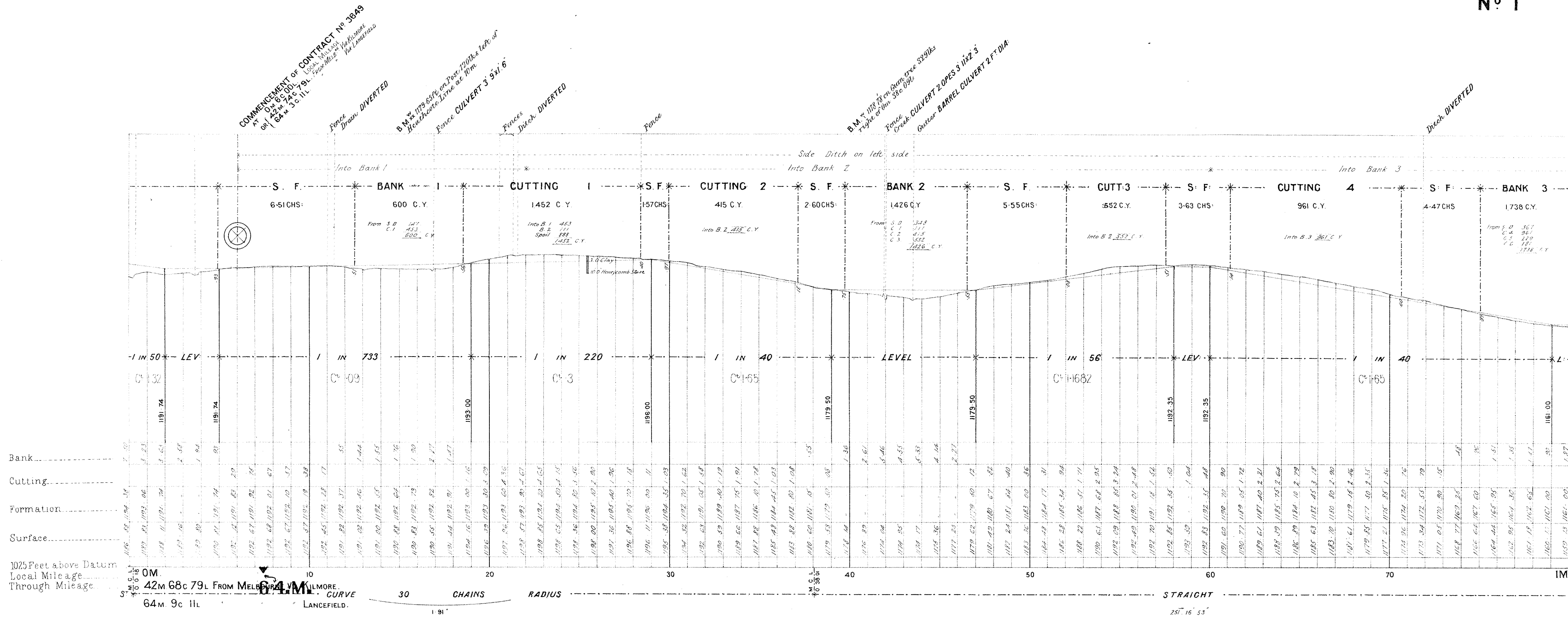
NOTE - Contractors must form their own judgment as to the nature of the Excavations, Berings and other information shown on these Sections are derived from the Surveyors notes but are not guaranteed as correct, and the Corporation will not incur any responsibility in respect thereof.

The Figures under the description of the Curves at the bottom of the Section denote the super-elevation of the outer rail; Speed 30 miles an hour.

VICTORIAN RAILWAYS, LANCEFIELD AND KILMORE LINE

SCALES: HORIZONTAL 4 CHAINS TO AN INCH.
VERTICAL 40 FEET TO AN INCH.

CONTRACT N^o 3649
N^o 1



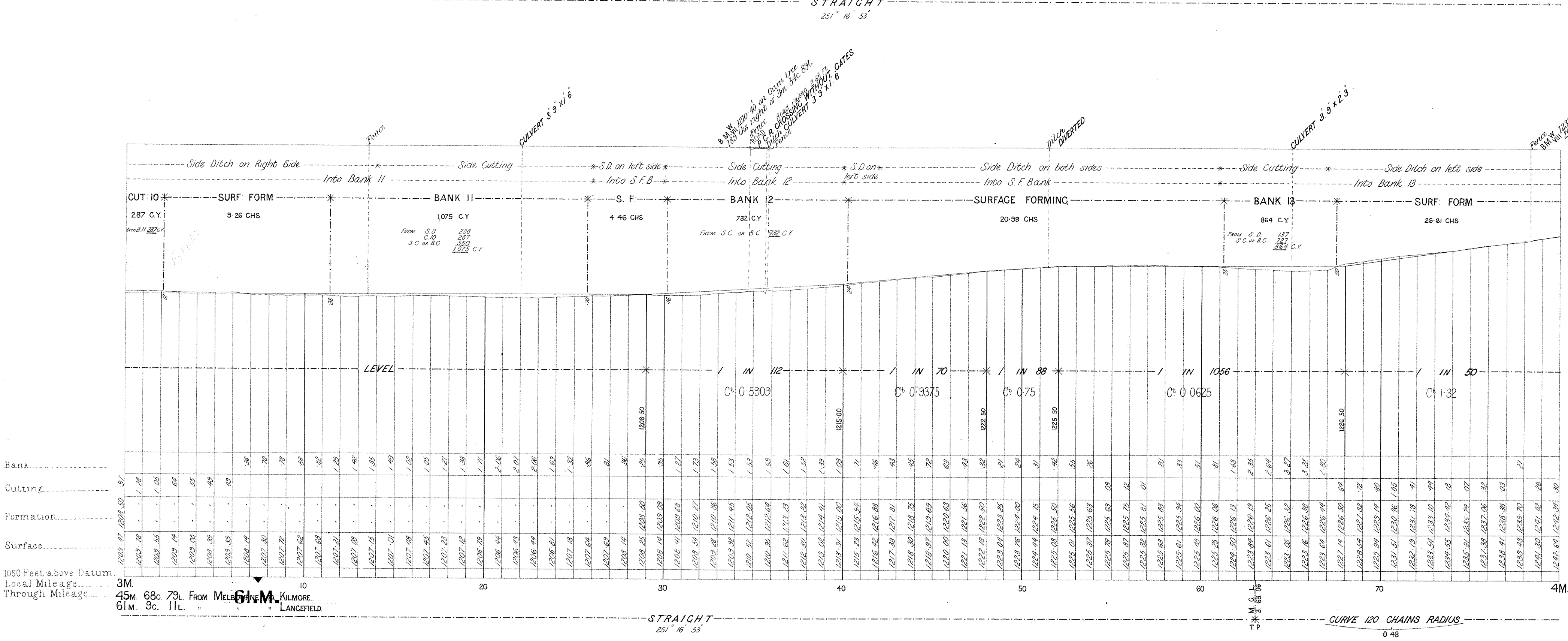
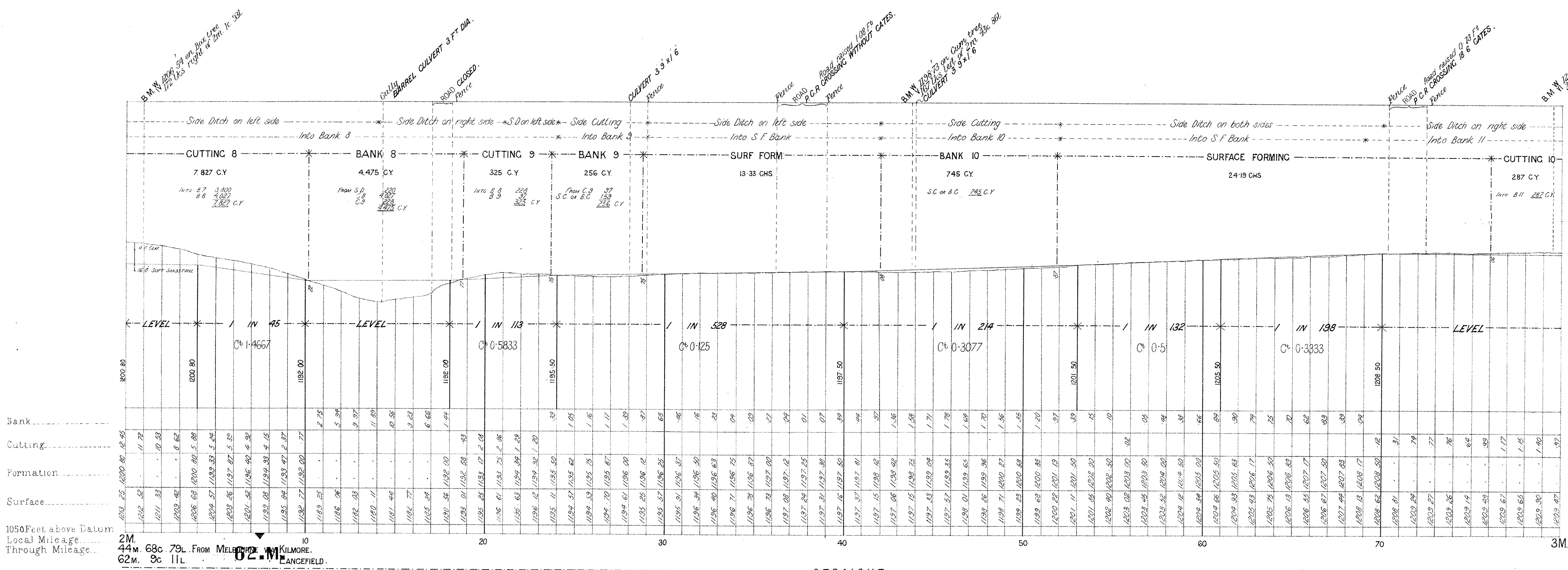
NOTE: Contractors must form their own judgment as to the nature of the Excavations. Bearings and other information shown on these Sections are derived from the Surveyors' notes but are not guaranteed as correct, and the Corporation will not incur any responsibility in respect thereof.

The figures under the description of the Curves at the bottom of the Section denote the super-elevation of the outer rail; Speed 30 miles an hour.

VICTORIAN RAILWAYS, LANCEFIELD AND KILMORE LINE.

SCALES: (HORIZONTAL 4 CHAINS TO AN INCH.
VERTICAL 40 FEET TO AN INCH.

**CONTRACT N^o 3649
N^o 2**



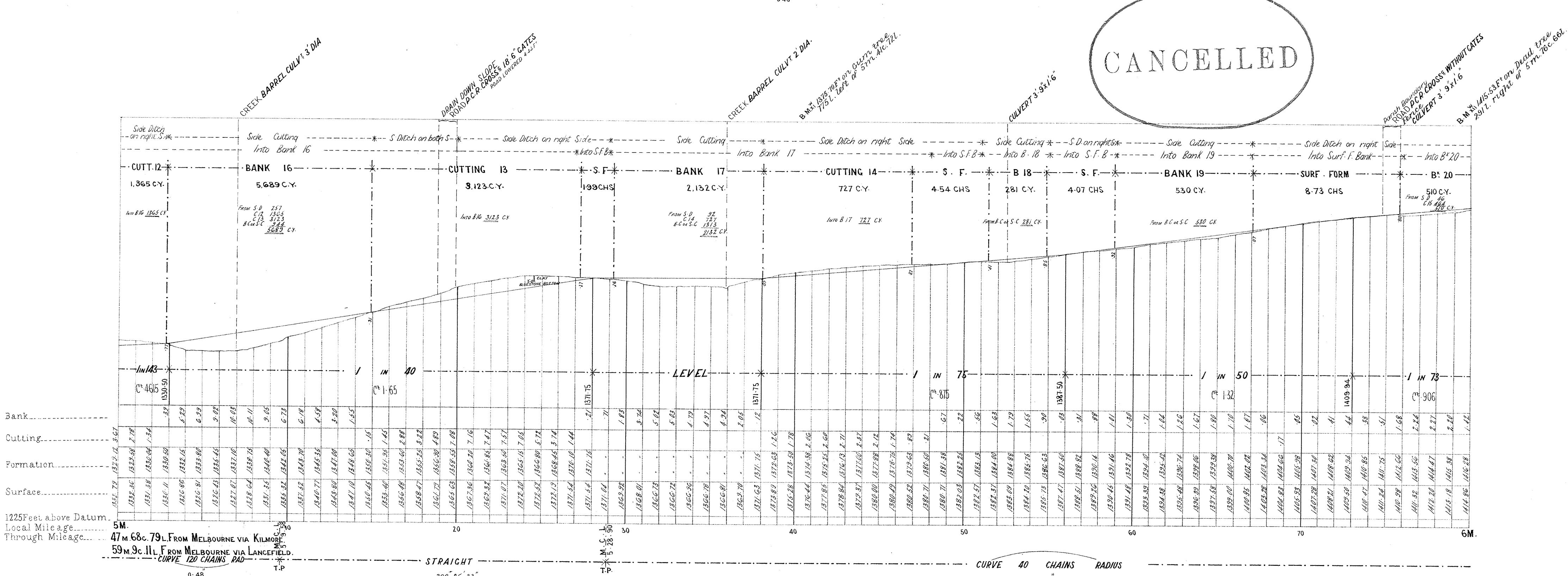
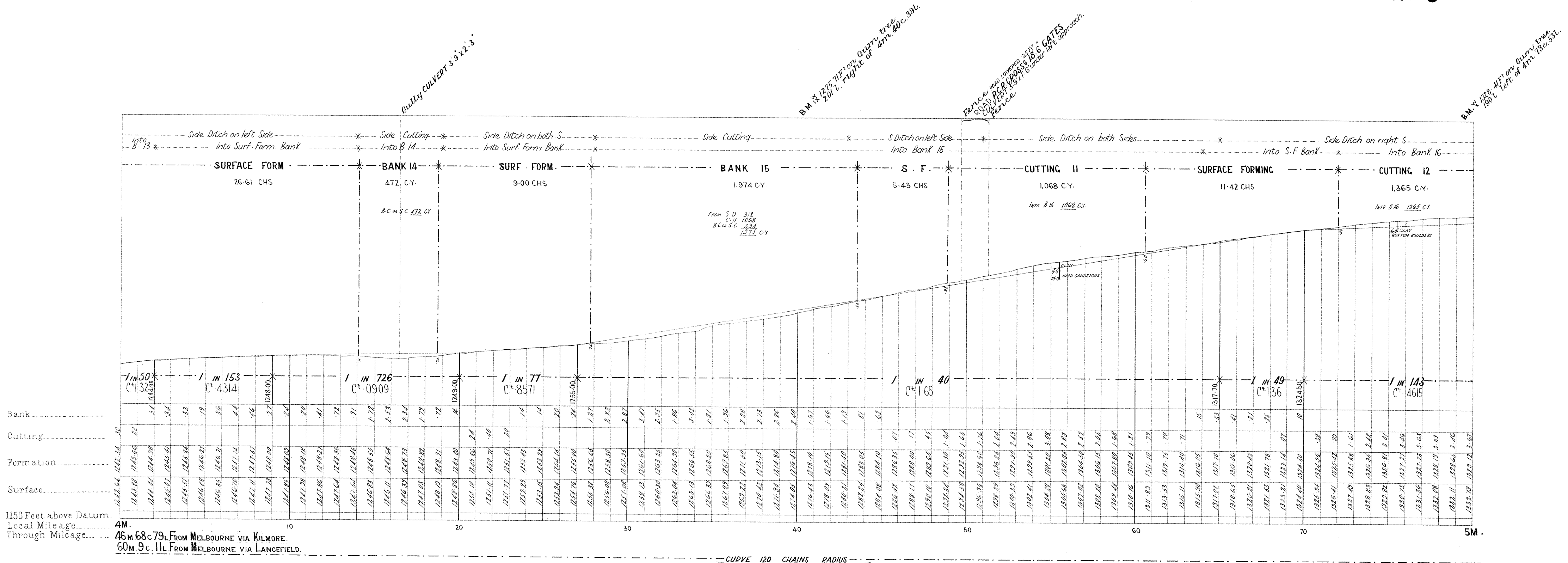
NOTE—Contractors must form their own judgment as to the nature of the Excavations. Borings and other information shown on these Sections are derived from the Surveyors' notes but are not guaranteed as correct, and the Corporation will not incur any responsibility in respect thereof.

The figures under the description of the Curves at the bottom of the Section denote the super-elevation of the outer rail; Speed 30 miles an hour.

VICTORIAN RAILWAYS, LANCEFIELD AND KILMORE LINE.

SCALES: HORIZONTAL 4 CHAINS TO AN INCH
VERTICAL 40 FEET TO AN INCH.

CONTRACT N^o 3649
N^o 3



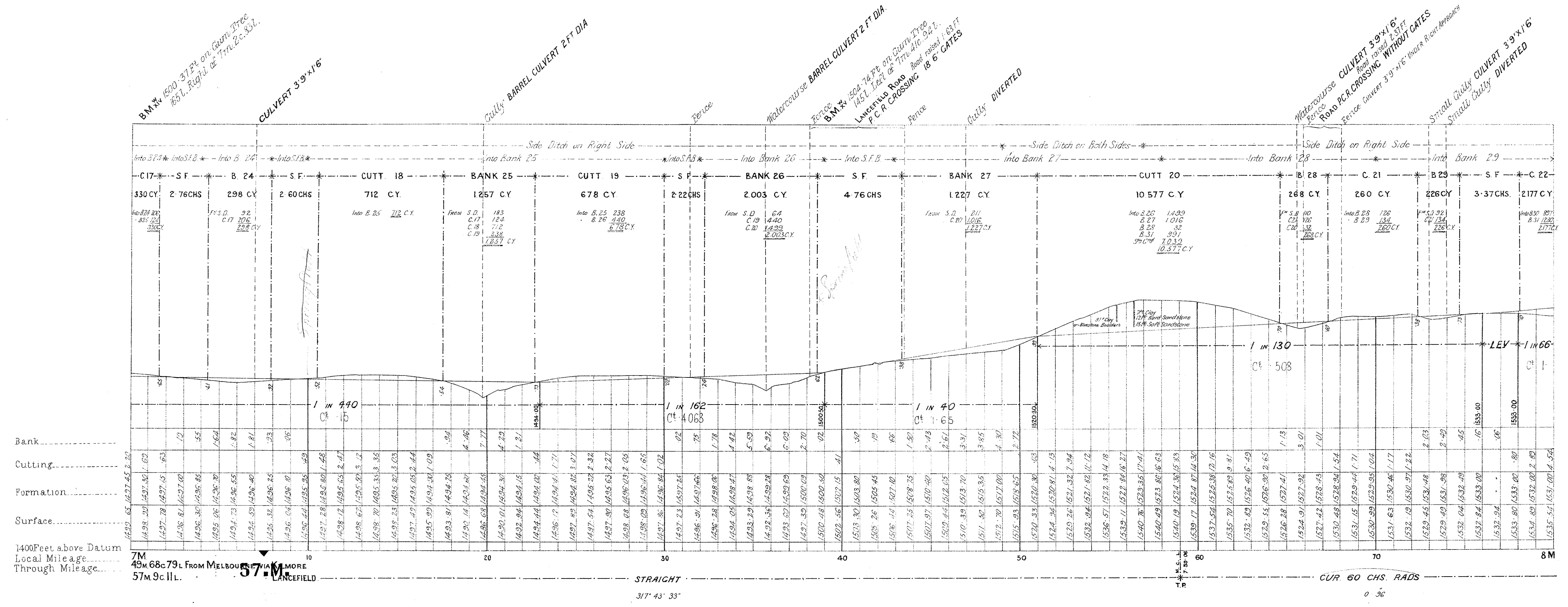
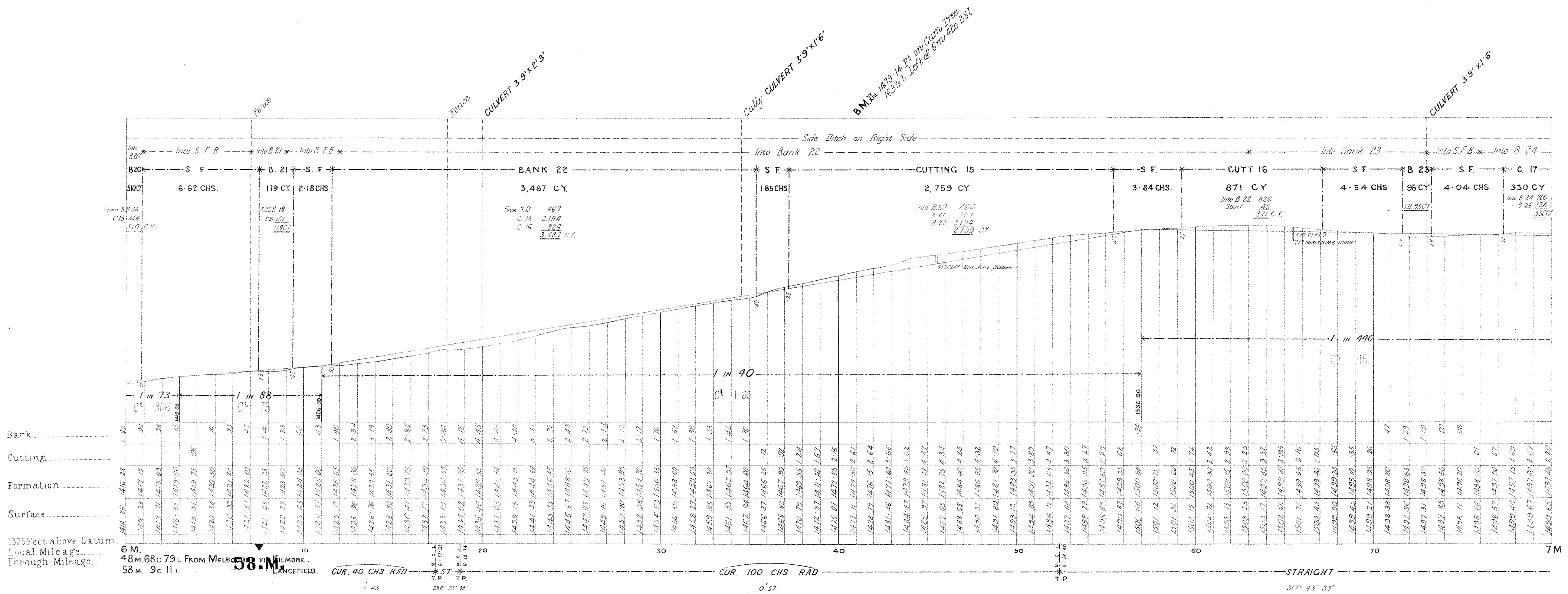
NOTE - Contractors must form their own judgment as to the nature of the excavations, Benches and other information shown on these Sections are derived from the Surveyors' notes but are not guaranteed as correct, and the Corporation will not incur any responsibility in respect thereof.

The figures under the description of the Curves at the bottom of the Section denote the super-elevation of the outer rail; Speed 30 miles an hour.

VICTORIAN RAILWAYS, LANCEFIELD AND KILMORE LINE.

**CONTRACT N° 3649
N° 4**

SCALES (HORIZONTAL 4 CHAINS TO AN INCH.
VERTICAL 40 FEET TO AN INCH.



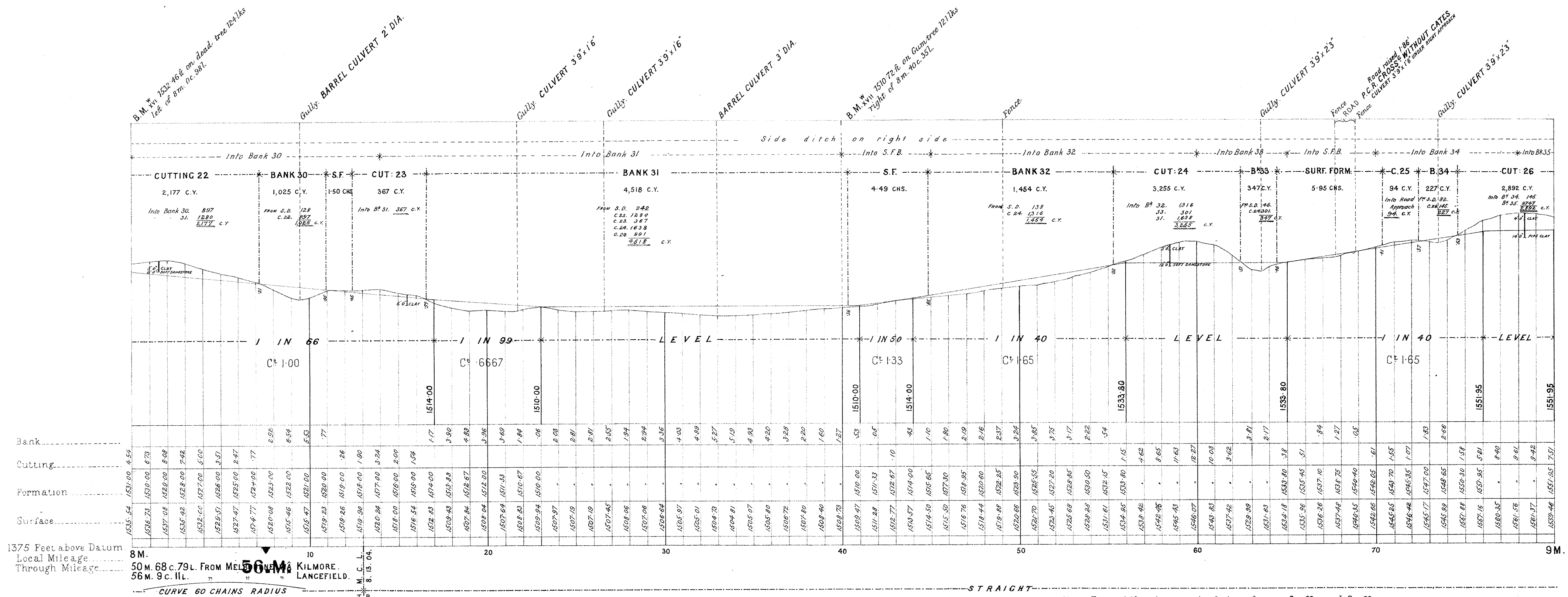
VICTORIAN RAILWAYS, LANCEFIELD AND KILMORE LINE.

CONTRACT No 3649.
No 5.

SCALES (HORIZONTAL 4 CHAINS TO AN INCH.
VERTICAL 40 FEET TO AN INCH.

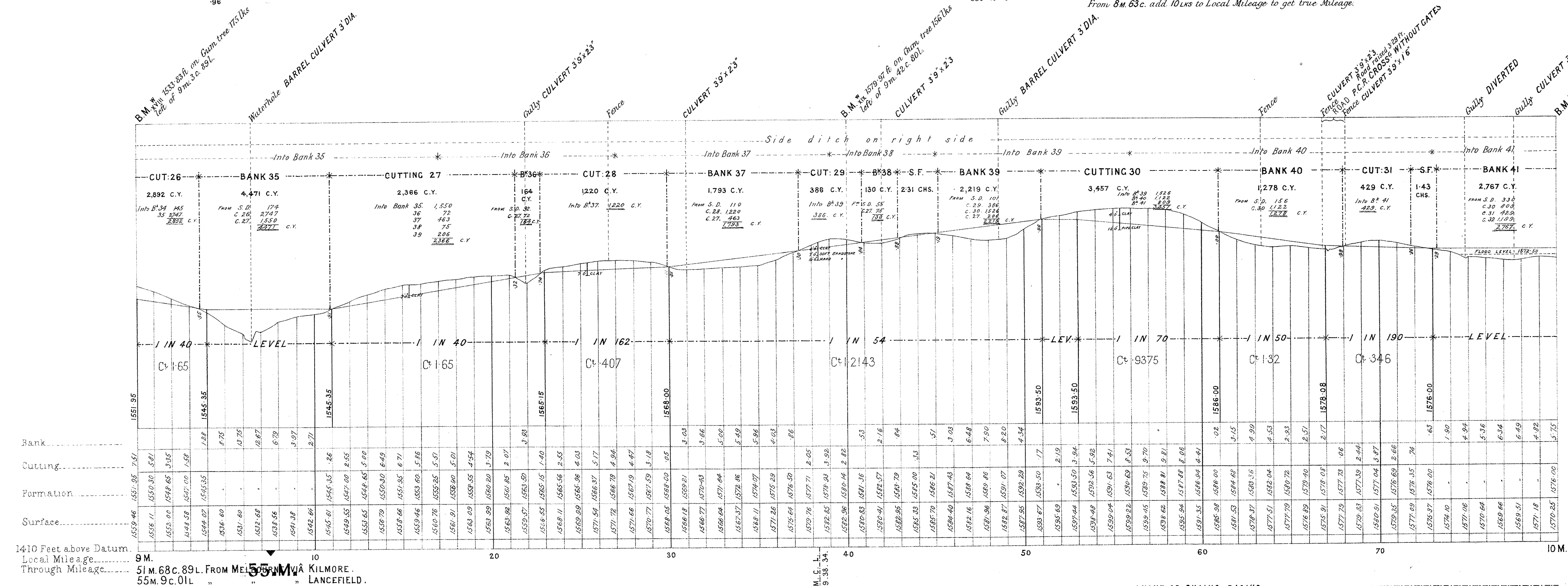
NOTE—Contractors must form their own judgment as to the nature of the Excavations, Borings and other information shown on these Sections are derived from the Surveyors' notes but are not guaranteed as correct, and the Corporation will not incur any responsibility in respect thereof.

The Figures under the description of the Curves at the bottom of the Section denote the super-elevation of the outer rail; Speed 30 miles an hour.



1375 Feet above Datum
Local Mileage
Through Mileage

STRAIGHT 350' 10" 3'
Note: Error of 10lks in excess in chainage between 8M.62c. and 8M.63c. From 8M.63c. add 10lks to Local Mileage to get true Mileage.



1410 Feet above Datum
Local Mileage
Through Mileage

Note Error of 1lks in excess in chainage between 8m.62c. and 8m.63c. From 8m.63c. add 10lks to Local Mileage to get true Mileage.

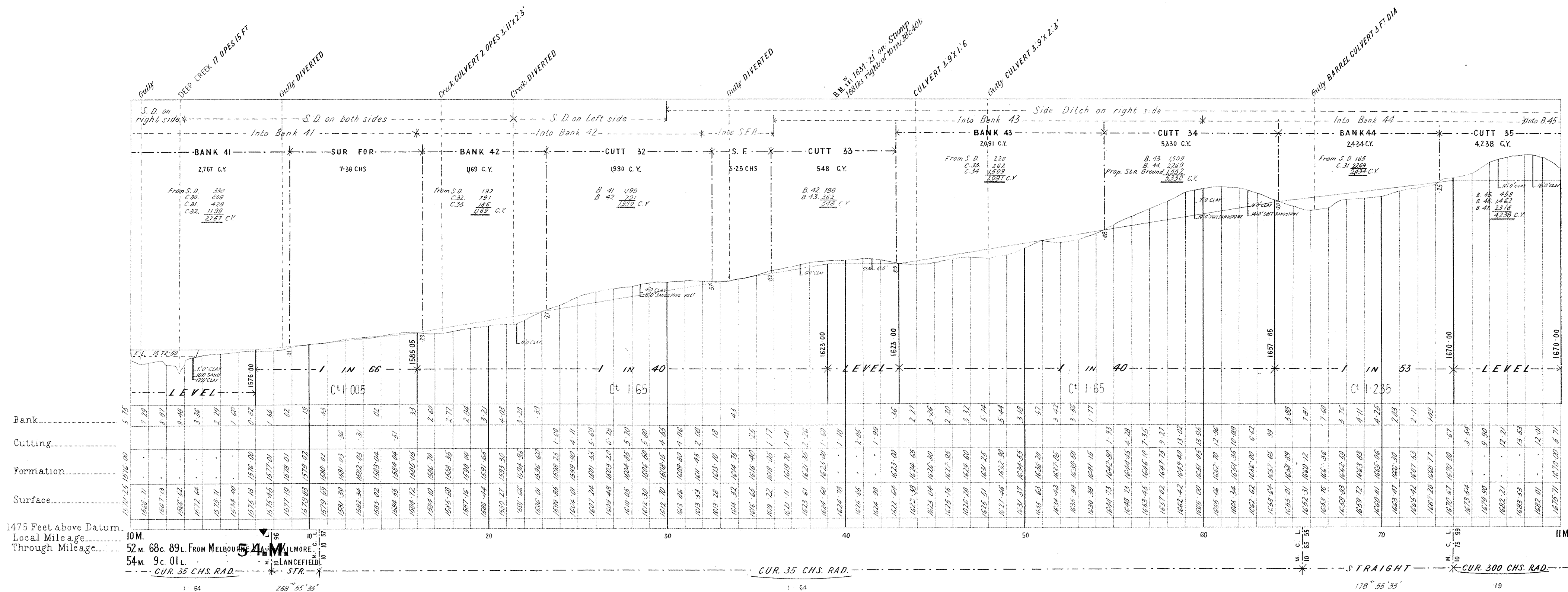
VICTORIAN RAILWAYS, LANCEFIELD AND KILMORE LINE.

CONTRACT N^o 3649
N^o 6

NOTE :- Contractors must form their own judgment as to the nature of the Excavations. Borings and other information shown on these Sections are derived from the Surveyors' notes but are not guaranteed as correct, and the Corporation will not incur any responsibility in respect thereof.

The figures under the description of the Curves at the bottom of the Section denote the super-elevation of the outer rail; Speed 30 miles an hour

SCALES. (HORIZONTAL 4 CHAINS TO AN INCH.
VERTICAL 40 FEET TO AN INCH.



1475 Feet above Datum
Local Mileage.....
Through Mileage.....

10M.
52m. 68c. 89l. From MELBOURNE
54m. 9c. 01l. From LANCEFIELD

1500 Feet above Datum
Local Mileage.....
Through Mileage.....

11M.
53m. 68c. 89l. From MELBOURNE
53m. 9c. 01l. From LANCEFIELD

Note Error of 10lks in excess in chainage between 8m. 62c. and 8m. 63c. From 8m. 63c. add 10lks to Local Mileage to get true Mileage.

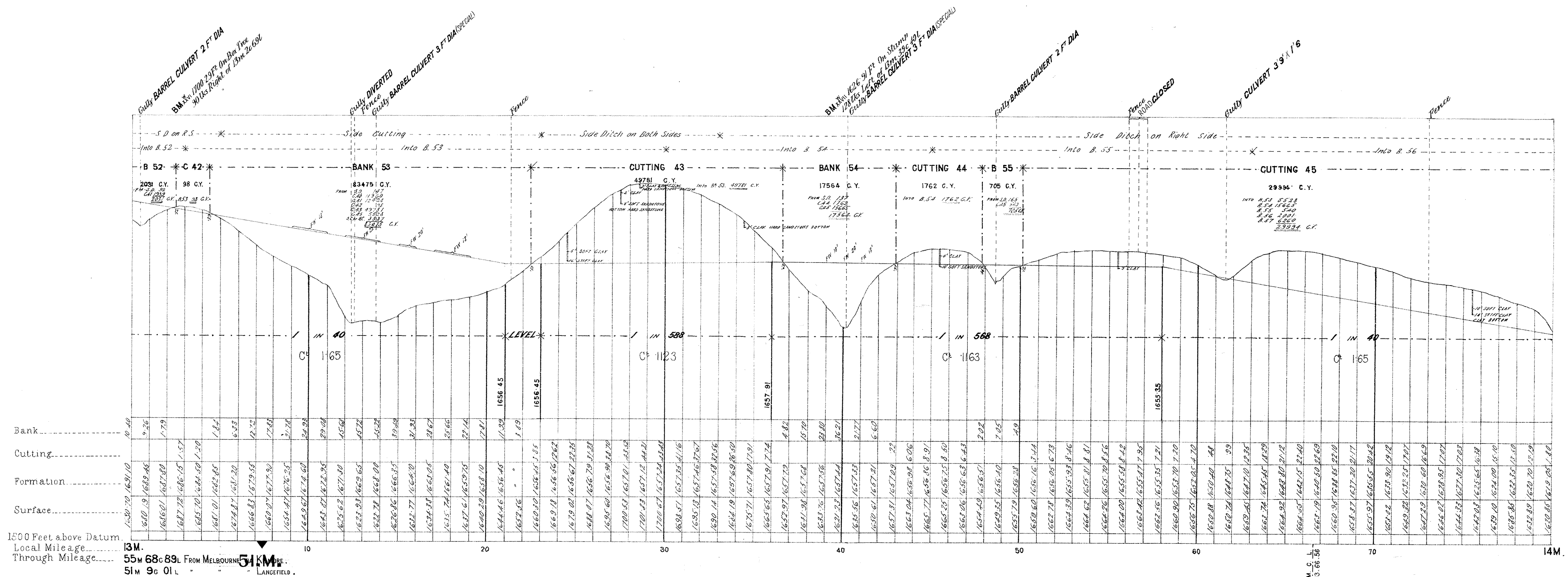
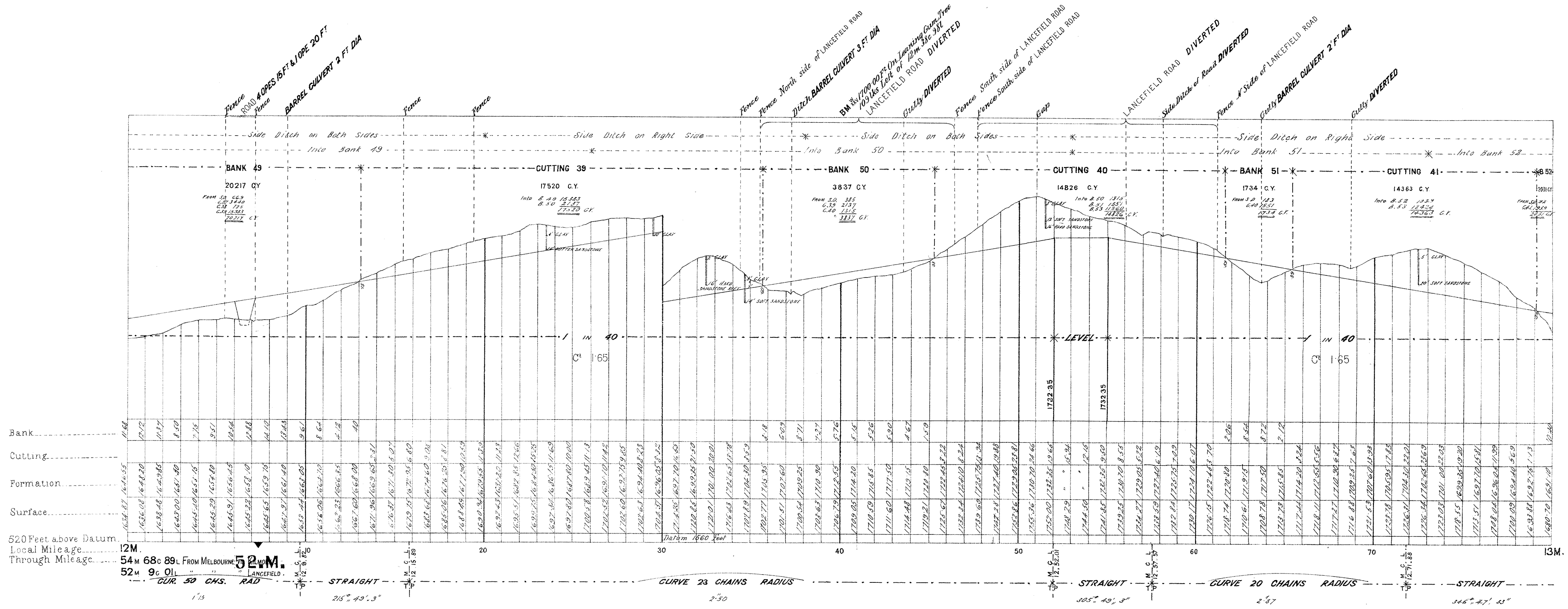
NOTE :- Contractors must form their own judgment as to the nature of the Excavations. Borings and other information shown on these Sections are derived from the Surveyors' notes but are not guaranteed as correct, and the Corporation will not incur any responsibility in respect thereof.

The figures under the description of the Curves at the bottom of the Section denote the super-elevation of the outer rail; Speed 30 miles an hour.

VICTORIAN RAILWAYS, LANCEFIELD AND KILMORE LINE.

**CONTRACT N^o 3649.
N^o 7.**

SCALES (HORIZONTAL 4 CHAINS TO AN INCH.
VERTICAL 40 FEET TO AN INCH.



Note Error of 10ms in excess in chainage between 8m.62c. and 8m.63c.
From 8m.63c. add 10ms to Local Mileage to get true Mileage

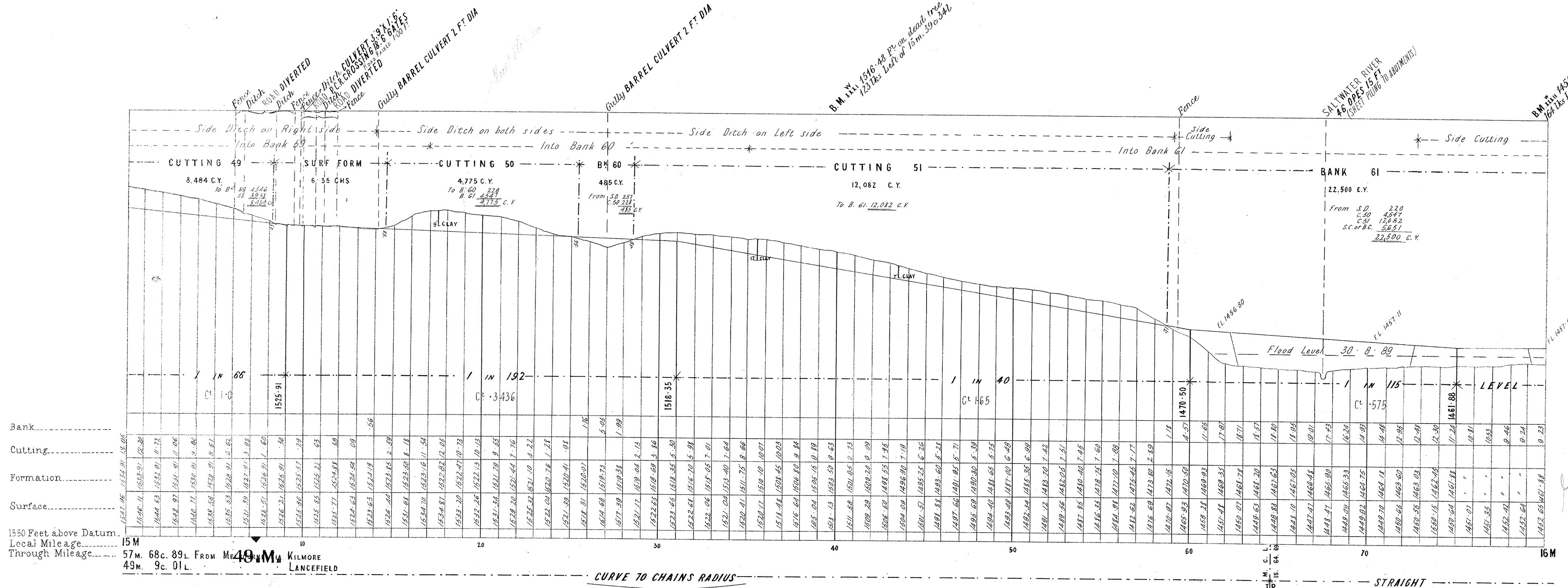
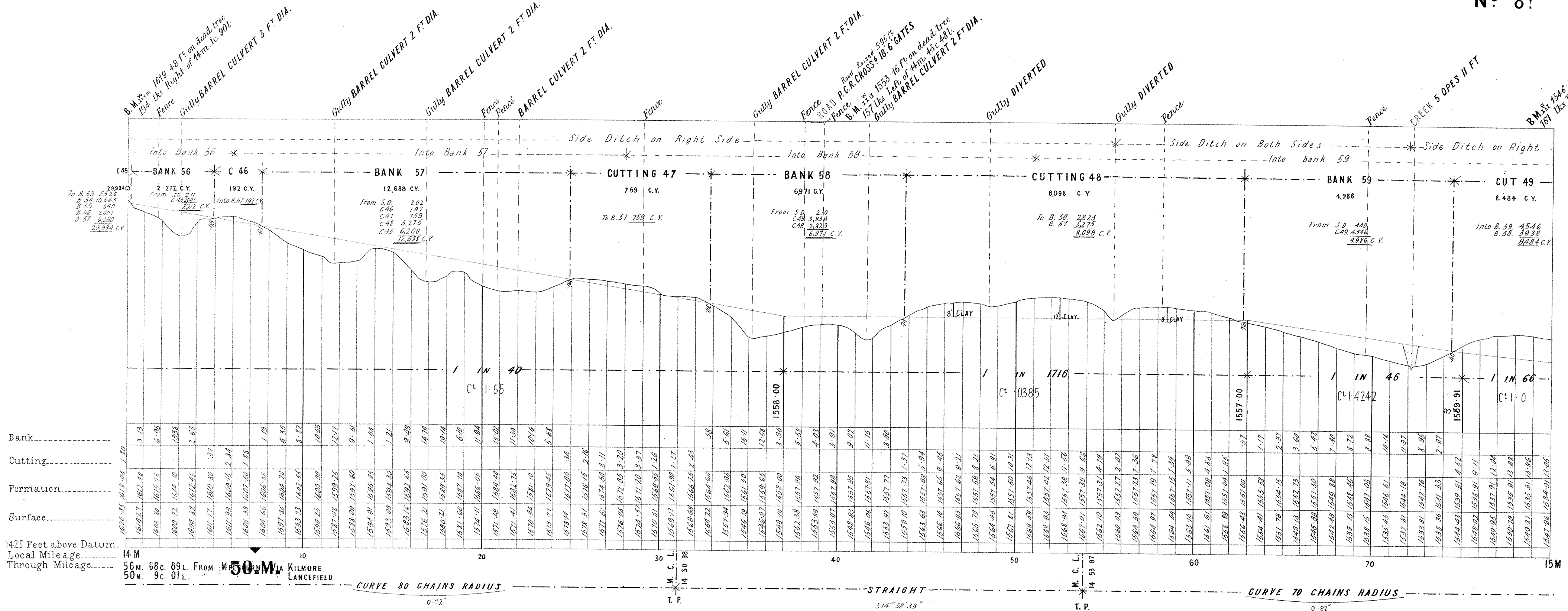
NOTE - Contractors must form their own judgment as to the nature of the Excavations, Borings and other information shown on these Sections are derived from the Surveyors' notes but are not guaranteed as correct, and the Corporation will not incur any responsibility in respect thereof.

The figures under the description of the Curves at the bottom of the Section denote the super-elevation of the outer rail; Speed 30 miles an hour.

VICTORIAN RAILWAYS, LANCEFIELD AND KILMORE LINE

CONTRACT N^o 3649.
N^o 8*

SCALES: HORIZONTAL 4 CHAINS TO AN INCH.
VERTICAL 40 FEET TO AN INCH.



Note - Error of 10 lbs. in excess in chainage between Sm. 62c. and Sm. 63c. From Sm. 63c. add 10 lbs. to Local Mileage to get true Mileage.

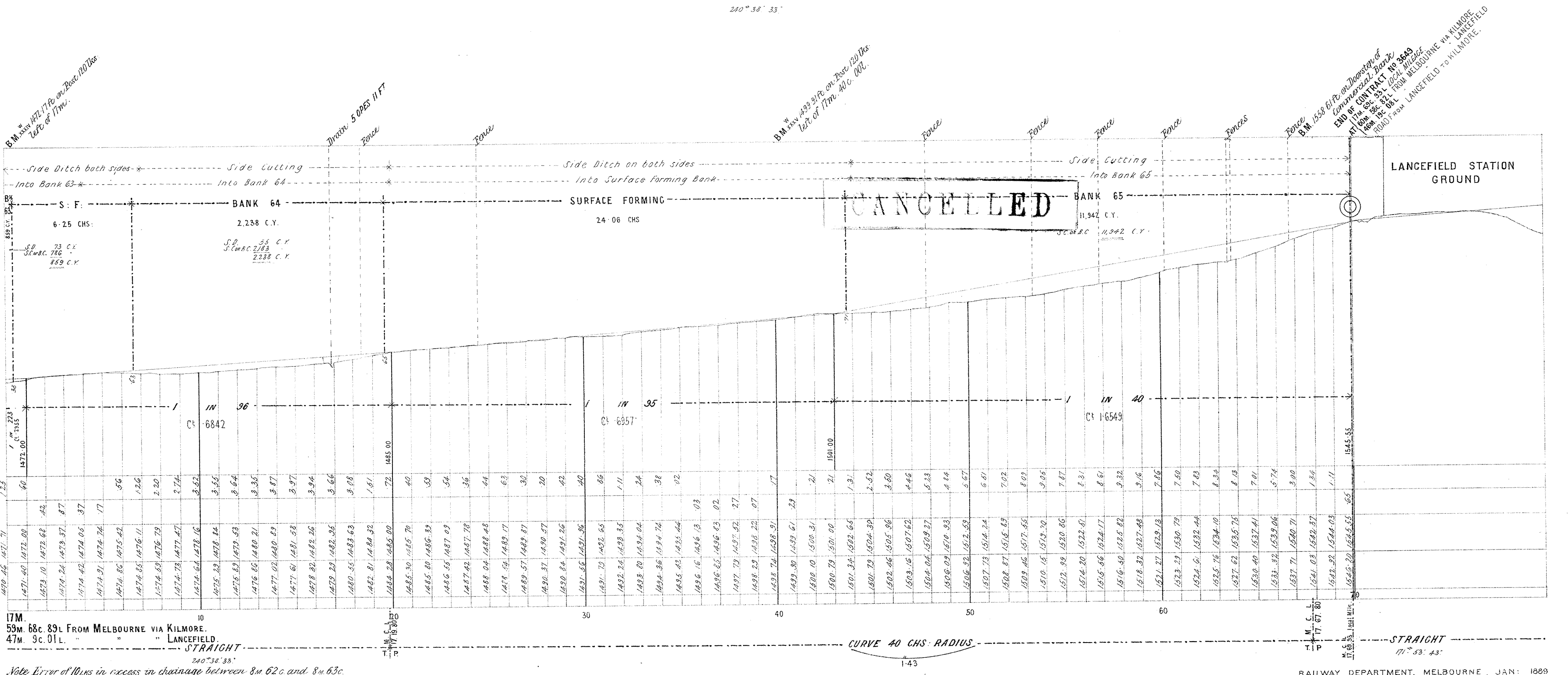
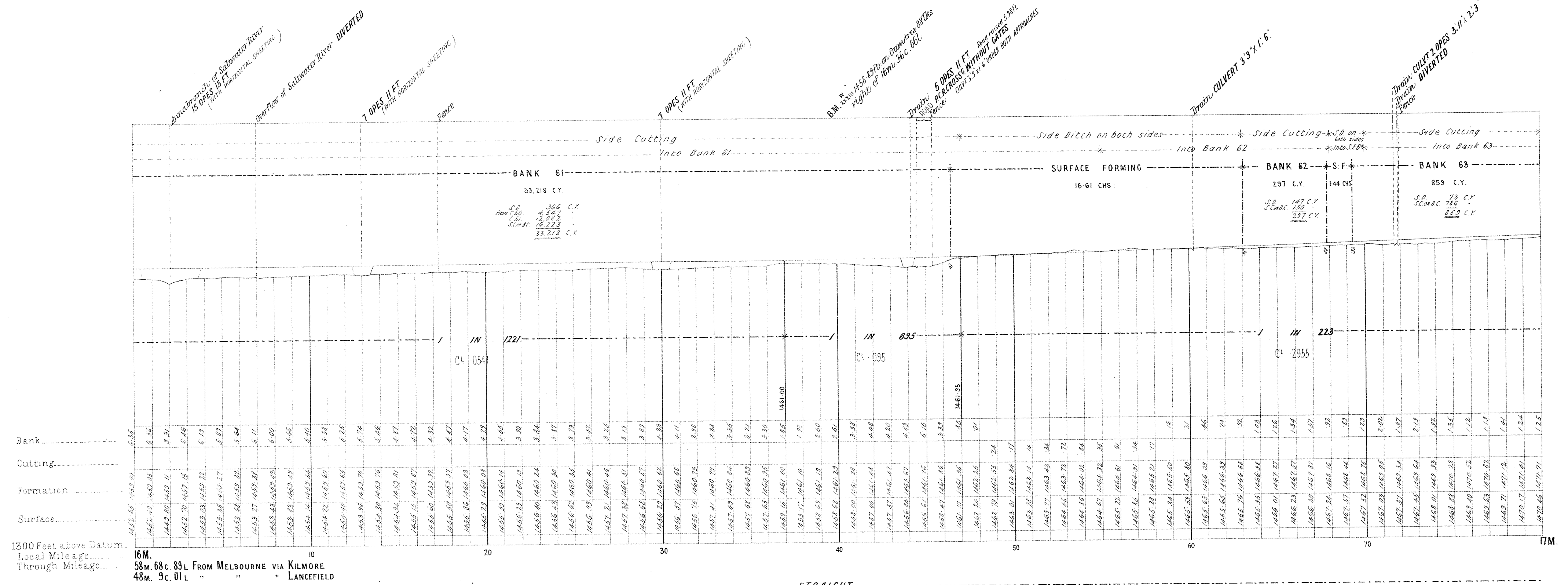
NOTE

Calculations must be made and agreed to by the nature of the work. The figures and other information shown on these sections are derived from the Surveyors' notes but are not guaranteed as correct, and the Corporation will not incur any responsibility in respect thereof.

The figures under the description of the Curves at the bottom of the Section denote the super-elevation of the outer rail; Speed 30 miles an hour.

SCALES (HORIZONTAL 4 CHAINS TO AN INCH (VERTICAL 40 FEET TO AN INCH.

CONTRACT No 3649 No 9



Note Error of 0.01ms in excess in chaining between 8m 62c and 8m 63c. From 8m 63c. add 0.01ms to Local Mileage to get true Mileage.

VICTORIAN RAILWAYS

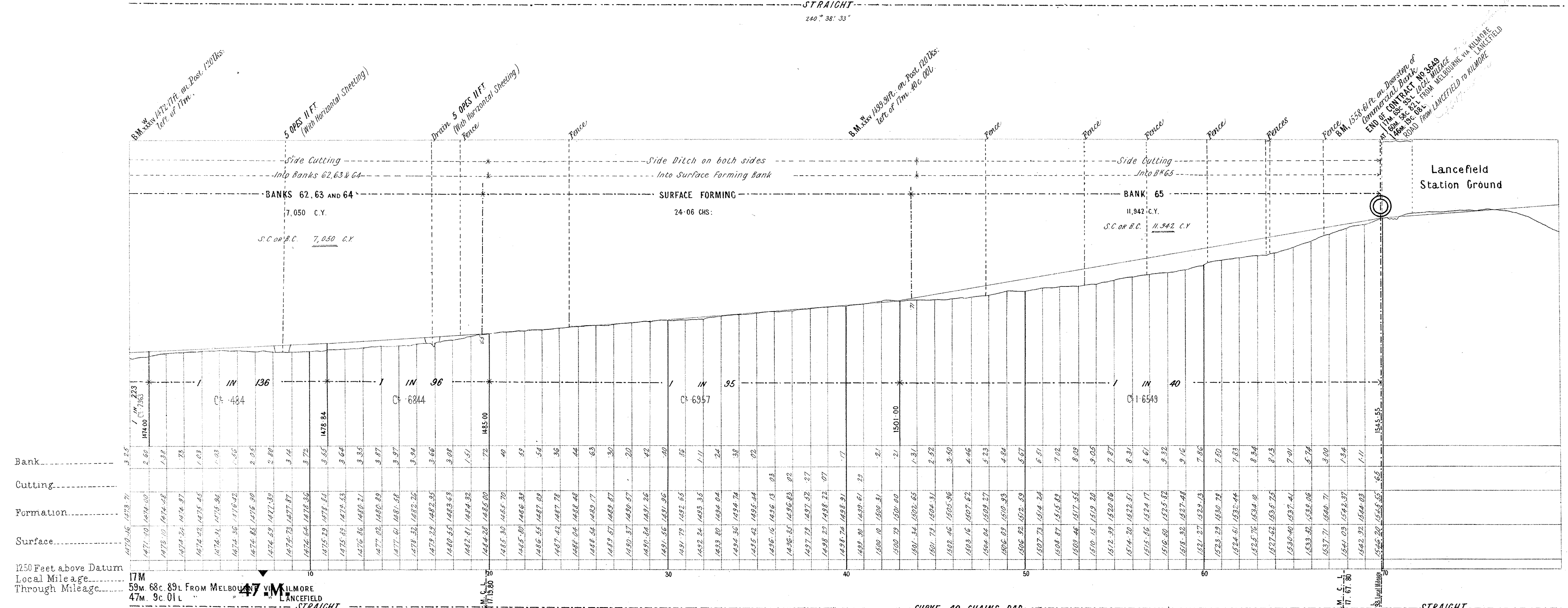
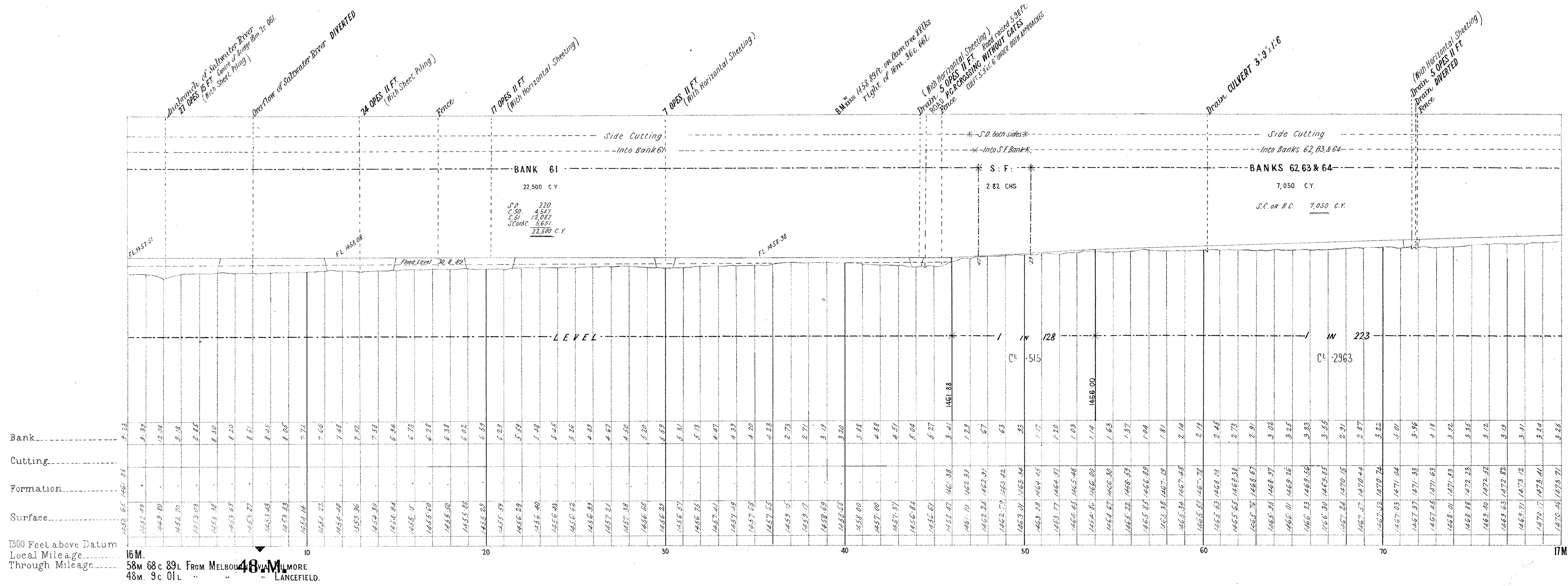
LANCEFIELD AND KILMORE LINE

CONTRACT N^o 3649.
N^o 9*

NOTE—Contractors must form their own judgment as to the nature of the Excavations Borings and other information shown on these Sections are derived from the Surveyors' notes but are not guaranteed as correct, and the Corporation will not incur any responsibility in respect thereof.

The figures under the description of the Curves at the bottom of the Section denote the super-elevation of the outer rail; Speed 30 miles an hour.

SCALES: (HORIZONTAL 4 CHAINS TO AN INCH.
VERTICAL 40 FEET TO AN INCH.



Note. Error of 100ks in excess in Chainage between 8m 62c and 8m 63c From 8m 63c add 100ks to Local Mileage to get True Mileage