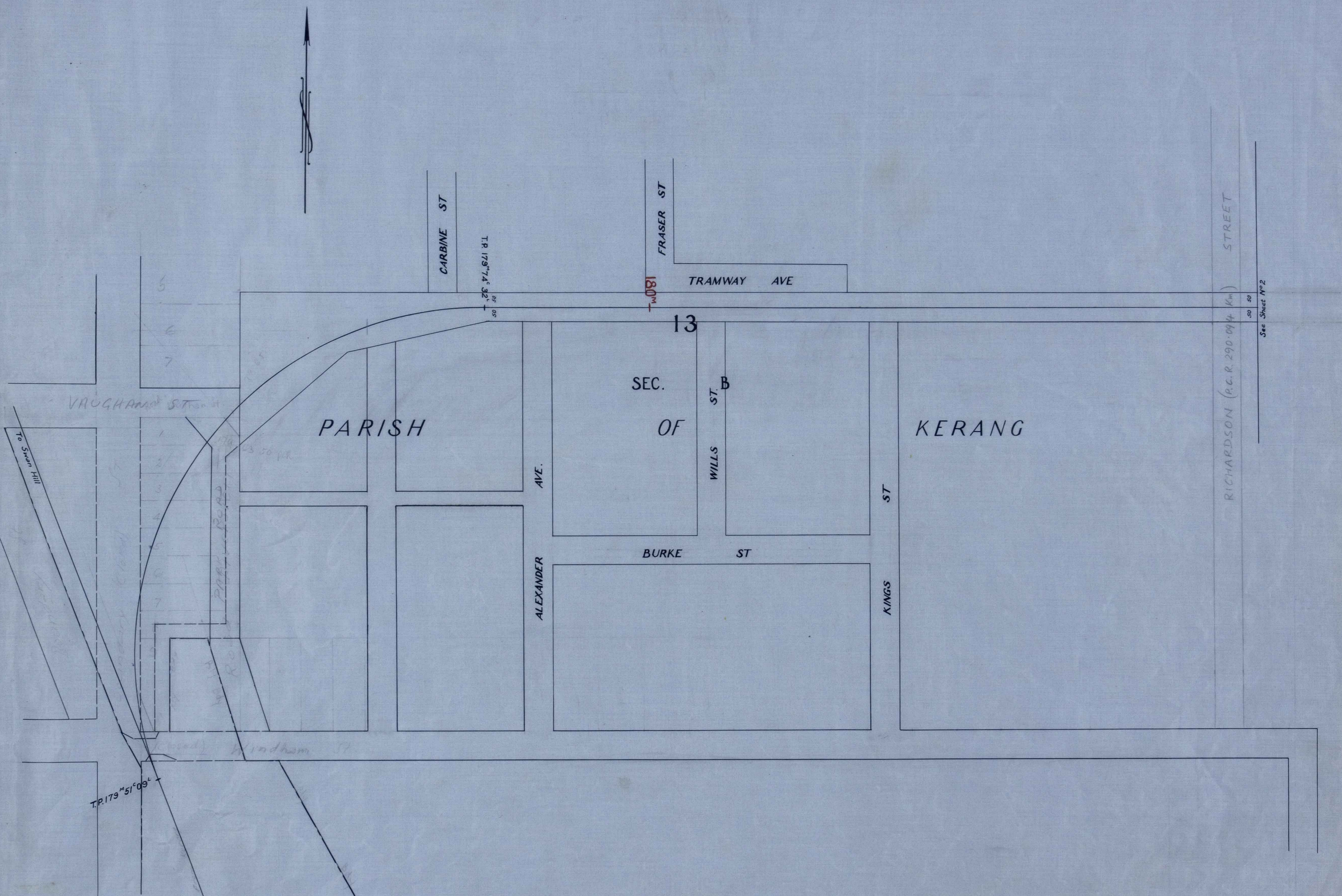




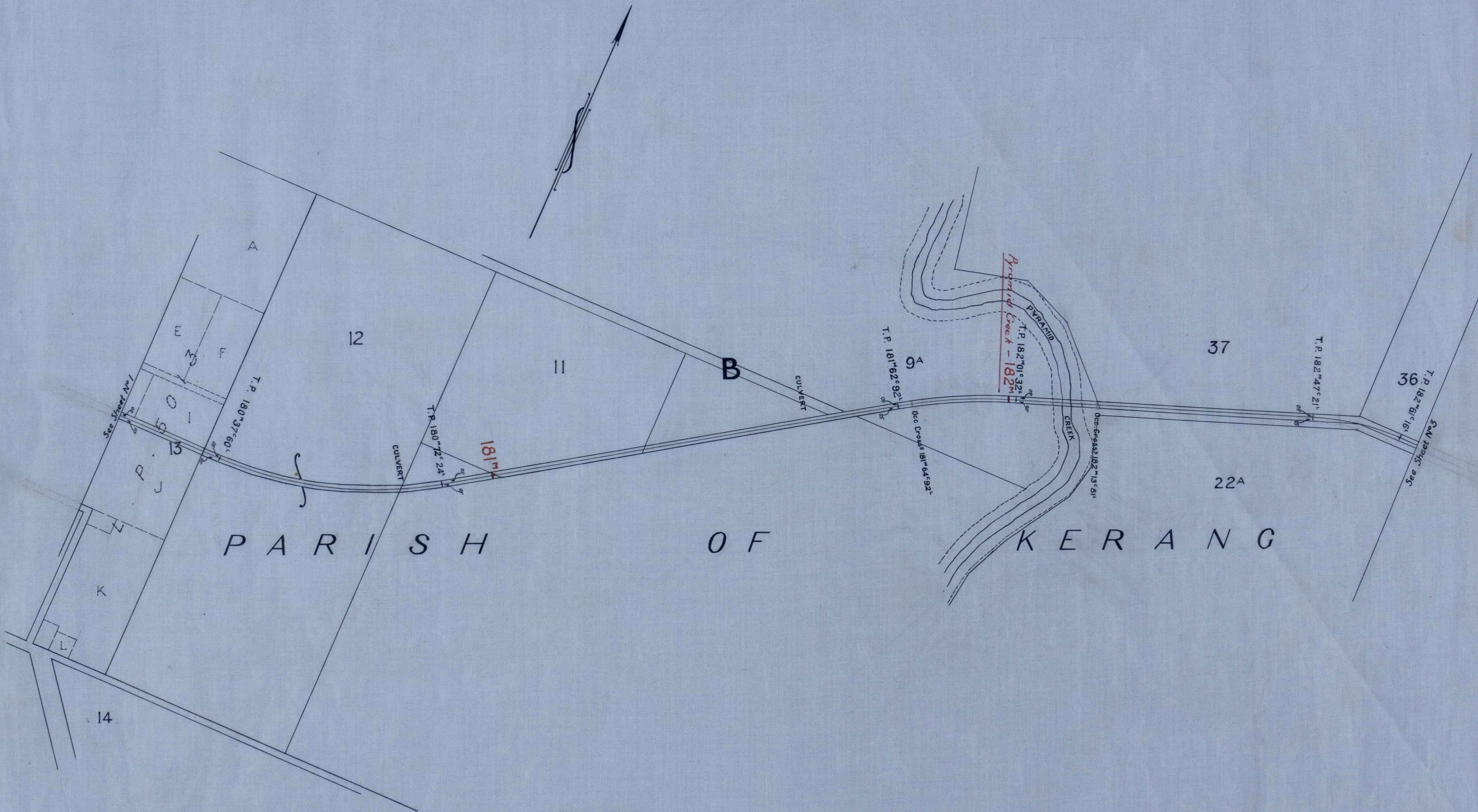
# V.R. KERANG AND KOONDROOK RAILWAY

SCALE: 2 CHAINS TO 1 INCH



# V.R. KERANG AND KOONDROOK RAILWAY

SCALE: 10 CHAINS TO 1 INCH



# V.R. KERANG AND KOONDRUCK RAILWAY

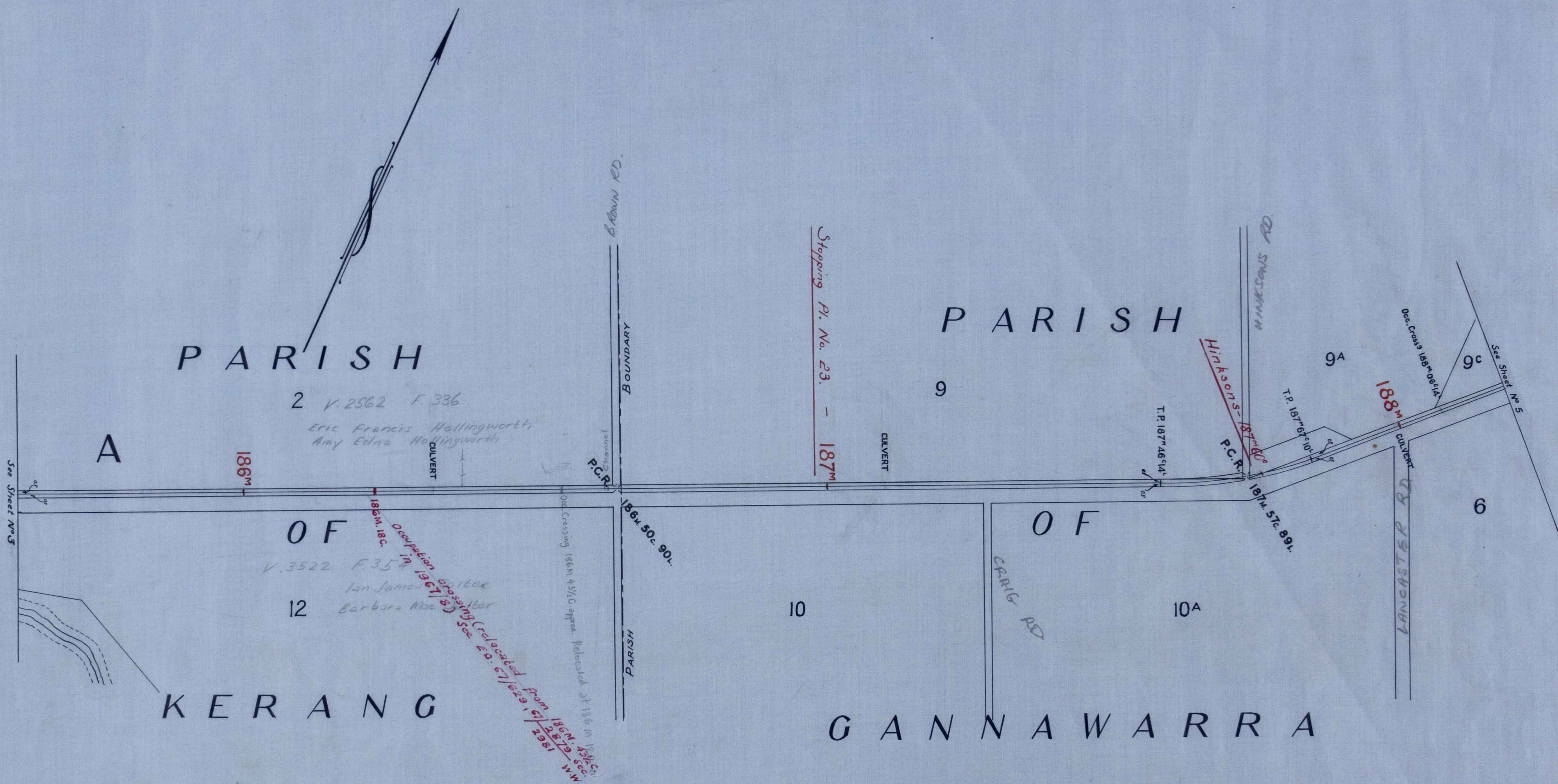
SCALE: 10 CHAINS TO 1 INCH

3



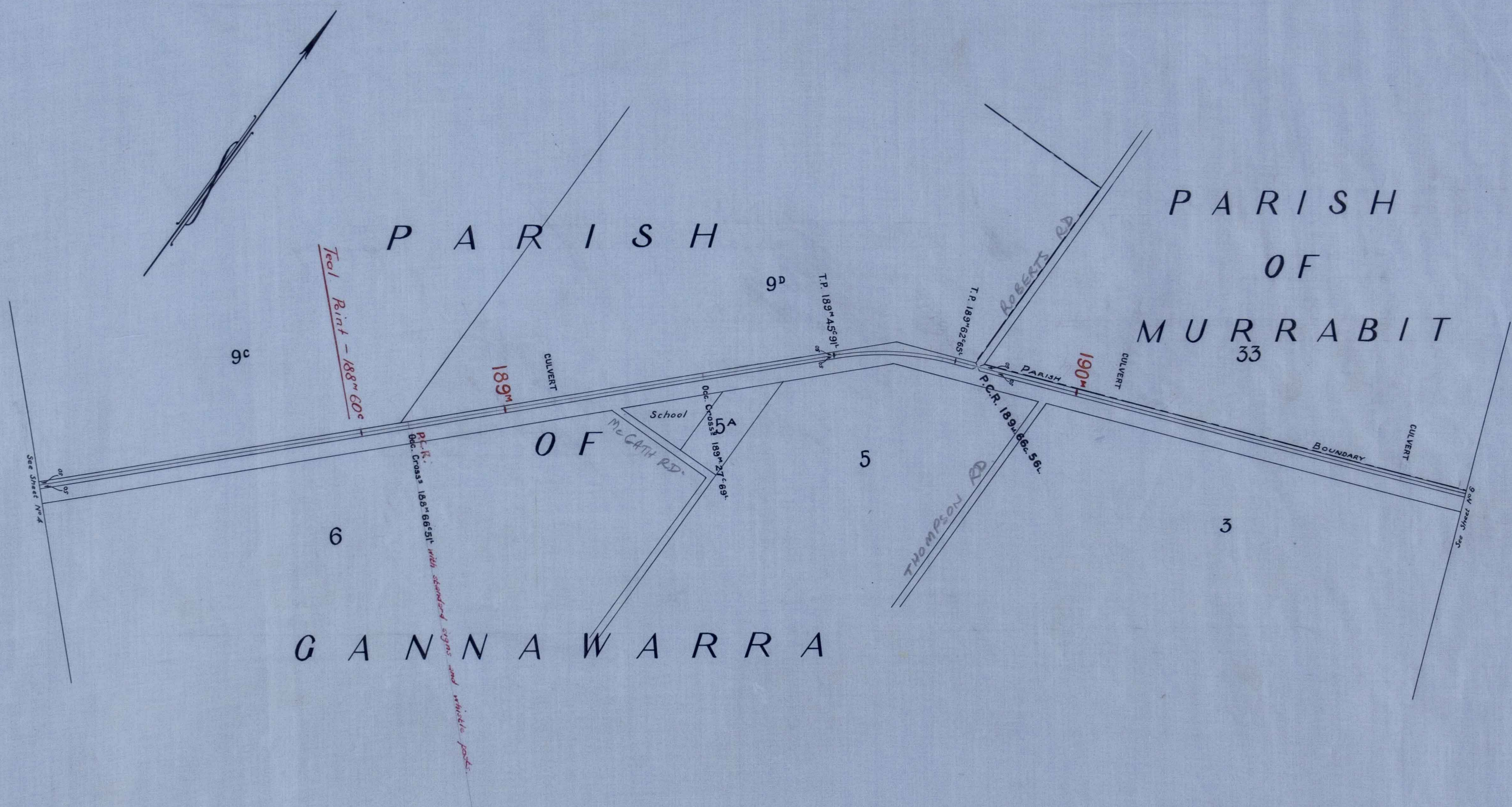
# V.R. KERANG AND KOONDROOK RAILWAY

SCALE: 10 CHAINS TO 1 INCH



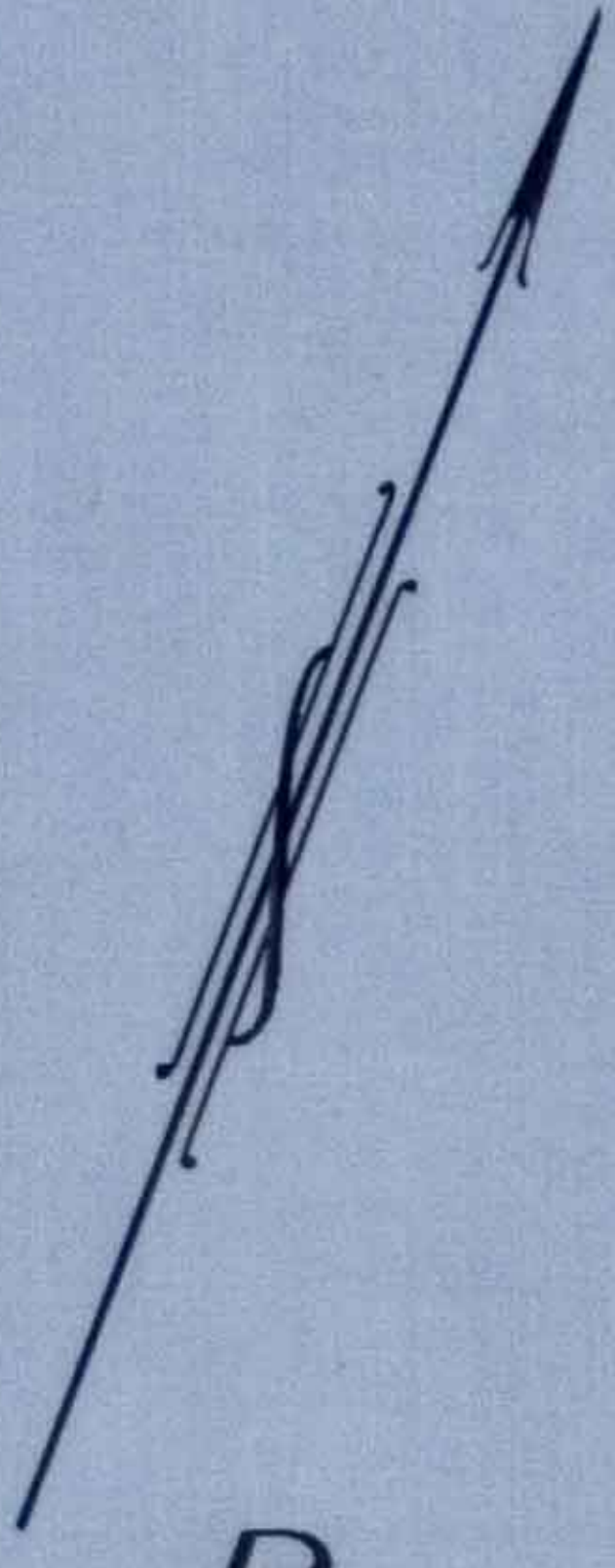
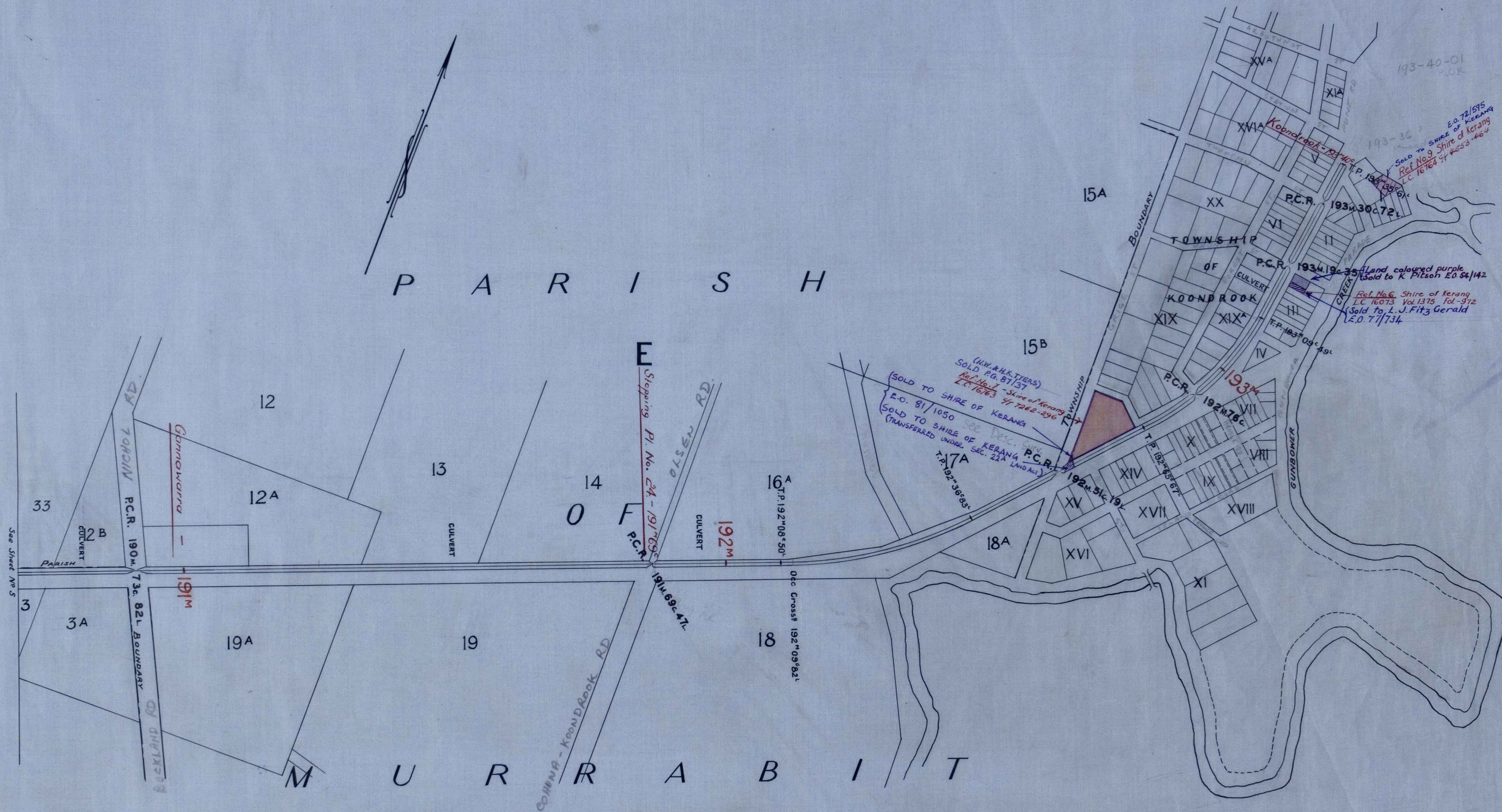
# V.R. KERANG AND KOONDRICK RAILWAY

SCALE: 10 CHAINS TO 1 INCH



# V.R. KERANG AND KOONBROOK RAILWAY

SCALE: 10 CHAINS TO 1 INCH



P A R I S H

M U R R A B I T T

193-40-01  
P.C.R.

193-36  
SOLD TO SHIRE OF KERANG  
Ref. No. 9  
L.C. 16764 of 1933-46/4

Land coloured purple  
SOLD TO K. Pitson E.O. 84/142  
Ref. No. 6 Shire of Kerang  
L.C. 16073 Vol. 1375 Fol. 972  
SOLD TO L. J. Fitz Gerald  
E.O. 77/734

(J.W. & H.K. TYERS)  
SOLD P.G. 87/37  
Ref. No. 1 - Shire of Kerang  
L.C. 16763 of 1933-46/4  
E.O. 81/1050 see Desc. NEW  
SOLD TO SHIRE OF KERANG  
(TRANSFERRED UNDER SEC. 21A LAND ACT)  
T.P. 192-36684

192m 31c 19c

16A  
T.P. 192-08-50

Obc Cross 192-09-82

191m 69c 47c

192m  
CULVERT

191m

190m  
CULVERT

See Sheet No. 5