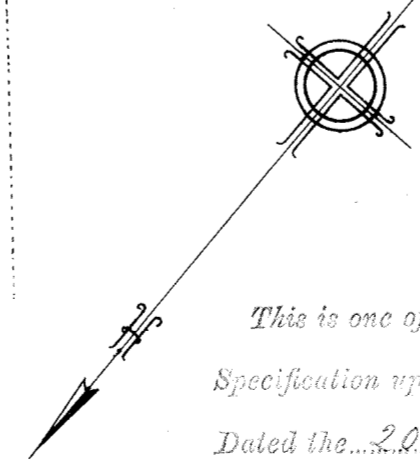
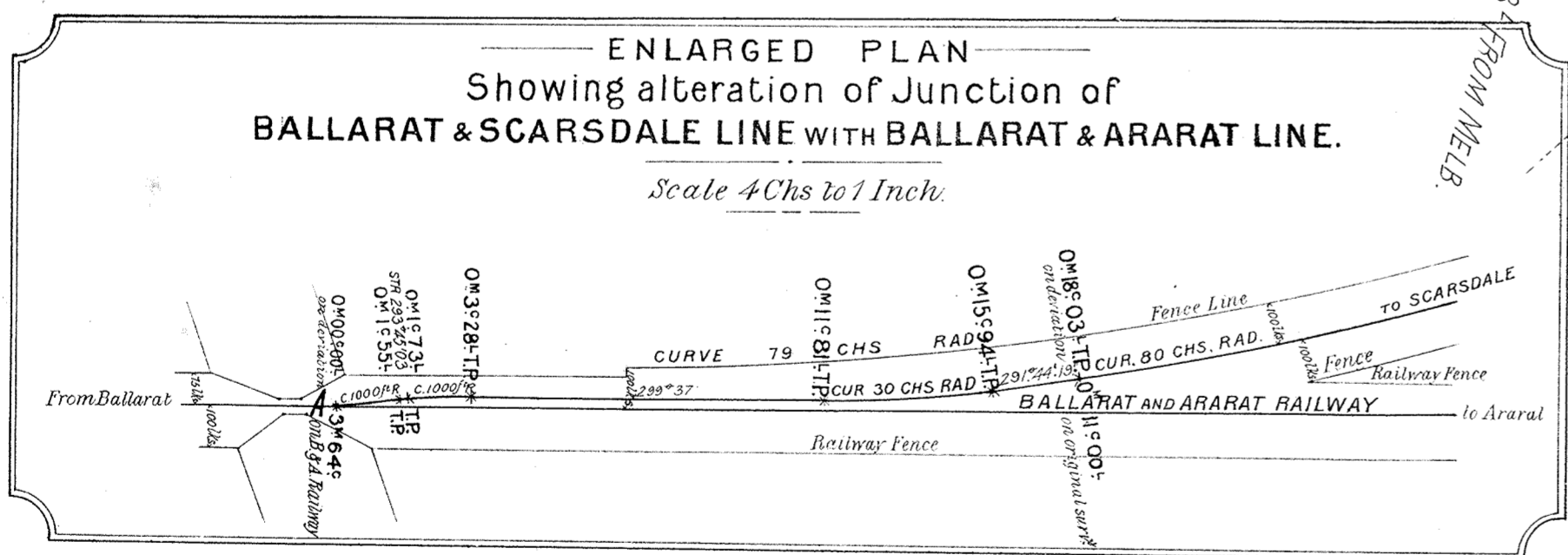
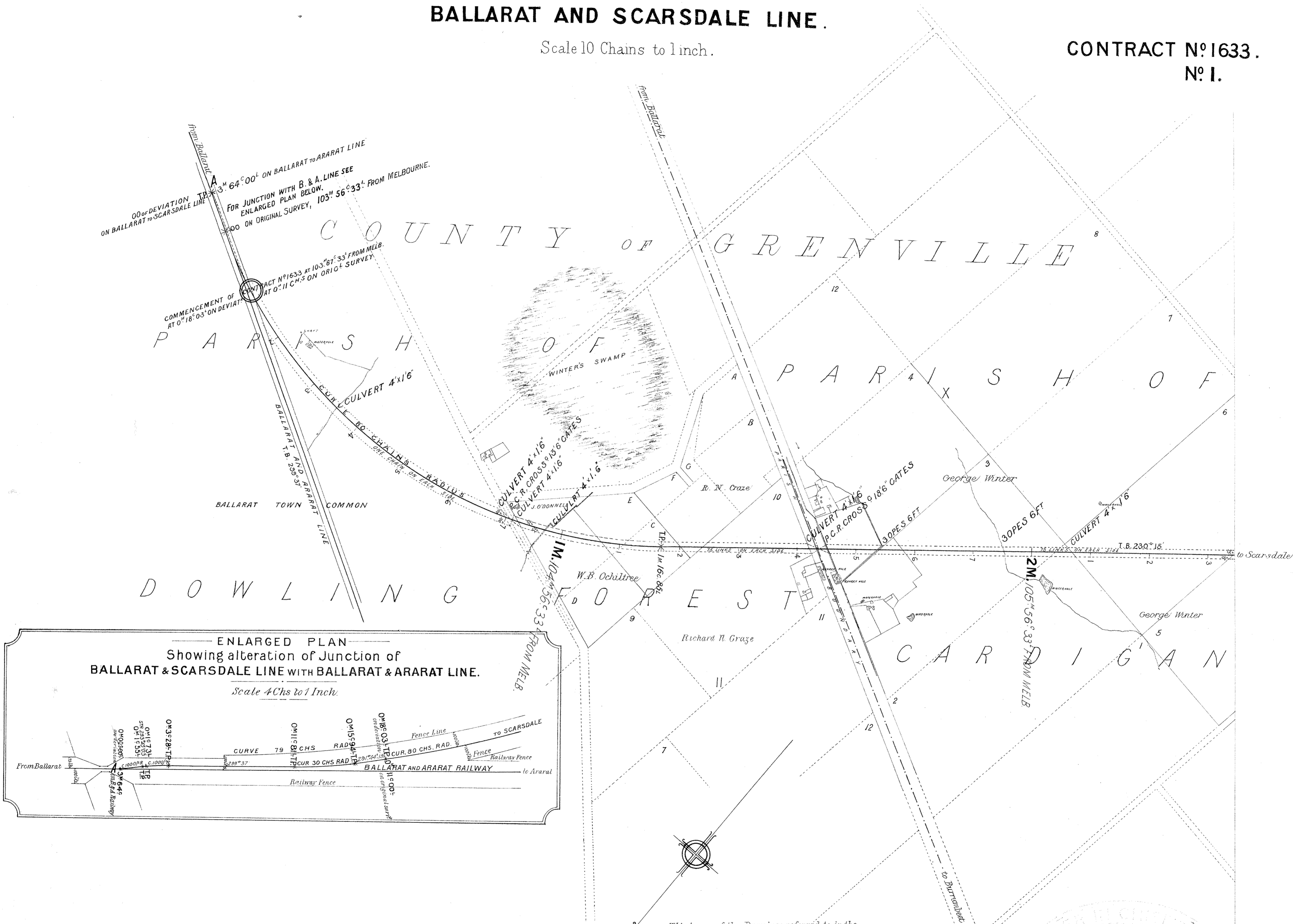


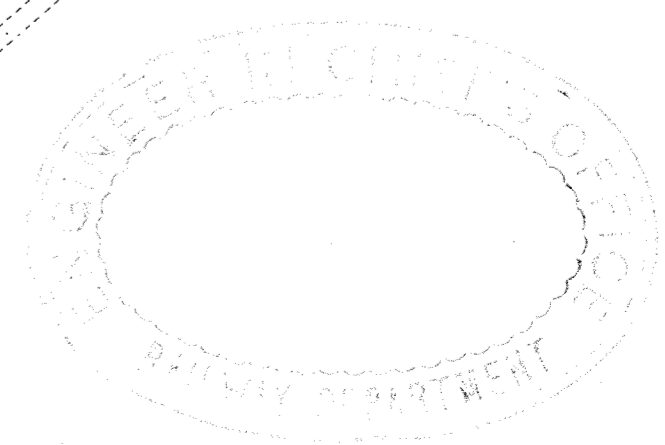
VICTORIAN RAILWAYS, BALLARAT AND SCARSDALE LINE.

Scale 10 Chains to 1 inch.

CONTRACT N^o 1633.
N^o 1.



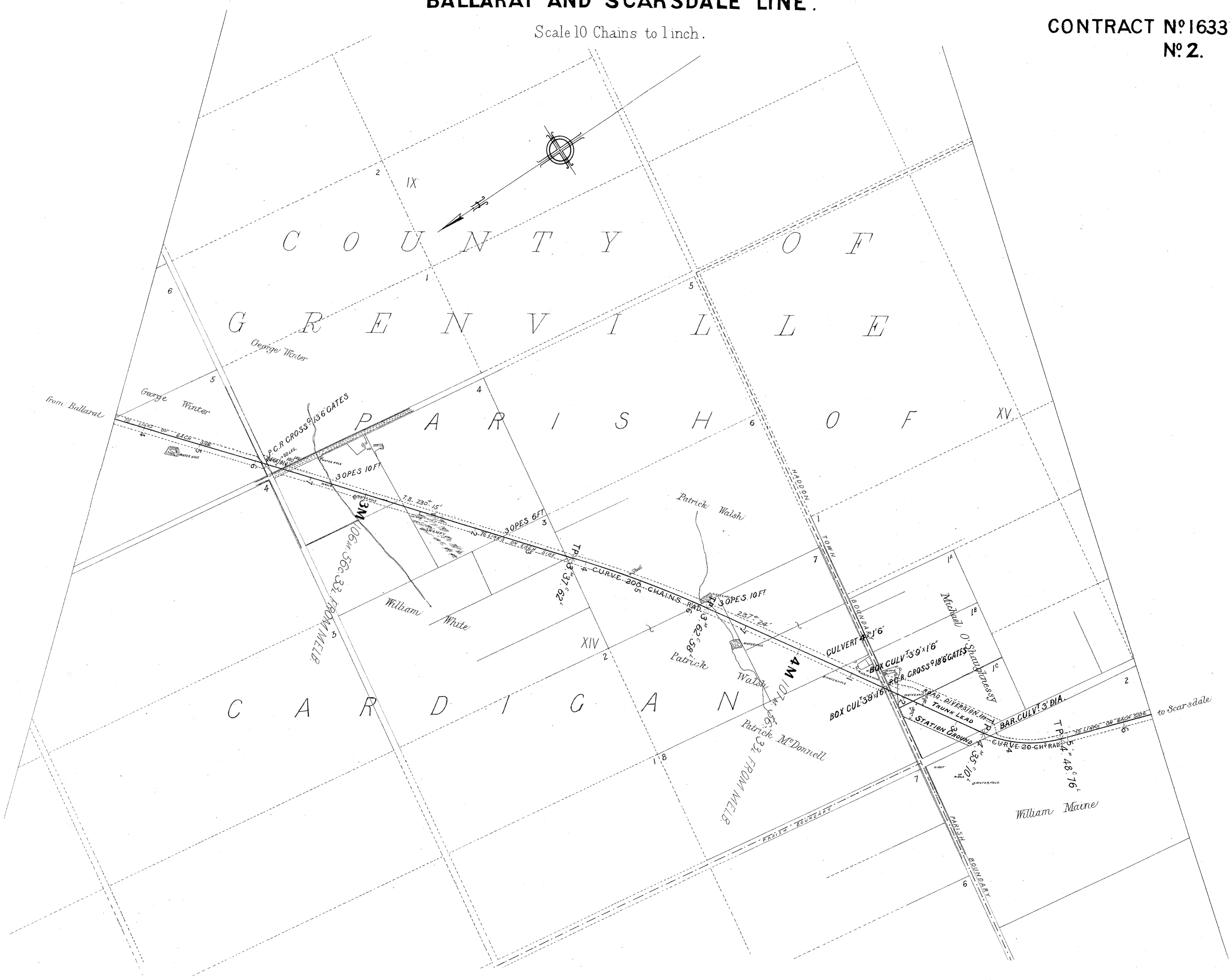
This is one of the Drawings referred to in the
Specification upon which... based... Tender
Dated the 20th day of July 1882
Signature of Contractor *Ball & Roberts*
Witness to Signature *Thos Hoare*



VICTORIAN RAILWAYS, BALLARAT AND SCARSDALE LINE.

Scale 10 Chains to 1 inch.

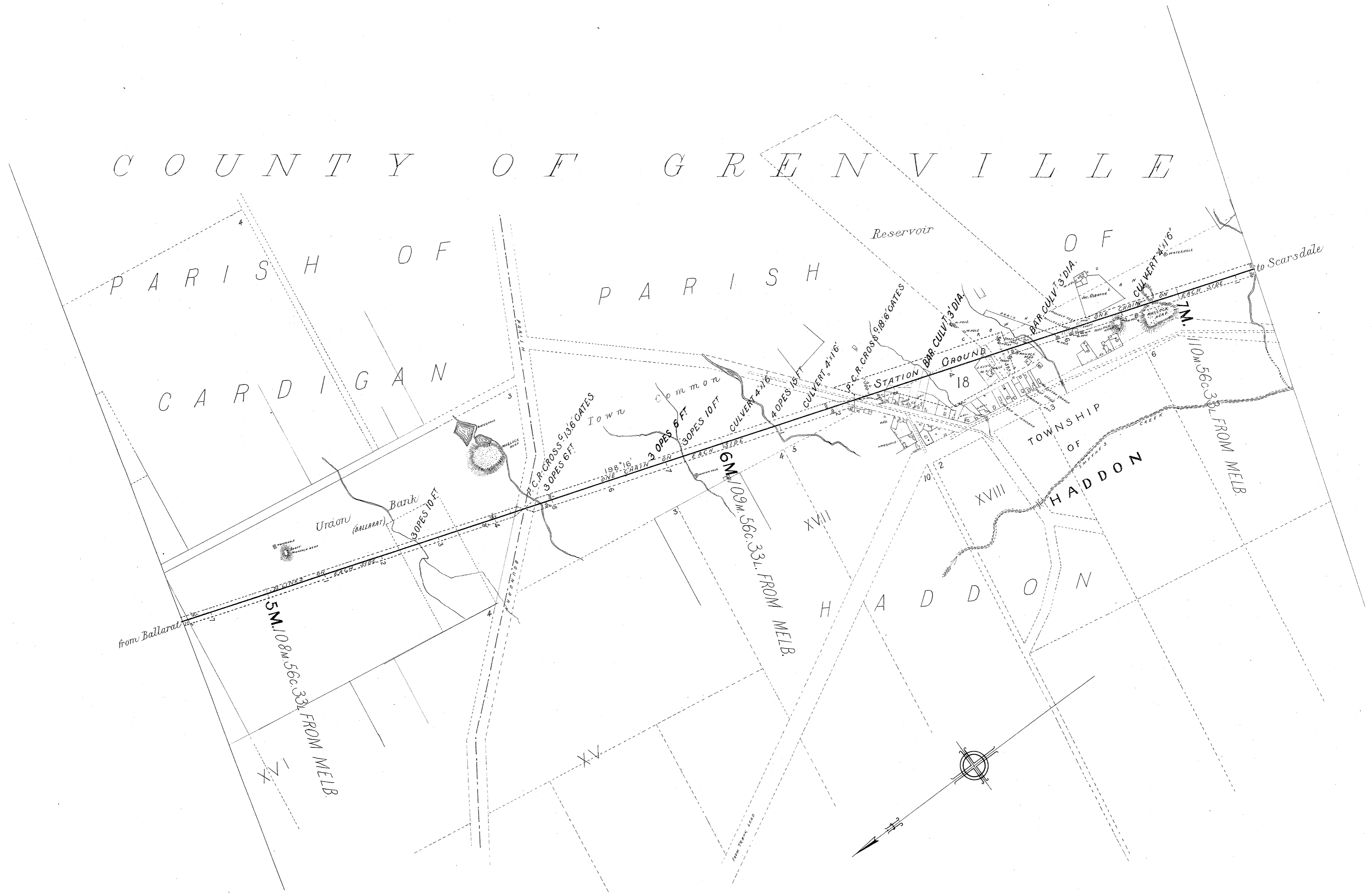
CONTRACT N^o 1633.
N^o 2.



VICTORIAN RAILWAYS, BALLARAT AND SCARSDALE LINE.

Scale 10 Chains to 1 inch.

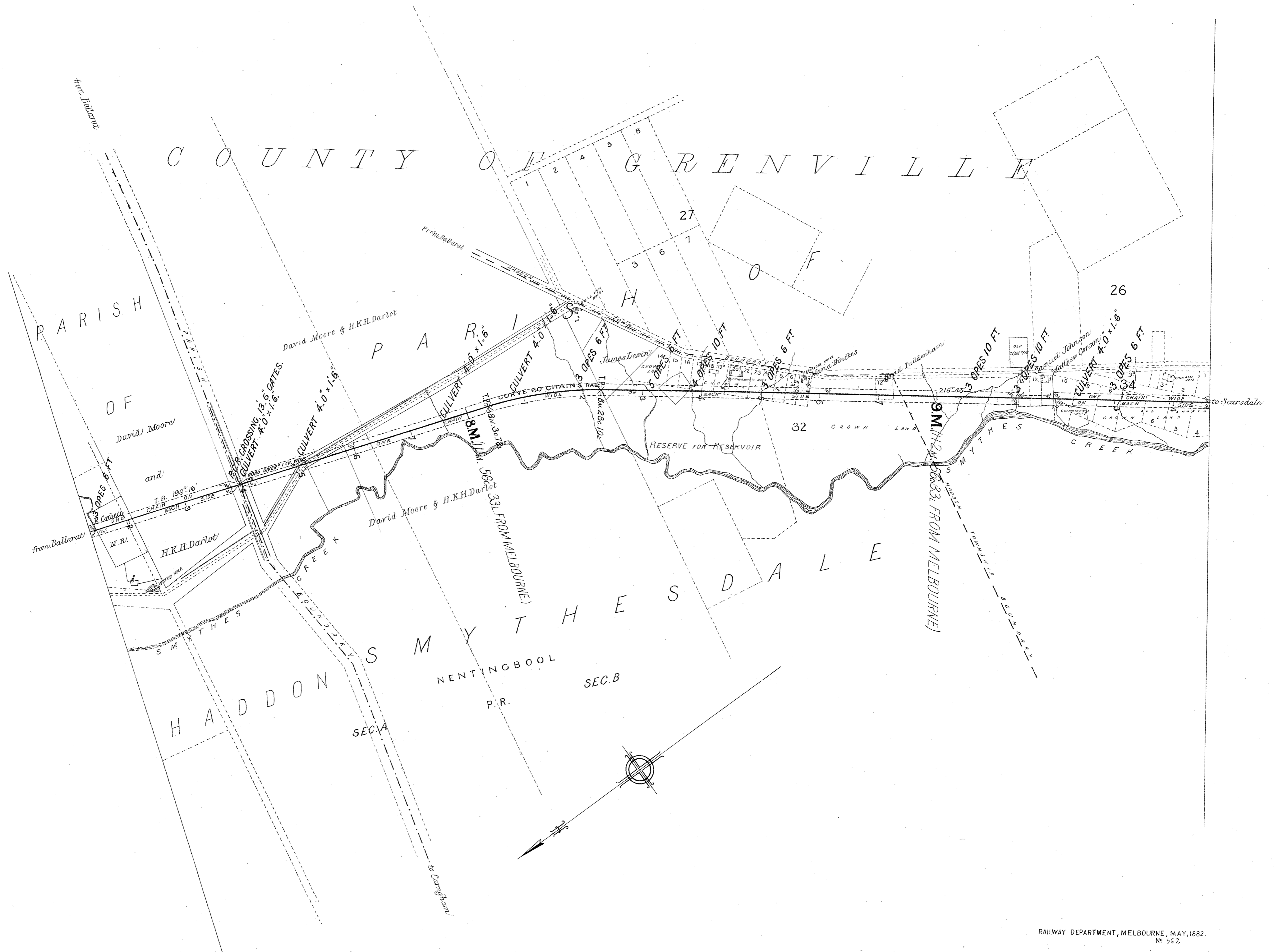
CONTRACT N^o 1633.
N^o 3.



VICTORIAN RAILWAYS,
BALLARAT AND SCARSDALE LINE.

Scale, 10 Chains to 1 inch.

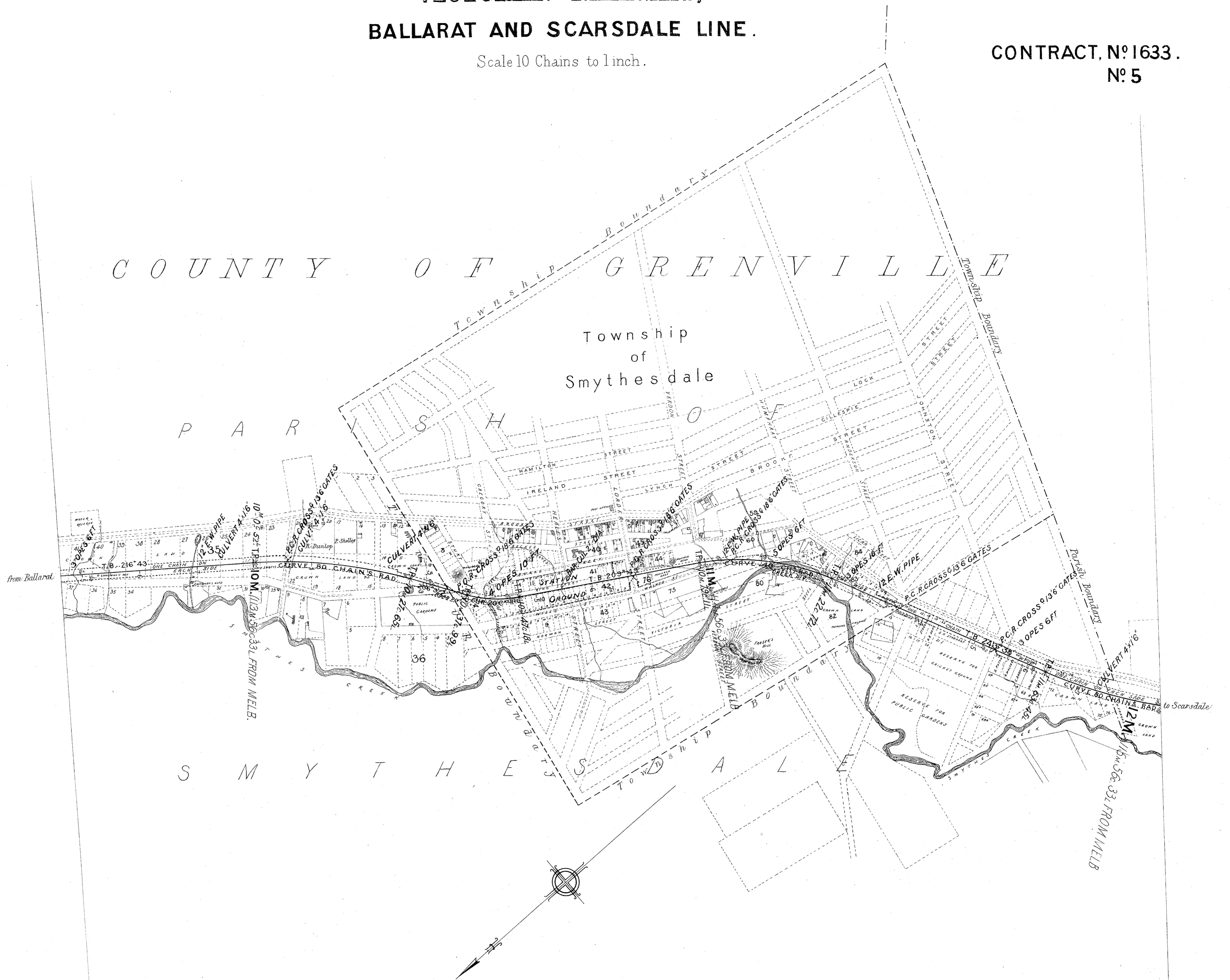
CONTRACT N° 1633.
N° 4.



VICTORIAN RAILWAYS,
BALLARAT AND SCARSDALE LINE.

Scale 10 Chains to 1 inch.

CONTRACT, N^o 1633.
N^o 5



VICTORIAN RAILWAYS, BALLARAT AND SCARSDALE LINE.

CONTRACT, N^o 1633.
N^o 1

HORIZONTAL 4 CHAINS TO AN INCH.
VERTICAL 40 CHAINS TO AN INCH.

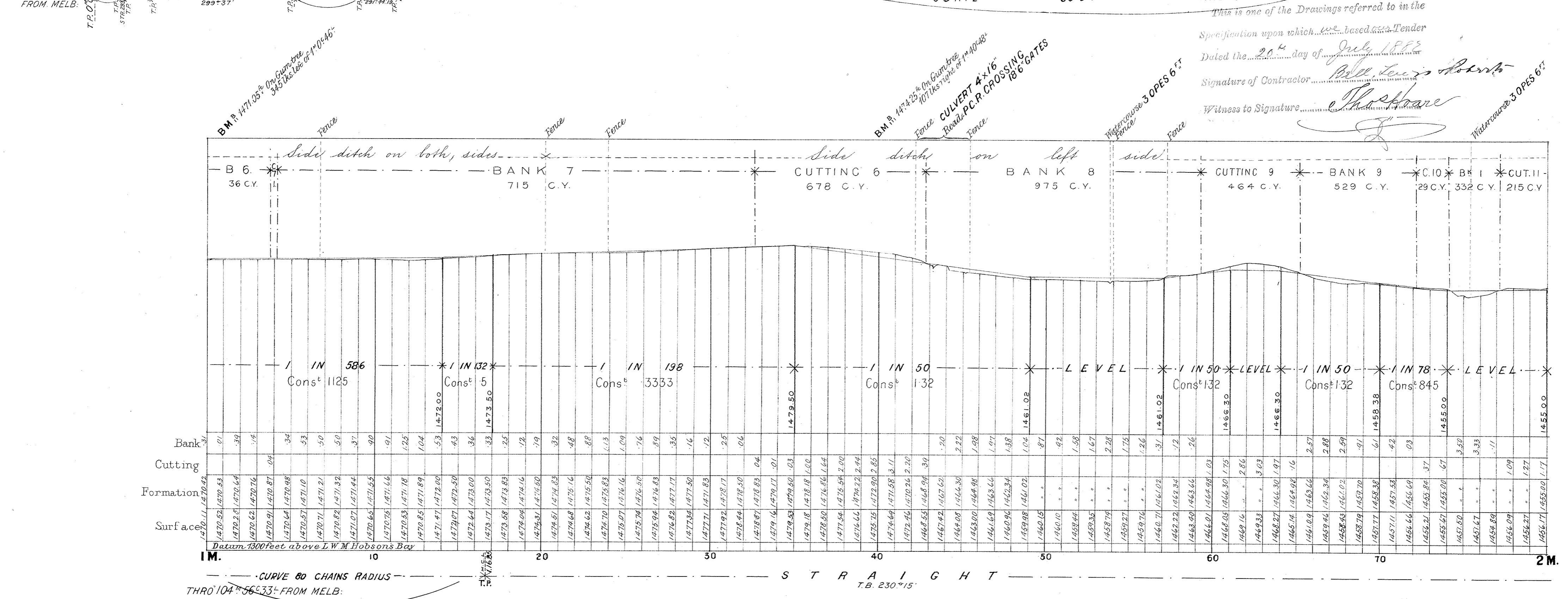
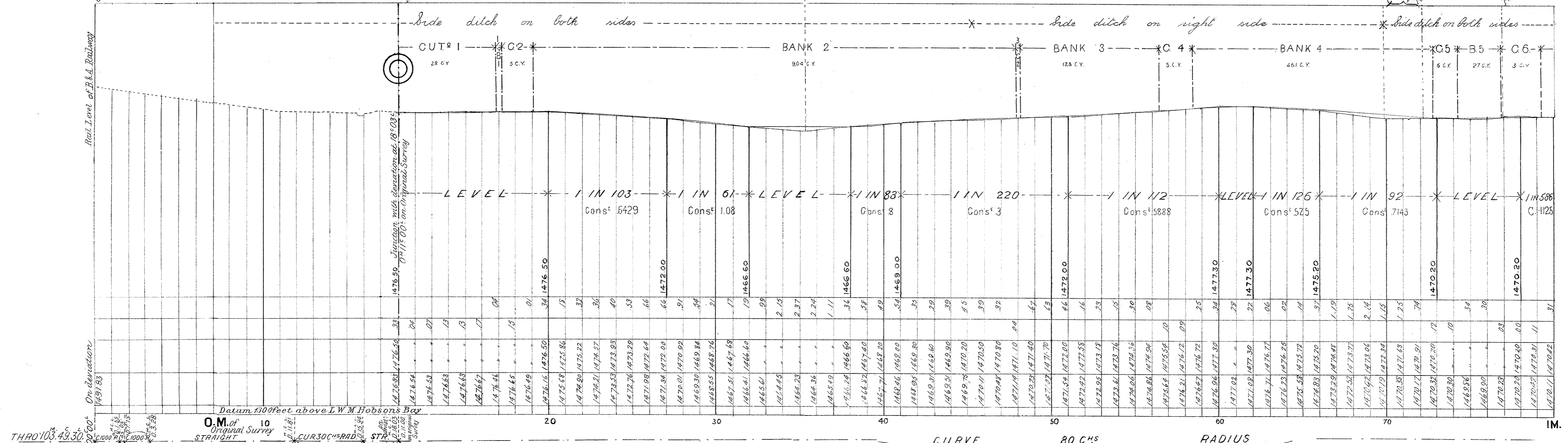
Junction with Ballarat & Ararat Line at 3rd 64th or 103rd 49th 30th From Melbourne

COMMENCEMENT OF CONTRACT 1633 AT 0th 11th 15th Railway Fence, on original survey of 103rd 67th 33rd FROM MELBOURNE

Watercourse
CULVERT 4x16

B.M. 10th 10th 10th on original survey
On 44th 08th 74th 85th 74th

CULVERT 4x16
Road P.C.R. CROSSING 13th 6th GATES
Fence CULVERT 4x16

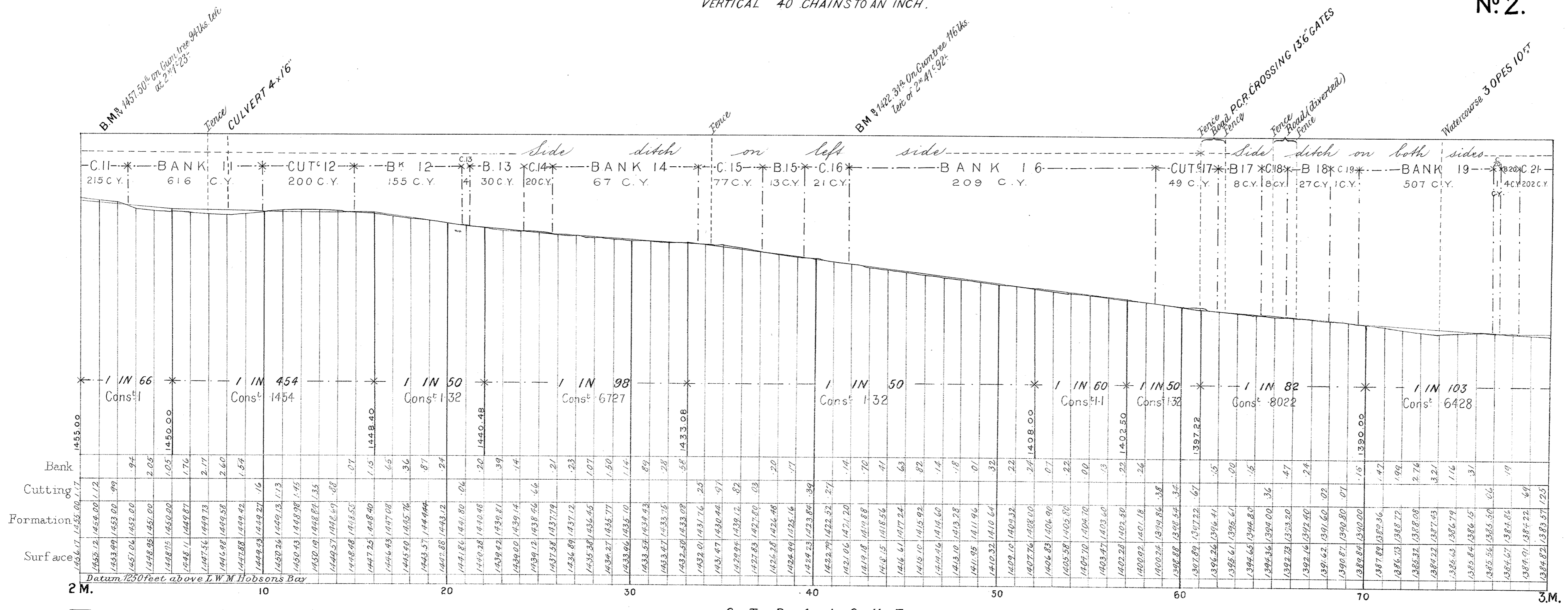


This is one of the Drawings referred to in the Specification upon which... based... Tender Dated the... day of... July 1883
Signature of Contractor...
Witness to Signature...

VICTORIAN RAILWAYS, BALLARAT AND SCARSDALE LINE.

CONTRACT N^o 1633.
N^o 2.

SCALES. HORIZONTAL 4 CHAINS TO AN INCH.
VERTICAL 40 CHAINS TO AN INCH.

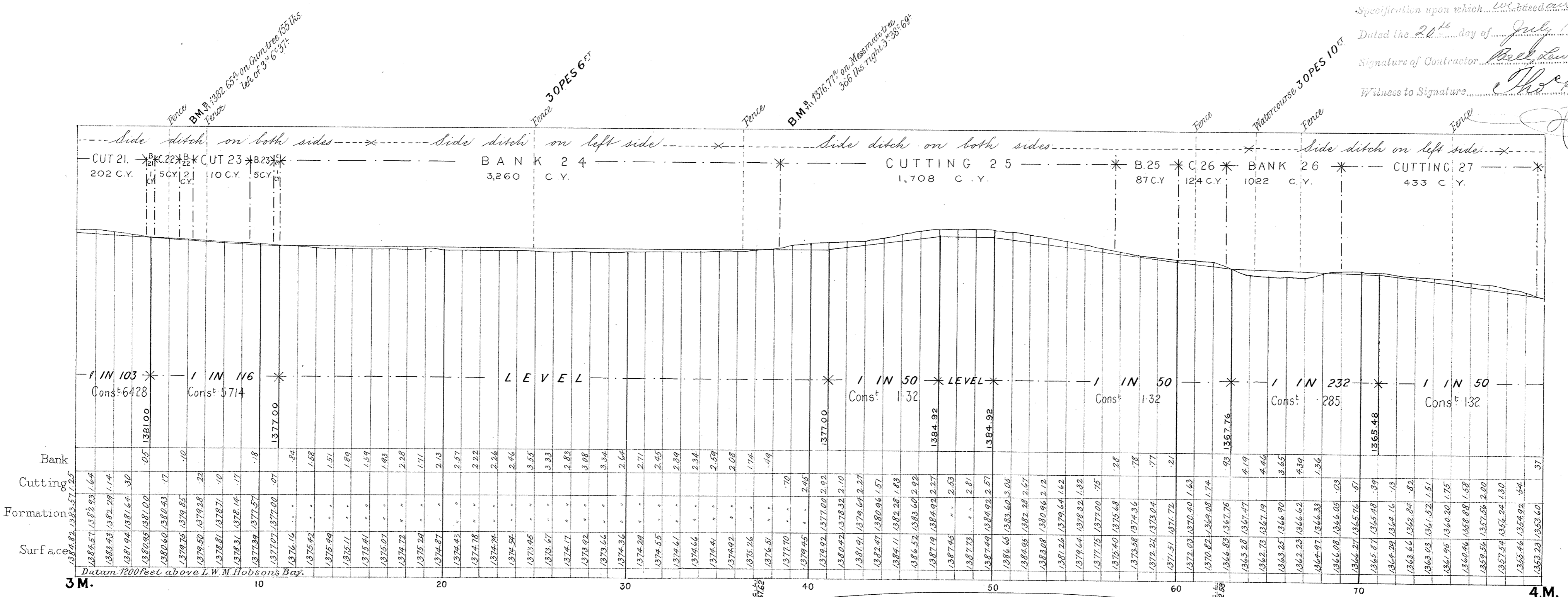


THRO' 105° 56' 33" FROM MELB.

S T R A I G H T
T.B. 230° 15'

This is one of the Drawings referred to in the
Specification upon which... was based... Tender
Dated the 20th day of July 1883

Signature of Contractor...
Witness to Signature...



THRO' 106° 56' 33" FROM MELB.

S T R A I G H T
T.B. 230° 15'

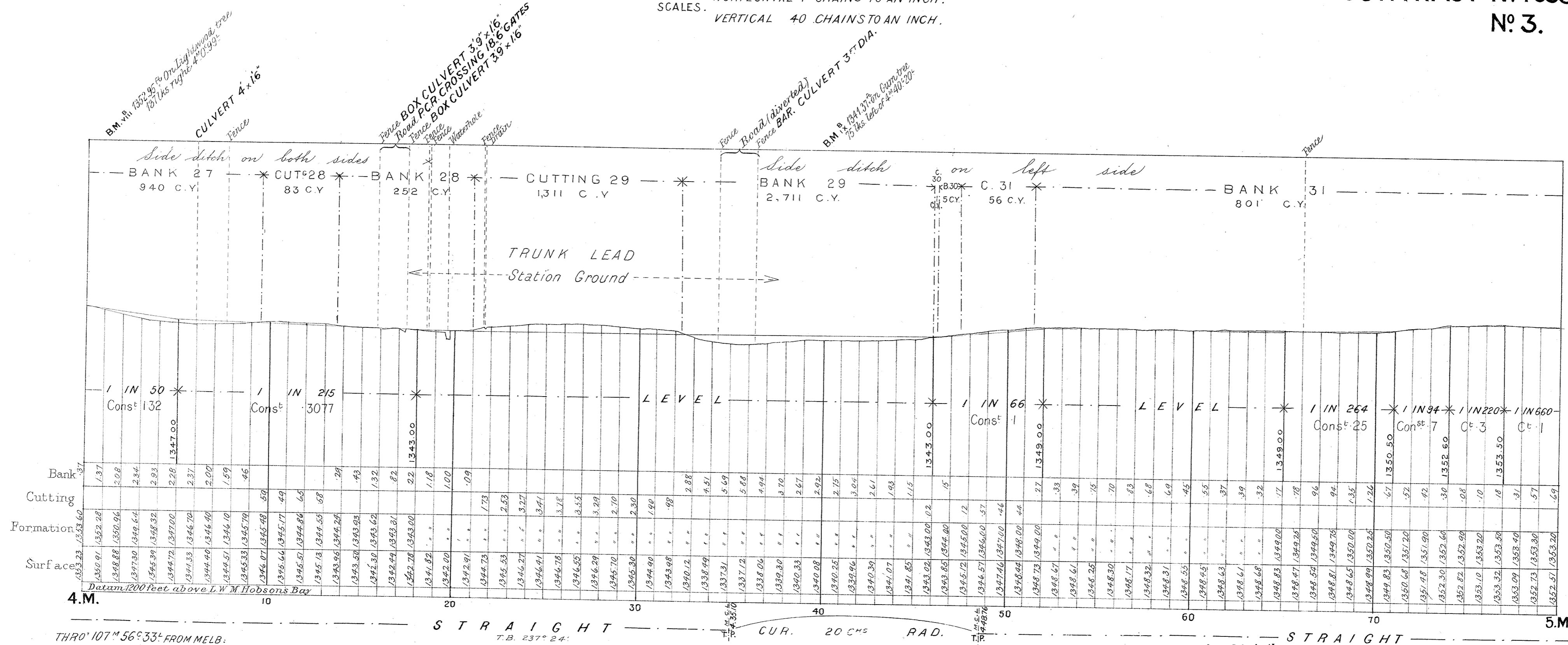
C U R V E
200 CHS RADIUS

S T R A I G H T
T.B. 237° 24'

VICTORIAN RAILWAYS, BALLARAT AND SCARSDALE LINE.

CONTRACT N^o 1633.
N^o 3.

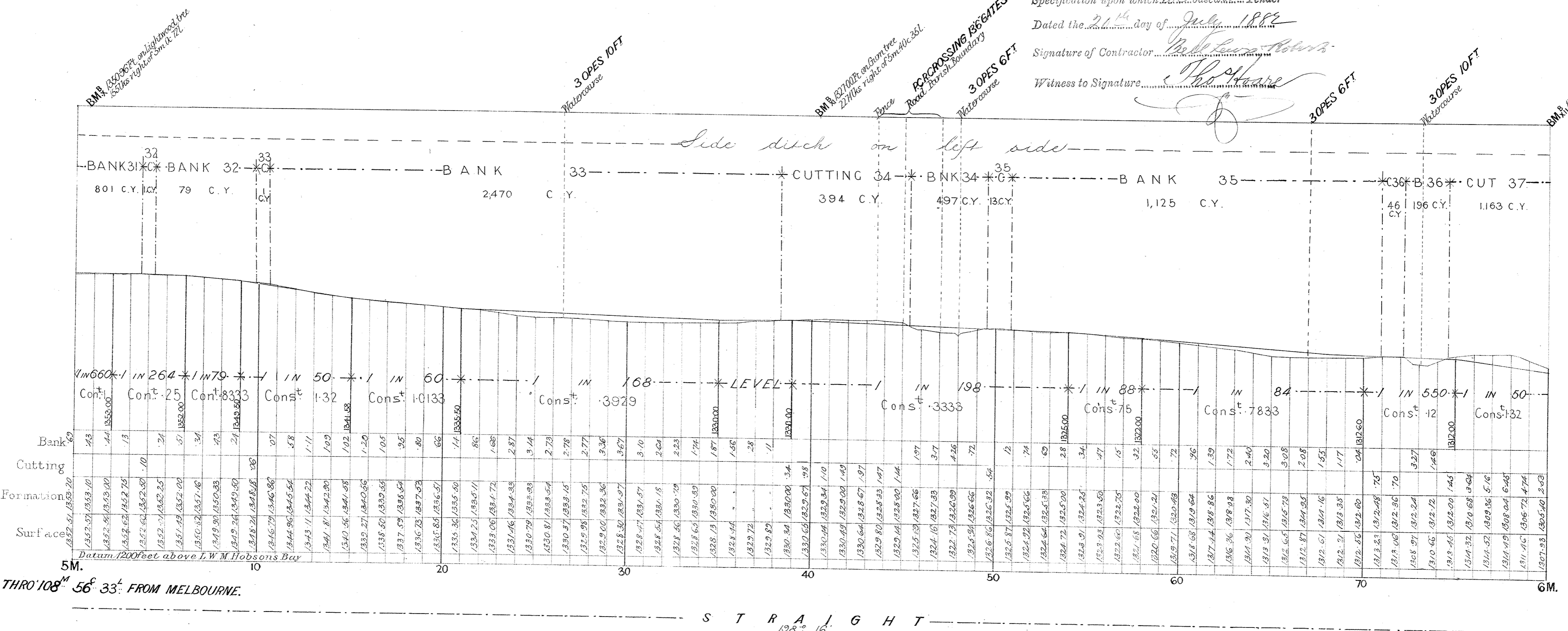
HORIZONTAL 4 CHAINS TO AN INCH.
VERTICAL 40 CHAINS TO AN INCH.



THRO' 107^m 56° 33' FROM MELB.

This is one of the Drawings referred to in the
Specification upon which the Tender
Dated the 21st day of July 1882

Signature of Contractor *W. H. Lewis*
Witness to Signature *W. H. Moore*

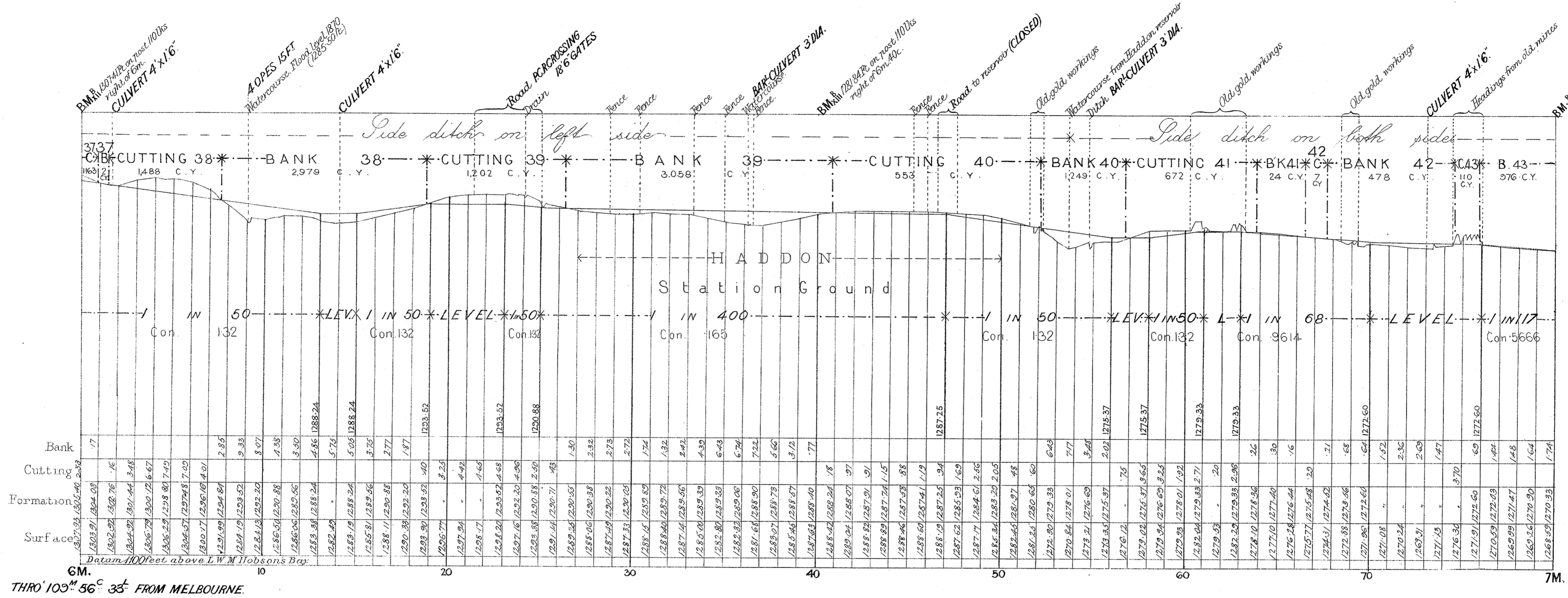


THRO' 108^m 56° 33' FROM MELBOURNE.

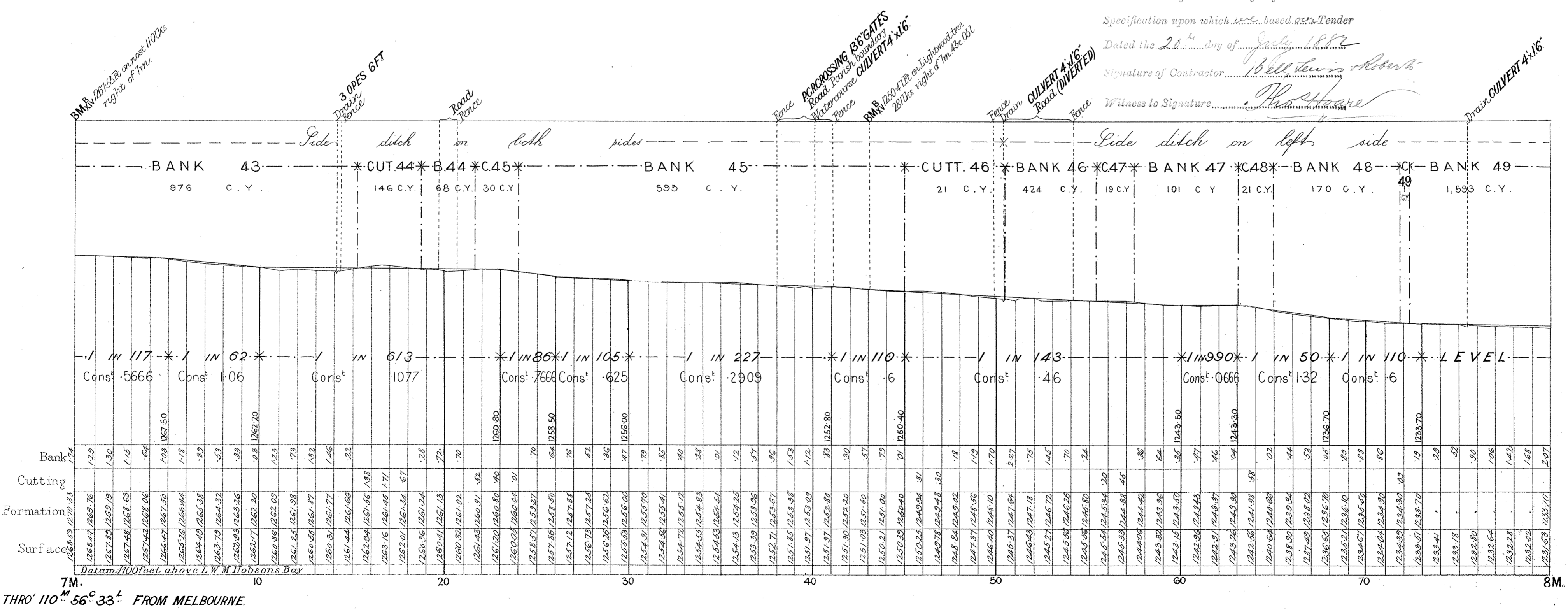
VICTORIAN RAILWAYS, BALLARAT AND SCARSDALE LINE.

CONTRACT N^o 1633.
N^o 4.

HORIZONTAL & CHAINS TO AN INCH.
VERTICAL 40 CHAINS TO AN INCH.



S T R A I G H T
138 + 16.



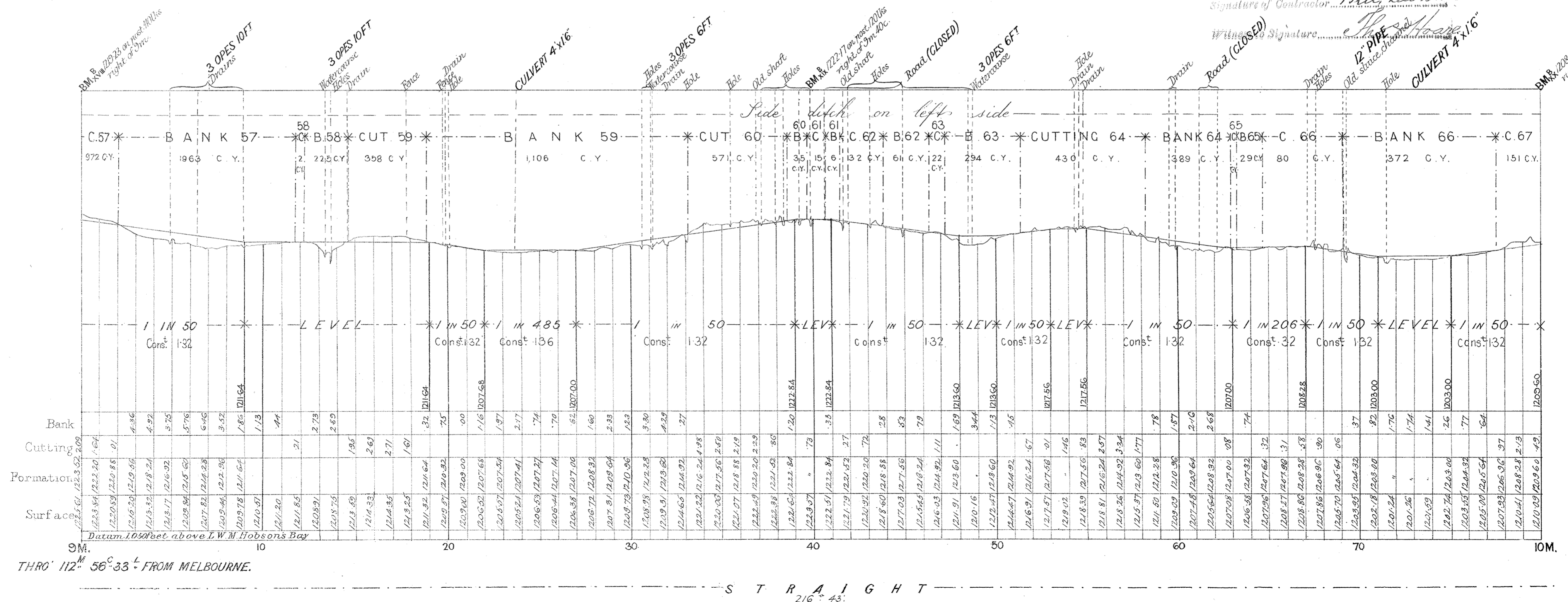
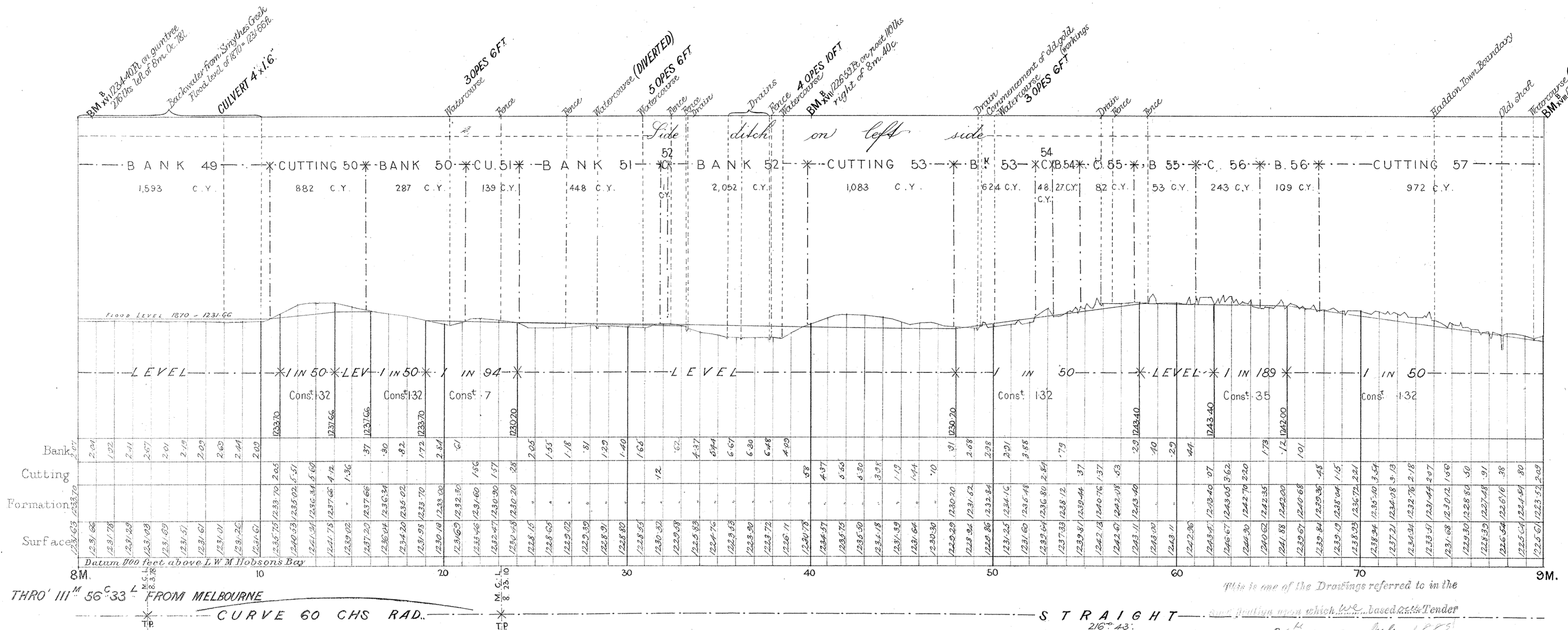
S T R A I G H T
138 + 16.

This is one of the Drawings referred to in the
Specification upon which the based tenders were
Dated the 24th day of July 1882
Signature of Contractor: *W. H. ...*
Witness to Signature: *...*

VICTORIAN RAILWAYS, BALLARAT AND SCARSDALE LINE.

CONTRACT N^o 1633.
N^o 5.

SCALES. HORIZONTAL & CHAINS TO AN INCH.
VERTICAL 40 CHAINS TO AN INCH.

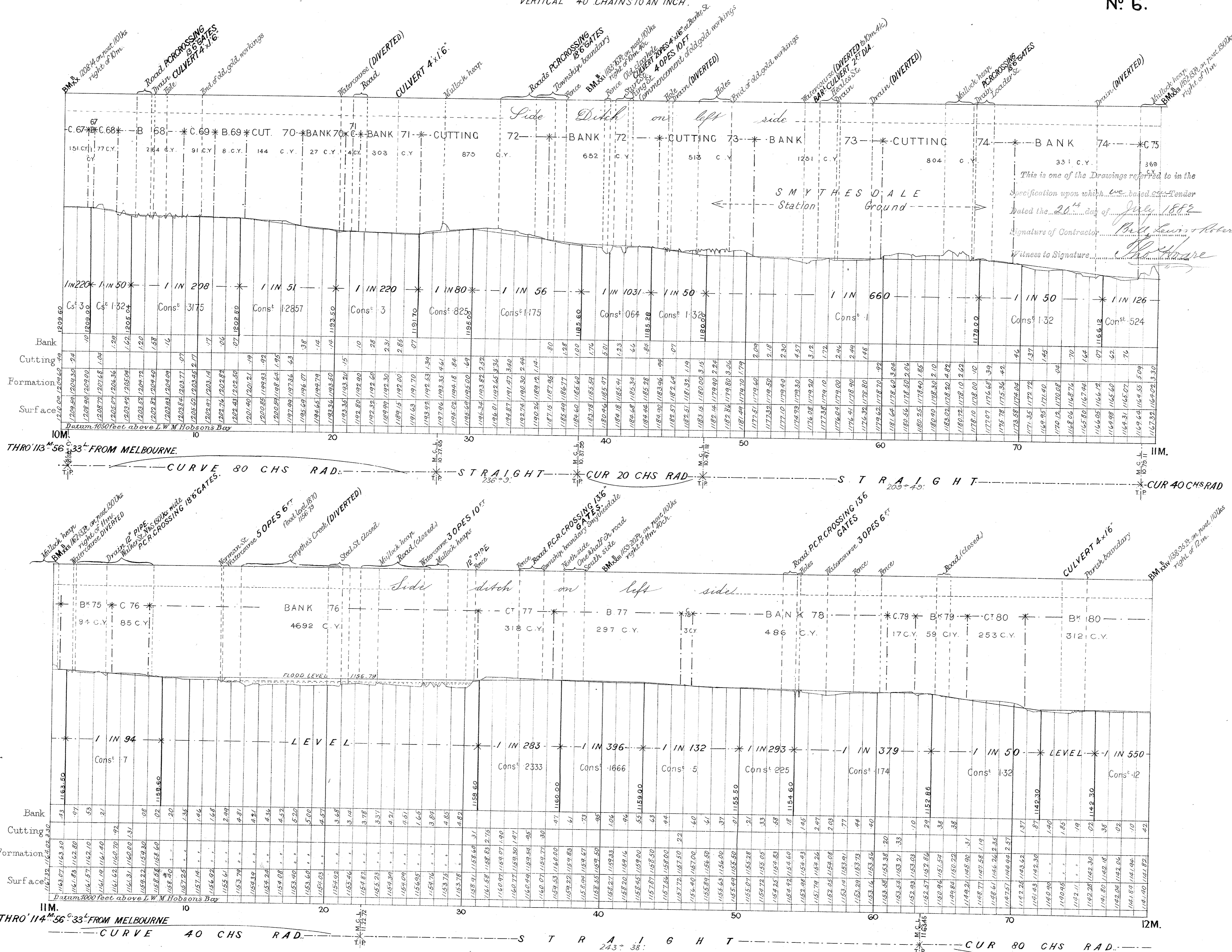


This is one of the Drawings referred to in the
contract and freight upon which we based our Tender
dated the 20th day of July 1882
Signature of Contractor... *Bill Lewis Roberts*
Witness Signature... *John Thomas*

VICTORIAN RAILWAYS, BALLARAT AND SCARSDALE LINE.

SCALES. HORIZONTAL 4 CHAINS TO AN INCH.
VERTICAL 40 CHAINS TO AN INCH.

CONTRACT, N^o 1633.
N^o 6.



VICTORIAN RAILWAYS, BALLARAT AND SCARSDALE LINE.

CONTRACT N^o 1633.
N^o 7.

SCALES. HORIZONTAL 4 CHAINS TO AN INCH.
VERTICAL 40 CHAINS TO AN INCH.

