

# Victorian Railways

CARLSRUHE AND DAYLESFORD LINE.

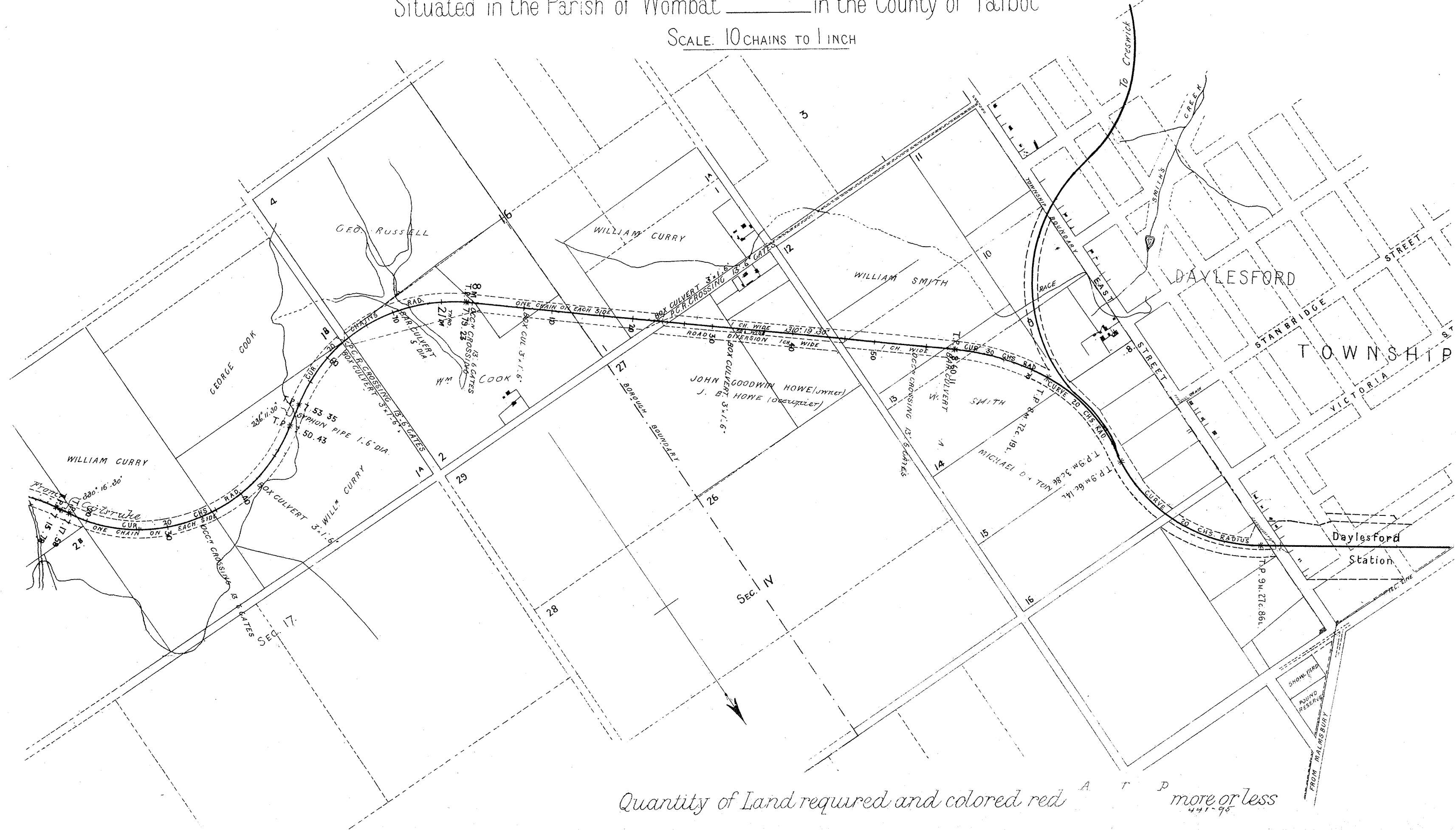
Plan of Land referred to in Notice to Treat N<sup>o</sup>.....

belonging to.....

Situated in the Parish of Wombat \_\_\_\_\_ in the County of Talbot

SCALE. 10 CHAINS TO 1 INCH

(11) x



Quantity of Land required and colored red A T P more or less

441-95